



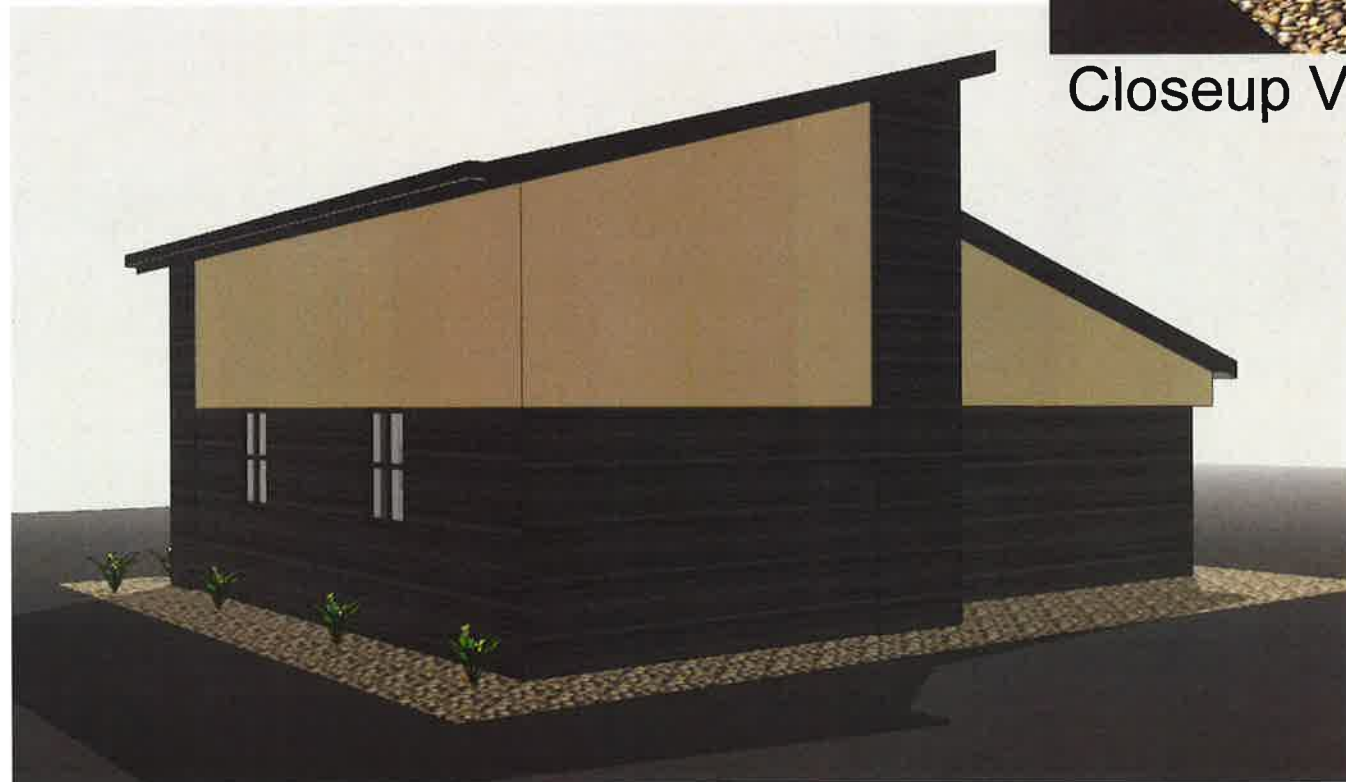
View Looking NW



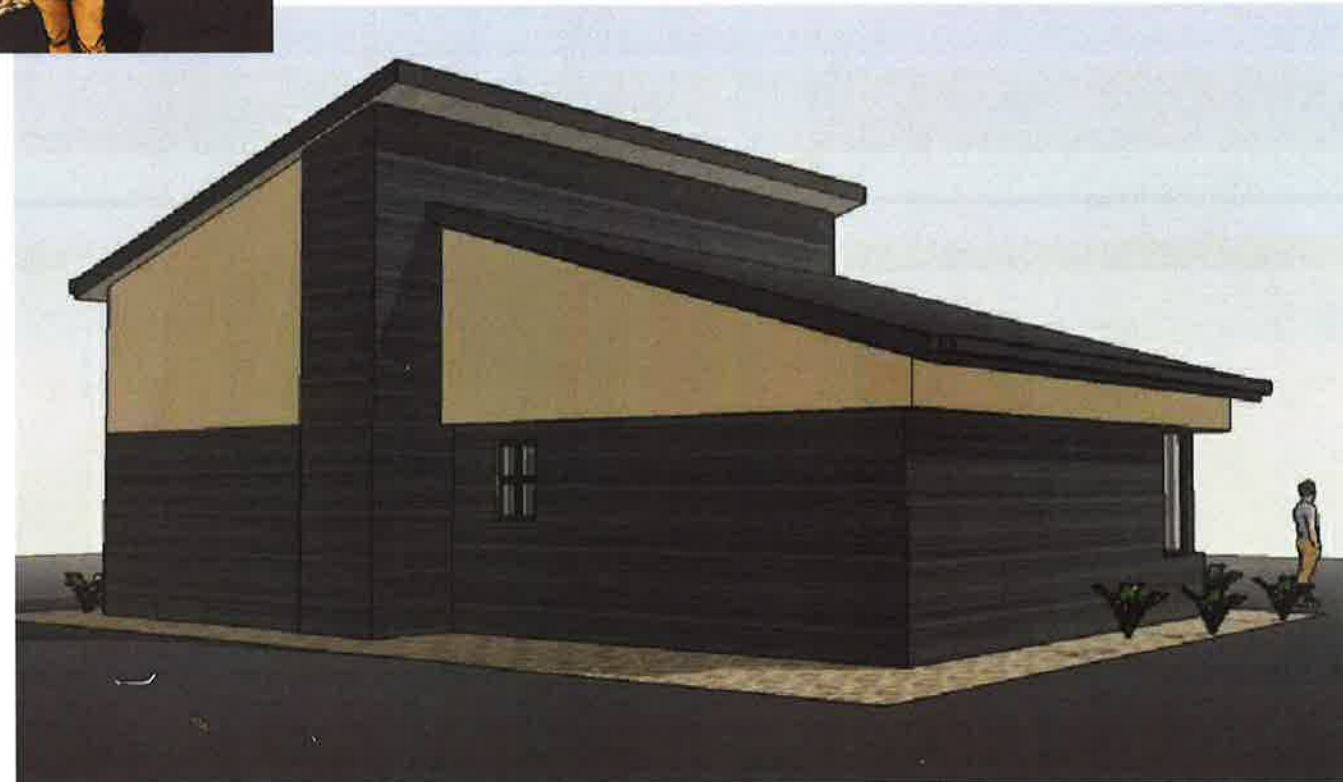
View Looking SW



Closeup View



View Looking SE



View Looking NE

Mark	Date	Description
0	6/25/19	Landscape Revision

WILLIAM FELDMAN, RA  
ARCHITECT  
7820 N. BOYD WAY  
MILWAUKEE, WI 53217  
PH 414.861.1284  
WFELDMAN5@GMAIL.COM

**Auto Sales Office**  
**2300 Douglas Ave**  
Racine, WI

DRAWN BY: WF  
CHECKED BY: WF  
DATE: 4-30-19  
JOB NUMBER: 19002

Proposed Building  
Renderings

**A9.1**