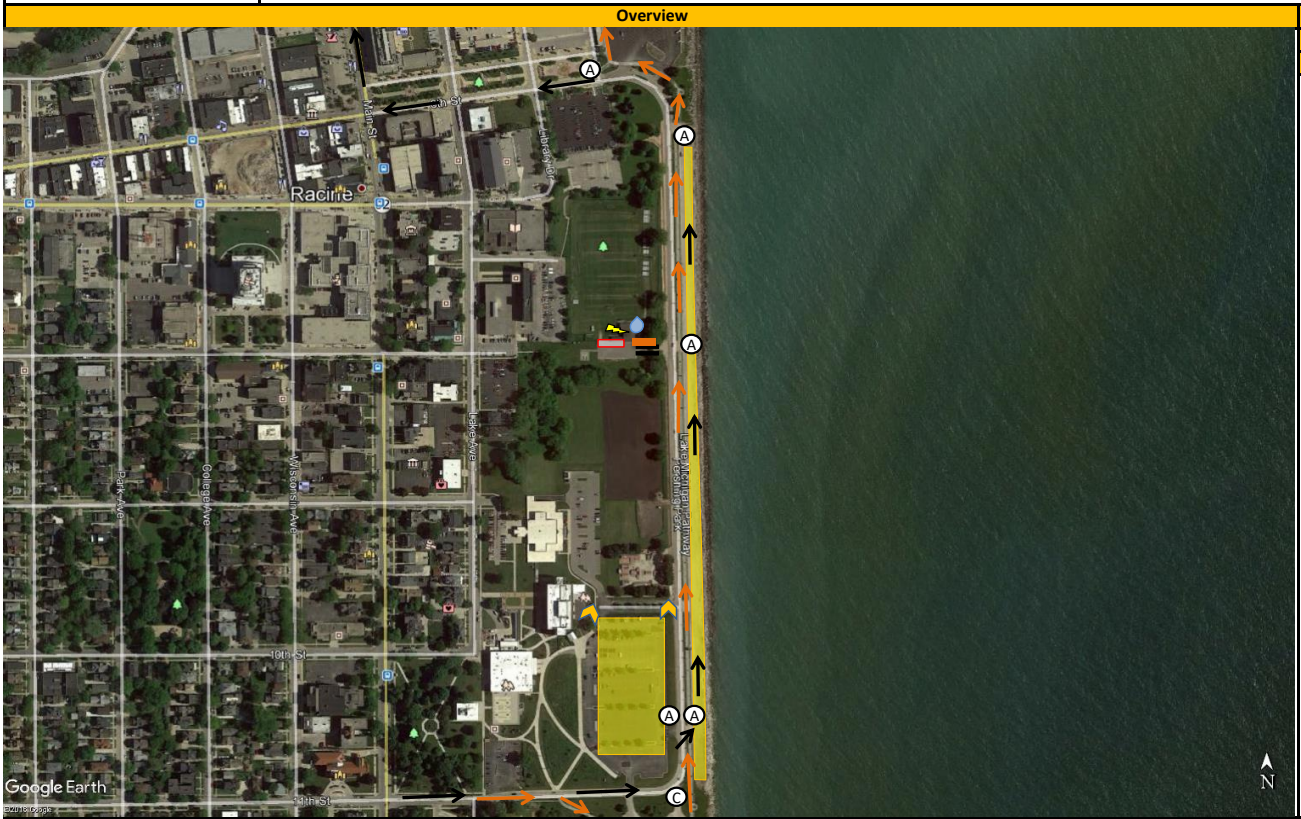


Exchange 6	Park	Location: Pershing Park 783 Pershing Park, Racine, WI 53403 (GPS: 42.724550, -87.778927)	Contact:	Night Time Hours 7:00 PM- 6:00 AM
------------	------	--	-----------------	---

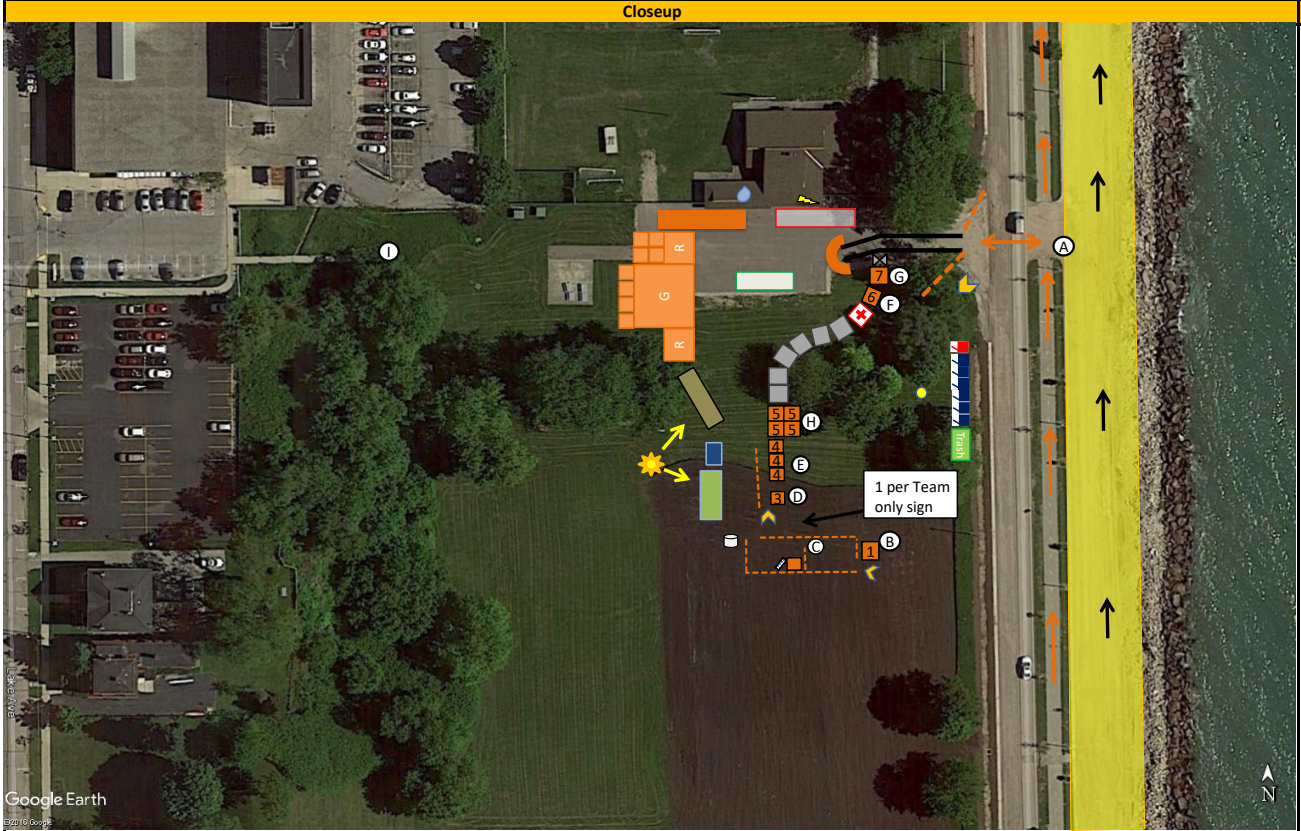
Max Parking Space	400	
Peak Parking Needs		
Peak Time		
Volunteer Shift Time		
Shift	Start	End
Shift 1		

Key:

Parking	Toilets	ADA	Orange Ragnar Tent	A-Frame Directional Signage	Gear tent	Climbing Wall
Cones & Tape	Dumpster	Water Access	Charity Tent	Medic	Arch	Petting Zoo
Van's Path	Power Access	Volunteer	Light Tower	Cornhole / Games	Gear Semi	
Runner's Path	Water Access	Band	Outdoor Sleeping Area	Ragnar Semi		
Chute	Speaker	Safety Briefing Screen				
Trash Box						
Handwashing Station						



Exchange Open: 9:00 AM
Exchange Closes: 8:00 PM
Overview Notes



Operational/Tent Notes:
1 - Gear Check In
2 - HQ
3 - Flag Check out
4 - Race Goodies
5 - T-Shirts
6 - Water Tent
7 - Announcer Tent
Medic Tent
Gear Tent
Reebok Tents
RX Bar
Progenex
KT Tape
Nathan
Body Guardz
Spry

Overview Notes	
CHUTE PLACEMENT	The chute should be placed at the entrance to the parking lot at Pershing Park soccer field
PARKING INSTRUCTIONS	Primary parking is the strip of parking along the lake. We also have permission to use the Gateway Technical College parking lot.
TRAFFIC CONCERNS	
VAN/RUNNER FLOW	Van / Runner paths cross as the incoming runner crosses the exit of the main parking lot and the outgoing runner as they cross the entrance to the same parking lot
DUMPSTER PLACEMENT	Place west of the road on the grass facing away from the lake
PORT-A-POTTIE PLACEMENT	Place west of the road on the grass facing away from the lake
PRIVATE PROPERTY CONCERNS	No use of the soccer field North of the exchange

Other Notes	
Repair and Rehabilitation Massage - Leah Schneider - (480) 406-5396 3:30 PM - 9:30 PM	
Dumpster: xxxx	
Toilets - United Site Services - Rollin Kay (508) 250-4919	

Volunteer Duties		
A	Manage parking flow, when slow, manage toilets & clean up exchange	6
B	Manage gear check in: 6 vests, 2 lights and 2 tail lights.	2
C	Direct runners to the next safety briefing. Do not let runners in 1/2 way through safety talk. Must be present for entire video, read any supplemental info	1
D	Flag check out: runners go through safety briefing, handing you their Flag Sheet + give them 2 flags. When slow, enter phone numbers into google doc	2
E	Hand out race numbers, and goodie bags	4
F	Water Tent: fill out coolers, clean up	1
G	Exchange chute, assisting announcer	1
H	T-Shirt tent	4
I	Redirect runners back to the venue who might try to go to the YMCA	1
		22

Inventory						
300-500 Teams	Tents	Tables & table cloths	Tent Wall	Chairs	Volunteers	Cones
TENT #1 GEAR CHECK IN	2	4	2	3	3	0
TENT #2 SAFETY BRIEFING	1	0	0	2	2	9
TENT #3 FLAG CHECK	1	1	1	3	3	2
TENT #4 BIBS/ PARTNER STU	3	3	3	6	6	3
TENT #5 T-SHIRTS	4	5 tables & min 2 table cloths	4	4	5	0
TENT #6 HQ	1	2	1	2	1	0
TENT #7 WATER	1	1	1	1	1 or 2	0
TENT #9 ANNOUNCER/TIMEF	1	2	1	2	2* IF REQUESTED BY ANNOUNCER	0