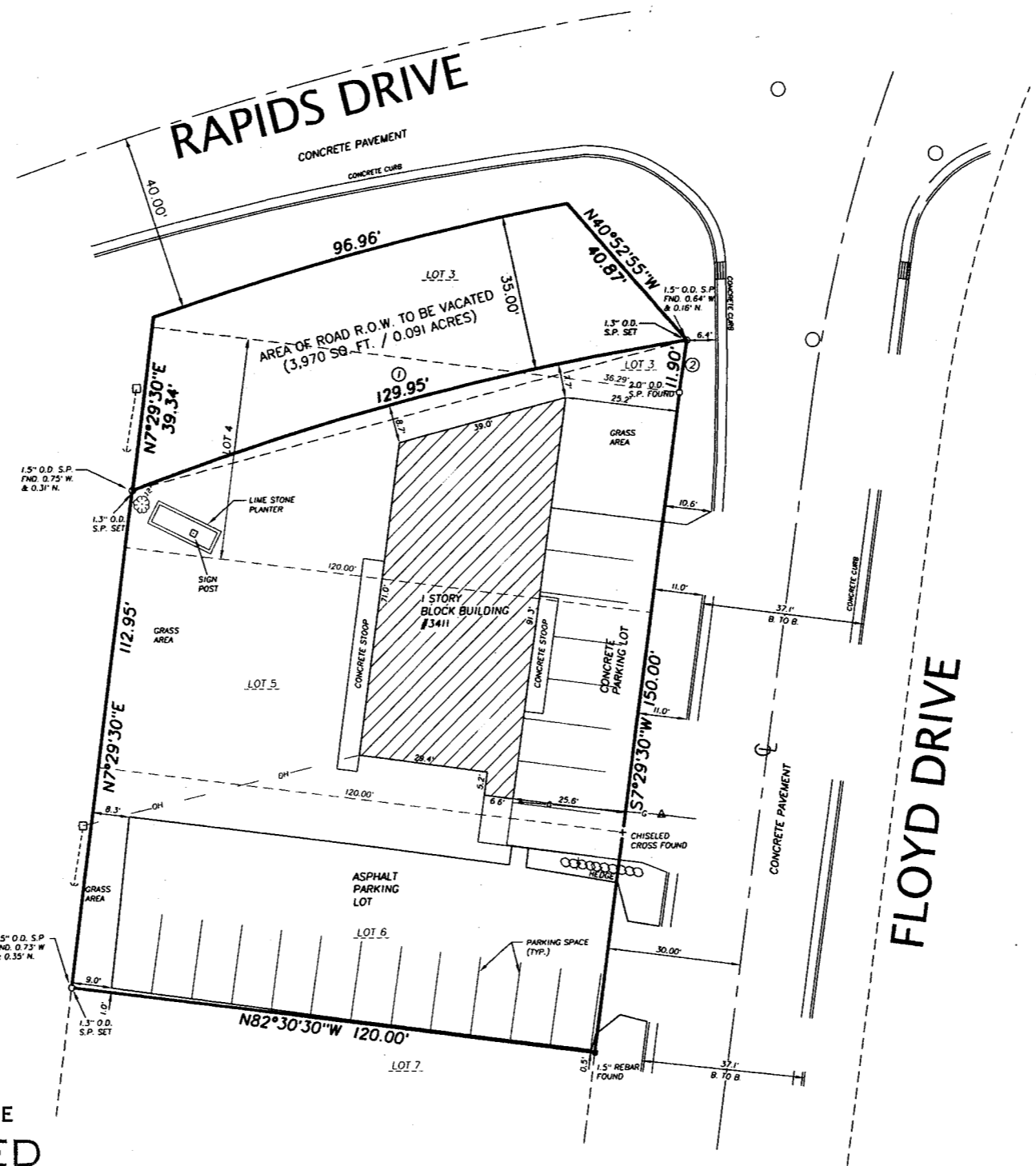


- LEGEND**
- SPOT GRADE +
  - CHISELED CROSS +
  - PROPERTY CORNER  $\odot$   $\frac{3}{4}$ " O.D. S.P. FOUND
  - GAS VALVE  $\blacktriangle$
  - POWER POLE  $\square$
  - SIGN  $\uparrow$
  - CATCH BASIN/INLET  $\text{---} \text{---} \text{---}$
  - EXISTING MANHOLE  $\bigcirc$
  - GUY ANCHOR  $\rightarrow$
  - SPRUCE TREE  $\text{---} \text{---} \text{---}$
  - PROPERTY LINE  $\text{---} \text{---} \text{---}$
  - RIGHT-OF-WAY  $\text{---} \text{---} \text{---}$
  - EASEMENT LIMITS  $\text{---} \text{---} \text{---}$
  - C/L ROAD  $\text{---} \text{---} \text{---}$
  - MINOR CONTOUR  $\text{---} \text{---} \text{---}$
  - MAJOR CONTOUR  $\text{---} \text{---} \text{---}$
- UTILITIES**
- BURIED GAS  $\text{---} \text{---} \text{---}$  GAS
  - BURIED ELEC.  $\text{---} \text{---} \text{---}$  ELEC
  - BURIED TELEPHONE  $\text{---} \text{---} \text{---}$  TEL
  - OVERHEAD ELEC.  $\text{---} \text{---} \text{---}$  OE
  - OVERHEAD TELEPHONE  $\text{---} \text{---} \text{---}$  OT
  - SANITARY SEWER  $\text{---} \text{---} \text{---}$  SAN
  - STORM SEWER  $\text{---} \text{---} \text{---}$  SS
  - WATER  $\text{---} \text{---} \text{---}$  WM



**LEGAL DESCRIPTION:**

Parts of Lots 3 and 4 and all of Lots 5 and 6 of Block 5 in "FOX ESTATE SUBDIVISION NO. 2" being a subdivision of a part of the Northeast 1/4 and the Southeast 1/4 of Section 6, Township 3 North, Range 23 East, in the City of Racine, County of Racine, State of Wisconsin.



CITY OF RACINE  
RECEIVED

SEP 13 2007

RICHARD L. HELLER  
CHIEF BUILDING INSPECTOR  
By \_\_\_\_\_

**CURVE DATA**

- ①  
RAD. = 614.20'  
DELTA = 118° 36' 57"  
L.C. = 129.77'  
L.C.B. = N 75° 19' 55" E
- ②  
RAD. = 380.00'  
DELTA = 1° 47' 40"  
L.C. = 11.90'  
L.C.B. = S 8° 23' 19" W

MARK	DATE	REVISION	BY	APVD

**NSE** NORTH SHORE ENGINEERING, INC.  
Consulting Engineers & Land Surveyors  
11433 N. Port Washington Rd., Mequon, Wisconsin, 53092  
(262) 241-9400 • FAX: (262) 241-5337

"ROAD VACATION EXHIBIT"	
FOR LANDMARK CREDIT UNION	
3411 Floyd Drive Racine, WI.	
DATE: September 13, 2007	DRAWN BY: J.G.S.
FIELD CREW: N.A.	Plat No. LS-2677-EXHIBIT

C:\US0\Private\Race\LS-2677-EXHIBIT.dwg, 9/13/2007 6:31:12 AM