

# MOUND CEMETERY - SECTION 5A

## PART OF THE SW 1/4 OF THE NW 1/4 SECTION 17, TOWNSHIP 3 NORTH, RANGE 23 EAST CITY OF RACINE, RACINE COUNTY, WISCONSIN

**SURVEYOR'S CERTIFICATE**

I, MARK R. MADSEN, Professional Land Surveyor, do hereby certify:

THAT I have surveyed, divided and mapped Mound Cemetery Section - 5A in the City of Racine, Racine County, Wisconsin.  
That I have made such survey, Land Division and plat by the direction of the City of Racine, Owner of said land.

THAT such plat is a correct representation of all of the exterior boundaries of the land surveyed and subdivided thereof.

Date: \_\_\_\_\_, 2016

Signed: \_\_\_\_\_  
Mark R. Madsen  
Professional Land Surveyor, 2271

**OWNER'S CERTIFICATE OF DEDICATION**

City of Racine, a corporation duly organized and existing under and by virtue of the laws of the State of Wisconsin, as owner does hereby certify that said corporation caused the land described on this plat to be surveyed, divided, mapped, and dedicated as represented hereon.

In Witness Whereof, the said City of Racine, Director of Parks, has caused these presents to be signed by Tom Molbeck, its Director, at Racine, Wisconsin, and its corporate seal to be hereunto affixed on this \_\_\_\_\_ day of \_\_\_\_\_, 2016.

CITY OF RACINE, DIRECTOR OF PARKS

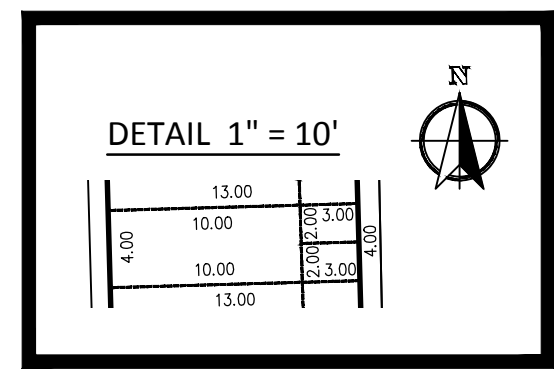
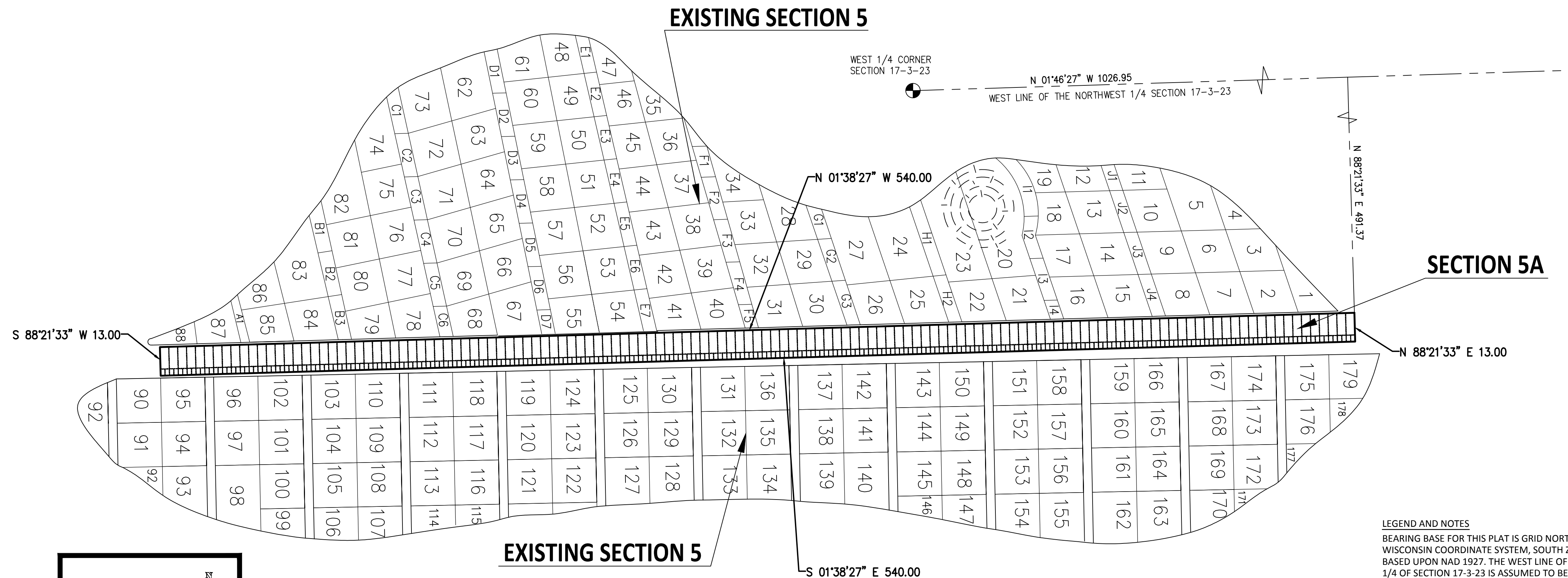
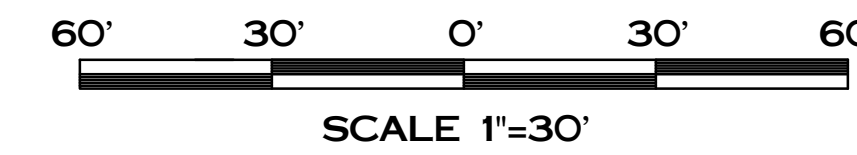
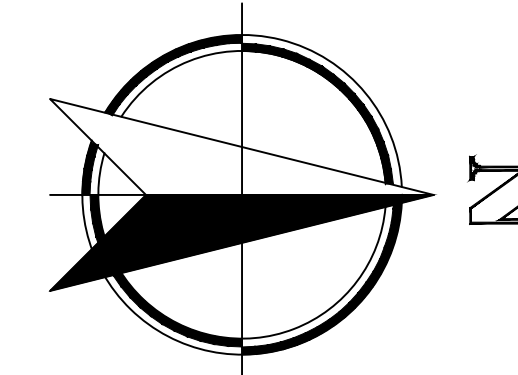
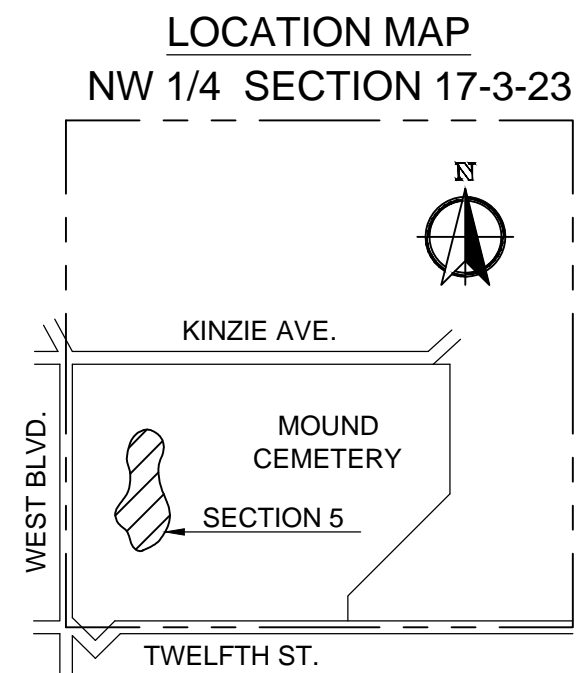
Witness: \_\_\_\_\_

Signed: \_\_\_\_\_  
Tom Molbeck

**CITY'S RESOLUTION**

RESOLVED that the Plat of Mound Cemetery - Section 5, located in the City of Racine, is hereby approved by the Common Council of the City of Racine on this \_\_\_\_\_ day of \_\_\_\_\_, 2016.

John T. Dickert, Mayor                      Janice M. Johnson-Martin, City Clerk



**LEGEND AND NOTES**  
BEARING BASE FOR THIS PLAT IS GRID NORTH, WISCONSIN COORDINATE SYSTEM, SOUTH ZONE, BASED UPON NAD 1927. THE WEST LINE OF THE NW 1/4 OF SECTION 17-3-23 IS ASSUMED TO BEAR N 01°46'27" W.  
ALL DISTANCES MEASURED TO THE NEAREST HUNDREDTH OF A FOOT.  
ALL ANGLES TURNED TO THE NEAREST SECOND AND COMPUTED TO THE NEAREST HALF SECOND.

**SHEET 1 OF 1 SHEETS**