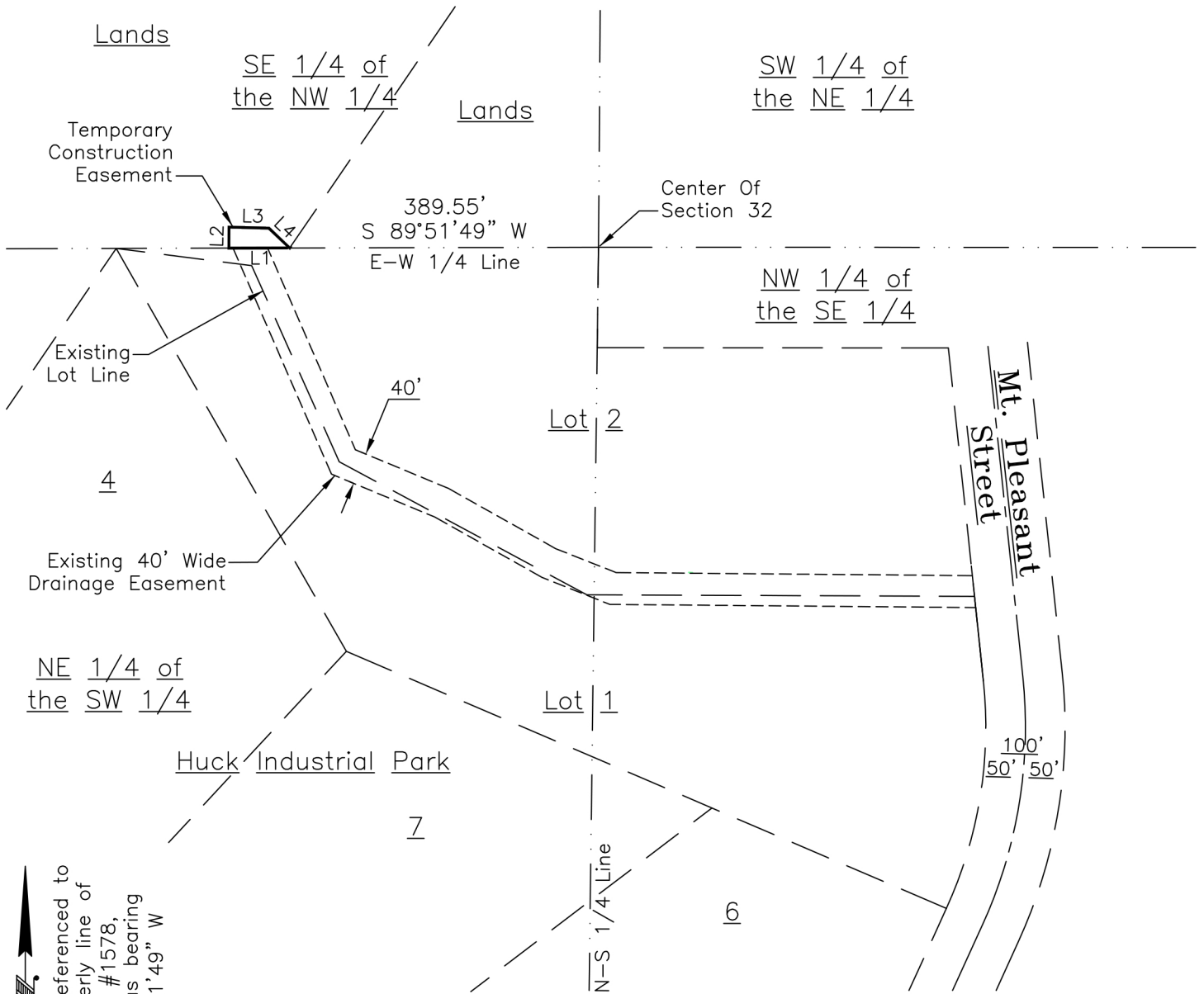


EASEMENT DESCRIPTION MAP

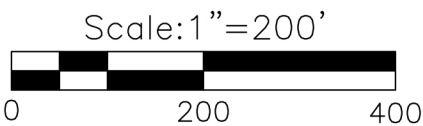
A part of the Southeast 1/4 of the Northwest 1/4 of Section 32,
T4N, R23E, City of Racine, Racine County, Wisconsin.



North, as referenced to
the Northerly line of
C.S.M. #1578,
platted as bearing
S 89°51'49" W



Timothy G. Radl S-2959 Wisconsin Professional Land Surveyor



Line Table

LINE	BEARING	DISTANCE
L1	S 89°51'49" W	76.72'
L2	N 00°20'37" E	26.52'
L3	S 88°29'11" E	50.32'
L4	S 46°24'00" E	36.26'

BLOOM COMPANIES, LLC

10501 W. Research Drive, Suite 100, Milwaukee, WI 53226

DRAWN R. Sowka	DATE 4/25/2024	Prepared for: AECOM 1555 N River Center Milwaukee, WI 53212
APPROVED TGR	DATE 4/26/2024	
SCALE 1" = 200'	SHEET 1 of 2	PROJECT NO. BM1-4204-4