



1418 Washington Avenue

Masonry on the front of the building will be repaired/tuckpointed.

Rough carpentry, structural blocking.

Storefront bulkhead and floor framing.

9 new vinyl windows for the two store fronts installed.

2 new store front exterior doors and hardware.

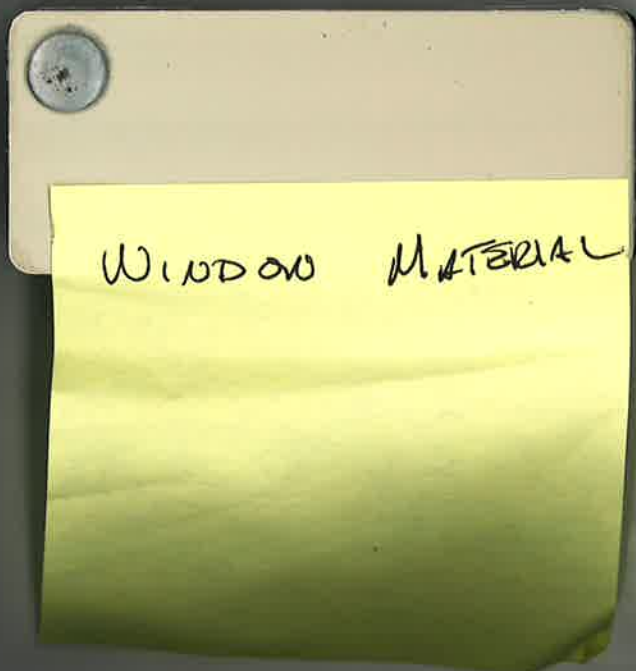
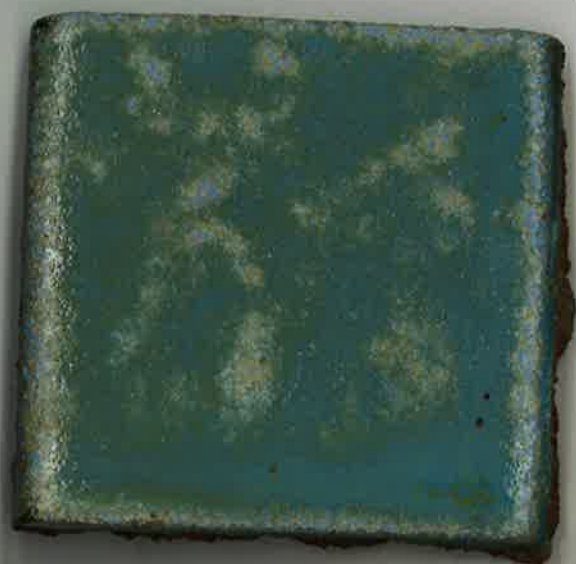
Aluminum framing replaced and re glazing.

Ceramic tile installed at vestibules.

Refurbish outdoor window frames 2nd floor.

**Racine Revitalization
Partnership**

6



WINDOW MATERIAL