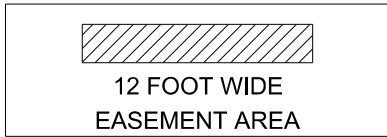
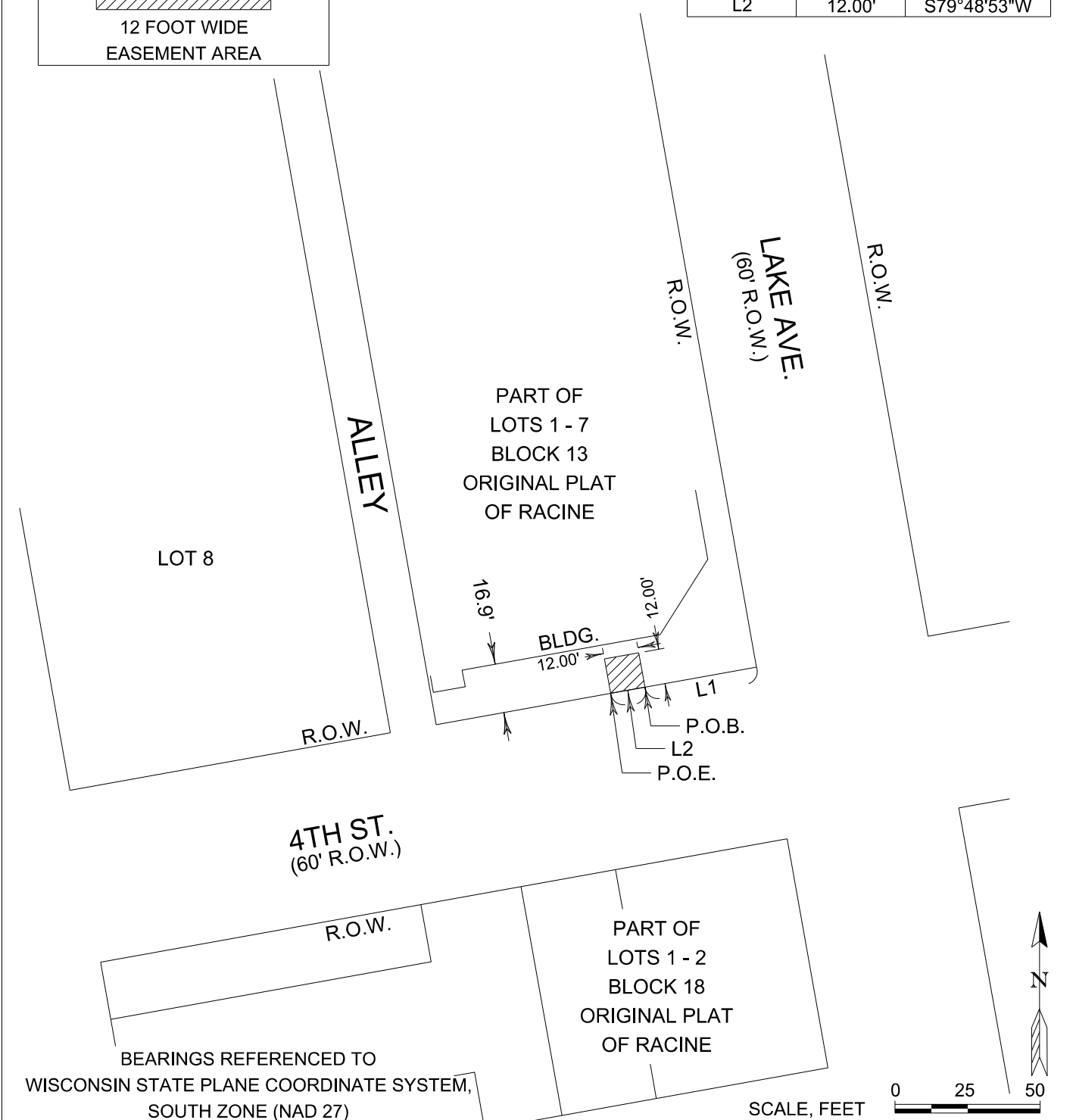


KEY



LINE	LENGTH	BEARING
L1	39.00'	S79°48'53"W
L2	12.00'	S79°48'53"W



KA KAPUR & ASSOCIATES, INC.
CONSULTING ENGINEERS
MILWAUKEE, WISCONSIN
414.351.6668

EXHIBIT "A"



PART OF LOTS 1 - 7, BLOCK 13, ORIGINAL PLAT OF RACINE
LOCATED IN THE SE ¼ OF
SEC. 9, T3N, R23E, CITY OF RACINE,
RACINE COUNTY, WISCONSIN

WR NUMBER: 4527491

DATE: 01/04/2021

DRAWN BY: FCO

SCALE: 1" = 50'

PAGE 1 of 1