

**From:** Sadowski, Matthew  
**Sent:** Thursday, December 04, 2014 5:56 PM  
**To:** Yehlen, Mark; Eeg, Thomas; Payne, Nancy  
**Cc:** 'craig.schaub'; Plaski, Kenneth; Salvo, Stacey  
**Subject:** Item for Public Works Agenda  
**Attachments:** Tinas\_6thStreetFacadeSign\_FormalProof\_Pg1of2\_RevisedScale.pdf;  
Tinas\_ZoningSignSchematicsV6\_RevisedScale.pdf

Hi All:

I have an item that I let fell through the cracks that needs Public Works & Service Commission Review. It was before the Downtown Area Design Review Commission on November 6<sup>th</sup> (item 14-10726) and was approved subject to a hold harmless agreement.

Attached you will find graphics depicting the proposed sign and installation (height above sidewalk and extension out into ROW). The applicant information is as follows:

Representative:

Craig Schaub  
Dig-it- All Signs  
1405 – 16<sup>th</sup> Street Suite 4272  
Racine, WI 53403  
262-770-4861  
craig.schaub [craig.schaub@digitallsigns.com](mailto:craig.schaub@digitallsigns.com)

Client:

Tina Sagal  
Tinas Dress Boutique  
505 Sixth Street  
Racine, WI 53403

Building Owner:

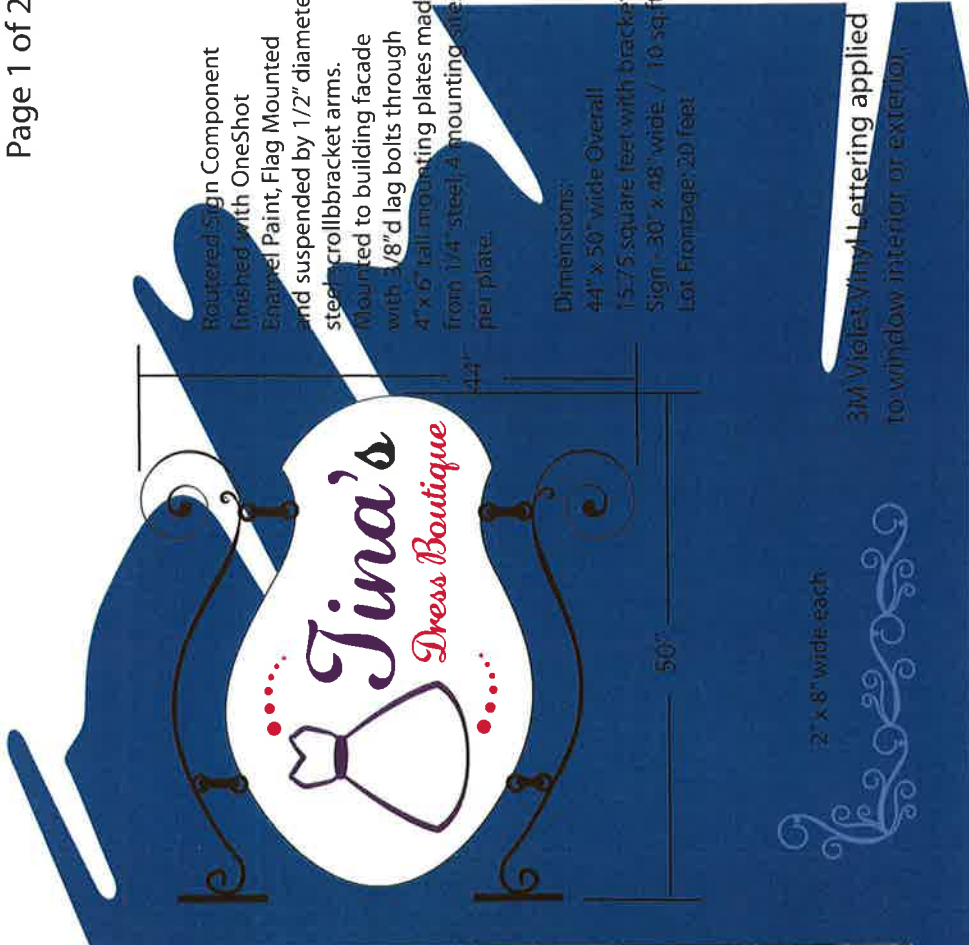
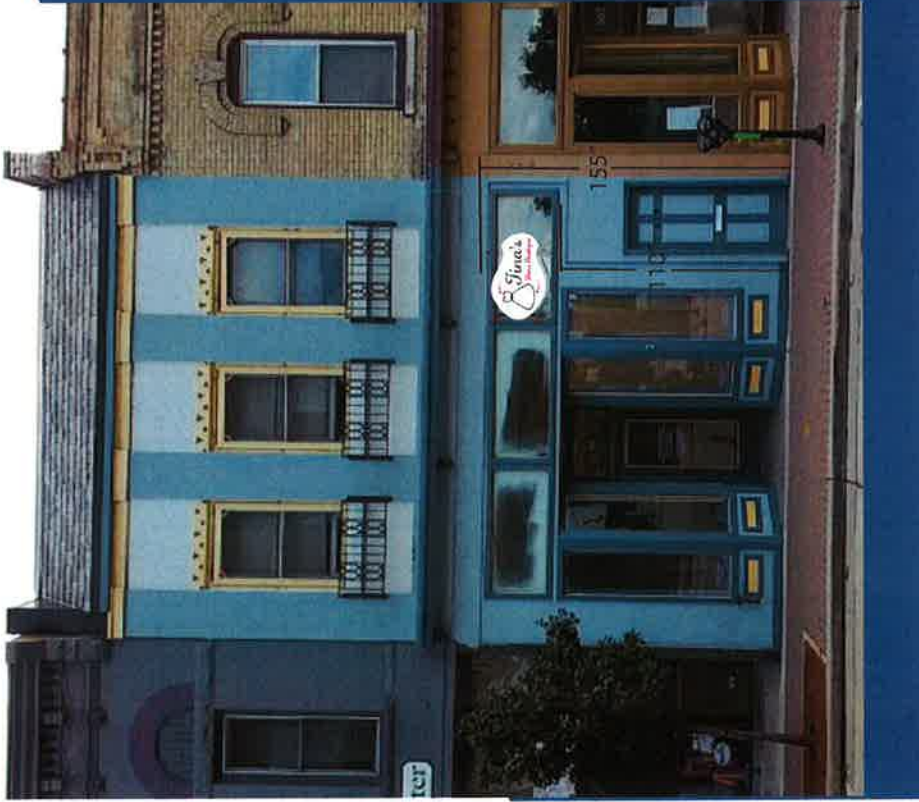
Mark L. & Dolores P. Levine  
L Street Properties  
5115 Darby Pl.  
Racine, WI 53402

If you need more information, please let me know. If you can get this on your next PW&S meeting that would be great.

**Matthew G. Sadowski**, MUP, AICP

Assistant Director/Principal Planner  
City of Racine  
Department of City Development  
730 Washington Avenue (Room 102)  
Racine, WI 53403  
Office (262)636-9152  
Fax (262)635-5347  
Direct E-mail: [msadowski@cityofracine.org](mailto:msadowski@cityofracine.org)  
Department Web Page: <http://www.cityofracine.org/Development.aspx>  
City Web Site: <http://www.cityofracine.org/>

Tina's Dress Boutique - 6th Street Facade Sign  
Page 1 of 2



Routed Sign Component finished with OneShot Enamel Paint, Flag Mounted and suspended by 1/2" diameter steel scrollbracket arms. Mounted to building facade with 3/8" d lag bolts through 4" x 6" tall mounting plates made from 1/4" steel, 4 mounting shies per plate.

Approved by: \_\_\_\_\_

Date \_\_\_\_\_

Changes \_\_\_\_\_

Client	Tina's Dress Boutique- 505 Sixth Street Racine, WI 53403	Scale	1/40	Sign Specifications	HDU High Density Urethane Sign base Routed and Painted with OneShot Enamels 3/8" lag bolt anchors 1/2" steel scroll bracket arms 4" x 6" x 1/4" thick steel mounting plates Opaque Vinyl Window Lettering	Colors	3M Process Magenta 3M Violet 3M Dark Brown Metallic Avery SC 900 Plumb White
Date:	Rev #	Date of Rev #	Drawing #	Salesman			
10-07-2014	3	10-29-2014	2	CS			
Electrical Requirements	Designer						
120 <input type="checkbox"/> 277 <input type="checkbox"/>	JP						

1405 16th Street, Suite 4272  
Racine, WI 53403  
262-770-4861 www.digitallsigns.com

NOTICE: The ideas and designs contained in this original and unpublished drawing are the sole property of Digit-It All Sign Company, LLC, and MAY NOT BE USED OR REPRODUCED in whole or in part without written permission.

NOTE: DUE TO THE PHYSICAL LIMITATIONS OF THE PAPER AND INK INVOLVED IN THIS PRINTING PROCESS, THIS CUSTOM ARTWORK IS NOT INTENDED TO PROVIDE AN EXACT MATCH TO THE ACTUAL FINISH PAINTED PRODUCT.



Client:

505 Sixth Street  
Racine, WI 53403  
262-898-1137

Design and Installation Firm:



1405 16th Street, Suite 4272  
Racine, WI 53403

## City of Racine Design & Review Proposal

### 6th and 7th Street Elevations Facade Sign Schematics - Revised Scale

