

Kari Dawson
Events Director, Real Racine
14015 Washington Avenue
Sturtevant, WI 53177

Mr. Tom Friedel, City Administrator
City Hall, Room 201
730 Washington Avenue
Racine, WI 53403

February 11, 2014

Dear Mr. Friedel,

Thank you once again for entertaining Real Racine's proposal to bring The Color Run back to downtown Racine for a third year.

This year's event is scheduled, pending Common Council approval, for Saturday, May 24 at 8 a.m. at Pershing Park. The park has already been reserved with the Racine Parks Department.

For 2014 we are planning to conduct the event exactly as it was held in 2013. Unless there is city objection, I feel last year's course, event layout and timetable worked well for the event, participants, neighbors and the downtown business community. The Color Run, of course, is very open to making any adjustments that will best meet the needs of the city.

We expect roughly 7,500 participants again for this event.

I have attached the following documents for to assist the city in the approval process:

- 1) Course map, including color zone locations
- 2) Tentative Pershing Park layout map
- 3) Schedule of events and event timeline
- 4) Neighborhood Notification sheet
- 5) Parking guide
- 6) DOT I-94/Hwy 20 travel notification and Driving Directions to be shared with participants
- 7) Extensive cleaning plan from TCR cleaning company

I would like to get The Color Run Racine on the Common Council committee agenda for approval as soon as possible.

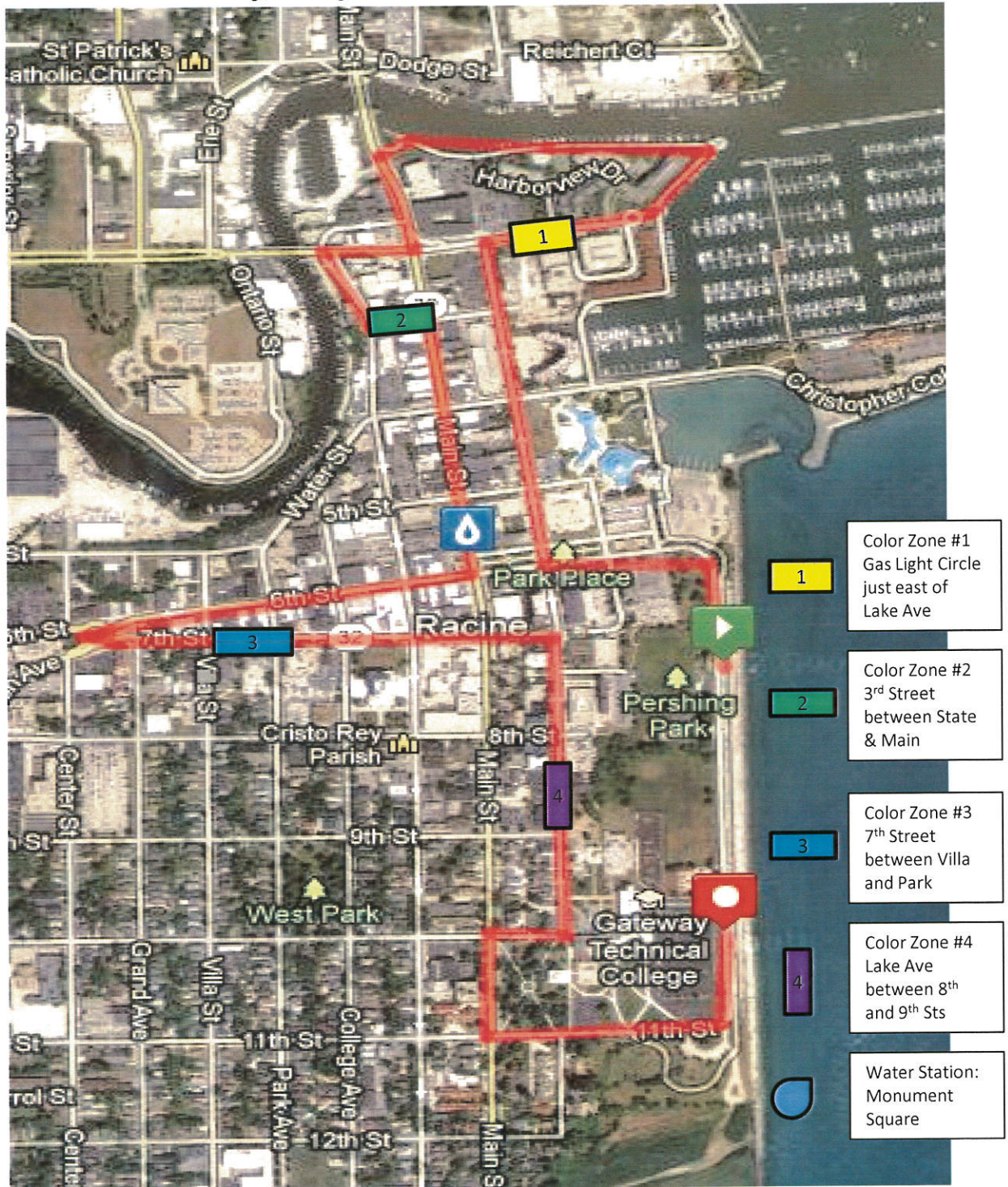
Thanks, Tom, for your support and consideration.



Kari Dawson
kari@realracine.com
(262) 898-3323

The Color Run Racine

Saturday, May 24 at 8 a.m. at Pershing Park



Start: Pershing Drive along the Lakefront
Finish: Pershing Drive near Gateway Tech College

THE COLOR RUN RACINE

Saturday, May 24, 2014

Race Start: 8:00 a.m.

Check-in starts at: 6:30 a.m.

Expected Event Conclusion: 11:30 a.m.

Runners Expected: 8,000

Spectators Expected: 5,000

Event Staging Area: Pershing Park

Start Line: 6th Street & Pershing Park Drive

Course:

(All lanes full road closures unless otherwise indicated.)

- 1) North on 6th Street to Lake Ave
- 2) North on Lake Ave to Gas Light Circle
- 3) East on Gas Light Circle to the Lake Michigan Pathway
***First Color Zone located on entrance to Pathway just past The Chancery
- 4) Take Lake Michigan Pathway east and back around to Main Street
- 5) South on Main Street to 2nd Street
- 6) West on 2nd Street and under the State Street Bridge and south on Wisconsin Ave
***Second Color Zone on Wisconsin Ave just south of the State Street Bridge near DP Wigley
- 7) East on 3rd Street to Main Street
- 8) South on Main Street to 6th Street
- 9) West on 6th Street to City Hall Roundabout
- 10) Runners go around roundabout. Stay on south half of 7th Street .
***Third Color Zone on 7th Street just past the roundabout.
- 11) East on 7th Street to Lake Avenue
- 12) South on Lake Ave to 10th Street
***Fourth Color Zone located on Lake Ave between 8th and 9th Streets. About 1 block south of YMCA.
- 13) West on 10th Street to Main Street
- 14) South on Main Street to 11th Street
- 15) East on 11th Street and around to Pershing Park Drive.

Finish: Near Gateway parking lot

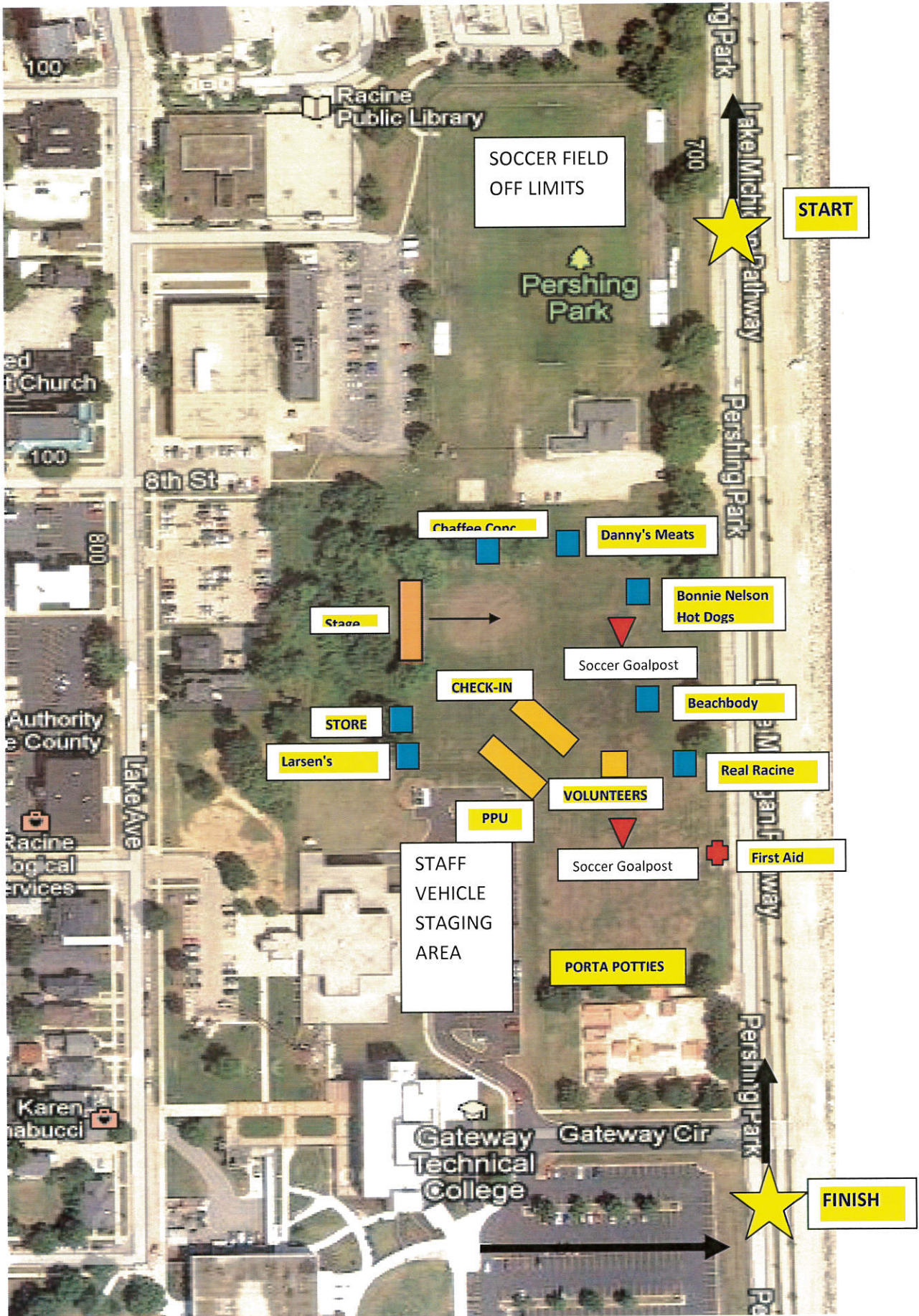
Road Closures: Roads---not in direct proximity to Color Zones--will remain open until race time.

Roads not near Color Zones will reopen shortly after last runners pass. Approximate time: 10:15 a.m.

No Parking: No Parking signs will be posted on course per the instruction of police and city officials. No parking will be allowed on either side of the streets on the course starting at 3 a.m. through 12 noon on Saturday, May 24.

Parking Ramps: The Color Run is buying out all public parking ramps downtown, so guests will have free access all day to the ramps.

2014 The Color Run Racine 5/24
Tentative Event Map



2014 The Color Run Racine

Tentative Schedule of Events

Wednesday, May 21

- 10:00 a.m. Kari has final meeting with city leaders, DPW & Police
- 12:00 p.m. Staff begins to arrive
- 1:00 p.m. Pick up box trucks from Ryder; load equipment from warehouse
- 4:00 p.m. Drop equipment at Real Racine. Begin Packet Pickup (PPU) setup.
I-94/Highway 11 directional signage in place
- 5:00 p.m. Staff meeting and dinner

Thursday, May 22

- 7:30 a.m. Staff reports to Real Racine
- 8:30 a.m. Volunteers report to Real Racine
- 9:00 a.m. PPU opens at Real Racine
- 6:00 p.m. PPU closes at Real Racine
Overnight security arrives

Friday, May 23

- 8:00 a.m. Staff reports to Real Racine
- 8:30 a.m. Volunteers report to Real Racine
- 9:00 a.m. PPU Opens
- 12:00 p.m. TCR Staff stationed at Pershing Park to receive equipment deliveries:
Golf carts, forklift, scaffolding, portable toilets, dumpsters, trash & recycling.
Stage setup begins.
Start & Finish setup begins (will not block roads)
DPW drops course barricades in position (TCR to set them up)
- 5:00 p.m. No Parking signs go up
Directional signage from I-94 and throughout downtown goes up
Equipment dropped in front of Color Zones (security will arrive to man zones)
- 6:30 p.m. TCR Staff meets at Pershing to setup for race day
- 7:00 p.m. Overnight security arrives at Pershing
- 8:00 p.m. TCR Staff departs for the night

Saturday, May 24

- 5:00 a.m. TCR Staff reports to Pershing
- 5:30 a.m. Course setup begins (will not block roads)
- 6:00 a.m. City parking ramps to open
- 6:15 a.m. Volunteers arrive
- Water delivery to Monument Square and Pershing Park
- Pershing Park--TCR ready to go live
- 6:30 a.m. Check-in (PPU) opens
- 7:00 a.m. Announcements begin on stage
- 7:15 a.m. Zumba begins on stage (amplified sound)
- 7:30 a.m. All course police officers in place
- 7:45 a.m. Start corral opens
- Course road closures begin
- 8:00 a.m. Race starts
- 8:05 a.m. First runners through Color Zone #1
- 8:08 a.m. First runners through Color Zone #2
- 8:12 a.m. First runners through Color Zone #3
- 8:15 a.m. First runners through Color Zone #4
- Music/MC begins on stage
- 8:18 a.m. First runners through Finish
- 8:45 a.m. First color throw at stage (Will occur every 15 minutes through conclusion of event)
- 9:10 a.m. All runners through Color Zone #1--Cleanup begins
- 9:20 a.m. All runners through Color Zone #2--Cleanup begins
- 9:45 a.m. All runners through Color Zone #3--Cleanup begins
- 10:00 a.m. All runners through Color Zone #4--Cleanup begins
- 10:30 a.m. Course officially closed
- 11:00 a.m. Last color throw at stage
- 11:30 a.m. Event official over. Pershing Park cleanup commences.
- 2:00 p.m. Pershing Park and course cleanup complete. Kari to survey course and park with city leaders for approval
- Portable toilets picked up
- Rental equipment to be stored inside of gated soccer field area for Tuesday pickup.
- Trash & recycling containers to be lined up in corner of Gateway lot for Tuesday pickup.

Tuesday, May 27

- 9:00 a.m. Equipment picked up

THE COLOR RUN™

NEIGHBORHOOD EVENT NOTICE

On **SATURDAY, MAY 24** downtown Racine will host, for the third year, The Color Run 5k. As many as 8,000 participants are expected.

Learn more about this event at: www.thecolorrun.com/racine

The race starts at 8 a.m. and begins on Pershing Drive in front of Pershing Park. Participants will be staged along Pershing Drive starting at 7:45 a.m.

The race winds through downtown and finishes on the south end of Pershing Drive near Gateway Technical College.

Because of this event, there will be several temporary, full road closures in the downtown area. There is a map on the opposite side of this notice.

There will be **NO PARKING** along both sides of the designated race course from 3 A.M. UNTIL NOON ON SATURDAY, MAY 24. Cars remaining on the course may be ticketed or towed.

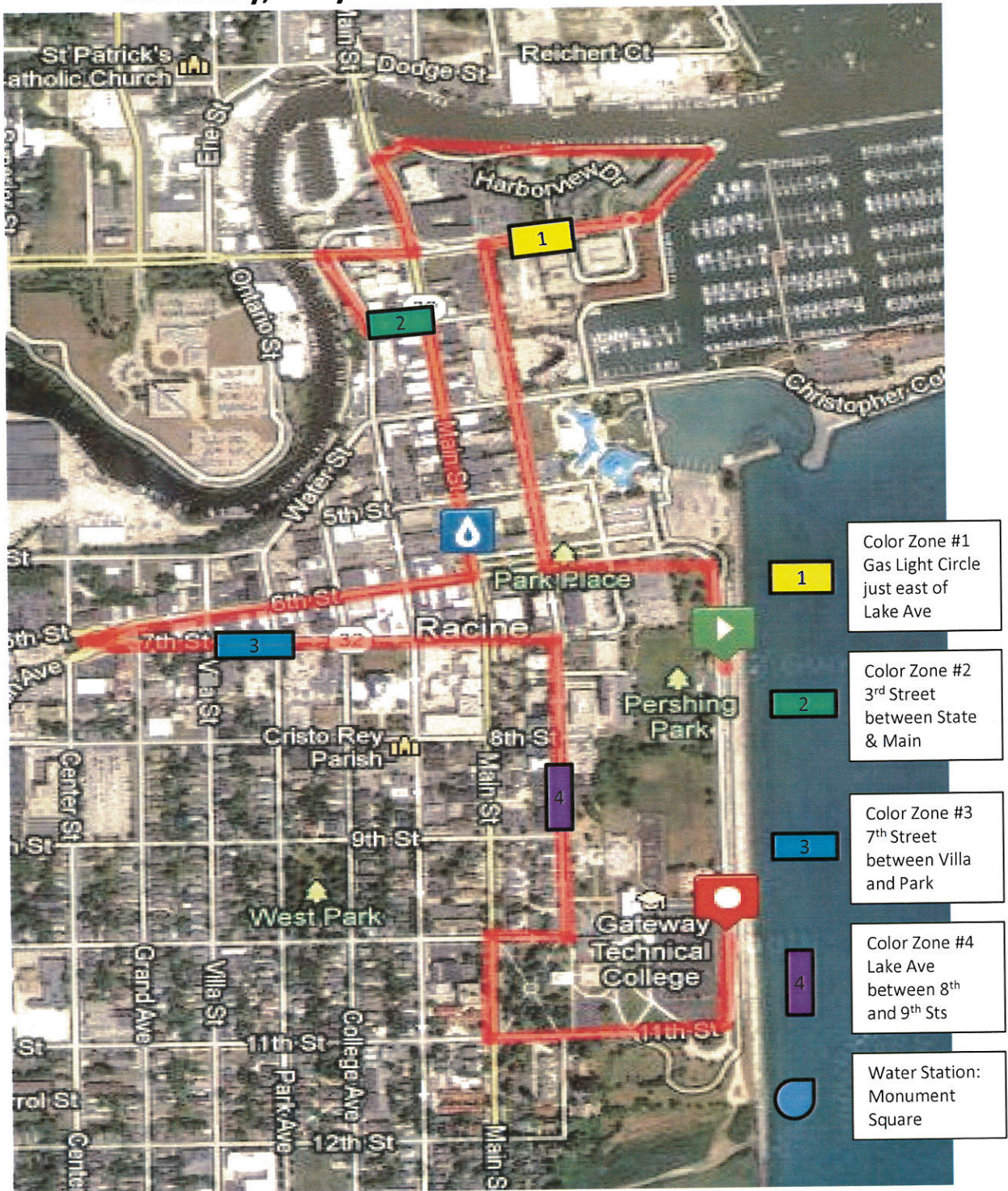
Roads along the course will be shut down to vehicular traffic from approximately 7:30-10:30 A.M. on SATURDAY. Some areas will experience additional delays.

Streets will begin to reopen (starting early on the route first), once all runners make their way through that section of the course.

We apologize for the inconvenience and thank you for your support and understanding. Please be assured the city and race crews will restore the area to its beautiful pre-race condition at the conclusion of the event.

The Color Run Racine

Saturday, May 24 at 8 a.m. at Pershing Park



Start: Pershing Drive along the Lakefront
Finish: Pershing Drive near Gateway Tech College

Getting to Downtown Racine

1. FROM THE SOUTH:

Take I-94 north to Exit #335 Highway 11/Durand Avenue. Head east. Take a left on Highway 32/Racine Avenue. Take a right on 14th Street....a left on Main Street...and a right on 11th Street. Park in the Gateway Technical College parking lots or along the lakefront. Look for THE COLOR RUN parking directional signs.

***NOTE: Highway 11/Durand Avenue is the BEST option coming from the south. Due to construction, the exits to Highway 20/Washington Avenue will be closed during the event.

2. FROM THE NORTH (Option #1):

Take I-94 south to Exit #329 County Trunk K/Northwestern Avenue. Head east. Northwestern turns into Highway 38. Take to State Street. Check map for plenty of available parking.

3. FROM THE NORTH (Option #2--Restaurants and Retailers):

Take I-94 south to Exit #333 Highway 20/Washington Avenue. Head east. This will take you past a variety of restaurants and retailers. Take Highway 20 about 8 miles east. When you get to the divide with 14th Street, stay on 14th Street to the right. Take a left on Main Street. Pershing Park will be about 3 blocks up on your right.

The Run

C L E A N



Contained and ZERO discharge to storm drain watershed

Renaissance Services

We are so excited to have this opportunity to work with The Color Run in your city. We are the cleaning company that safely and quickly removes the color that once was , from your city until our next visit!

We are Renaissance Services. Our company has successfully cleaned The Color Run event across the country in virtually every market, every weather condition and course conditions with zero discharge to the storm drain water shed. Our cleaning goal is full containment at minimum, and 100% compliant with local and federal guidelines. We are constantly improving the cleaning process to exceed local and federal standards, create a safer, more simply contained event for each city.

Many of the methods of the clean up involved with The Color Run venues have not been done before, in the way we do them.

Some factors that we consider for each venue:

- Best method of containment and cleaning
- storm water contingency and flow
- pre-cleaning of the course
- weather conditions

Each factor above can, and usually does, differ with each city and venue. This takes weeks of prior thinking and preparation to be able to be successful in each city.

Fire Hydrants

If fire hydrant use is available, they will be a part of the cleaning process. They will be used to fill water tanks on sweepers, water trucks, pressure washer tanks and, as a last resort, with the clean-up in the event of another component or piece of equipment fails or doesn't work. This provides us with a contingency water source. If hydrant access is not possible we will obtain water via garden hose access or have the water delivered.

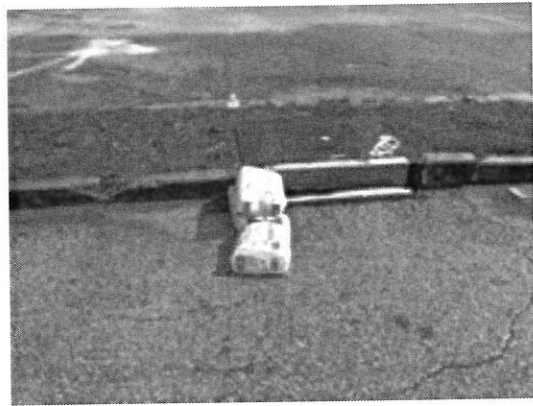
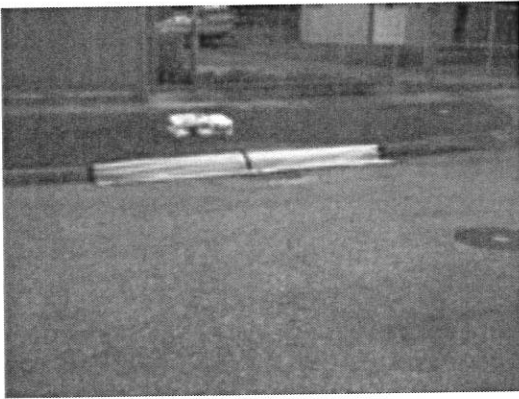
Renaissance Services is fully aware of how to obtain fire hydrant meters when required as per city guidelines. We will get the proper permission and permits, install back flow preventers and all fees that apply, if necessary.

“Waterless Method”

There are two primary ways to most effectively clean The Color Run event. The first is with as little water as possible, “The waterless method”. This is the most preferred method.

Our cleaning begins the week before the event. We pre-clean the course, removing both small and large debris, rocks and anything else cluttering the course. We hand sweep each color zone, start chute, finish chute and the festival area.

Visqueen media barriers will be applied to all storm drain access points within color zones 1,2,3,4, start chute, finish chute, and the festival area to block discharge of any trash, debris and residual water drainage from traveling into the storm sewer system. Evaporation

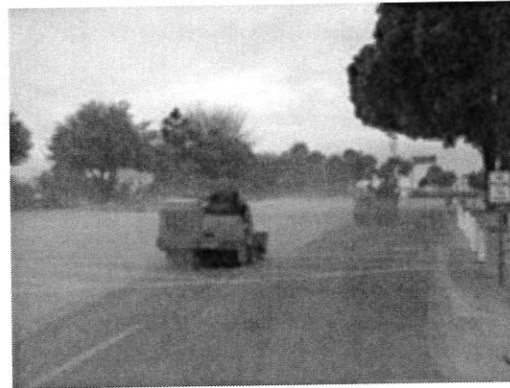


containment barriers will be installed before storm drain openings to capture residual water and color that could travel to the already installed visqueen media barriers. Leftover residual water that does not evaporate will be removed along with any remaining color.

The day of the event, cleaning will begin immediately on the heels of the last runner. We will hand sweep with volunteers and push brooms all of the powder to the center of the color zone. Powder will be scooped into the color barrels that it arrived in.

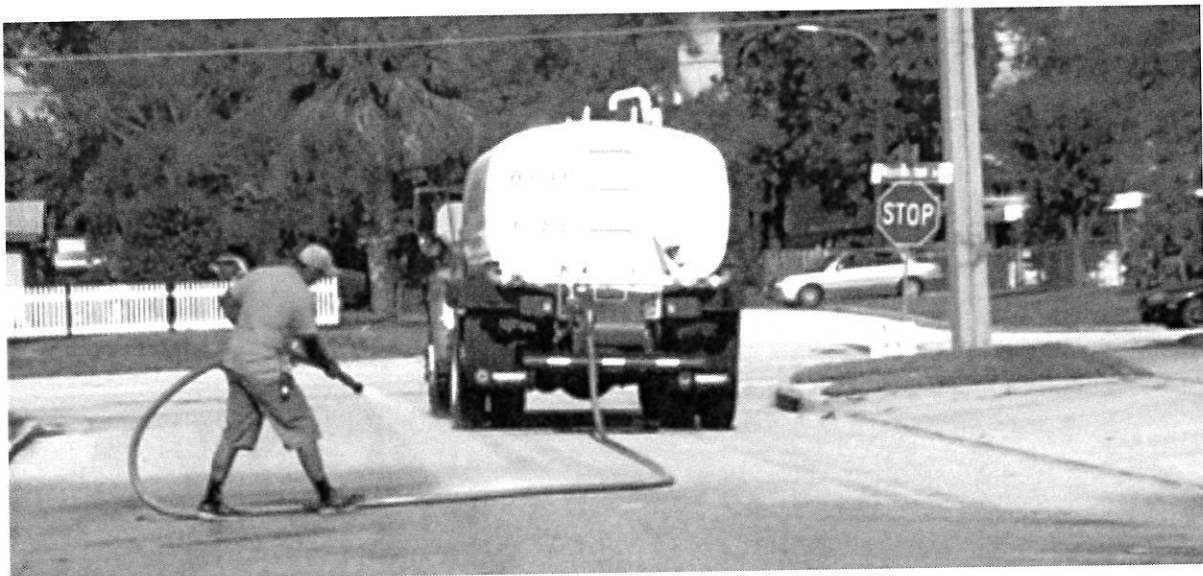


A ride on, self contained vacuum sweeper will be used to pick up additional powder. These units are more effective than large street sweepers and are far superior for dust containment compared to commercial vacuum trucks and regenerative air sweepers.



All components of the color zone will then be quickly removed from the course. At this point, the remaining color on the surface is a hue of the powder that was previously moved.

Our oxidizer is then lightly applied by misting it onto the surface. The amount applied to the surface is only enough moisture to wet the surface and evaporate. This step will eliminate any residual color and negate the need to pressure wash the applicable surfaces to avoid any discharge to the storm sewer system.



In anticipation of rain and/or dealing with cities that have combined storm and sanitary systems, and all water is treated together, we use the “water clean up” method.

“Water Clean Up”

In the event of a chance of rain, we divert the water flow within each color zone and festival area to a collection point that follows the existing grade/flow.

The colored water will be sent to an open grass collection point or storage container where color will be contained and disposed of. The water diverted to an open grass area will be allowed to percolate, the color is very inert at this point, and the remaining color will be gathered and disposed of in one of our rented, onsite dumpsters.



We are very aware of the sensitive nature of our cleaning processes and always make sure we comply with all regulations, codes and laws of each individual city as well as federal standards.



Kaleid scope :

Water soluble confetti is thrown throughout the final chute to the finish festival. Confetti is raked and blown to a central collection point and picked up with an industrial leaf collector, rakes and vacuums. Confetti is then bagged up and recycled.

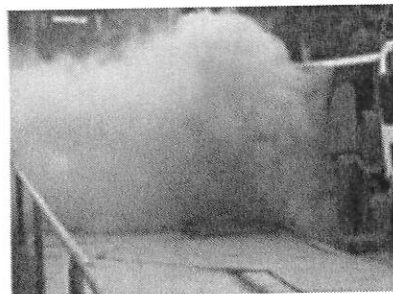


Leaf Blowers:

Sometimes it is necessary to use leaf blowers to remove lite residual color that may have settled on plants, sidewalks or other outer lying objects near the color zone, but not within the main color distribution area. These are used only in specific areas and special circumstances.

Large Street sweepers:

Due to color fall out, large regenerative air street sweepers are not used. They tend to spread the powder, rather than effectively clean it.



We are very serious about our clean up and strive to make our processes more effective with every race we complete. No short cuts are taken, no corners are cut. We do it right every time in order to protect each city we visit, our interests and THE COLOR RUN. We want to build a long term relationship with all parties involved for future successful events.

If there are any further questions or concerns, please feel free to contact me, Barney Boynton, and I will gladly answer and explain in deeper detail any parts of our clean up process.

I have attached all MSDS sheets for each color, confetti and cleaning solutions.

All of our methods are proprietary, with patents pending. If further examples of our work are needed, we have more documentation, pictures, references, etc. if necessary.

Thank you for your time, we look forward to working with you!

Barney Boynton, owner

Renaissance Services

o: 801-244-1363

m: 801-864-1314

renaissance-services@live.com

References:

Terry Carr- 904-255-7173

Environmental Program Supervisor, EQD Division, City of Jacksonville Florida

Kurt Fremont- 253-502-2238

Environmental Specialist, City of Tacoma, Washington

Michael Alexander- 407-246-2153

Environmental Specialist, City of Orlando, Florida

To whom it may concern,

I was very involved with the Color Run that took place in Anchorage, Alaska in June, 2013, including all permitting, route choice, traffic control planning, and the clean up. The Color Run and their post-race cleanup crew, Renaissance Services, covered up all storm drains and nothing went into the sewer system or the creeks. I had them speak to our Street Maintenance supervisor prior to issuing their permit and, after they spoke, he had no concerns about the clean up.

During the clean-up, they used a 4-step process:

1. Push brooms
2. Leaf blowers
3. Street Sweepers
4. Pressure washers

After the pressure washer crews came though, you couldn't even tell there was ever any powder on the roads. They wiped down everything, including the trees and fences - whatever had any residual color on it, they cleaned it up. They did not just clean up the streets, they went into the sidewalks and even past that to clean up whatever was around. Their goal is to make it look better than before they were there. We did have one neighbor who complained about the powder, claiming that he was out of town, had left some windows open, and when he came home, he had blue powder all over. I don't know how accurate his claims are, but the Color Run team offered to pay for a professional cleaning company to come in and take care of him. I do not know if this homeowner ever responded to them.

I can say that they (and please note, we had THE COLOR RUN up here. There are many other knock-off organizations: Color Vibe, Graffiti Me, etc.) were absolute pros and knew exactly what to do. They had the race and the post-race cleanup down to a science. I cannot attest to what occurred in other cities where the Color Run has taken place, but I can say that the Anchorage run and cleanup was very successful.

Thank you.

Shane Locke
Engineering Technician IV
Municipal Traffic Division
4700 Elmore Rd.
Anchorage, Alaska 99507
Ph: (907) 343-8413 Fax: (907) 249-7781

To Whom it may concern,

Barney and his crew were exceptional to work with during the Color Run 5k 2013. Everything from the preparation (covering street drains with plastic to keep the color out of the drains) to the clean up afterwards (street sweepers, pressure washers, blowers, all working in unison). After the event was over they had not only our footprint but the city streets cleaned and clear in a matter of hours after the event. They are by far the best group to work with as far as the Color 5k groups go.

Please feel free to call me if you have any questions.

Best Regards,

Alex Hall

Event Manager

Liberty Bowl Memorial Stadium and Fairgrounds

Work: 901.729.4344

Cell: 901.494.1124

Fax: 901.276.2756



POWDER PROCESSORS

216 N 700 W BDLG 4C • OGDEN UT • 84401 • TEL: 801-612-2223 • FAX: 801-612-2224

MATERIAL SAFETY DATA SHEET

Section 1 – Substance Identity and Company Information

PRODUCT NAME: PINK

MANUFACTURE'S NAME: Powder Processors, Inc.
ADDRESS: 216 N. 700 W. Bldg 4C
Ogden, UT 84404

TELEPHONE: 801-612-2223
FAX: 801-612-2224

Section 2 – Composition / Information on Ingredients

INGREDIENT: FD and C Red 40 Lake 36-42 PCT, Melojel Starch
MOLECULAR FORMULA: N/A
MOLECULAR WEIGHT: N/A
CAS NUMBER: N/A

Section 3 – Hazards Identification

Potential Health Effects

Oral Exposure

Swallowing this material is not likely to be harmful

Dermal Exposure

Unlikely to cause skin irritation or injury.

Inhalation Exposure

This material is a dust or may product dust. Breathing small amounts of this material is not likely to be harmful.

Eye Exposure

Dust can cause eye irritation. Symptoms may include stinging, tearing redness and swelling of eyes.

Symptoms of Exposure

No data

Other Health Effects

This material can form dust, which may cause skin or mucous membrane irritation. Symptoms may include redness, burning, and swelling. Although they may cause



POWDER PROCESSORS

216 N 700 W BDLG 4C * OGDEN UT * 84401 * TEL: 801-612-2223 * FAX: 801-612-2224

MATERIAL SAFETY DATA SHEET

Section 1 – Substance Identity and Company Information

PRODUCT NAME: YELLOW

MANUFACTURE'S NAME: Powder Processors, Inc.
ADDRESS: 216 N. 700 W. Bldg 4C
Ogden, UT 84404

TELEPHONE: 801-612-2223
FAX: 801-612-2224

Section 2 – Composition / Information on Ingredients

INGREDIENT: FD and C Yellow 5 Lake 36-42 PCT, Melojel Starch
MOLECULAR FORMULA: N/A
MOLECULAR WEIGHT: N/A
CAS NUMBER: N/A

Section 3 – Hazards Identification

Potential Health Effects

Oral Exposure

Swallowing this material is not likely to be harmful

Dermal Exposure

Unlikely to cause skin irritation or injury.

Inhalation Exposure

This material is a dust or may product dust. Breathing small amounts of this material is not likely to be harmful.

Eye Exposure

Dust can cause eye irritation. Symptoms may include stinging, tearing redness and swelling of eyes.

Symptoms of Exposure

No data

Other Health Effects

This material can form dust, which may cause skin or mucous membrane irritation. Symptoms may include redness, burning, and swelling. Although they may cause



POWDER PROCESSORS

216 N 700 W BDLG 4C • OGDEN UT • 84401 • TEL: 801-612-2223 • FAX: 801-612-2224

MATERIAL SAFETY DATA SHEET

Section 1 – Substance Identity and Company Information

PRODUCT NAME: BLUE

MANUFACTURE'S NAME: Powder Processors, Inc.
ADDRESS: 216 N. 700 W, Bldg 4C
Ogden, UT 84404

TELEPHONE: 801-612-2223
FAX: 801-612-2224

Section 2 – Composition / Information on Ingredients

INGREDIENT: FD and C Blue 1 Lake Low, Melojel Starch
MOLECULAR FORMULA: N/A
MOLECULAR WEIGHT: N/A
CAS NUMBER: N/A

Section 3 – Hazards Identification

Potential Health Effects

Oral Exposure

Swallowing this material is not likely to be harmful

Dermal Exposure

Unlikely to cause skin irritation or injury.

Inhalation Exposure

This material is a dust or may product dust. Breathing small amounts of this material is not likely to be harmful.

Eye Exposure

Dust can cause eye irritation. Symptoms may include stinging, tearing redness and swelling of eyes.

Symptoms of Exposure

No data

Other Health Effects

This material can form dust, which may cause skin or mucous membrane irritation. Symptoms may include redness, burning, and swelling. Although they may cause



POWDER PROCESSORS

216 N 700 W BDLG 4C * OGDEN UT * 84401 * TEL: 801-612-2223 * FAX: 801-612-2224

MATERIAL SAFETY DATA SHEET

Section 1 – Substance Identity and Company Information

PRODUCT NAME: GREEN

MANUFACTURE'S NAME: Powder Processors, Inc.
ADDRESS: 216 N. 700 W. Bldg 4C
Ogden, UT 84404

TELEPHONE: 801-612-2223
FAX: 801-612-2224

Section 2 – Composition / Information on Ingredients

INGREDIENT: FD and C Blue 1 Lake Low, FD and C Yellow Lake 36-42 PCT, Melojel Starch
MOLECULAR FORMULA: N/A
MOLECULAR WEIGHT: N/A
CAS NUMBER: N/A

Section 3 – Hazards Identification

Potential Health Effects

Oral Exposure

Swallowing this material is not likely to be harmful

Dermal Exposure

Unlikely to cause skin irritation or injury.

Inhalation Exposure

This material is a dust or may product dust. Breathing small amounts of this material is not likely to be harmful.

Eye Exposure

Dust can cause eye irritation. Symptoms may include stinging, tearing redness and swelling of eyes.

Symptoms of Exposure

No data

Other Health Effects

This material can form dust, which may cause skin or mucous membrane irritation. Symptoms may include redness, burning, and swelling. Although they may cause

MATERIAL
SAFETY DATA SHEET

Date of Preparation May 20, 2013

Shore Manufacturing Company
222 Beade Street
Plymouth, PA 18651
570.779.4042

SECTION I

Product Name: Flame Resistant Tissue Paper
Common Name: Flame Resistant Tissue Paper

SECTION II

INGREDIENTS

COMPONENT	CAS#	% BY WEIGHT
PEL/TLV		
Ammonium Sulfate Not Established	7783-20-2	1.5 %
Dissociated Ammonia Not Established	7664-41-7	1.5 %
** Pigment Not Established	Proprietary	---
* Acrylic Resin Not Established	Proprietary	---

* Industrial Coating Resin- Not Hazardous Material as defined in 29CFR1915-2
**No Heavy Metals as defined in CONEG LEGISLATION.

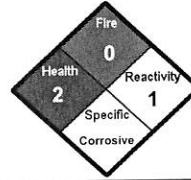
SECTION III

PHYSICAL DATA

Boiling Point: NA
Vapor Pressure: Negligible
PH: NA
Solubility in Water: Soluble
Appearance: Colored or White Tissue Paper



Horizon Chemical Co., Inc
 2125 Energy Park Drive, St. Paul, MN 55108
 651.917.3075 • FAX 651.917.3087



MATERIAL SAFETY DATA SHEET

PRODUCT NAME: SODIUM HYPOCHLORITE 6-16% **DATE:** 1/21/2004

MANUFACTURER'S NAME: Vertex Chemical Corporation
 9909 Clayton Road
 Suite 219
 St. Louis, MO 63124
 314.991.4005

DISTRIBUTED BY: Horizon Chemical Co., Inc.
 2125 Energy Park Drive
 St. Paul, MN 55108
 651.917.3075

NATIONAL EMERGENCY RESPONSE CENTER: 1-800-424-8802
FOR EMERGENCY DURING TRANSPORTATION ONLY: 1-800-535-5053

SECTION I - PRODUCT IDENTIFICATION

TRADE NAME: Horizon Liquified Chlorinator **SYNONYMS/ COMMON NAMES:**
 Liquid Bleach, Soda Bleach, VERTEX CSS-6, VERTEX
 CONCENTRATE, VERTEX CSS-10, VERTEX CSS-12, VERTEX
 Germicidal Ultra Bleach, Chlorine, Horizon Liquified Chlorinator.

PRODUCT USE: Sanitation

CHEMICAL NAME: Sodium Hypochlorite

CHEMICAL FORMULA: NaOCl

CHEMICAL FAMILY: Oxidizing Agent (Hypochlorite) **SHIPPING NAME & HAZARD CLASS- (DOT):**
 Hypochlorite Solution 8
 Corrosive Material, UN1791
 PG III, RQ (Sodium Hypochlorite)

CAS NO.: 7681-52-9

SECTION II - EMERGENCY RESPONSE INFORMATION

HEALTH HAZARDS: See Section VI **FIRE OR EXPLOSION:** See Section IX

IMMEDIATE PRECAUTIONS: WASH FROM EYES: Section V, First Aid
 Section X, Reactivity
 Section XI, Spill, Leak & Disposal Procedures

SPILLS OR LEAKS: See Section XI **FIRST AID:** See Section V

SECTION III - COMPOSITION

COMPONENT	CAS NO.	% by weight	PEL	TLV	OTHER	HAZARD
Sodium Hypochlorite	7681-52-9	6-16	None	None	None	Corrosive/Oxidizer
Sodium Chloride	7647-14-5	5-13	None	None	None	None
Sodium Hydroxide	1310-73-2	0.2-4.0	2MG/M3	2MG/M3	None	Corrosive
Water	7732-18-5	Balance	None	None	None	None