



MADISON-CHICAGO 200

---- 200-MILE RELAY RACE ----

www.mc200.com

March 4, 2009

Mr. Donnie Snow
Director of Parks, Recreation & Cultural Services Department
City of Racine
800 Center St., Room 127
Racine, WI 53403

Re: **MADISON-CHICAGO 200 RELAY ("MC200"), JUNE 13TH, 2009**
FACILITY REQUEST FOR USE OF NORTH BEACH PARK AND PARKING LOT

Dear Mr. Snow:

We kindly request permission for the use of North Park Beach (the "Facility") for our annual event, the Madison-Chicago 200 Relay. The 2009 MC200 is scheduled for June 12th and 13th, 2009.

I have attached a summary of this year's event for your review, which includes an explanation of the impact of the event on the North Beach Park area. Our plan is, in essence, unchanged from last year.

Wilson Sporting Goods has again agreed to make a donation of sporting equipment on our behalf to Racine youth sports. Last year, Wilson donated baseball equipment to Racine Youth Baseball. We will be in contact with your Department to arrange for a similar donation this year. We thank you for taking this donation into consideration in reviewing our request. This year, a parent group from Waterford High School has expressed interest in providing volunteer assistance to us at this location, and we will make a donation to this group in return for their help. This is in keeping with one of the goals of our event, which is to give something back to the communities that allow us to hold this event in their towns.

We also enclose our "Facility Request" Form, and our check in the amount of \$350, which covers our \$150 facility rental fee and \$200 returnable deposit.

If you have any questions regarding this event, you may call me at any time at either 708-386-4660 (landline) or 917-318-4945 (mobile).

Thank you and regards,

RELAY PRODUCTIONS LLC



Thomas J. Hepperle

RELAY PRODUCTIONS LLC

Joe Pulizzano – Relay Director
(608) 219-4613
joe@mc200.com

Thomas J. Hepperle – Associate Relay Director
(708) 386-4660
tom@mc200.com



MADISON-CHICAGO 200

---- 200-MILE RELAY RACE ----

www.mc200.com

Event Overview:

- Event Name:** Madison-Chicago 200 ("MC200")
- Organizers:** Relay Productions LLC, Middleton, WI
- Type of Race:** 200-Mile Running Relay Race
- Size of Event:** Registration is capped at 200 teams, comprised of up to 12 members
- Maximum number of individual participants: 2,400
 - As a relay race, *only up to 200 people will actually be running on the course at any point in time.* All other team members will be traveling in team support vans.
- Date:** Begins: Friday, June 12, 2009 in Madison, WI (Sheraton Hotel)
Ends: Saturday, June 13, 2009 in Chicago, IL (Montrose Harbor)
- Charity Beneficiaries:**
- Special Olympics of Wisconsin and Illinois
 - Girls on the Run - Chicago

Description of Course / Impact of Race on North Beach Park, Racine, WI:

- The Madison-Chicago 200 Relay is comprised of 36 "Legs". At the end of each Leg is the runner exchange area. This is where runners pass the baton to the teammate who will run the next Leg. This location is called the "Transfer Area" or "TA". Each TA is numbered.
- **North Beach Park** is "TA-25". TA-25 is 134.6 miles into the race. The hours of operation of TA-25 are from **3:00 a.m.** to **8:00 a.m.** on **Saturday, June 13, 2009.**
 - **Leg 25** begins at St. Andrew Lutheran Church, Racine, WI, and ends at North Beach Park. **Leg 26** begins at North Beach Park, and ends at Dr. Beatrice O. Jones Elementary School, Racine, WI.
 - **Leg 25** enters North Beach Park at the intersection of **Goold Street** and **Michigan Blvd.** The first runners are expected to reach this intersection by approximately **3:00 a.m.** The last runner should pass through this intersection before approximately **8:00 a.m.**
 - Runners will head south on the path alongside **Michigan Blvd.** to **Kewaunee Street.** **TA-25** will be set up near the Gazebo at Kewaunee Street. This is where the runner of Leg 25 will pass the baton to the runner of Leg 26.

- The runner of **Leg 26** will continue southbound alongside **Michigan Blvd.** out of North Beach Park, toward **Dodge St.**
- Teams transport themselves through the course in up to two “**Support Vans**”. Teams are instructed to use standard-sized passenger vans. Recreational Vehicles are not permitted in the race. The Support Vans pick-up and drop-off the runners at the TA’s.
 - The **Support Vans** will park in the Parking Lots at North Park Beach just east of the Gazebo, as they wait for their runners to complete the 5.4-mile Leg from St. Andrew Lutheran Church. After the runner exchange is made, the Support Vans will leave the Parking Lots to meet their runner at TA-26, Dr. Beatrice O. Jones Elementary School. They must arrive before their runner completes this 6.5-mile Leg.
 - We have planned for no more than 100 Support Vans to use the North Beach Park Parking Lots for this purpose over the 5-hour period that the TA will be in operation.
 - Based on registrations as of this date, it appears unlikely that there will be 100 Support Vans passing through North Beach Park for the event this year. Our current estimate is 60 to 70 Vans.
 - The Support Vans’ use of the Parking Lots will be **spread out** over the 5-hour period that the TA will be operating. (i.e.: There will never be 100 Support Vans present in the Parking Lot at any one time. The Vans will arrive throughout the 5 hour period from 3:00 a.m. to 8:00 a.m., and must leave soon after the runner exchange is made, in order to meet their runner at the next TA.)
 - ***We ask for permission for the Support Vans to use these Parking Lots.***
- The TA will be managed by a member of the **Racine County R.A.C.E.S./A.R.E.S. Ham Radio Operators** (known as the “Site Manager”).
 - The Ham Radio Operators will notify the Racine Police Department about the event, and be in contact with law enforcement agencies and EMT units as needed, and with all other Ham Radio Operators on the course, continuously, in case of emergencies.
 - We are in discussion with a parents group from **Waterford High School** to assist the Site Manager with spotting incoming runners, directing Support Vans safely into, and out of, the Parking Lots, crowd management and clean-up. The MC200 will make a donation to this group in return for their volunteer support.
- We will be responsible for clean-up of the Transfer Area when we leave at 8:00 a.m.

Other Notes:

- All Relay Teams have been informed that this is an **“Open Course”**.
 - No street closures are requested. No barricades will be used.
 - All traffic signals, and laws, are to be observed and obeyed.
- There will be no amplified sound. Runners will be advised that this area is a residential “quiet zone”, and thus, to keep noise levels down in this area (as with all residential areas on the course).
- Two Port-A-Johns will be placed at an acceptable location near the runner exchange area, and picked up by the vendor after the event is over.
- Volunteer Groups, such as Waterford High School, have been invited to use the MC200 to raise funds for their group if they would like to. We have suggested selling small, inexpensive food items (e.g.: coffee, baked items, etc.). Any and all proceeds raised from such activity will be earned for the sole benefit of the volunteer group.
- Several signs (18” X 12’), each with a large, red, reflective “directional arrow” will be hung at strategic points along the route, to advise runners where to turn, or just to re-assure them that they are “on course”. In the North Beach Park area, we plan to hang directional arrows at:
 - Main Street and Goold Street (2 signs pointing east)
 - Goold Street and Michigan Blvd. (1 sign pointing south)
 - Michigan Blvd. and English Street (1 sign pointing south)
 - Michigan Blvd. and Dodge Street (2 signs pointing west)
- ❖ Directional signs will be hung primarily on the left side of the street, or in locations that can be seen by the runners - who will also run on the left side of the street. Care will be taken to place the directional signs in locations that will not cause these signs to be confused with traffic signals.
- ❖ All signs will be fastened with nylon ties, or possibly mounted on free-standing wire stanchions in places where there are no poles on which to hang a sign.
- ❖ We plan to hang signs no earlier than June 11th.
- ❖ All signs will be removed by a “sweep crew” that will follow the last runners through the course.

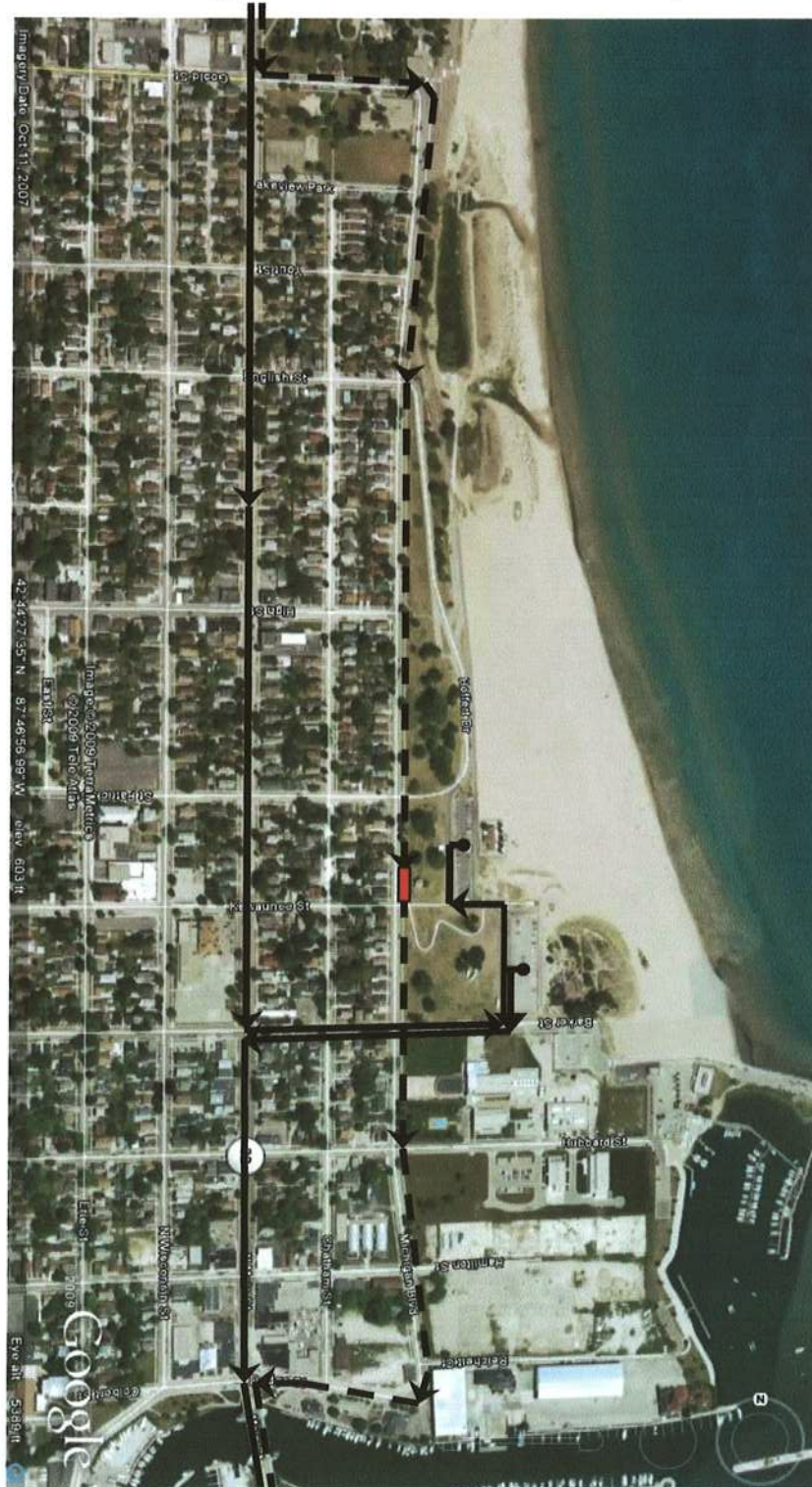


MADISON-CHICAGO 200

---- 200-MILE RELAY RACE ----

[WWW.MC200.COM](http://www.mc200.com)

Course Route through TA25-North Beach Park, Racine, Wisconsin



--> Path of Runners -> Path of Team Support Vans ■ Runner Transfer Zone