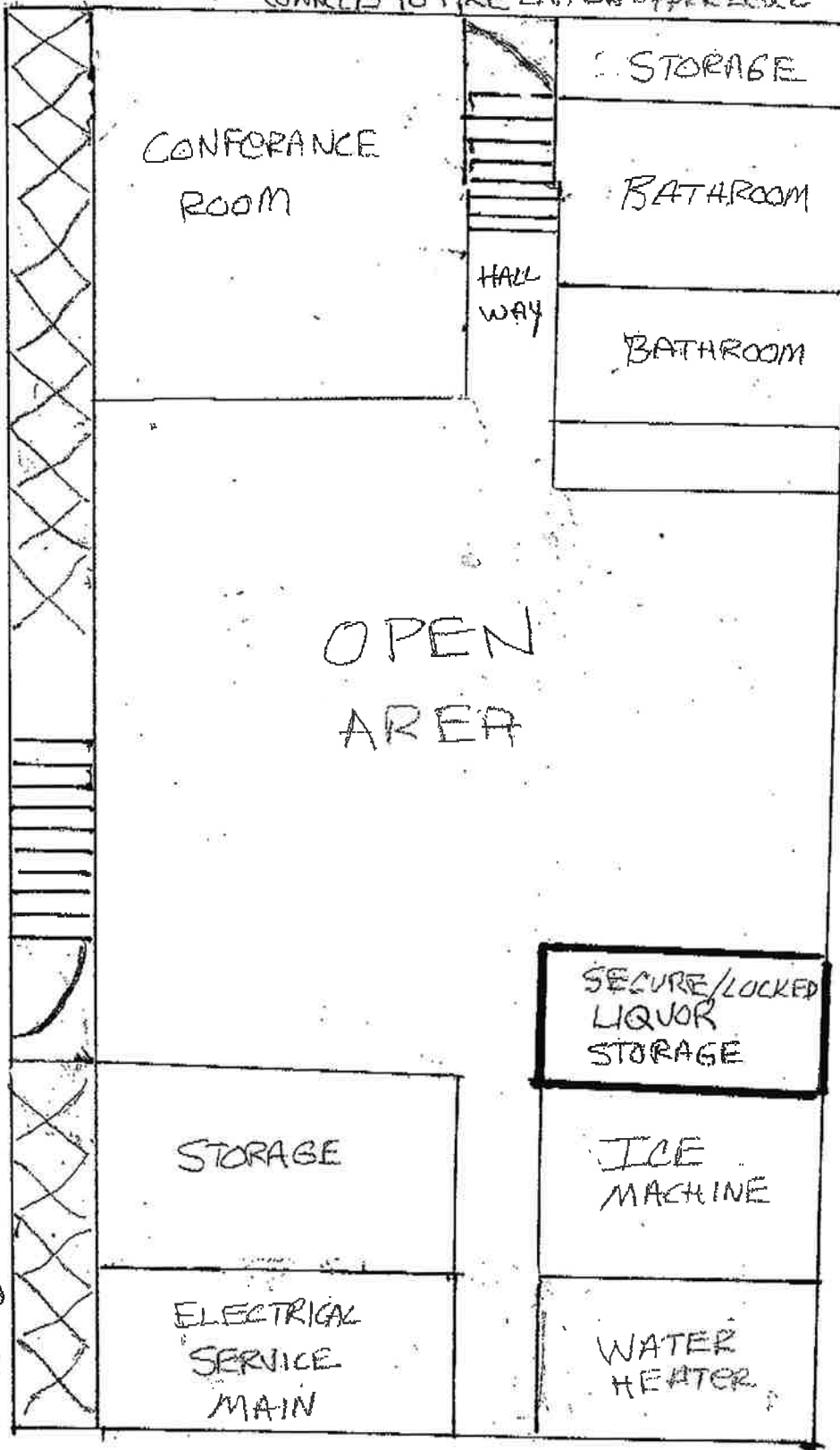


OUTSIDE ACCESS DOOR
NEW STEEL SECURITY PANIC ROOM
CONNECTS TO FIRE EXIT ON UPPER LEVEL

PARKING AREAS →

OUTSIDE STAIRWELL
TO BASEMENT
NEW STEEL ARMED
SECURITY DOOR

PRIMARY ENTRANCE
TO FACILITY



Kevin M. DEARIS

HILLSIDE ENTERTAINMENT
1400 THIRTEENTH STREET RACINE, WI
— BASEMENT LEVEL DIAGRAM —
(NOT DRAWN TO SCALE)

EXHIBIT #4
LOCATION OF SECURE
LIQUOR STORAGE