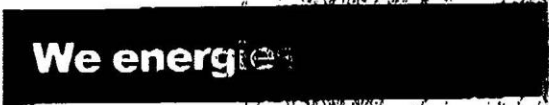


552-3223 Fax 552-3220



RECEIVED
NOV 13 2006
CITY ENGINEER

Fax

To:	City of Racine att; Darrel Beth	From:	Tom Schultz (262-552-3223)
Fax:	262-636-9545	Pages:	2+ Cover Page
Phone:	262-636-9192	Date:	11/13/2006
Re:	Street lighting estimate	CC:	

Urgent For Review Please Comment Please Reply Please Recycle

• **Comments:** This is the estimate you asked for in the Georgetown area. This cost is not approved and would have to be approved before I can finalize it. The cost was based on direction boring in the right of way and where I believe we have easements. Please let me know if you want to go ahead and I will check for easements and complete the engineering order. Please call with any questions. 262-552-3223

Thank you

Tom Schultz

Estimate only

NON-STANDARD LIGHTING SERVICE AGREEMENT

Appendix Date: November 13, 2006

Appendix Number: 2554216

This Appendix to a contract dated _____ between Wisconsin Electric Power Company (doing business as We Energies) and covers the installation of non-standard lighting as described below.

DROP DOWN Lighting for City of Racine
Located at Duchess Dr. / Princess Pl. / Sovereign Dr.

Light Fixtures

Quantity	Fixture	Color	Type	Wattage
4	Cobra-full cut-off	Standard	High Pressure Sodium	100 watt

Poles

Quantity	Type	Mounting Height	Color
4	Wood	30 foot	Natural

Additional Information

The installation charge of the listed lighting units is estimated to be \$32,361.28 which does include restoration. The basis of the monthly facilities charge under Rate Schedule MS-4 (W1), Non-Standard Street & Area Lighting, Company Owned is as follows:

- ___ **Option A** - No up front payment of installation charge. Monthly facilities charge is equal to 1.9% x installation charge.
0.019 x \$32,361.28 = \$614.86
- ___ **Option B** - Full payment of installation charge (\$32,361.28) up front. Monthly facilities charge is equal to 0.5% x installation charge less service and restoration charge. 0.005 x \$32,361.28 = \$161.80

The basis of the monthly energy charge under Rate Schedule MS-4 (W1), Non-Standard Street & Area Lighting is as follows:
4 (100 watt) fixtures * \$3.99 = \$15.96

Total monthly energy charge = \$15.96

The total monthly charge for this installation is:	<u>Option A</u>	<u>Option B</u>
Monthly facilities charge	\$614.86	\$161.80
Monthly energy charge	<u>\$15.96</u>	<u>\$15.96</u>
Total monthly charge	\$630.82	\$177.76

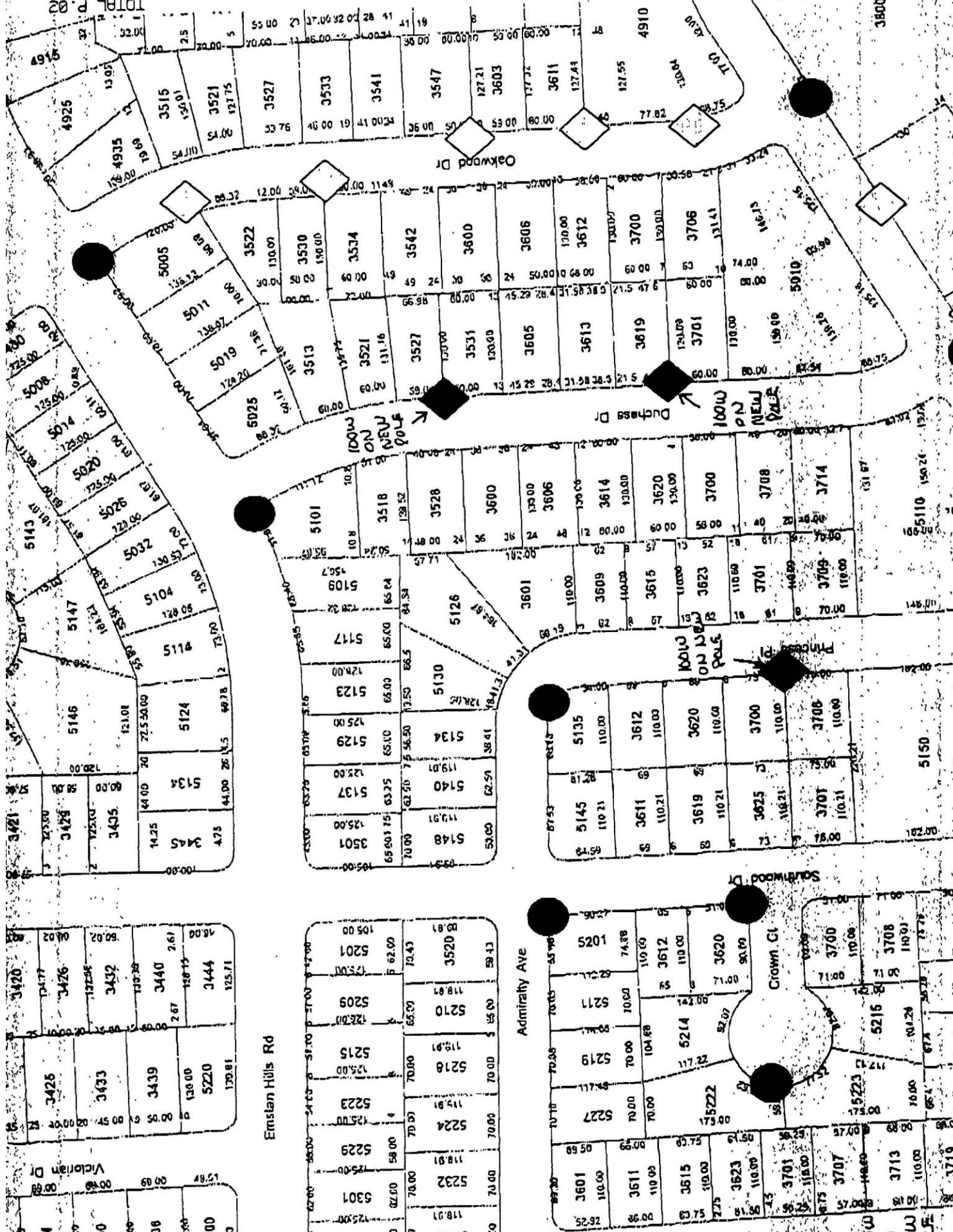
Please note that We Energies has not designed this installation to the Illuminating Engineering Society's minimum standard for continuous roadway lighting levels.

IN WITNESS WHEREOF, the parties have caused this Agreement to be executed by their duly authorized representatives as of the Appendix date above.

Wisconsin Electric Power Company

By _____
Print Name _____
Title _____

By _____
Print Name _____
Title _____



TOTAL P.02

NOV-13-2002 12:11

WE ENERGIES

02725 2002 292

