

October 13, 2010

Common Council

730 Washington Ave

Racine Wi

Re: Installation of awning

Sausage Kitchen

1706 Rapids Drive

We are installing an awning on the front of our building at 1706 Rapids Drive. It will extend over the sidewalk approximately 3 feet. It is my understanding we will need permission to complete this. The work will be done by Foreman Awning. They will fabricate and install (2) fixed frame traditional style awnings on the south side of the building, over the entrances.

We also have a sign on the front of the building which has been there since 1975. We will be only replacing the face of the sign, not the sign itself. That too extends over the sidewalk.

Please let us know when we can apply for a permit for the awnings.

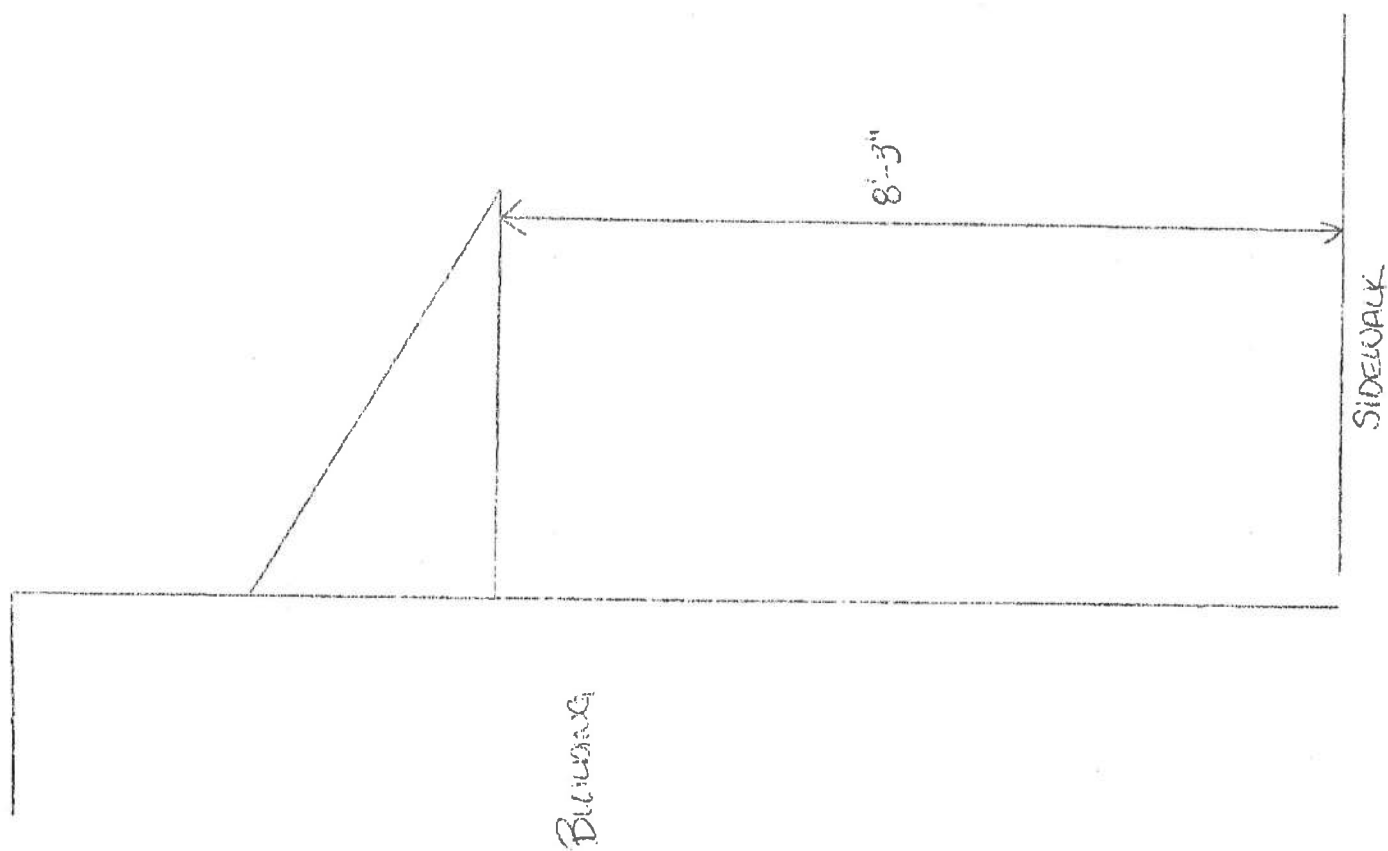
Thank you,

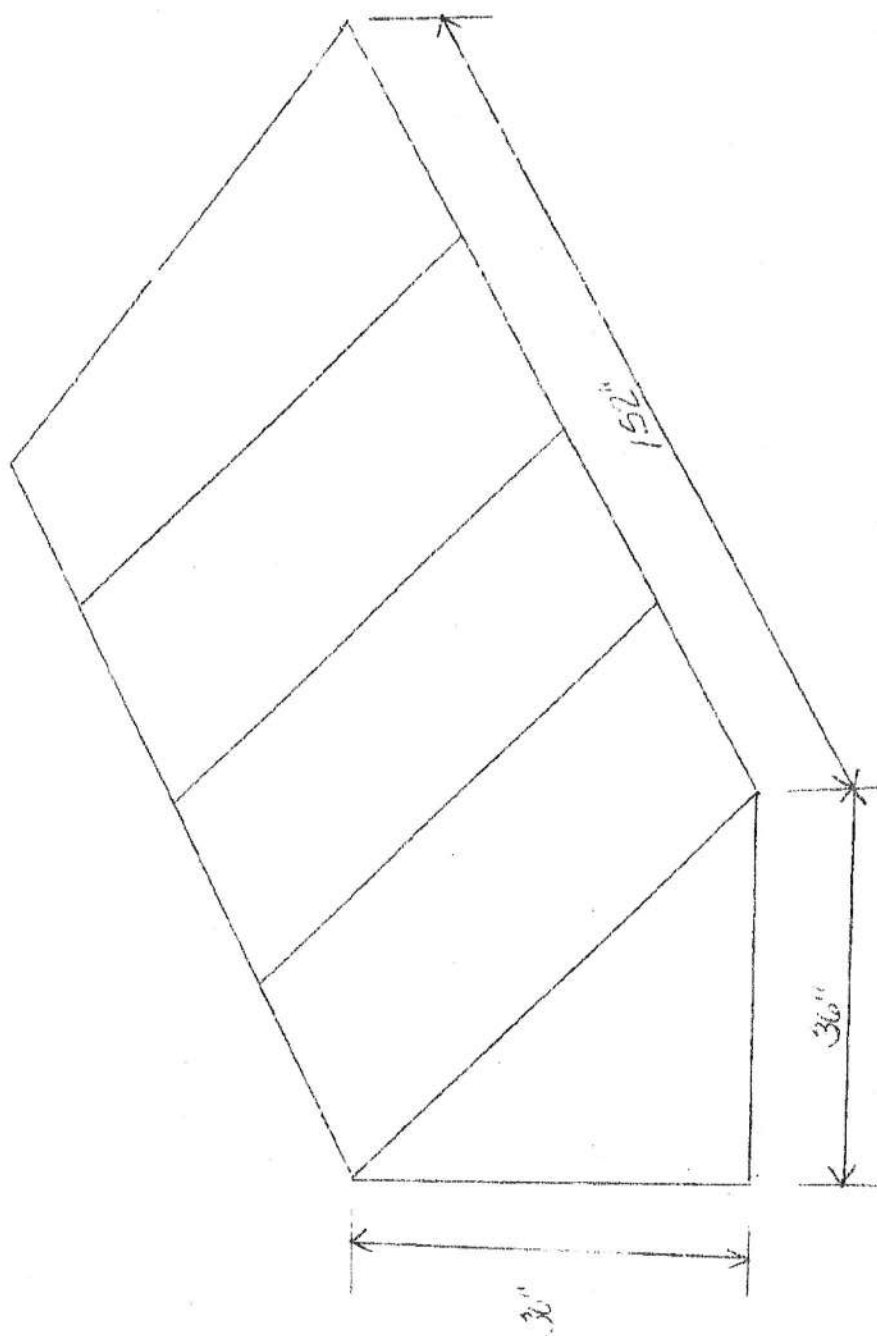
Pat Miller

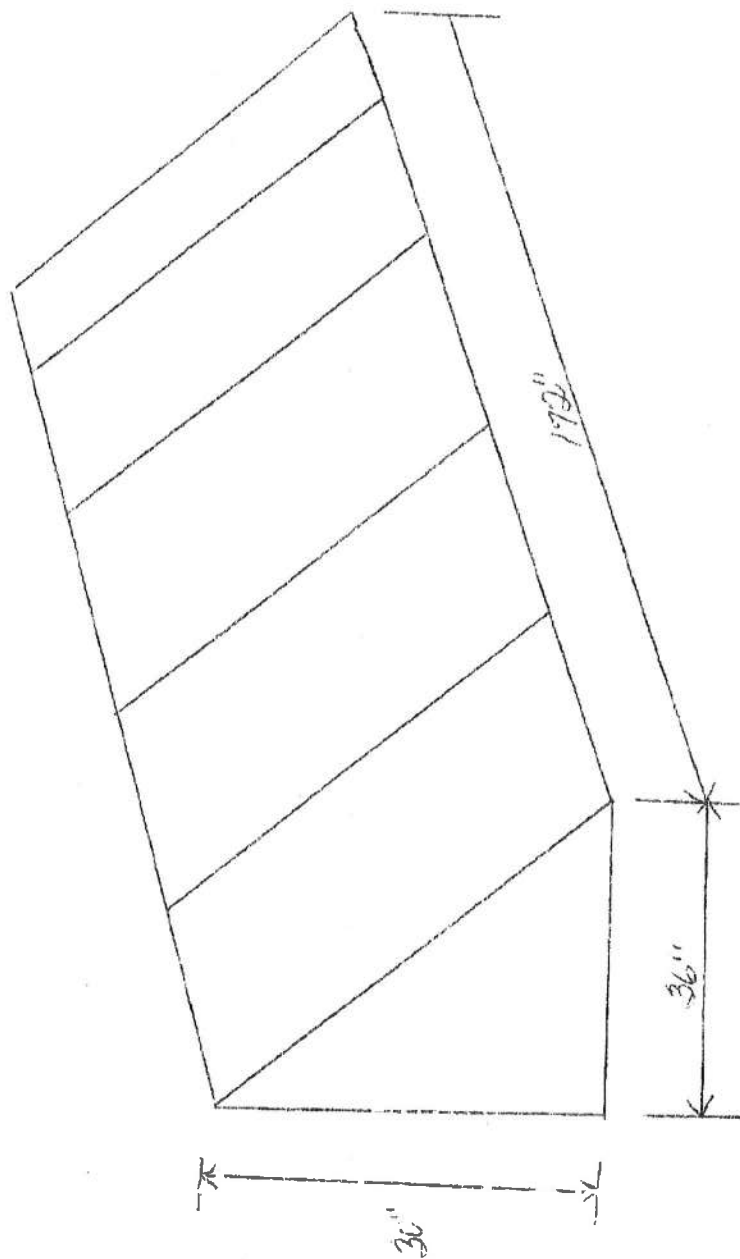


Sausage Kitchen

262-634-8353







THERE WILL BE A CUT
MADE FOR THE BEAM
PENETRATING OUT OF THE
BUILDING

Sunbrella Marine Fabric specifications

Sunbrella marine Fabric is water and mildew resistant, and well suited for awnings, boat tops, covers, curtains, sail bags, and other marine uses. Backed by a manufacturer's ten-year limited warranty.

Fabric: Solution-Dyed Woven Acrylic

Finish: Fluorocarbon

Width: 60 inches

Weight: 9.25 oz. per sq. yd.

Warranty

This limited warranty protects the original purchaser should Sunbrella fabric become unserviceable due to color or strength loss from normal usage and exposure conditions, including sunlight, mildew and atmospheric chemicals.

The limited warranty coverage period is ten years from the date of original installation.

This limited warranty covers Sunbrella Awning fabric and Sunbrella marine fabric only. This limited warranty is valid with proof of purchase from the original purchaser. This limited warranty does not cover normal fabric care and cleaning; damage from misuse, abuser, or improper installation. Glen Raven's liability is expressly limited to this warranty. Glen Raven reserves the right to inspect the fabric submitted for claim.

Glen Raven will supply new equivalent fabric to replace the fabric that becomes unserviceable. In the first eight years of the warranty period, Glen Raven will provide replacement fabric to the purchaser at no cost. During the ninth year, Glen Raven will provide replacement fabric to the purchaser at the then-current selling price, less a 30% discount. During the tenth year, Glen Raven will provide replacement fabric to the purchaser at the then-current selling price, less a 15% discount. Replacement fabric is warranted under the remaining term of the original warranty.

1" Galvanized steel square "GatorStitch" specifications

From the makers of Gatorshield mechanical steel tubing and Steel Stitch aluminum staple-in systems comes a revolutionary product that combines the benefits of these two mainstays in one. GatorStitch is a superior strength frame tubing product that incorporates an aluminum stapling web embedded within a 1" galvanized steel tube. Like the Steel Stitch system, fabric is stapled into a channel of the GatorStitch frame, resulting in an attractive, seamless and wrinkle-free, drum-tight awning or sign.

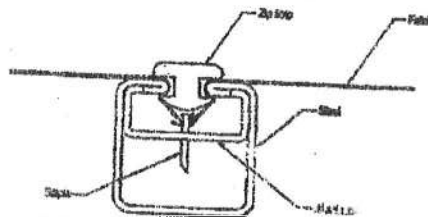
Use the Steel Stitch product like you would the aluminum framing system with the same tools, pvc trim, and covering techniques. Save \$\$\$ on your material cost due to the superior strength and lower cost of steel. GatorStitch is fabricator-friendly and works with any awning or flex-face sign fabric, including woven acrylics, laminated and coated vinyls, polyester blends, and open mesh weaves. Fabric wear is reduced because of the systems fabric-to-frame attachment points. GatorStitch is 1" square and made of 18 gauge high strength steel having a maximum yield strength of 50,000 psi and tensile strength of 55,000 psi. Weld to existing steel for retrofits or large structures. Meet project specifications that call for steel framing.

GatorStitch Corrosion Protection

A triple layer of zinc, conversion coating, and clear epoxy protects the inside and outside surfaces of the steel and act as a barrier between the steel and the aluminum insert.

Specifications (20 ft. lengths)

Item No.	Shape	Size (I.D.)	Gauge	Lbs. Per Ft.	Pieces Per Coil	Ft. Per Coil	Wt. Per Coil (lbs)	Approx. Wt. Per Sq. Ft.
278150	Square	1"	18	0.6891	60	1200	833	13.6



Gatorshield® is a registered trademark of Allied Tube & Conduit Corporation.

Method of Installation:

Both traditional style awnings will be mounted directly onto the brick using $2\frac{3}{4}" \times \frac{1}{4}"$ tapeons with Z-Brackets. Awnings will also be caulked at the top to prevent water seeping behind the awning.