



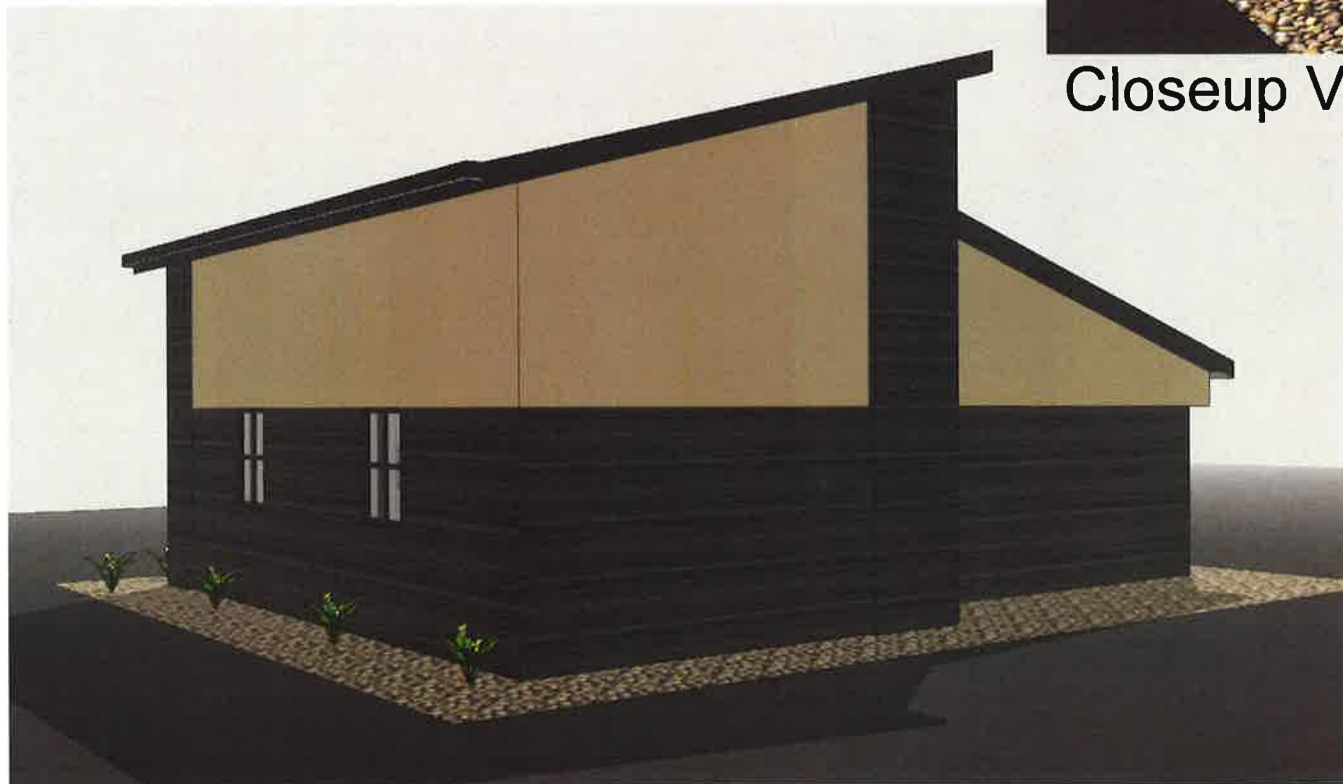
View Looking NW



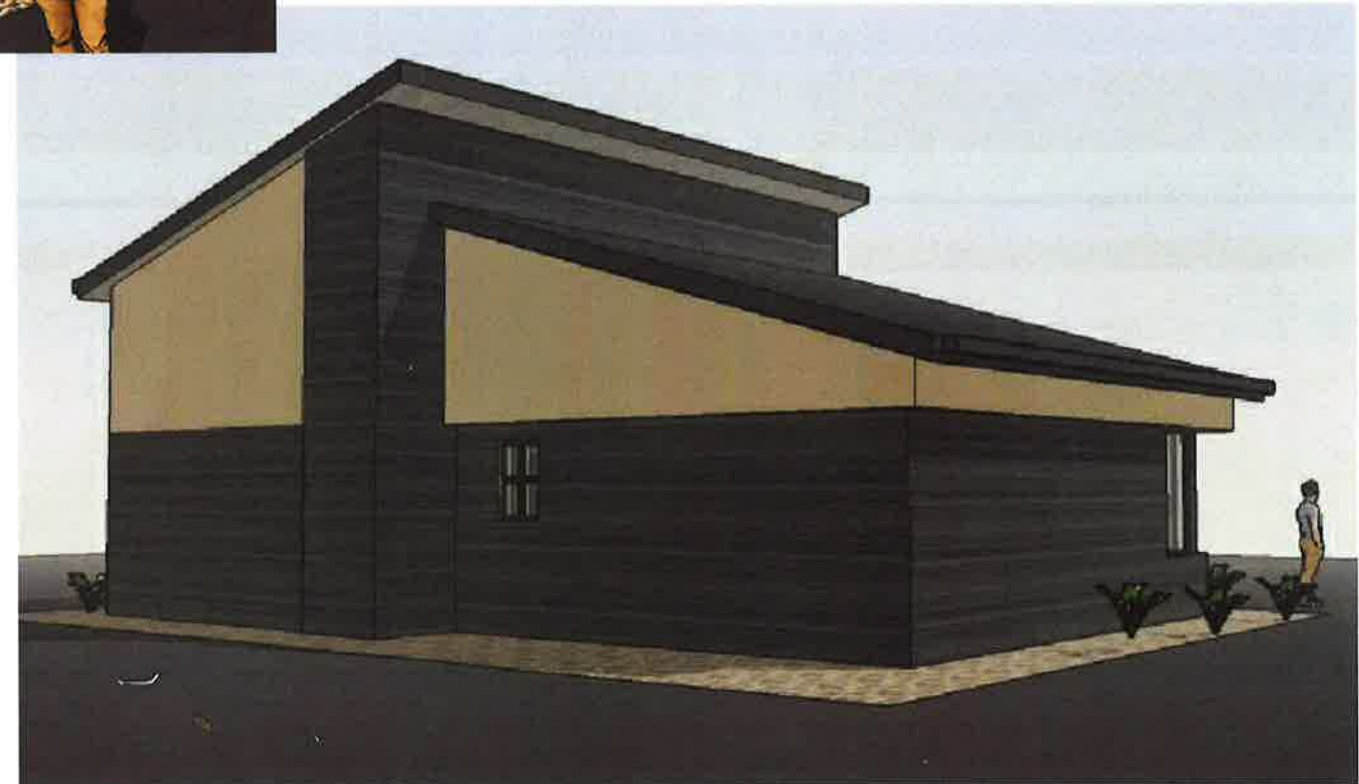
View Looking SW



Closeup View



View Looking SE



View Looking NE

Mark	Date	Description
0	6/25/19	Landscape Revision

WILLIAM FELDMAN, RA
 ARCHITECT
 7820 N. BOYD WAY
 MILWAUKEE, WI 53217
 PH 414.861.1284
 WFELDMAN5@GMAIL.COM

Auto Sales Office
2300 Douglas Ave
 Racine, WI

DRAWN BY: WF
 CHECKED BY: WF
 DATE: 4-30-19
 JOB NUMBER: 19002

Proposed Building
 Renderings