

September 11, 2024

Mr. Nate Tillis—Wastewater Utility Director
Racine Wastewater Utility
800 Center Street, Room 227
Racine, WI 53403

Re: Request for Approval of Sanitary Sewer Extension
Braun Road Sewer Extension
Village of Mount Pleasant

**SEWER UTILITY
DISTRICT NO.1**

8811 Campus Drive
Mount Pleasant, WI 53406

T: 262.664.7800
F: 262.664.7801
info@mtpleasantwi.gov
www.mtpleasantwi.gov

Police Non-Emergency
T: 262.884.0454

South Shore Fire Dept.
Non-Emergency
T: 262.554.8812

Dear Mr. Tillis,

The Mount Pleasant Sewer Utility has reviewed and approved the plans for the Braun Road Sewer Extension, a proposed sewer extension in the Village of Mount Pleasant, prepared by Kapur & Associates, dated 4-18-2024.

The extension in question includes approximately 2,690 L.F. of 12" and 15" diameter sanitary sewer and will initially serve a 60-acre multi-family development on the north side of Braun Road in Mount Pleasant. The sewer is being sized to accommodate an approx. 270 acre sewer service area north and south of Braun Road, bounded on the west by the Pike River and on the east by STH 31. The ultimate daily flow expected from this extension is approximately 1.03 MGD. This extension will drain by gravity into the Mount Pleasant interceptor system, which is directly tributary to the Racine Wastewater Treatment Plant. Mount Pleasant's currently available average daily flow capacity at the plant is approximately 5.11 MGD, which is more than adequate to handle the anticipated flow from this extension.

Per Exhibit F1(a) of the Sewer Agreement, Mount Pleasant is allotted 74.679 MGD (peak hourly flow) at the Bryn Mawr meter point, to which the subject sewer extension is tributary to. Historic peak flows at this metering point during extreme rain events are in the range of 25-30 MGD. The subject sewer extension is calculated to have an ultimate peak flow of 4.12 MGD (peaking factor 4), which is well within the existing capacity constraints at the Bryn Mawr metering point.

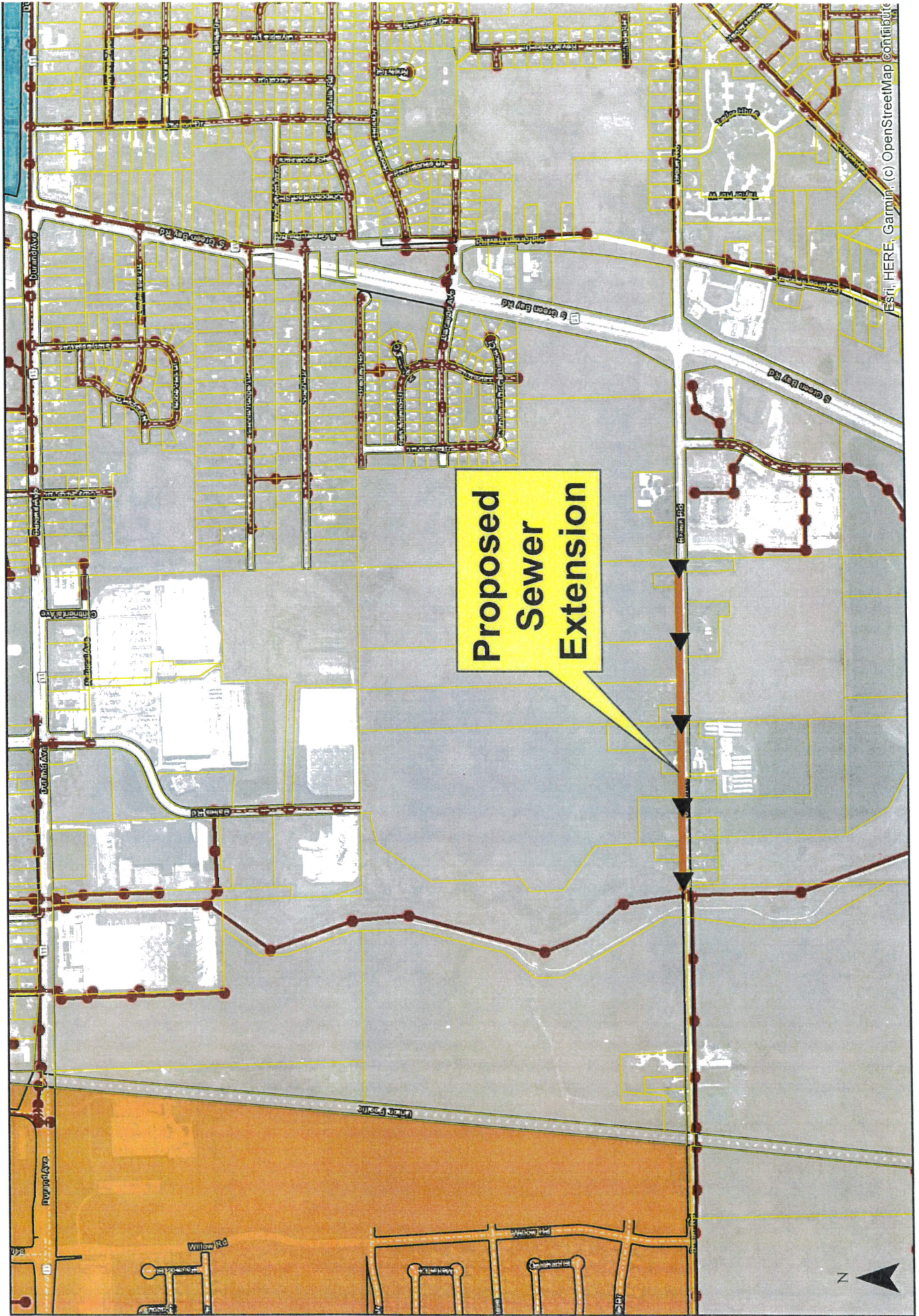
The approximate location of the extension is shown on the attached exhibit.

We politely request that the Racine Wastewater Commission approve the aforementioned extension.

Sincerely,
Mount Pleasant Sewer Utility District #1


Anthony J. Beyer, P.E.
Director of Public Works/Village Engineer

Encl. as Noted



**Proposed
Sewer
Extension**



1 inch = 1,000 feet