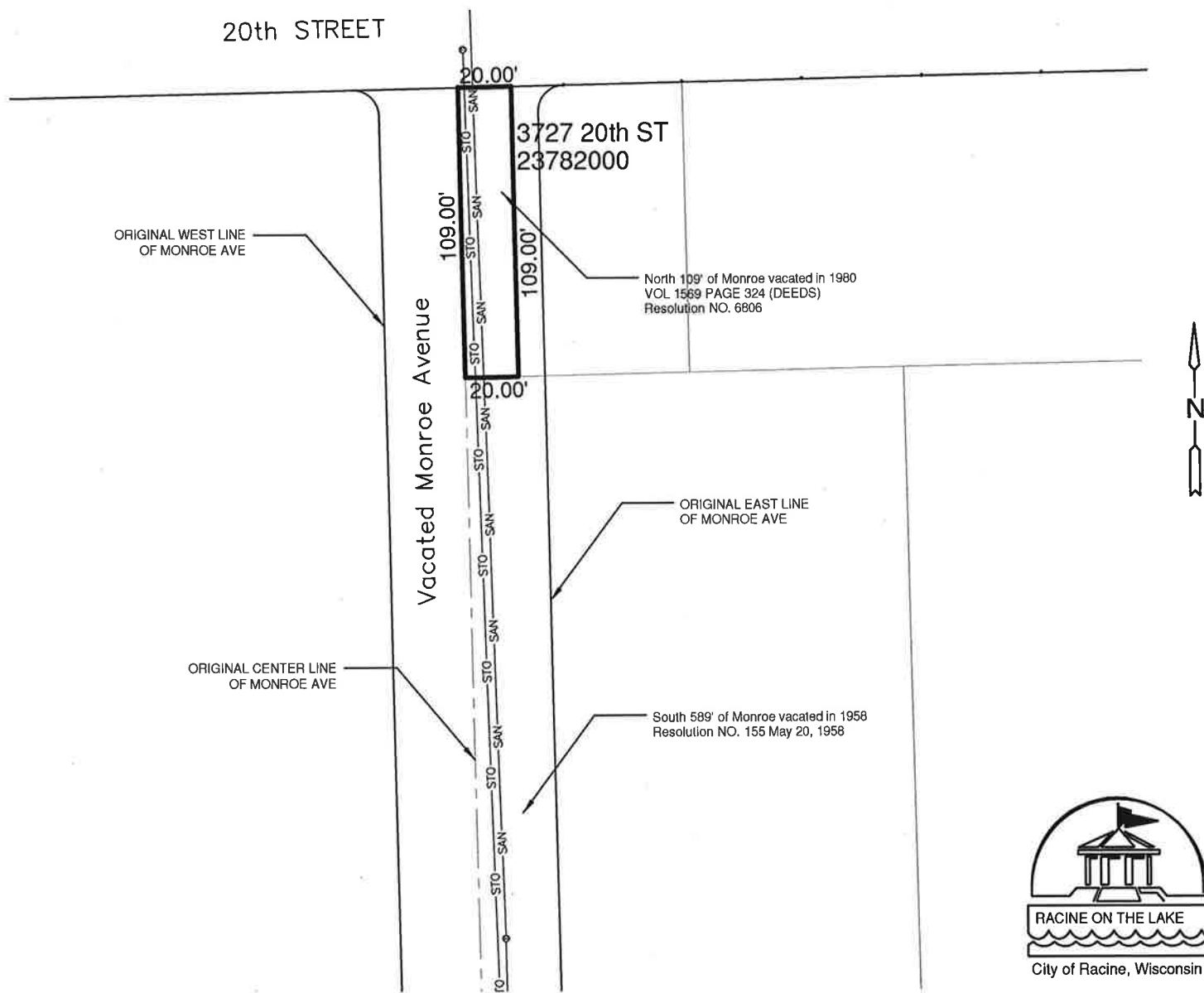


SEWER EASEMENT

That part of Walker Addition, a recorded plat in the City of Racine, Racine County, Wisconsin that is part of the Northeast 1/4 of Section 19 Township 3 North, Range 23 East described as follows:

A 20 foot wide sewer easement east of the original center line of vacated Monroe Avenue and 109 feet south of the south line of 20th Street to the south line of 20th Street. Said described tract containing 2,180 square feet more-or-less.



CITY ENGINEER'S OFFICE RACINE, WISCONSIN

DOCUMENT NUMBER : X	REVISIONS : X	REVISIONS : X
APPROVED : J.C.R. DATE : X	DRAWN : T.J.J. DATE : 07/26/13	Scale : 1"=60'
RESOLUTION NO : X	(NE 1/4 SEC 19 T3N R23E) U-07	
Parcel Identification Number : 23782000	CODE : X	FILE NUMBER : EP-397