

PROJECT ID: 2703-00-74
WITH: PROJECTIDA

COUNTY: RACINE

RACINE COUNTY
DEPARTMENT OF PUBLIC WORKS
PLAN OF PROPOSED IMPROVEMENT

16TH STREET
STH 32 TO MAIN STREET
LOCAL STREET
RACINE COUNTY

STATE PROJECT NUMBER
2703-00-24

R/W PROJECT NUMBER	SHEET NUMBER	TOTAL SHEETS
2703-00-24	4.01	10
PLAT OF RIGHT OF WAY REQUIRED FOR 16TH STREET STH 32 TO MAIN STREET		
16TH ST.	RACINE COUNTY	
CONST. PROJECT NO. 2703-00-74		

CONVENTIONAL SYMBOLS

SECTION LINE	--- ---	SECTION CORNER SYMBOL	⊕	R/W MONUMENT (TO BE SET)	●
QUARTER LINE	--- ---	SECTION CORNER MONUMENT	⊕	NON-MONUMENTED R/W POINT	○
SIXTEENTH LINE	--- ---	GEODETIC SURVEY MONUMENT	⊕	FOUND IRON PIN (1-INCH UNLESS NOTED)	IP
NEW REFERENCE LINE	--- ---	SIXTEENTH CORNER MONUMENT	⊕	OFF-PREMISE SIGN	Ⓜ
NEW R/W LINE	--- ---	SIGN	Ⓜ	COMPENSABLE	Ⓜ
EXISTING R/W OR HE LINE	--- ---	OFF-PREMISE SIGN	Ⓜ	NON-COMPENSABLE	Ⓜ
PROPERTY LINE	--- ---	PARALLEL OFFSETS	Ⓜ		
LOT, TIE & OTHER MINOR LINES	--- ---				
SLOPE INTERCEPT	--- ---				
CORPORATE LIMITS	--- ---				
UNDERGROUND FACILITY (COMMUNICATIONS, ELECTRIC, ETC)	--- ---				
NEW R/W (FEE OR HE) (HATCHING VARIES BY OWNER)	--- ---				
TEMPORARY LIMITED EASEMENT AREA	--- ---				
EASEMENT AREA (PERMANENT LIMITED OR RESTRICTED DEVELOPMENT)	--- ---				
TRANSMISSION STRUCTURES	--- ---				
BUILDING TO BE REMOVED	--- ---				
BRIDGE	--- ---				

CONVENTIONAL ABBREVIATIONS

ACCESS RIGHTS	AR	POINT OF INTERSECTION	PI
ACRES	AC	PROPERTY LINE	PL
AHEAD	AH	RECORDED AS	(100')
ALUMINUM	ALUM	REEL / IMAGE	R/I
AND OTHERS	ET AL	REFERENCE LINE	R/L
BACK	BK	REMAINING	REM
BLOCK	BLK	RESTRICTIVE DEVELOPMENT EASEMENT	RDE
CENTERLINE	C/L	RIGHT	RT
CERTIFIED SURVEY MAP	CSM	RIGHT OF WAY	R/W
CONCRETE	CONC	SECTION	SEC
COUNTY	CO	SEPTIC VENT	SEP
COUNTY TRUNK HIGHWAY	CTH	SQUARE FEET	SF
DISTANCE	DIST	STATE TRUNK HIGHWAY	STH
CORNER	COR	STATION	STA
DOCUMENT NUMBER	DOC	TELEPHONE PEDESTAL	TP
EASEMENT	EASE	TEMPORARY LIMITED EASEMENT	TLE
EXISTING	EX	TRANSPORTATION PROJECT PLAT	TPP
GAS VALVE	GV	UNITED STATES HIGHWAY	USH
GRID NORTH	GN	VOLUME	V
HIGHWAY EASEMENT	HE		
IDENTIFICATION	ID		
LAND CONTRACT	LC		
LEFT	LT		
MONUMENT	MON		
NATIONAL GEODETIC SURVEY	NGS		
NUMBER	NO		
OUTLOT	OL		
PAGE	P		
POINT OF TANGENCY	PT		
PERMANENT LIMITED EASEMENT	PLE		
POINT OF BEGINNING	POB		
POINT OF CURVATURE	PC		
POINT OF COMPOUND CURVE	PCC		

CURVE DATA

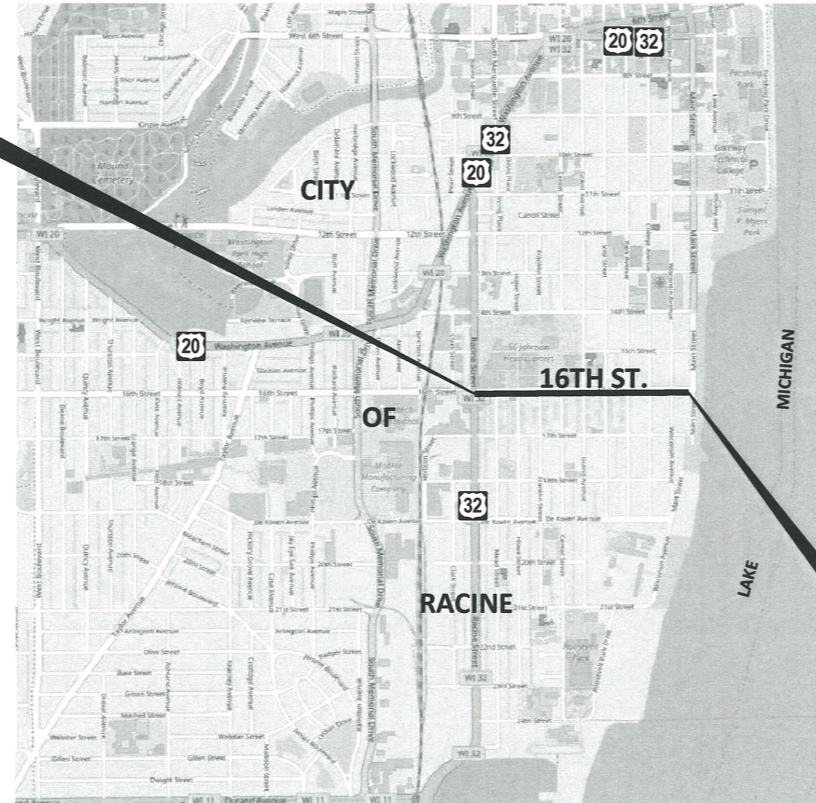
LONG CHORD	LCH
LONG CHORD BEARING	LCB
RADIUS	R
DEGREE OF CURVE	D
CENTRAL ANGLE	Δ/DELTA
LENGTH OF CURVE	L
TANGENT	T
DIRECTION AHEAD	DA
DIRECTION BACK	DB

CONVENTIONAL UTILITY SYMBOLS

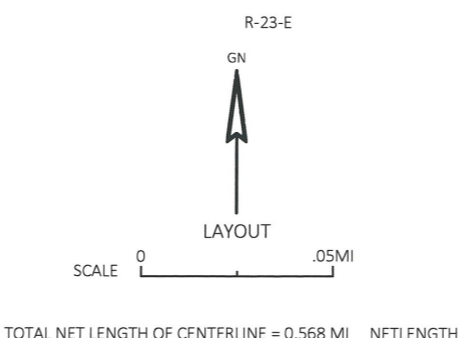
---	WATER
---	GAS
---	TELEPHONE
---	OVERHEAD
---	TRANSMISSION LINES
---	ELECTRIC
---	CABLE TELEVISION
---	FIBER OPTIC
---	SANITARY SEWER
---	STORM SEWER

BEGIN RELOCATION ORDER
STA. 11+35.38
340.92' NORTH AND 1850.98' WEST OF THE SE CORNER OF SW 1/4 OF 16, T3N, R23 E

CAUTION
THIS PLAT IS FOR ILLUSTRATIVE PURPOSES ONLY. DEEDS MUST BE CHECKED TO DETERMINE PROPERTY BOUNDARIES.



END RELOCATION ORDER
STA. 41+36.34
347.70" NORTH AND 1149.97' EAST OF THE SE CORNER OF THE SW 1/4 OF 16, T3N, R23E



NOTES:
RIGHT OF WAY MONUMENTS ARE TYPE 2 AND ARE PLACED PRIOR TO OR AT THE COMPLETION OF THE PROJECT.
RIGHT OF WAY BOUNDARIES ARE DEFINED WITH COURSES OF THE PERIMETER OF THE HIGHWAY LANDS REFERENCED TO THE U.S. PUBLIC LAND SURVEY OR OTHER SURVEYS OF PUBLIC RECORD.
PROPERTY LINES SHOWN ON THIS PLAT ARE DRAWN FROM DATA DERIVED FROM MAPS AND DOCUMENTS OF PUBLIC RECORD AND/OR EXISTING OCCUPATIONAL LINES. THIS PLAT MY NOT BE A TRUE REPRESENTATION OF EXISTING PROPERTY LINES, EXCLUDING RIGHT -OF-WAY LINES, AND SHOULD NOT BE USED AS A SUBSTITUTE FOR AN ACCURATE FIELD SURVEY.

A TEMPORARY LIMITED EASEMENT IS A RIGHT FOR CONSTRUCTION AND MAINTENANCE PURPOSES, AS DEFINED HEREIN, INCLUDING THE RIGHT TO OPERATE NECESSARY EQUIPMENT THEREON AND THE RIGHT OF INGRESS AND EGRESS AS LONG AS REQUIRED FOR SUCH PUBLIC PURPOSE, INCLUDING THE RIGHT TO PRESERVE, PROTECT, REMOVE, OR PLANT THEREON ANY VEGETATION THAT THE HIGHWAY AUTHORITIES MAY DEEM NECESSARY OR DESIRABLE. ALL TLES EXPIRE AT THE COMPLETION OF THE CONSTRUCTION PROJECT FOR WHICH THIS INSTRUMENT IS GIVEN.



ACCEPTED FOR
CITY _____ of _____ RACINE

(Date) (Signature & Title of Official)

ORIGINAL PLANS PREPARED BY
GRÄEF 125 S. 84TH STREET, SUITE 401
MILWAUKEE, WI 53214



3/18/19 (Date) *[Signature]* (Signature)

SCHEDULE OF LANDS & INTERESTS REQUIRED

OWNER'S NAMES ARE SHOWN FOR REFERENCE
PURPOSED ONLY AND ARE SUBJECT TO CHANGE
PRIOR TO THE TRANSFER OF LAND INTERESTS
TO WASHINGTON COUNTY.

* DENOTES AREAS COMPUTED

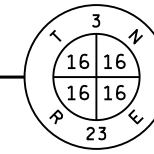
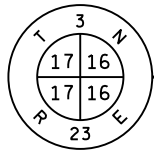
AREAS SHOWN IN THE TOTAL ACRES COLUMN MAY BE APPROXIMATE
AND ARE DERIVED FROM TAX ROLLS OR OTHER AVAILABLE SOURCES
AND MAY NOT INCLUDE LANDS OF THE OWNER WHICH ARE NOT
CONTIGUOUS TO THE AREA TO BE ACQUIRED.

4

4

PARCEL NUMBER	SHEET NUMBER	OWNER	INTEREST REQUIRED	TOTAL ACRES	NEW	EXISTING	TOTAL	REMAINING ACRES	TLE SQ. FT.	PERM. ACRES	PARCEL NUMBER
1	4.06, 4.07, 4.08	S.C. Johnson & Son, Inc.	TLE	34.120	0.000	0.000	0.000	34.120	6962	0.000	1
2	4.06	S.C. Johnson & Son, Inc.	TLE	0.593	0.000	0.000	0.000	0.593	525	0.000	2
3	4.06	S.C. Johnson & Son, Inc.	TLE	0.493	0.000	0.000	0.000	0.493	200	0.000	3
4	4.07	S.C. Johnson & Son, Inc.	TLE	0.766	0.000	0.000	0.000	0.766	235	0.000	4
5	4.07	S.C. Johnson & Son, Inc.	TLE	0.567	0.000	0.000	0.000	0.567	332	0.000	5
6	4.07	Johnson Redevelopment, Corp.	TLE	0.047	0.000	0.000	0.000	0.047	130	0.000	6
7	4.08	S.C. Johnson & Son, Inc.	TLE	0.395	0.000	0.000	0.000	0.395	88	0.000	7
8	4.08	S.C. Johnson Wax, Inc.	TLE	0.083	0.000	0.000	0.000	0.083	76	0.000	8
9	4.08	Hazzie L. Powell Living Trust	TLE	0.139	0.000	0.000	0.000	0.139	393	0.000	9
10	4.08	Retta Locke	TLE	0.145	0.000	0.000	0.000	0.145	305	0.000	10
11	4.08	Pamala L. Handrow	TLE	0.130	0.000	0.000	0.000	0.130	182	0.000	11
12	4.08	Kevin T. Bradley & Jerilyn A. Bradley	TLE	0.087	0.000	0.000	0.000	0.087	91	0.000	12
13	4.08	ACM Vision V, LLC	TLE	0.072	0.000	0.000	0.000	0.072	192	0.000	13
14	4.08	John W. Rogowski	TLE	0.073	0.000	0.000	0.000	0.073	482	0.000	14
15	4.09	Alquds Investments, LLC	TLE	0.212	0.000	0.000	0.000	0.212	226	0.000	15
16	4.09	JT4 Investments, LLC	TLE	0.110	0.000	0.000	0.000	0.110	151	0.000	16
17	4.09	J & N Assets III, LLC	TLE	0.170	0.000	0.000	0.000	0.170	75	0.000	17
18	4.09	Alquds Investments, LLC	TLE	0.057	0.000	0.000	0.000	0.057	342	0.000	18
19	4.09	Tracy B. Lane	TLE	0.053	0.000	0.000	0.000	0.053	384	0.000	19
20	4.09	Tony D. Shoup and Lynann Shoup	TLE	0.064	0.000	0.000	0.000	0.064	175	0.000	20
21	4.09	Brain E. Walton and Peggy A. James	TLE	0.078	0.000	0.000	0.000	0.078	450	0.000	21
22	4.09	Paige C. Borchart and Janice R. Borchart	TLE	0.168	0.000	0.000	0.000	0.168	75	0.000	22
23	4.09	John R. Hemans and Glorianna J. Hemans	TLE	0.194	0.000	0.000	0.000	0.194	80	0.000	23
24	4.09	Alice R. Thomson	TLE	0.289	0.000	0.000	0.000	0.289	520	0.000	24
25	4.09	Charles N. Angus and Barbara L. Angus	TLE	0.135	0.000	0.000	0.000	0.135	611	0.000	25
26	4.09	Brian Patrick Mc Nulty and Kathleen Fenno Mc Nulty	TLE	0.155	0.000	0.000	0.000	0.155	328	0.000	26
27	4.10	Women's Resource Center of Racine, Inc.	TLE	0.225	0.000	0.000	0.000	0.225	125	0.000	27
28	4.10	The Beverly A. and Donald J. Schumacher Revocable Trust	TLE	0.225	0.000	0.000	0.000	0.225	615	0.000	28
29	4.10	Kurt S. Wahlen and Jan S. Wahlen	TLE	0.227	0.000	0.000	0.000	0.227	355	0.000	29
30	4.10	Janet S. Wefler	TLE	0.065	0.000	0.000	0.000	0.065	227	0.000	30
31	4.10	James A. Schatzman and Jane Marie Schatzman	TLE	0.072	0.000	0.000	0.000	0.072	183	0.000	31
32	4.10	Deborah K. Wiltsey	TLE	0.072	0.000	0.000	0.000	0.072	205	0.000	32
33	4.10	David W. Cozzens and Molly Ortwein	TLE	0.338	0.000	0.000	0.000	0.781	165	0.000	33
34	4.10	Joan C. Rotkis and Matthew J. Rotkis	TLE	0.113	0.000	0.000	0.000	0.113	507	0.000	34
35	4.10	James Michael Eisel and Deborah Eisel	TLE	0.225	0.000	0.000	0.000	0.225	128	0.000	35
36	4.10	Iain Boyd	TLE	0.338	0.000	0.000	0.000	0.338	75	0.000	36

REVISION DATE	DATE 03/18/19	SCALE, FEET	HWY: 16TH STREET	STATE R/W PROJECT NUMBER 2703-00-24	PLAT SHEET 4.02
GRID FACTOR			COUNTY: RACINE	CONSTRUCTION PROJECT NUMBER 2703-00-74	PS&E SHEET E



CITY

SW-SW
OF SEC. 16

SE-SW
OF SEC. 16

OF

①

S.C. JOHNSON
& SON, INC

②

S.C. JOHNSON
& SON, INC

③

S.C. JOHNSON
& SON, INC

④

S.C. JOHNSON
& SON, INC

⑤

S.C. JOHNSON
& SON, INC

⑥

S.C. JOHNSON
& SON, INC

RACINE

BEGIN RELOCATION
ORDER

STA. 11+35.38

Y= 180,725.71

X= 637,096.14

AVENUE

RACINE

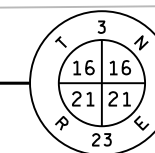
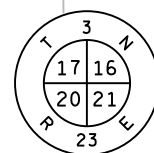
16TH

STREET

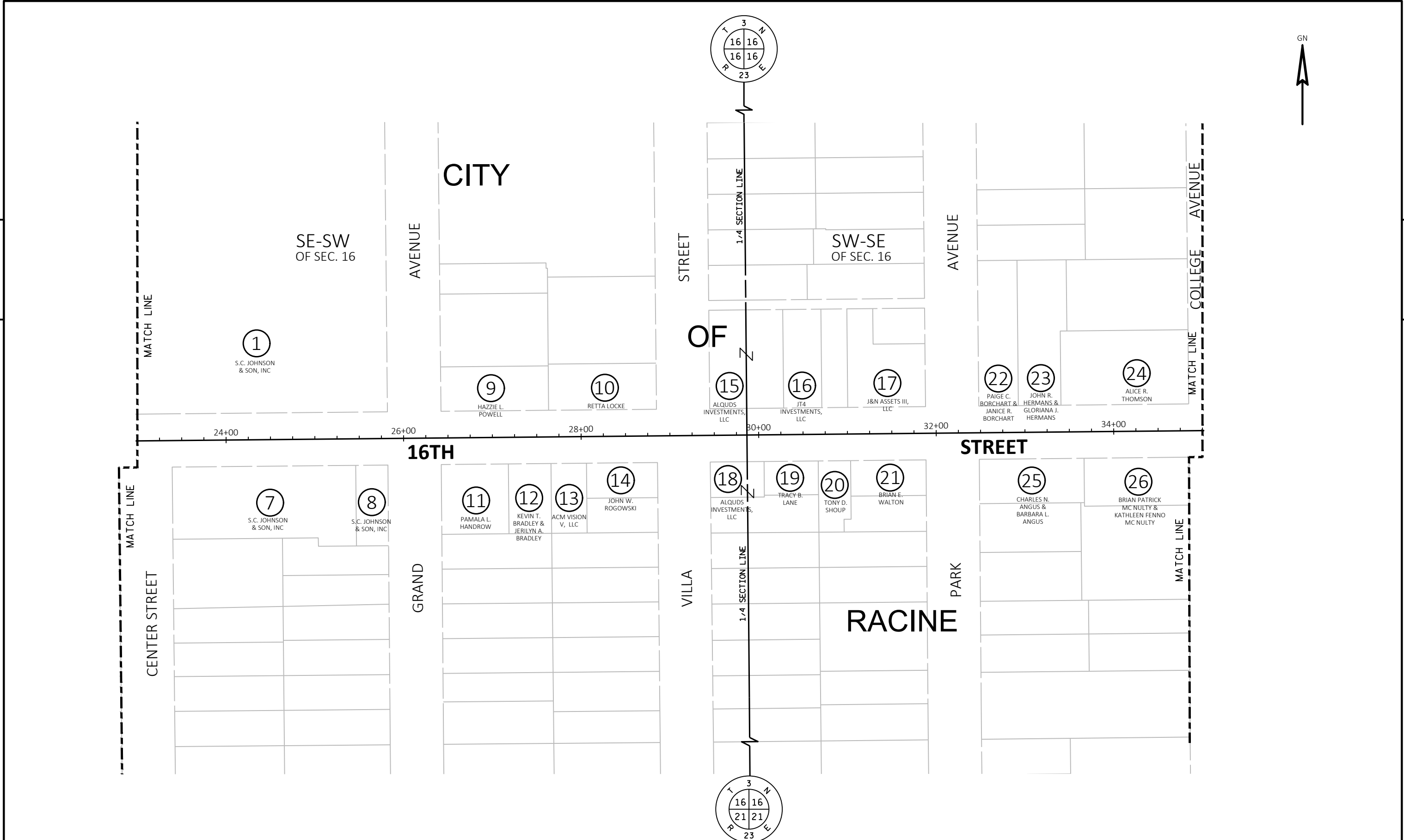
MEAD STREET

HOWE STREET

FRANKLIN STREET



REVISION DATE	DATE 03/18/19	SCALE, FEET 0 50 100	HWY: 16TH STREET	STATE R/W PROJECT NUMBER 2703-00-24	PLAT SHEET 4.03
	GRID FACTOR		COUNTY: RACINE	CONSTRUCTION PROJECT NUMBER 2703-00-74	PS&E SHEET

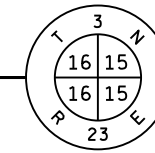
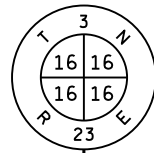


4

4

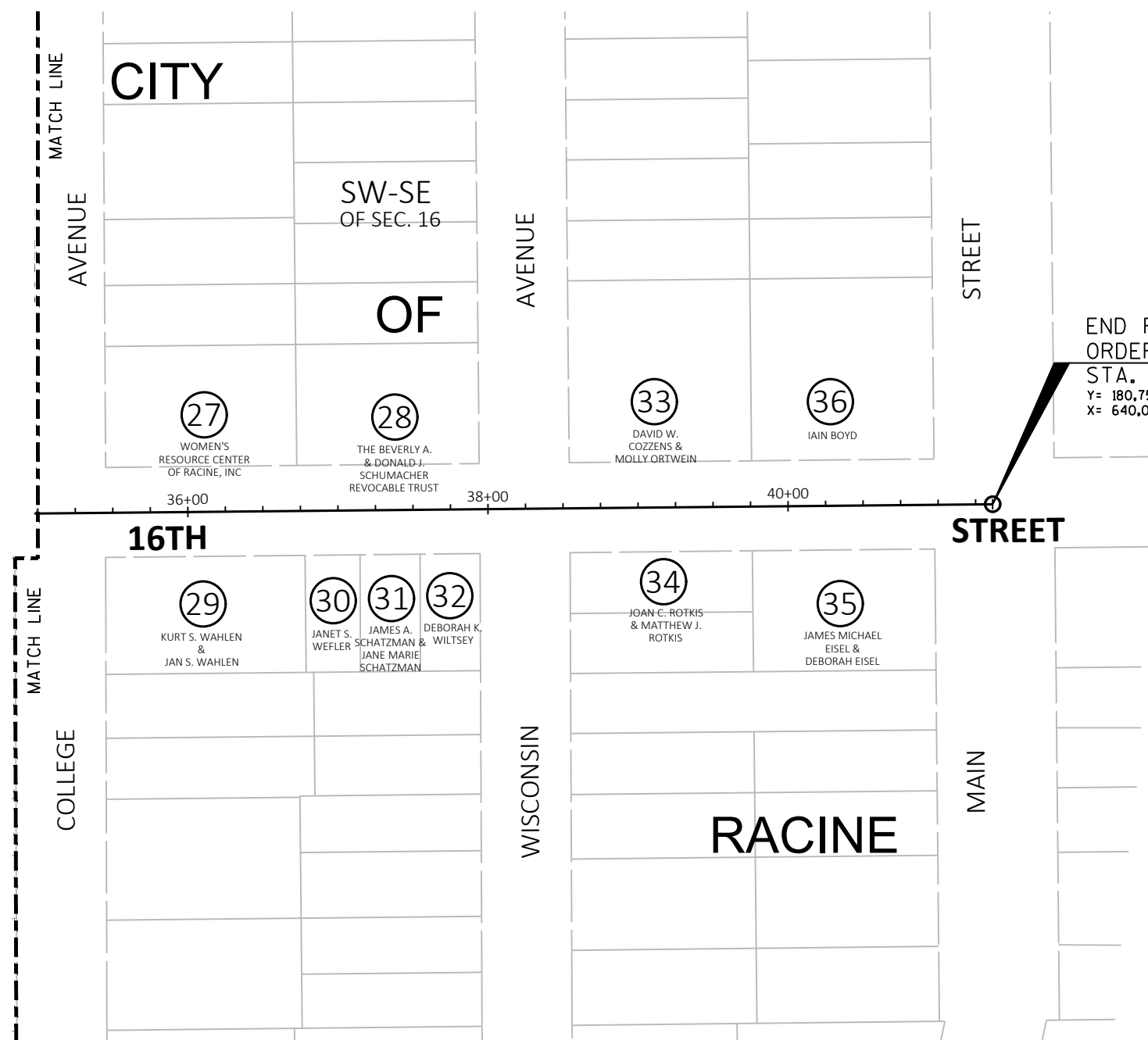
REVISION DATE	DATE 03/18/19	SCALE, FEET 0 50 100	HWY: 16TH STREET	STATE R/W PROJECT NUMBER 2703-00-24	PLAT SHEET 4.04
	GRID FACTOR		COUNTY: RACINE	CONSTRUCTION PROJECT NUMBER 2703-00-74	PS&E SHEET

E



4

4



END RELOCATION ORDER
 STA. 41+36.34
 Y= 180,754.63
 X= 640,096.96

REVISION DATE	DATE 03/18/19	SCALE, FEET 0 50 100	HWY: 16TH STREET	STATE R/W PROJECT NUMBER 2703-00-24	PLAT SHEET 4.05
GRID FACTOR			COUNTY: RACINE	CONSTRUCTION PROJECT NUMBER 2703-00-74	PS&E SHEET

COURSE TABLE
PARCEL 1

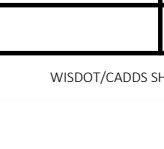
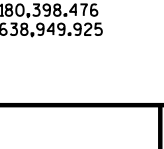
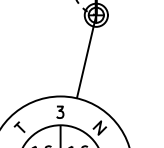
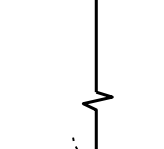
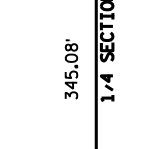
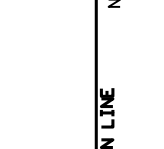
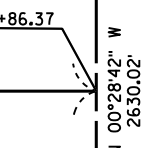
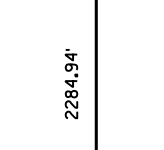
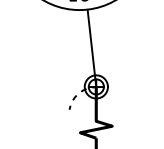
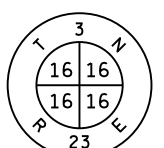
FROM POINT TO POINT	BEARING	DISTANCE
103 to 100	S 89° 26' 13" W	85.00'
100 to 101	N 00° 33' 49" W	10.00'
101 to 102	N 89° 26' 13" E	85.00'
102 to 103	S 00° 33' 49" E	10.00'
107 to 104	S 89° 26' 13" W	90.00'
104 to 105	N 00° 33' 47" W	20.00'
105 to 106	N 89° 26' 13" E	90.00'
106 to 107	S 00° 33' 47" E	20.00'

BASIS OF EXISTING RIGHT-OF-WAY	
ROUTE	BASIS
16TH ST.	RACINE HARDWARE MANUFACTURING CO. SUB. APPAISERS OF SCHOOL & UNIVERSITY LANDS J.H. KELLY'S SUB.
MEAD ST.	RACINE HARDWARE MANUFACTURING CO. SUB. J.H. KELLY'S SUB.
HOWE ST.	J.H. KELLY'S SUB.

NOTE - PROPERTY LINE STATIONS ARE COMPUTED FROM INFORMATION OF RECORD AND ARE APPROXIMATE ONLY.

SE-SW
SEC. 16, T3N, R23E

CONCRETE MONUMENT
W/BRASS CAP
Y=183,028.401
X=638,927.973



APPAISERS OF SCHOOL
AND UNIVERSITY LANDS
TO THE OFFICE OF THE
SEC. OF THE STATE
BLOCK 83

①
S.C. JOHNSON
& SON, INC
TX. KY..01674001
09042005
09042004
09053001

BEGIN RELOCATION
ORDER
STA. 11+35.38
Y= 180,725.71
X= 637,096.14

AVENUE

RACINE

16TH

STREET

MEAD STREET

HOWE STREET (60' R/W)

②
S.C. JOHNSON
& SON, INC
TX. KY..09088000
090910001

③
S.C. JOHNSON
& SON, INC
TX. KY..09107000

BLCK 86
RACINE HARDWARE

THE EAST 1/2 BLOCK 86
J.H. KELLEY'S SUBDIVISION

SW-SW
SEC. 16, T3N, R23E
CITY OF RACINE
RACINE COUNTY, WISCONSIN

PARCEL NOTES

- PARCEL 1:
 (1104 16TH ST.) THE SECURITY WALL/FENCE WILL NOT BE DISTURBED.
 (1525 HOWE ST.) THE RETAINING WALL WILL NOT BE DISTURBED.
 THE SIGN WILL NEED TO BE REINSTALLED.
 (1401 HOWE ST.) THE SIGN WILL NEED TO BE REINSTALLED.
 (1526 GRAND AVE.) THE FENCING WILL NOT NEED TO BE REMOVED.
 THE SIGN WILL NOT NEED TO BE REINSTALLED.

REVISION DATE	DATE 03/18/19	SCALE, FEET 0 25 50	HWY: 16TH STREET	STATE R/W PROJECT NUMBER 2703-00-24	PLAT SHEET 4.06
	GRID FACTOR		COUNTY: RACINE	CONSTRUCTION PROJECT NUMBER 2703-00-74	PS&E SHEET

COURSE TABLE
PARCEL 1

FROM POINT TO POINT	BEARING	DISTANCE
107 to 104	S 89° 26' 13" W	90.00'
104 to 105	N 00° 33' 47" W	20.00'
105 to 106	N 89° 26' 13" E	90.00'
106 to 107	S 00° 33' 47" E	20.00'

111 to 108	S 89° 26' 13" W	99.00'
108 to 109	N 00° 30' 39" W	22.00'
109 to 110	N 89° 26' 13" E	80.00'
110 to 111	S 00° 30' 39" E	17.00'
111 to 400	N 89° 26' 13" E	19.00'
400 to 401	S 00° 30' 39" E	5.00'

117 to 112	S 89° 26' 13" W	86.00'
112 to 113	N 00° 00' 00" E	19.00'
113 to 114	N 89° 26' 20" E	76.00'
114 to 115	S 00° 00' 00" E	17.00'
115 to 116	N 89° 26' 15" E	10.00'
116 to 117	S 00° 00' 00" E	5.00'

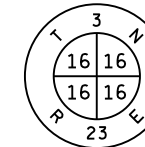
BASIS OF EXISTING RIGHT-OF-WAY

ROUTE	BASIS
16TH ST.	APPRAISERS OF SCHOOL & UNIVERSITY LANDS
HOWE ST.	APPRAISERS OF SCHOOL & UNIVERSITY LANDS
FRANKLIN ST.	APPRAISERS OF SCHOOL & UNIVERSITY LANDS
CENTER ST.	APPRAISERS OF SCHOOL & UNIVERSITY LANDS

NOTE - PROPERTY LINE STATIONS ARE COMPUTED FROM INFORMATION OF RECORD AND ARE APPROXIMATE ONLY.

GN

CONCRETE MONUMENT
W/BRASS CAP
Y=183,028.401
X=638,927.973

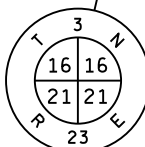


2284.94'

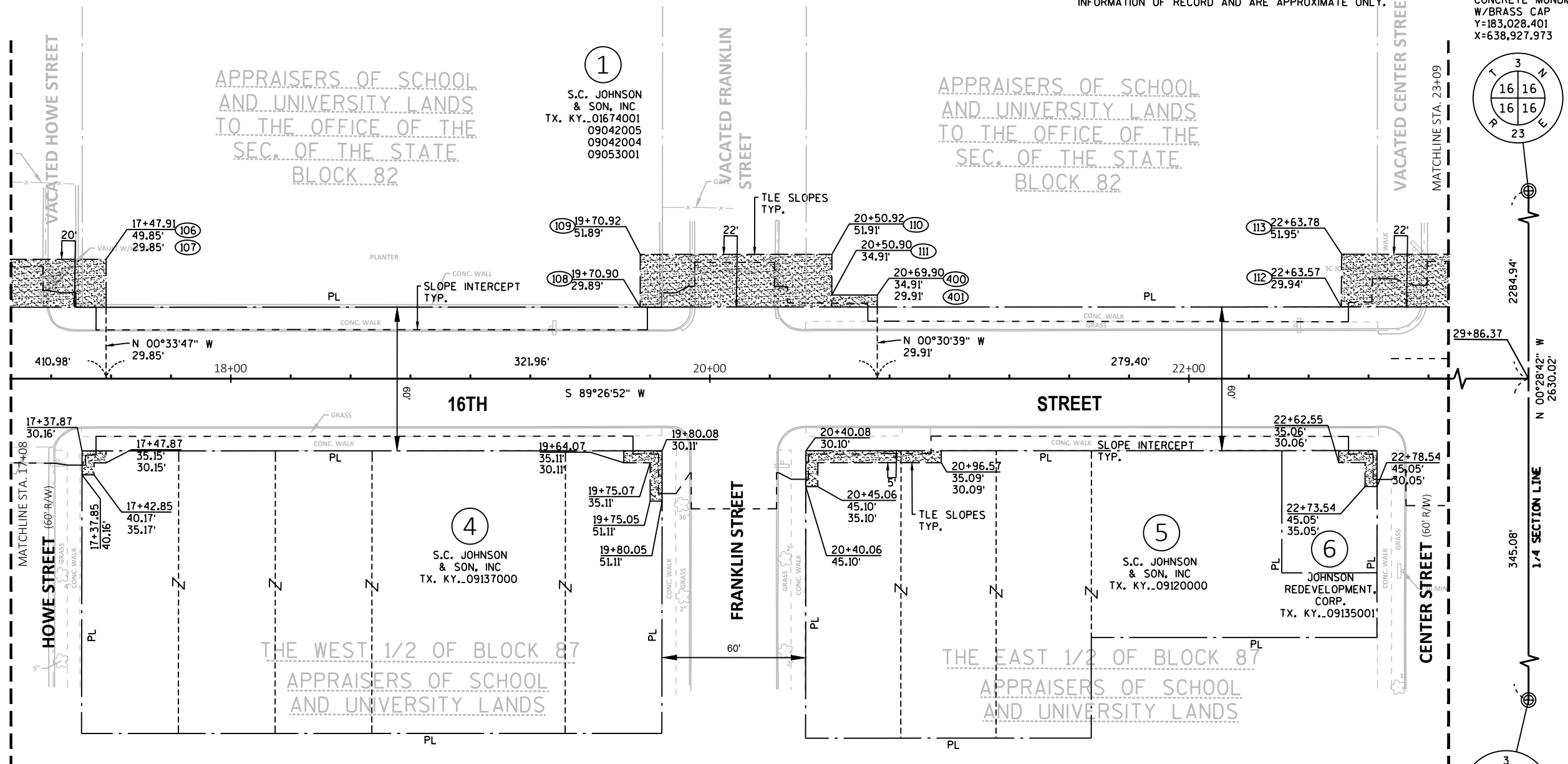
N 00°28'42" W
2630.02'

345.08'

1-4 SECTION LINE



CONCRETE MONUMENT
W/BRASS CAP
Y=180,398.476
X=638,949.925



APPRAISERS OF SCHOOL
AND UNIVERSITY LANDS
TO THE OFFICE OF THE
SEC. OF THE STATE
BLOCK 82

APPRAISERS OF SCHOOL
AND UNIVERSITY LANDS
TO THE OFFICE OF THE
SEC. OF THE STATE
BLOCK 82

THE WEST 1/2 OF BLOCK 87
APPRAISERS OF SCHOOL
AND UNIVERSITY LANDS

THE EAST 1/2 OF BLOCK 87
APPRAISERS OF SCHOOL
AND UNIVERSITY LANDS

SE-SW
SEC. 16, T3N, R23E
CITY OF RACINE
RACINE COUNTY, WISCONSIN

PARCEL NOTES

- PARCEL 1:
- (1104 16TH ST.) THE SECURITY WALL/FENCE WILL NOT BE DISTURBED.
 - (1525 HOWE ST.) THE RETAINING WALL WILL NOT BE DISTURBED. THE SIGN WILL NEED TO BE REINSTALLED.
 - (1401 HOWE ST.) THE SIGN WILL NEED TO BE REINSTALLED.
 - (1526 GRAND AVE.) THE FENCING WILL NOT NEED TO BE REMOVED. THE SIGN WILL NOT NEED TO BE REINSTALLED.

REVISION DATE	DATE 03/18/19	SCALE, FEET 0 25 50	HWY: 16TH STREET	STATE R/W PROJECT NUMBER 2703-00-24	PLAT SHEET 4.07
	GRID FACTOR		COUNTY: RACINE	CONSTRUCTION PROJECT NUMBER 2703-00-74	PS&E SHEET

COURSE TABLE
PARCELS 1, 9, 10,
11, 12, 13 & 14

FROM POINT TO POINT	BEARING	DISTANCE
117 to 112	S 89°26'13" W	86.00'
112 to 113	N 00°00'00" E	22.00'
113 to 114	N 89°26'20" E	76.00'
114 to 115	S 00°00'00" E	17.00'
115 to 116	N 89°26'15" E	10.00'
116 to 117	S 00°00'00" E	5.00'
121 to 118	S 89°26'14" W	45.00'
118 to 119	N 00°33'34" W	8.00'
119 to 120	N 89°26'23" E	45.00'
120 to 121	S 00°33'35" E	8.00'
401 to 402	S 89°26'13" W	30.00'
402 to 403	N 00°33'08" W	10.00'
403 to 404	N 89°26'13" E	30.00'
404 to 401	S 00°33'08" E	10.00'

201 to 198	S 89°27'02" W	31.71'
198 to 199	N 00°32'58" W	10.00'
199 to 200	N 89°27'02" E	31.73'
200 to 201	S 00°26'39" E	10.00'

201 to 200	N 00°26'39" W	10.00'
200 to 202	N 89°27'02" E	8.27'
202 to 203	S 00°32'58" E	10.00'
203 to 201	S 89°27'00" W	8.29'
209 to 204	S 89°27'02" W	27.00'
204 to 205	N 00°32'58" W	7.00'
205 to 208	N 89°27'02" E	27.00'
208 to 209	S 00°32'58" E	7.00'

217 to 218	S 00°27'25" E	7.00'
218 to 219	S 89°27'02" W	15.04'
219 to 216	N 00°32'27" W	7.00'
216 to 217	N 89°27'02" E	15.05'

217 to 220	N 89°27'02" E	12.95'
220 to 221	S 00°32'27" E	7.00'
221 to 218	S 89°27'02" W	12.96'
218 to 217	N 00°27'25" W	7.00'

222 to 223	S 00°27'25" E	10.00'
223 to 224	S 89°27'02" W	19.24'
224 to 225	N 00°32'58" W	10.00'
225 to 222	N 89°27'02" E	19.25'

222 to 226	N 89°27'02" E	35.75'
226 to 227	S 00°32'58" E	10.00'
227 to 223	S 89°27'02" W	35.76'
223 to 222	N 00°27'25" W	10.00'

PARCEL NOTES

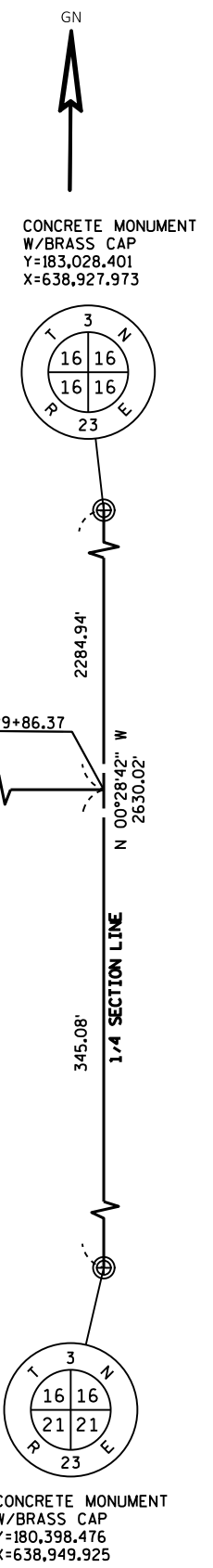
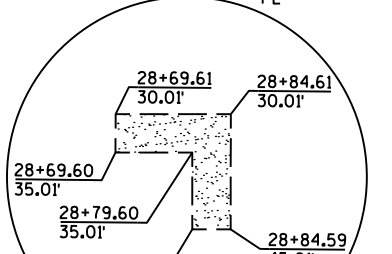
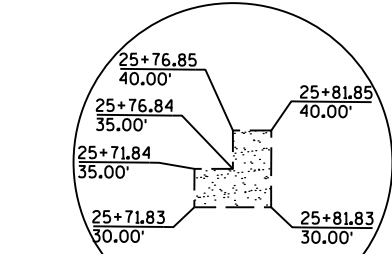
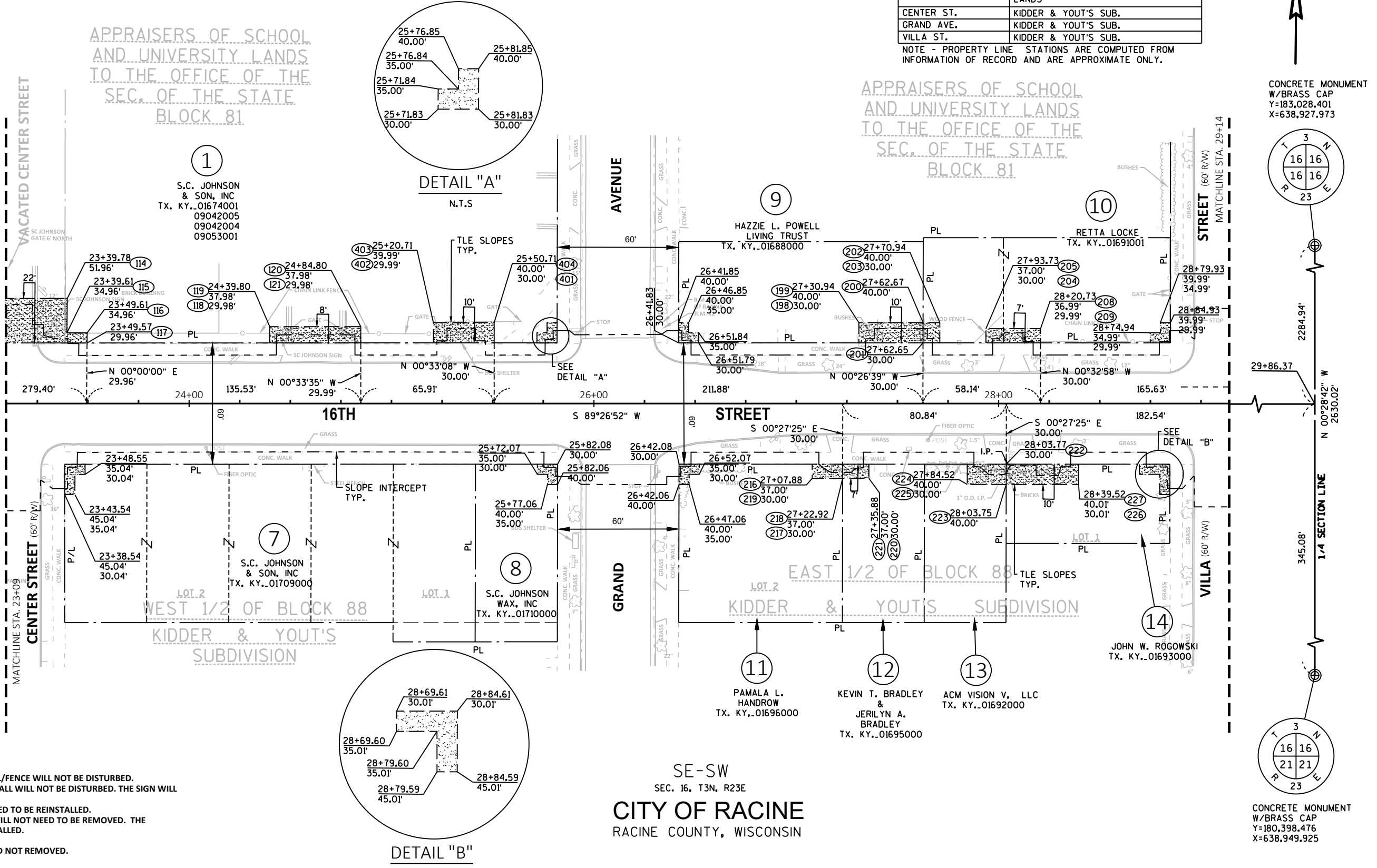
PARCEL 1:
(1104 16TH ST.) THE SECURITY WALL/FENCE WILL NOT BE DISTURBED.
(1525 HOWE ST.) THE RETAINING WALL WILL NOT BE DISTURBED. THE SIGN WILL NEED TO BE REINSTALLED.
(1401 HOWE ST.) THE SIGN WILL NEED TO BE REINSTALLED.
(1526 GRAND AVE.) THE FENCING WILL NOT NEED TO BE REMOVED. THE SIGN WILL NOT NEED TO BE REINSTALLED.

PARCEL 12:
THE SHRUBS WILL BE TRIMMED AND NOT REMOVED.

PARCEL 13:
THE BRICKS FOR THE PAVEMENT WILL BE REMOVE, SALVAGE, AND REINSTALL.

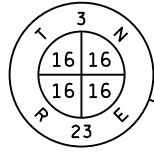
BASIS OF EXISTING RIGHT-OF-WAY	
ROUTE	BASIS
16TH ST.	KIDDER & YOUT'S SUB. APPRAISERS OF SCHOOL & UNIVERSITY LANDS
CENTER ST.	KIDDER & YOUT'S SUB.
GRAND AVE.	KIDDER & YOUT'S SUB.
VILLA ST.	KIDDER & YOUT'S SUB.

NOTE - PROPERTY LINE STATIONS ARE COMPUTED FROM INFORMATION OF RECORD AND ARE APPROXIMATE ONLY.



REVISION DATE	DATE 03/18/19	SCALE, FEET	HWY: 16TH STREET	STATE R/W PROJECT NUMBER 2703-00-24	PLAT SHEET 4.08
	GRID FACTOR		COUNTY: RACINE	CONSTRUCTION PROJECT NUMBER 2703-00-74	PS&E SHEET

CONCRETE MONUMENT
W/BRASS CAP
Y=183,028.401
X=638,927.973



COURSE TABLE
PARCELS 15, 16, 18,
19, 20 & 21

FROM POINT TO POINT	BEARING	DISTANCE
240 to 241	S 89°28'21" W	20.17'
241 to 242	N 00°31'39" W	8.00'
242 to 243	N 89°28'21" E	20.19'
243 to 240	S 00°23'13" E	8.00'

240 to 243	N 00°23'13" W	8.00'
243 to 244	N 89°28'21" E	18.81'
244 to 245	S 00°31'39" E	8.00'
245 to 240	S 89°28'21" W	18.83'

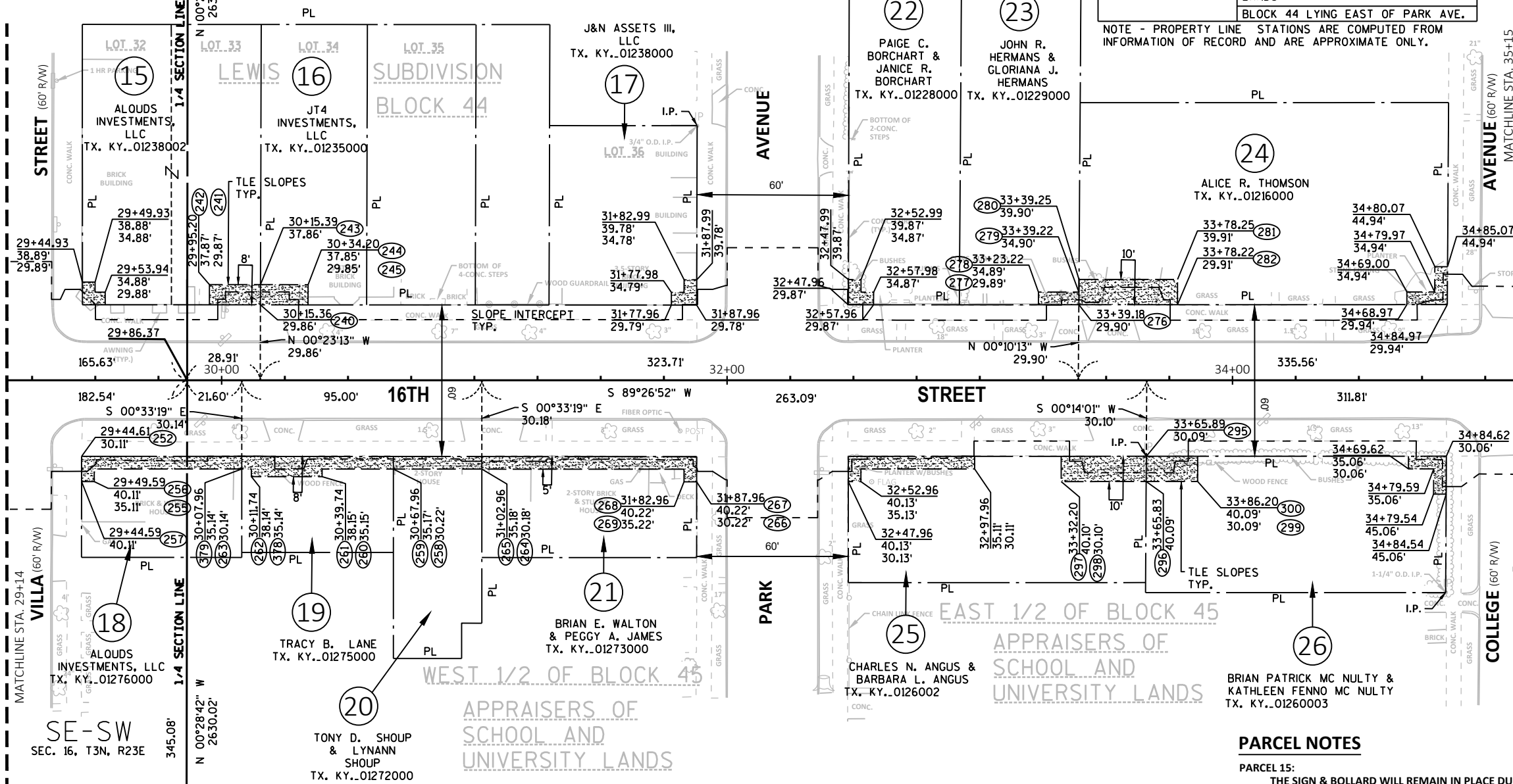
263 to 379	S 00°33'19" E	5.00'
379 to 255	S 89°28'22" W	58.36'
255 to 256	S 00°27'25" E	5.00'
256 to 257	S 89°28'21" W	5.00'
257 to 252	N 00°27'25" W	10.00'
252 to 263	N 89°28'21" E	63.35'

263 to 258	N 89°28'21" E	60.00'
258 to 259	S 00°33'19" E	5.00'
259 to 260	S 89°28'22" W	28.22'
260 to 261	S 00°31'38" E	3.00'
261 to 262	S 89°28'22" W	28.00'
262 to 378	N 00°31'38" W	3.00'
378 to 379	S 89°28'22" W	3.78'
379 to 263	N 00°33'19" W	5.00'

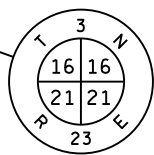
264 to 265	S 00°33'19" E	5.00'
265 to 259	S 89°28'22" W	35.00'
259 to 258	N 00°33'19" W	5.00'
258 to 264	N 89°28'21" E	35.00'

264 to 266	N 89°28'21" E	85.00'
266 to 267	S 00°33'20" E	10.00'
267 to 268	S 89°28'21" W	5.00'
268 to 269	N 00°33'20" W	5.00'
269 to 265	S 89°28'22" W	80.00'
265 to 264	N 00°33'19" W	5.00'

SE-SW
SEC. 16, T3N, R23E



SE-SW
SEC. 16, T3N, R23E



CONCRETE MONUMENT
W/BRASS CAP
Y=180,398.476
X=638,949.925

SW-SE
SEC. 16, T3N, R23E
CITY OF RACINE
RACINE COUNTY, WISCONSIN

ROUTE	BASIS
16TH ST.	LEWIS SUB. APPRAISERS OF SCHOOL & UNIVERSITY LANDS BLOCK 44 LYING EAST OF PARK AVE.
VILLA ST.	LEWIS SUB. APPRAISERS OF SCHOOL & UNIVERSITY LANDS
PARK AVE.	LEWIS SUB. BLOCK 44 LYING EAST OF PARK AVE.
COLLEGE AVE.	APPRAISERS OF SCHOOL & UNIVERSITY LANDS BLOCK 44 LYING EAST OF PARK AVE.

NOTE - PROPERTY LINE STATIONS ARE COMPUTED FROM INFORMATION OF RECORD AND ARE APPROXIMATE ONLY.

COURSE TABLE
PARCELS 23, 24,
25 & 26

FROM POINT TO POINT	BEARING	DISTANCE
276 to 277	S 89°25'52" W	16.00'
277 to 278	N 00°10'13" W	5.00'
278 to 279	N 89°25'53" E	16.00'
279 to 276	S 00°10'13" E	5.00'

276 to 280	N 00°10'13" W	10.00'
280 to 281	N 89°25'54" E	39.00'
281 to 282	S 00°22'11" E	10.00'
282 to 276	S 89°25'52" W	39.03'

295 to 296	S 00°14'01" E	10.00'
296 to 297	S 89°25'52" W	33.63'
297 to 298	N 00°34'08" W	10.00'
298 to 295	N 89°25'52" E	33.69'

295 to 299	N 89°25'52" E	20.31'
299 to 300	S 00°34'08" E	10.00'
300 to 296	S 89°25'52" W	20.37'
296 to 295	N 00°14'01" W	10.00'

PARCEL NOTES

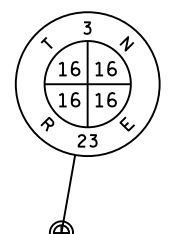
- PARCEL 15: THE SIGN & BOLLARD WILL REMAIN IN PLACE DURING THE USE OF THE TLE.
- PARCEL 16: NO PART OF THE BUILDING OR THE DOWNSPOUT WILL BE IMPACTED BY CONSTRUCTION.
- PARCEL 17: NO PART OF THE BUILDING WILL BE IMPACTED BY CONSTRUCTION.
- PARCEL 18: NO PART OF THE BUILDING OR STOOP WILL BE IMPACTED BY CONSTRUCTION.
- PARCEL 19: THE RETAINING WALLS AND STEPS WILL NOT BE IMPACTED BY CONSTRUCTION.
- PARCEL 21: THE PATIO WILL NOT BE IMPACTED BY CONSTRUCTION.
- PARCEL 22: THE BUSHES WILL NOT BE IMPACTED BY CONSTRUCTION.
- PARCEL 26: THE WOOD FENCE WILL NOT BE IMPACTED BY CONSTRUCTION.

REVISION DATE	DATE 03/18/19	SCALE, FEET 0 25 50	HWY: 16TH STREET	STATE R/W PROJECT NUMBER 2703-00-24	PLAT SHEET 4.09
	GRID FACTOR		COUNTY: RACINE	CONSTRUCTION PROJECT NUMBER 2703-00-74	PS&E SHEET

ROUTE	BASIS
16TH ST.	APPRAISERS OF SCHOOL & UNIVERSITY LANDS
COLLEGE AVE.	APPRAISERS OF SCHOOL & UNIVERSITY LANDS
WISCONSIN AVE.	APPRAISERS OF SCHOOL & UNIVERSITY LANDS
MAIN ST.	APPRAISERS OF SCHOOL & UNIVERSITY LANDS

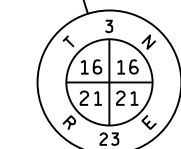


CONCRETE MONUMENT
W/BRASS CAP
Y=183,028.401
X=638,927.973



N 00°28'42" W
2630.02'

1/4 SECTION LINE
345.08'



CONCRETE MONUMENT
W/BRASS CAP
Y=180,398.476
X=638,949.925

