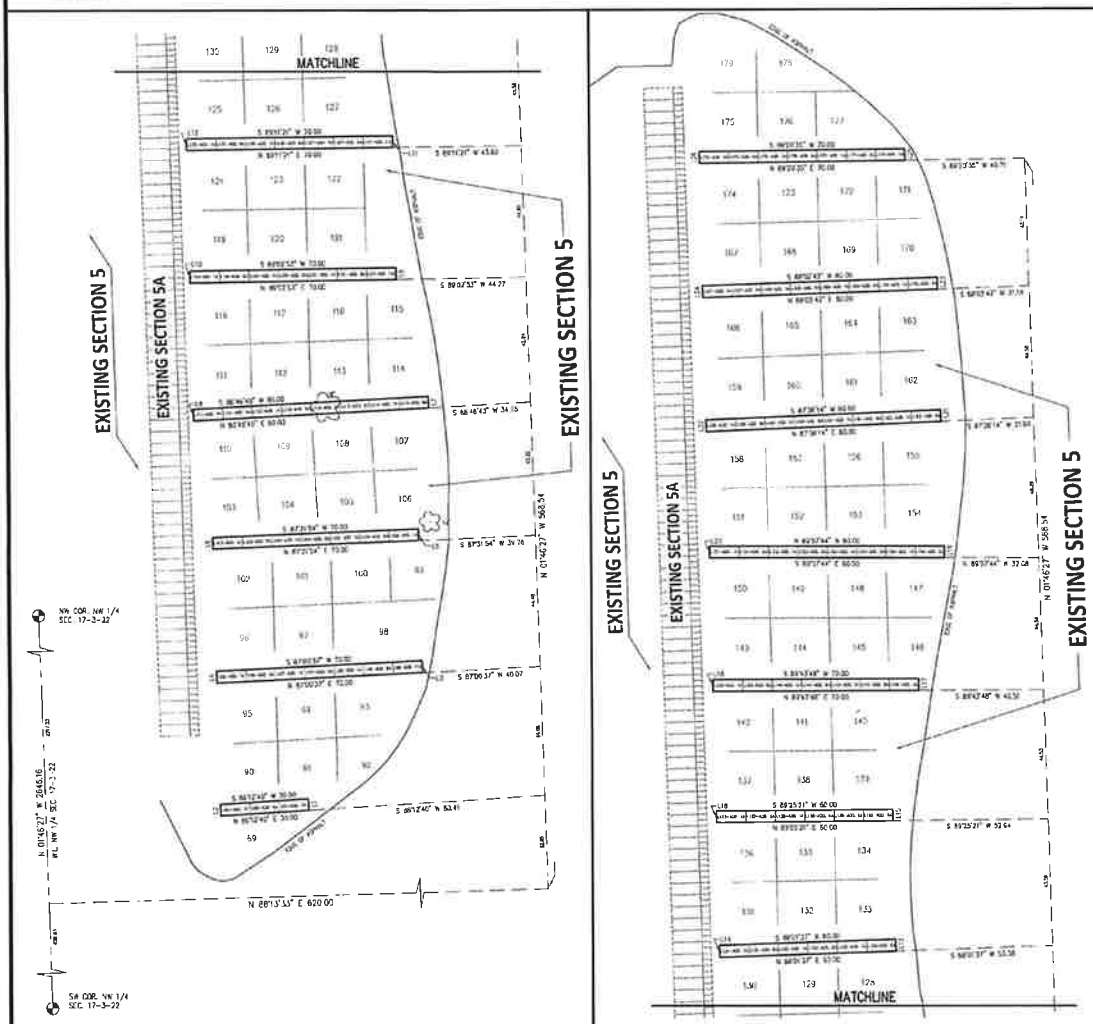


MOUND CEMETERY - SECTION 5 EAST ALLEYS

PART OF THE SW 1/4 OF THE NW 1/4 SECTION 17, TOWNSHIP 3 NORTH, RANGE 23 EAST
CITY OF RACINE, COUNTY OF RACINE, STATE OF WISCONSIN



SURVEYOR'S CERTIFICATE
I, MARK R. MAZDEHL, Professional Land Surveyor, do hereby certify
THAT I have surveyed, divided and mapped Mound Cemetery - Section 5 East Alleys in the City of Racine, County of Racine, State of Wisconsin. THAT I have made such survey, first division and plat by the direction of the City of Racine, Owner of said land
THAT such plat is a correct representation of all of the exterior boundaries of the land surveyed and subdivided therein.

Date February 1, 2022

Signature: [Handwritten Signature]
Mark R. Mazdehl
Professional Land Surveyor, No. 00000118
Wisconsin Mason & Builder, S.C. 5-2273
1450 HANCOCK ST., SUITE 200 RACINE, WI 53406
(262) 634-5588

OWNER'S CERTIFICATE OF IDENTIFICATION
City of Racine, a corporation duly organized and existing under and by virtue of the laws of the State of Wisconsin, as owner does hereby certify that said corporation owned the land described on the plat to be surveyed, divided, mapped, and dedicated as hereinafter captioned.

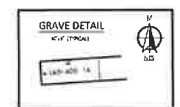
In Witness Whereof, the said City of Racine, Director of Parks, has caused these presents to be signed by Tom Malback, its Director of Racine, Wisconsin, and its corporate seal to be hereunto affixed on this ____ day of _____, 2022.

Witness _____
By _____
Tom Malback, Director of Parks

CITY'S RESOLUTION
RESOLVED that the Plan of Mound Cemetery - Section 5 East Alleys, located in the City of Racine, is hereby approved by the Common Council of the City of Racine on this ____ day of _____, 2022. Resolution _____

Cory Mason, Mayor
Tara Cookidge, City Clerk and Treasurer Manager

Line #	Length	Description	Line #	Length	Description
L1	4.00	N 89° 23' 27" E 40.00'	L14	4.00	S 01° 18' 22" E
L2	4.00	N 89° 23' 27" E 40.00'	L15	4.00	N 89° 23' 27" E
L3	4.00	N 89° 23' 27" E 40.00'	L16	4.00	S 89° 23' 27" E
L4	4.00	S 89° 23' 27" E 40.00'	L17	4.00	S 89° 23' 27" E
L5	4.00	N 89° 23' 27" E 40.00'	L18	4.00	S 89° 23' 27" E
L6	4.00	S 89° 23' 27" E 40.00'	L19	4.00	N 89° 23' 27" E
L7	4.00	N 89° 23' 27" E 40.00'	L20	4.00	N 89° 23' 27" E
L8	4.00	S 89° 23' 27" E 40.00'	L21	4.00	N 89° 23' 27" E
L9	4.00	N 89° 23' 27" E 40.00'	L22	4.00	N 89° 23' 27" E
L10	4.00	S 89° 23' 27" E 40.00'	L23	4.00	N 89° 23' 27" E
L11	4.00	N 89° 23' 27" E 40.00'	L24	4.00	N 89° 23' 27" E
L12	4.00	S 89° 23' 27" E 40.00'	L25	4.00	N 89° 23' 27" E
L13	4.00	N 89° 23' 27" E 40.00'	L26	4.00	S 89° 23' 27" E



LEGEND AND NOTES
BEARING BASE FOR THIS PLAN IS GRID NORTH, WISCONSIN COORDINATE SYSTEM, SOUTH ZONE, BASED UPON NAD 1987. THE WEST LINE OF THE NW 1/4 OF SECTION 17 3 23 IS ASSUMED TO BEAR N 89° 45' 27" W.

ALL DISTANCES REFERRED TO THE NEAREST HUNDRETH OF A FOOT.

ALL ANGLES TURNED TO THE NEAREST SECOND AND COMPUTED TO THE NEAREST HALF SECOND.