

September 11, 2024

Mr. Nate Tillis—Wastewater Utility Director
Racine Wastewater Utility
800 Center Street, Room 227
Racine, WI 53403

Re: Request for Approval of Sanitary Sewer Extension
Christina Estates East Subdivision
Village of Mount Pleasant

**SEWER UTILITY
DISTRICT NO.1**

8811 Campus Drive
Mount Pleasant, WI 53406

T: 262.664.7800
F: 262.664.7801
info@mtpleasantwi.gov
www.mtpleasantwi.gov

Police Non-Emergency
T: 262.884.0454

South Shore Fire Dept.
Non-Emergency
T: 262.554.8812

Dear Mr. Tillis,


The Mount Pleasant Sewer Utility has reviewed and approved the plans for Christina Estates East, a proposed subdivision addition in the Village of Mount Pleasant, prepared by Nielsen, Madsen & Barber, S.C., dated 3-11-2024.

The extension in question includes approximately 315 L.F. of 8" diameter sanitary sewer and will serve 10 new lots on Hunter Drive in Mount Pleasant. The ultimate daily flow expected from this extension is approximately 2,580 gallons per day. This extension will drain by gravity into the Mount Pleasant interceptor system, which is directly tributary to the Racine Wastewater Treatment Plant. Mount Pleasant's currently available average daily flow capacity at the plant is approximately 5.11 MGD, which is more than adequate to handle the anticipated flow from this extension. The approximate location of the extension is shown on the attached exhibit.

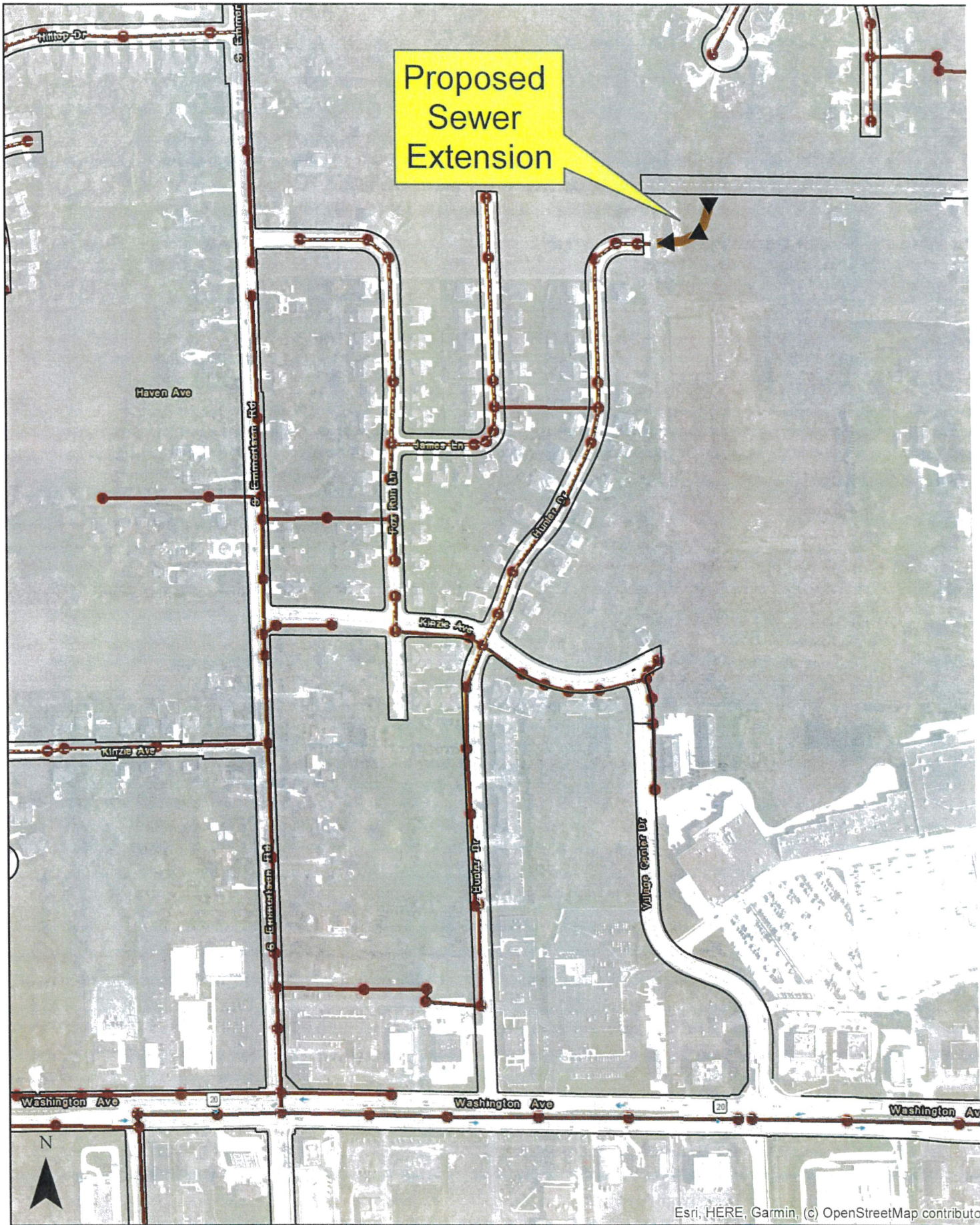
Per Exhibit F1(a) of the Sewer Agreement, Mount Pleasant is allotted 74.679 MGD (peak hourly flow) at the Bryn Mawr meter point, to which the subject sewer extension is tributary to. Historic peak flows at this metering point during extreme rain events are in the range of 25-30 MGD. The subject sewer extension is calculated to have an ultimate peak flow of 0.010 MGD (peaking factor 4), which is well within the existing capacity constraints at the Bryn Mawr metering point.

We politely request that the Racine Wastewater Commission approve the aforementioned extension.

Sincerely,
Mount Pleasant Sewer Utility District #1


Anthony J. Beyer, P.E.
Director of Public Works/Village Engineer

Encl. as Noted



Proposed
Sewer
Extension

1 inch = 400 feet

Esri, HERE, Garmin, (c) OpenStreetMap contributo