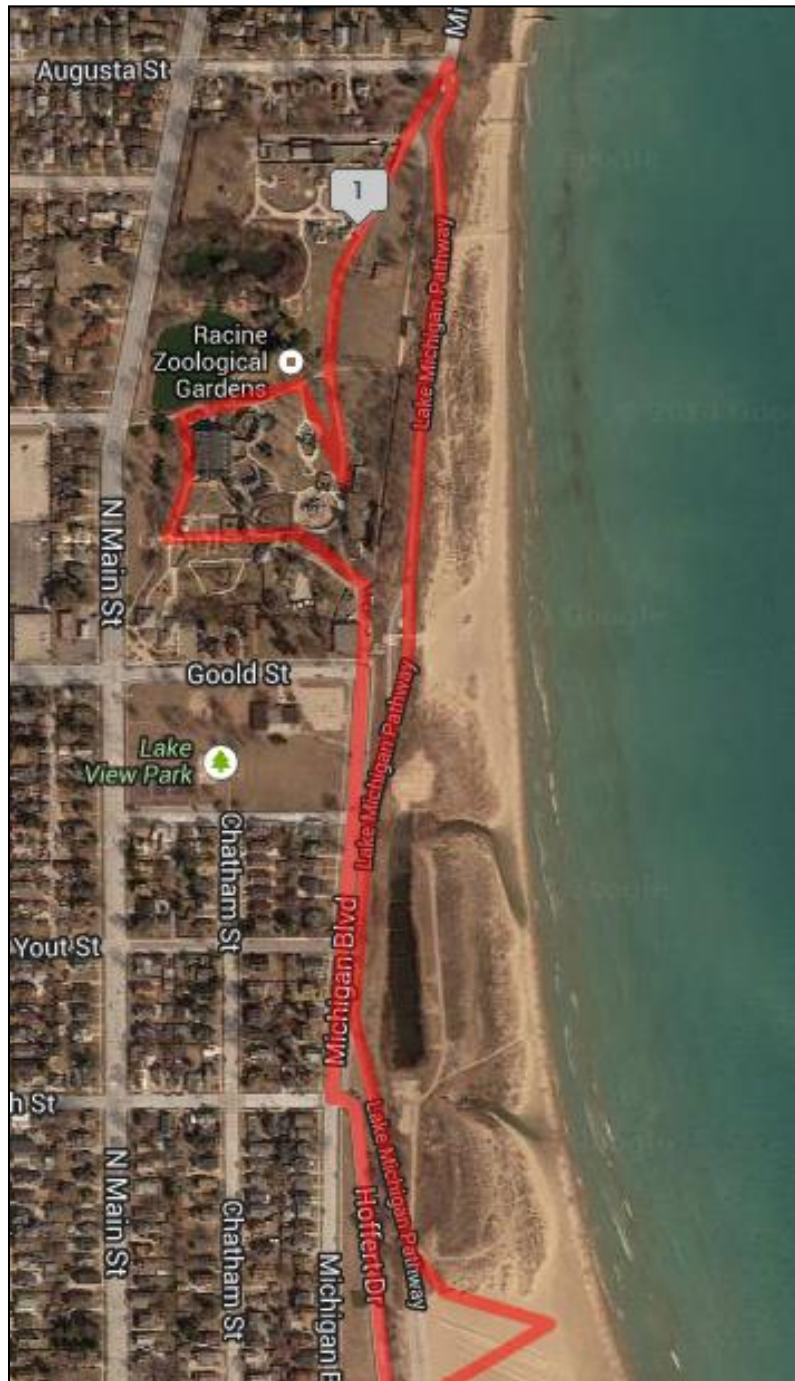


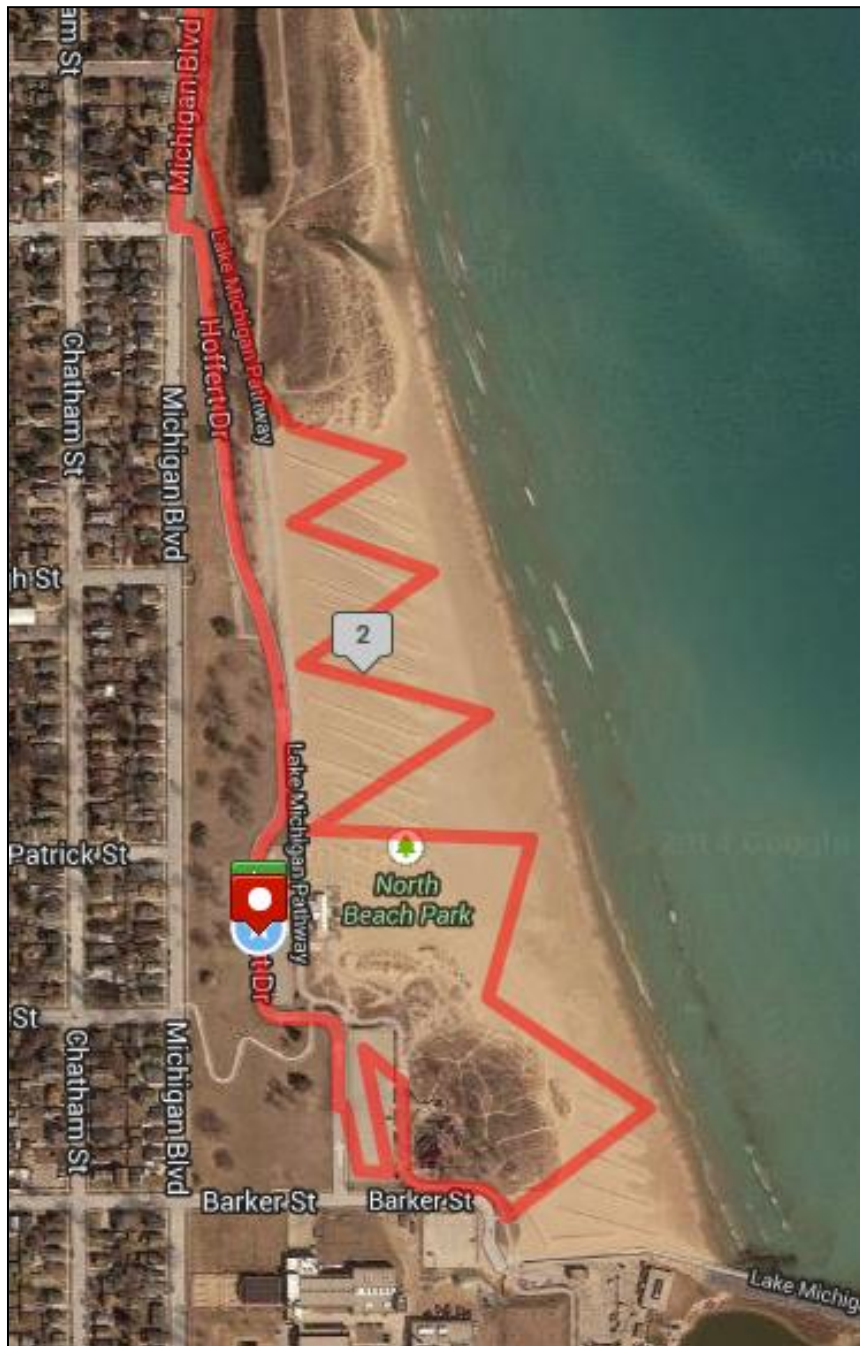
START: Hoffert Drive, parallel with Beachside Oasis (where the Ironman finish line is.)
8 a.m. to 2 p.m.

1) Head north on Hoffert Drive to Michigan Blvd.

2) Right on Michigan Blvd.



- 3) Runners enter Racine Zoo from gate at Michigan Blvd & Goold St
- 4) Course runs through Racine Zoo
- 5) Course exits zoo at Michigan Blvd and Augusta St.
- 6) Get on Lake Michigan Pathway and head south back toward North Beach
- 7) At North Beach, course continues on the actual sand of the beach



- 8) Course zig-zags through the beach. Runners exit in the same location as they do for Ironman---near Barker St.
- 9) Runners re-enter Pathway and run through Kids' Cove parking lot.
- 10) Re-enter Hoffert Drive and finish same as start---parallel to Beachside Oasis.