



2 0 2 5

# ASSISTED LIVING IN RACINE COUNTY

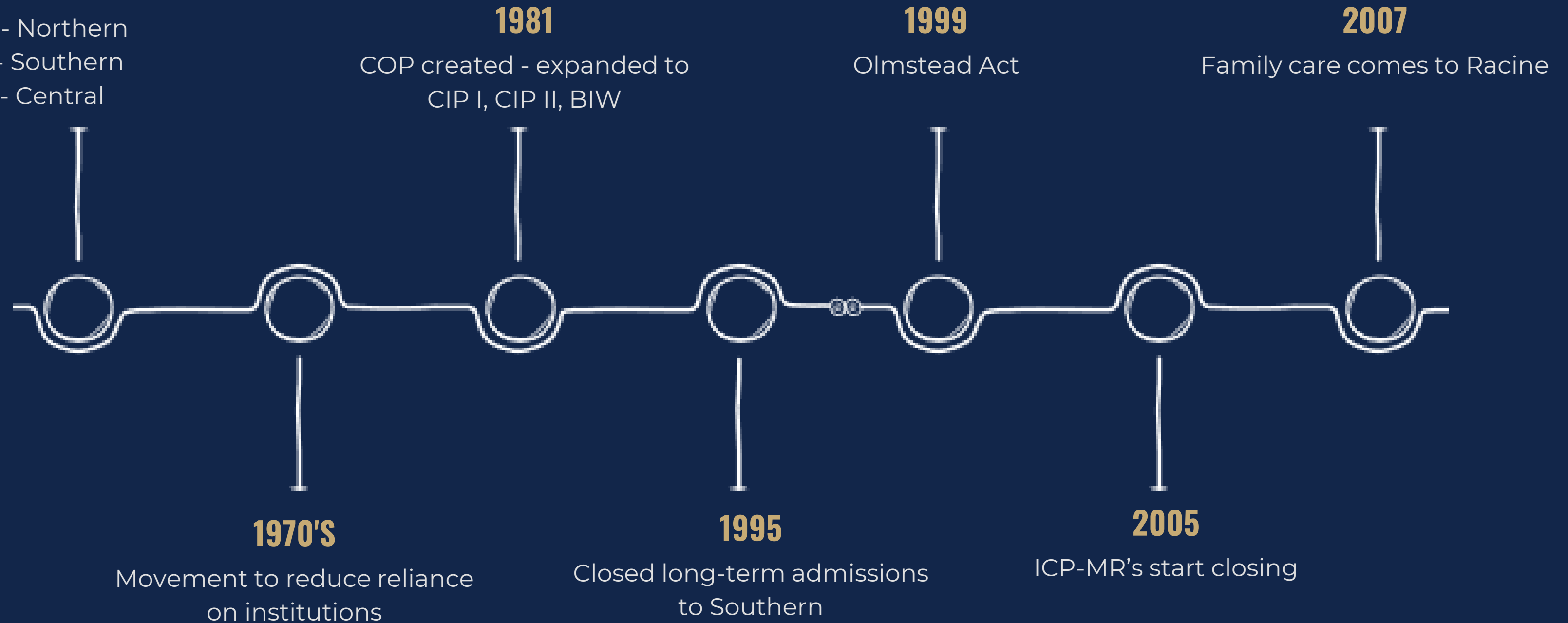


# HISTORY OF LONGTERM CARE IN WISCONSIN



## INSTITUTIONALIZATION

- 1897 - Northern
- 1919 - Southern
- 1959 - Central





Assisted Living or Group Homes are terms commonly used to describe community living arrangements.



## LEGAL ENTITIES



**CERTIFIED 1-2  
BED ADULT  
FAMILY HOME**



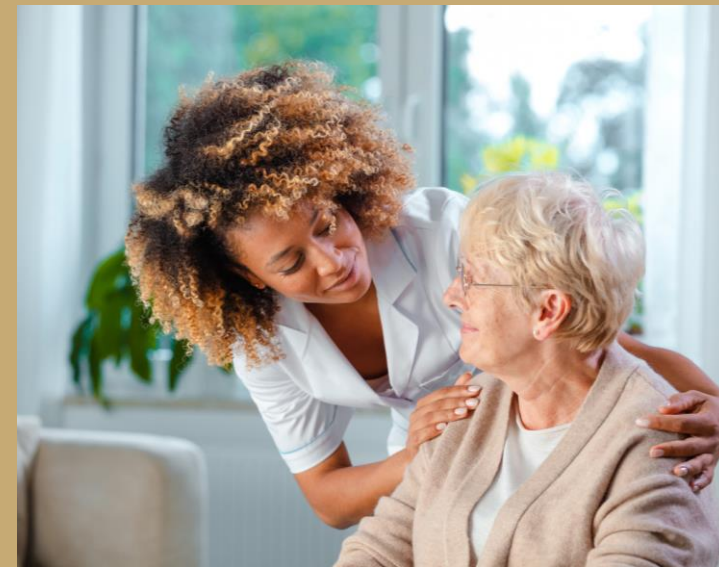
**STATE LICENSED  
ADULT FAMILY  
HOME**



**COMMUNITY-  
BASED  
RESIDENTIAL  
FACILITY**



**RESIDENTIAL  
CARE COMPLEX**



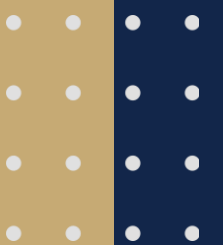
**NURSING HOME**

# NURSING HOME

---

A nursing home is defined in Wis. Stat. § ch. 50.01(3) as a place where five or more people (who are not related to the operator) live because they need 24-hour nursing care. This can include limited nursing care, intermediate level nursing care, and skilled nursing services.

Nursing Homes are regulated by the Division Of Quality Assurance.





# NURSING HOMES IN RACINE COUNTY

---



Ridgewood



Burlington Health and  
Rehabilitation Center



Lakeshore at Siena



Lincoln Park Nursing and Rehab  
LLC



Oak Ridge Care Center





# RESIDENTIAL CARE APARTMENT COMPLEXES



Residential Care Apartment Complexes (RCACs) are independent apartment units that provide services including:

- Room and board
- Up to 28 hours per week of supportive care
- Personal care
- Nursing services

RCACs are regulated by the Division of Quality Assurance.



# RESIDENTIAL CARE COMPLEXES IN RACINE COUNTY



Home Harbor



Primrose of Mt. Pleasant



Waterford Senior Living



Elizabeth Gardens



Pleasant Point Senior Living



Parkview Gardens



Pillars at Crystal Bay



Killarney Kourt





# COMMUNITY-BASED RESIDENTIAL CARE FACILITY

---

Community-based residential facilities (CBRF) are places where five or more unrelated people live together in a community setting. Services offered include room and board, supervision, and support services. It can include up to three hours of nursing care per week.

CBRFs are regulated by the Division Of Quality Assurance.

**39 CBRFS ARE LOCATED IN RACINE COUNTY.  
OFTEN, RESIDENTIAL CARE COMPLEXES WILL  
ALSO HAVE AN AREA THAT IS A CBRF.**





# STATE REGULATED ADULT FAMILY HOMES

---

An adult family home is defined in Wis. Stat. § 50.01(1)(b) as a place where three or four adults who aren't related to the operator reside. They receive care, treatment, or services that are above the level of room and board. It may include up to seven hours per week of nursing care per resident.

These homes are regulated by the Division of Quality Assurance.

276 STATE LICENSED ADULT FAMILY HOMES WITH ROUGHLY 1,100 BEDS ARE LOCATED IN RACINE COUNTY.

---





# CERTIFIED ADULT FAMILY HOMES

---

Under Wis State 46.036, Wisconsin Department of Health Services establishes 1-2 bed AFH certification. These standards are issued under the authority of Medicaid Home and Community Based Services waivers.

Counties, Dept of Health Services managed Care Organizations such as Family Care, Partnership, PACE or IRIS can certify and serve as placing agencies.

**THERE IS NOT A STATE WIDE DIRECTORY OF THESE PROVIDERS  
OVER 88 FACILITIES AND 176 BEDS.**

**NEED TO SEARCH THE PROVIDER NETWORKS FOR THE VARIOUS  
MCOS THAT ARE UNDER CONTRACT WITH THE STATE OF WISCONSIN  
TO CERTIFY A HOME IN RACINE COUNTY.**

---







# COMMON QUESTIONS

---

- Who oversees the facilities?
- What if the facility is doing a poor job of managing their residents?
- Our community is saturated with facilities, how can we stop this?
- How do I complain about facilities?
- Other questions?





## COUNTY OF RACINE ESSENTIAL WORKERS (CREW)

- CREW is an initiative to promote collaboration and communication between HSD and law enforcement agencies.
- Goal is to ensure continuity of mental health services in Racine County while promoting early engagement and intervention.
- Quarterly CREW meetings allow for updates amongst Crisis Services, Law Enforcement, Fire/EMS discussion of any concerns.
- Crisis Services providing education on CREW during roll call meetings throughout the various municipalities.
  - [CrewReferrals@racinecounty.com](mailto:CrewReferrals@racinecounty.com) for non-imminent referrals.



# CREW INTERVENTION

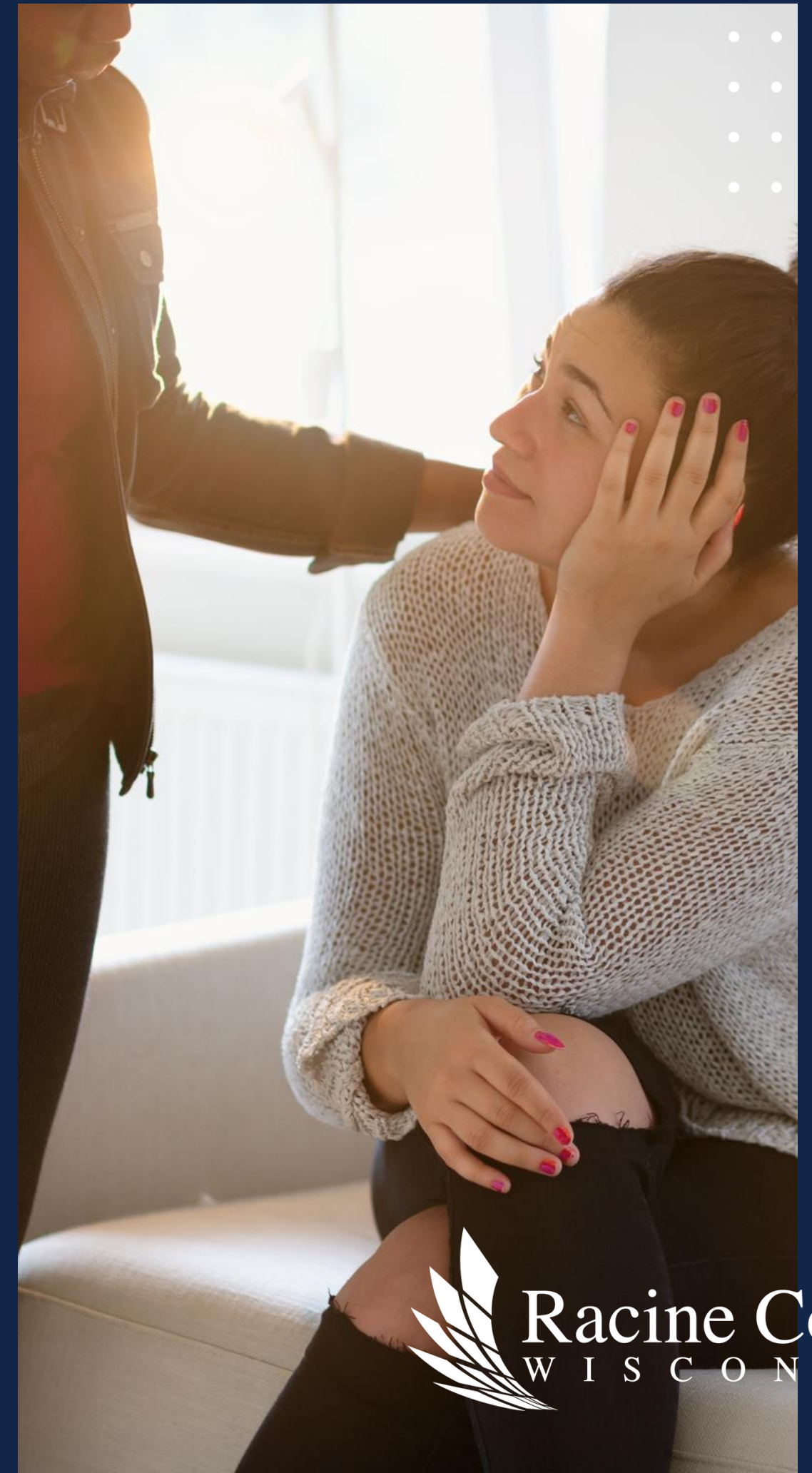
---

Follow up on CREW referrals for Adult Family Homes includes:

- Contact with the Payer Source (ie. County or Managed Care Organization (MCO))
- Contact with the County of Responsibility
- Contact with the Guardian
- Creation of a crisis plan
- Advocacy as appropriate for new placement
- Referrals to Department of Quality Assurance (DQA)

**\*THIS INCLUDES TIME INVESTMENT FOR FOLLOW UP THAT IS MORE APPROPRIATE FOR CRISIS SERVICES**

---





# ADULT FAMILY HOME (AFH) REFERRALS

---

- CREW must be made aware in order to assist.
- Saturation rate is higher in Racine County than surrounding counties.
- Making CREW referrals is the only way to identify providers that are of concern.
- CREW is a resource for Law Enforcement/Fire/EMS.
- Follow up with Managed Care Organizations and Department of Quality Assurance is necessary for any change to occur.







# THANK YOU

**Resources:**

*Division Of Quality Assurance Provider Guide and directories*

<https://www.dhs.wisconsin.gov/guide/provider-search.htm>

*Online Complaint for DQA*

<https://www.dhs.wisconsin.gov/guide/complaints.htm>

*Regulations related to certified homes:*

<https://www.dhs.wisconsin.gov/publications/p0/p00638.pdf>