

Eastern Racine County 40 Developmental Assets

Visit www.focusracine.org to download full reports and learn more.



Funding for the Asset Survey was provided by:



United Way
of Racine County
Partner Provider



Overview of External Assets

	Category	External Assets	1997	2002	2006	2010
Support	Family support	Family provides high levels of love and support.	61%	61%	63%	65%
	Positive family communication	Young person and parent(s) communicate and young person is willing to seek advice and counsel from parent(s).	20%	24%	23%	24%
	Other positive adult relationships	Young person receives support from three or more nonparent adults.	40%	40%	40%	43%
	Caring neighborhood	Young person experiences caring neighborhoods.	34%	30%	30%	33%
	Caring school climate	School provides a caring, encouraging environment.	20%	20%	24%	27%
	Parent involvement in schooling	Parent(s) actively involved in helping young person succeed.	26%	23%	25%	26%
Empowerment	Community values youth	Young person perceives that adults in the community value youth.	15%	16%	17%	20%
	Youth as resources	Young people are given useful roles in the community.	23%	21%	23%	25%
	Service to others	Young person serves in the community one hour or more per week.	48%	47%	48%	49%
	Safety	Young person feels safe at home, at school, and in the neighborhood.	46%	53%	51%	53%
Boundaries and Expectations	Family boundaries	Family has clear rules and consequences, and monitors the young person's whereabouts.	39%	40%	40%	42%
	School boundaries	School provides clear rules and consequences.	38%	40%	41%	47%
	Neighborhood boundaries	Neighbors take responsibility for monitoring young people's behavior.	43%	43%	42%	45%
	Adult role models	Parent(s) and other adults model positive, responsible behavior.	23%	21%	23%	23%
	Positive peer influence	Young person's best friends model responsible behavior.	52%	57%	57%	60%
	High expectations	Both parent(s) and teachers encourage the young person to do well.	39%	39%	43%	47%
Constructive Use of Time	Creative activities	Young person spends three or more hours per week in lessons or practice in music, theater, or other arts.	20%	21%	20%	17%
	Youth programs	Young person spends three or more hours per week in sports, clubs, or organizations at school and/or in community organizations.	54%	52%	54%	51%
	Religious community	Young person spends one hour or more per week in activities in a religious institution.	57%	55%	54%	49%
	Time at home	Young person is out with friends "with nothing special to do" two or fewer nights per week.	42%	46%	47%	46%

Source: *The 2011 United Way of Racine County Community Indicators Report*, The United Way of Racine County, Racine, WI. 2011.

Overview of Internal Assets

		Internal Assets	1997	2002	2006	2010
Commitment to Learning	Achievement motivation	Young person is motivated to do well in school.	61%	60%	61%	64%
	School engagement	Young person is actively engaged in learning.	60%	57%	52%	54%
	Homework	Young person reports doing at least one hour of homework every school day.	47%	48%	41%	41%
	Bonding to school	Young person cares about her or his school.	46%	42%	46%	49%
	Reading for pleasure	Young person reads for pleasure three or more hours per week.	21%	22%	23%	23%
Positive Values	Caring	Young person places high value on helping other people.	40%	42%	47%	50%
	Equality and social justice	Young person places high value on promoting equality and reducing hunger and poverty.	42%	44%	49%	50%
	Integrity	Young person acts on convictions and stands up for her or his beliefs.	61%	62%	65%	68%
	Honesty	Young person “tells the truth even when it is not easy.”	55%	59%	62%	65%
	Responsibility	Young person accepts and takes personal responsibility.	54%	56%	61%	64%
	Restraint	Young person believes it is important not to be sexually active or to use alcohol or other drugs.	34%	39%	38%	38%
Social Competencies	Planning and decision-making	Young person knows how to plan ahead and make choices.	27%	28%	28%	30%
	Interpersonal competence	Young person has empathy, sensitivity, and friendship skills.	40%	41%	41%	43%
	Cultural competence	Young person has knowledge of and comfort with people of different cultural/racial/ethnic backgrounds.	35%	40%	40%	40%
	Resistance skills	Young person can resist negative peer pressure and dangerous situations.	33%	37%	37%	39%
	Peaceful conflict resolution	Young person seeks to resolve conflict nonviolently.	39%	36%	36%	36%
Positive Identity	Personal power	Young person feels he or she has control over “things that happen to me.”	42%	39%	39%	43%
	Self-esteem	Young person reports having a high self-esteem.	50%	46%	46%	50%
	Sense of purpose	Young person reports that “my life has a purpose.”	55%	56%	56%	60%
	Positive view of personal future	Young person is optimistic about her or his personal future.	69%	69%	69%	71%

Percent of Youth Reporting Each External Asset, by Gender and Grade

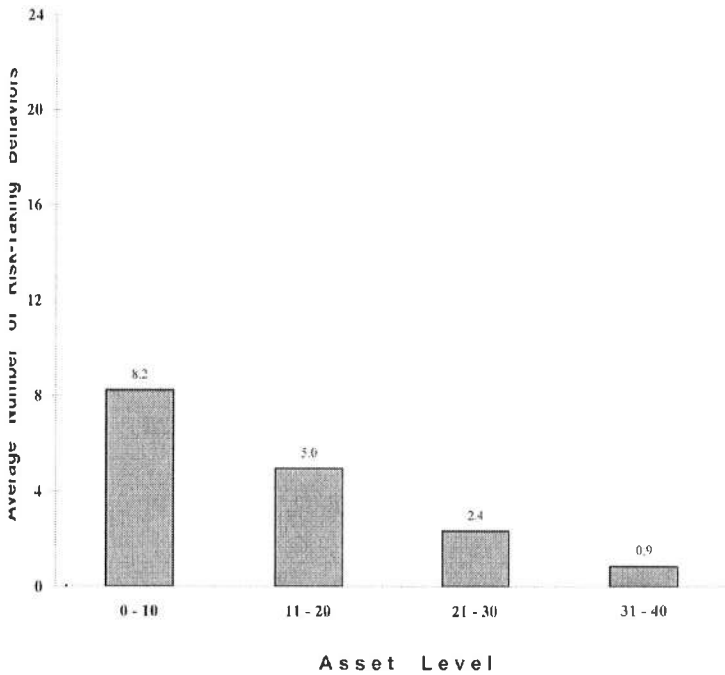
External Asset	Total Sample	Gender		Grade						
		M	F	6	7	8	9	10	11	12
Support										
1. Family support	65	67	64	76	68	64	62	62	65	68
2. Positive family communication	24	23	24	37	27	24	25	22	19	20
3. Other adult relationships	41	39	43	33	38	39	42	42	45	45
4. Caring neighborhood	31	32	30	43	36	33	31	30	26	26
5. Caring school climate	26	24	27	40	27	26	23	25	24	24
6. Parent involvement in schooling	27	28	26	43	37	31	28	21	18	15
Empowerment										
7. Community values youth	20	19	19	36	24	21	19	18	13	15
8. Youth as resources	24	25	24	38	24	23	26	22	21	24
9. Service to others	47	43	51	51	42	47	47	48	48	50
10. Safety	50	58	43	39	46	47	47	52	55	61
Boundaries and Expectations										
11. Family boundaries	41	39	43	52	43	40	40	41	42	35
12. School boundaries	46	46	46	68	57	46	42	42	42	39
13. Neighborhood boundaries	44	43	45	62	51	45	45	38	40	36
14. Adult role models	23	21	25	30	22	22	22	21	25	25
15. Positive peer influence	57	56	58	80	66	56	55	49	53	54
16. High expectations	46	46	46	63	49	52	42	44	41	39
Constructive Use of Time										
17. Creative activities	17	15	19	18	16	20	18	14	16	17
18. Youth programs	48	50	46	43	42	44	49	49	54	51
19. Religious community	49	45	53	52	51	52	53	47	46	43
20. Time at home	47	47	46	58	51	48	45	46	42	41

Percent of Youth Reporting Each Internal Asset, by Gender and Grade

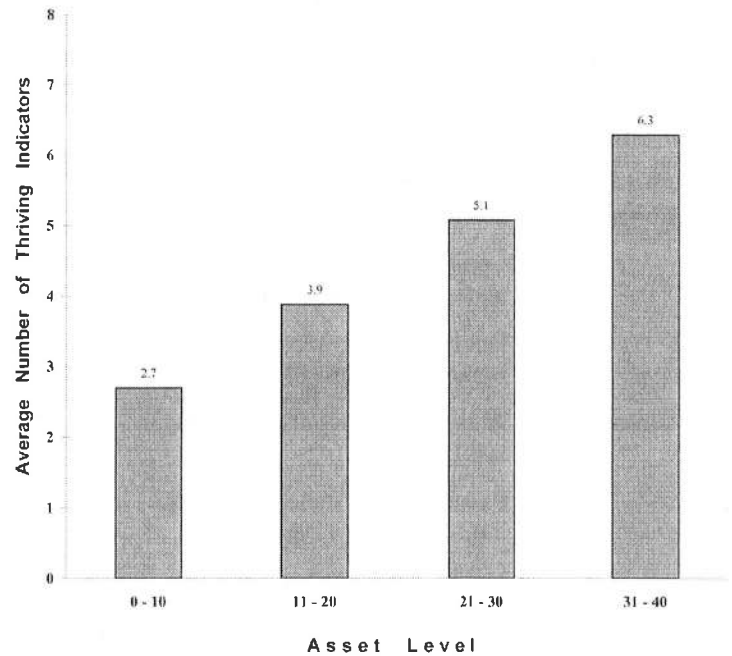
Internal Asset	Total Sample	Gender		Grade						
		M	F	6	7	8	9	10	11	12
Commitment to Learning										
21. Achievement motivation	63	57	69	71	60	60	62	62	69	63
22. School engagement	52	47	57	63	46	48	53	49	56	58
23. Homework	41	36	46	37	40	34	42	43	48	41
24. Bonding to school	47	45	49	58	49	40	50	47	45	46
25. Reading for pleasure	22	14	30	24	24	20	23	20	23	24
Positive Values										
26. Caring	51	42	59	65	50	49	49	47	51	57
27. Equality and social justice	52	43	61	66	55	54	50	48	50	53
28. Integrity	68	61	75	63	61	63	67	69	75	78
29. Honesty	65	58	71	77	62	59	63	65	69	72
30. Responsibility	64	59	68	73	58	56	63	62	70	75
31. Restraint	38	34	42	66	54	43	38	31	26	21
Social Competencies										
32. Planning and decision-making	30	27	33	35	27	24	30	31	35	35
33. Interpersonal competence	44	30	56	50	42	42	42	42	46	48
34. Cultural competence	42	36	49	50	48	43	41	42	37	41
35. Resistance skills	40	36	43	48	40	38	40	37	43	41
36. Peaceful conflict resolution	34	30	38	48	31	27	37	35	37	39
Positive Identity										
37. Personal power	43	44	42	40	36	35	42	44	51	54
38. Self-esteem	51	55	48	50	48	52	52	47	53	56
39. Sense of purpose	59	64	54	57	56	56	59	56	64	65
40. Positive view of personal future	71	70	71	76	70	69	70	69	72	74

The Challenge

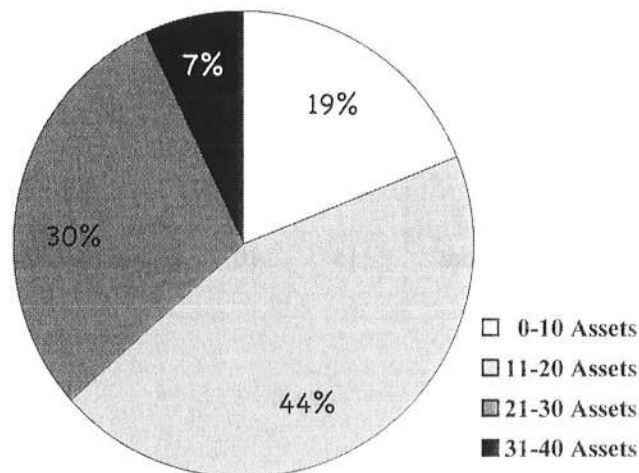
Average Number of 24 Risk-Taking Behaviors, by Asset Level



Average Number of 8 Thriving Indicators, by Asset Level



The percentage of youth who experience each of the four levels of assets.



Percent of Youth Reporting Each of 15 Other Risk-Taking Behaviors, by Gender and Grade

Risk-Taking Behavior		Total	Gender		Grade						
Category	Definition	Sample	M	F	6	7	8	9	10	11	12
Sexual Intercourse	Has had sexual intercourse one or more times	35	37	33	8	17	25	32	43	53	60
Anti-Social Behavior	Shoplifted once or more in the last 12 months	23	26	20	14	23	27	24	23	21	21
	Committed vandalism once or more in the last 12 months	21	27	14	11	21	26	20	21	18	18
	Got into trouble with police once or more in the last 12 months	29	34	24	25	25	31	29	32	29	31
Violence	Hit someone once or more in the last 12 months	40	47	33	42	46	48	42	36	32	28
	Physically hurt someone once or more in the last 12 months	19	25	13	18	24	23	20	17	13	14
	Used a weapon to get something from a person once or more in the last 12 months	5	7	3	4	6	6	5	5	3	4
	Been in a group fight once or more in the last 12 months	22	29	16	24	29	25	22	21	17	17
	Carried a weapon for protection once or more in the last 12 months	15	23	8	10	15	20	14	15	13	15
	Threatened physical harm to someone once or more in the last 12 months	37	42	32	24	37	45	38	39	34	29
School Truancy	Skipped school once or more in the last four weeks	21	21	22	13	16	22	24	22	23	24
Gambling	Gambled once or more in the last 12 months	26	37	16	26	26	30	23	25	25	31
Eating Disorder	Has engaged in bulimic or anorexic behavior	17	14	19	18	17	16	16	20	15	16
Depression	Felt sad or depressed most or all of the time in the last month	16	12	20	15	16	16	17	20	14	13
Attempted Suicide	Has attempted suicide one or more times	15	10	20	14	16	17	15	15	14	15

Percent of Youth Reporting Each of 9 Substance Use Related Risk-Taking Behaviors, by Gender and Grade

Risk-Taking Behavior		Total	Gender		Grade						
Category	Definition	Sample	M	F	6	7	8	9	10	11	12
Alcohol	Used alcohol once or more in the last 30 days	28	27	29	7	17	23	27	33	35	45
	Got drunk once or more in the last two weeks	17	18	16	6	12	14	16	21	20	27
Tobacco	Smoked cigarettes once or more in the last 30 days	11	11	10	4	8	8	10	11	12	18
	Used smokeless tobacco once or more in the last 12 months	4	7	2	1	2	5	3	4	7	7
Inhalants	Sniffed or inhaled substances to get high once or more in the last 12 months	9	9	10	9	16	14	8	7	4	3
Marijuana	Used marijuana once or more in the last 12 months	26	27	24	3	11	22	27	36	33	37
Other Drug Use	Used other illicit drugs once or more in the last 12 months*	6	7	5	3	4	6	7	6	8	9
Driving and Alcohol	Drove after drinking once or more in the last 12 months	10	11	9	1	3	6	7	11	15	25
	Rode (once or more in the last 12 months) with a driver who had been drinking	37	34	40	18	35	41	36	37	38	40

* Includes cocaine, LSD, PCP or angel dust, heroin, and amphetamines

Percent of Youth Reporting Each of the 40 Assets in Eastern Racine County and Western Racine County

Asset Name	East of I 94	West of I 94	Asset Name	East of I 94	West of I 94
1. Family support	65	66	21. Achievement motivation	63	66
2. Positive family communication	24	26	22. School engagement	52	61
3. Other adult relationships	41	49	23. Homework	41	39
4. Caring neighborhood	31	36	24. Bonding to school	47	56
5. Caring school climate	26	31	25. Reading for pleasure	22	24
6. Parent involvement in schooling	27	24	26. Caring	51	46
7. Community values youth	20	20	27. Equality and social justice	52	45
8. Youth as resources	24	27	28. Integrity	68	67
9. Service to others	47	53	29. Honesty	65	65
10. Safety	50	62	30. Responsibility	64	64
11. Family boundaries	41	43	31. Restraint	38	38
12. School boundaries	46	48	32. Planning and decision-making	30	32
13. Neighborhood boundaries	44	46	33. Interpersonal competence	44	42
14. Adult role models	23	25	34. Cultural competence	42	31
15. Positive peer influence	57	67	35. Resistance skills	40	38
16. High expectations	46	49	36. Peaceful conflict resolution	34	42
17. Creative activities	17	19	37. Personal power	43	43
18. Youth programs	48	61	38. Self-esteem	51	49
19. Religious community	49	49	39. Sense of purpose	59	63
20. Time at home	47	45	40. Positive view of personal future	71	72