

GOLD MEDAL LOFTS

REHABILITATION OF THE HISTORICAL GOLD MEDAL FURNITURE COMPANY.
 RACINE, WISCONSIN



MILWAUKEE | MADISON | TUCSON | CHICAGO



225 E. Michigan St., Suite 110
 Milwaukee, WI 53202
 T: 414-501-5810
 F: 414-755-0617

GOLD MEDAL LOFTS

1701 Packard Avenue
 Racine, WI 53403

PROJECT NUMBER 172792.00

PROJECT

SEAL

CIVIL/LANDSCAPE

ARCHITECTURAL

APPROVALS LOG

SIGMA GROUP

1300 W CANAL ST.
 MILWAUKEE, WI 53233
 PH (414) 943-4200

ENGBERG ANDERSON

300 E. BUFFALO ST.
 SUITE 600
 MILWAUKEE, WI 53202
 PH (414) 944-0000
 FX (414) 944-9100

- D100 BASEMENT DEMOLITION PLAN
- D110 FIRST FLOOR DEMOLITION PLAN
- D120 SECOND FLOOR DEMOLITION PLAN
- D130 THIRD FLOOR DEMOLITION PLAN
- D140 ROOF DEMOLITION PLAN
- D200 DEMOLITION ELEVATIONS
- D201 DEMOLITION ELEVATIONS

INCLUDED

- A000 ARCHITECTURAL SITE PLAN
- A100 BASEMENT PLAN
- A110 FIRST FLOOR PLAN
- A120 SECOND FLOOR PLAN
- A130 THIRD FLOOR PLAN
- A140 ROOF PLAN
- A210 BASEMENT PLAN - RCP
- A220 FIRST FLOOR PLAN - RCP
- A230 SECOND FLOOR PLAN - RCP
- A240 THIRD FLOOR PLAN - RCP
- A300 ENLARGED UNIT PLANS
- A301 ENLARGED UNIT PLANS
- A302 ENLARGED UNIT PLANS
- A303 ENLARGED UNIT PLANS
- A304 ENLARGED UNIT PLANS
- A305 ENLARGED UNIT PLANS
- A306 ENLARGED UNIT PLANS
- A307 ENLARGED UNIT PLANS
- A308 ENLARGED UNIT PLANS
- A309 ENLARGED UNIT PLANS
- A310 ENLARGED UNIT PLANS
- A311 ENLARGED UNIT PLANS
- A312 ENLARGED UNIT PLANS
- A313 ENLARGED UNIT PLANS

- A400 ELEVATIONS
- A401 ELEVATIONS
- A402 ELEVATIONS
- A601 INTERIOR WALLS, FLOOR/CEILING ASSEMBLIES

INCLUDED

ISSUED FOR:
 HISTORIC 10-02-2018

REVISION FOR: DATE
 NO. DESCRIPTION

PRELIMINARY - NOT FOR CONSTRUCTION

DRAWN BY KB

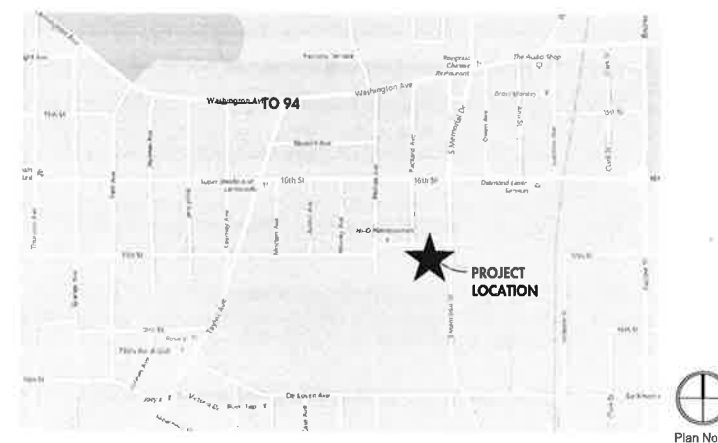
CHECKED BY JMR

TITLE SHEET

T101

DRAWINGS CONSULTANTS

SITE LOCATION MAP



LOCATION MAP



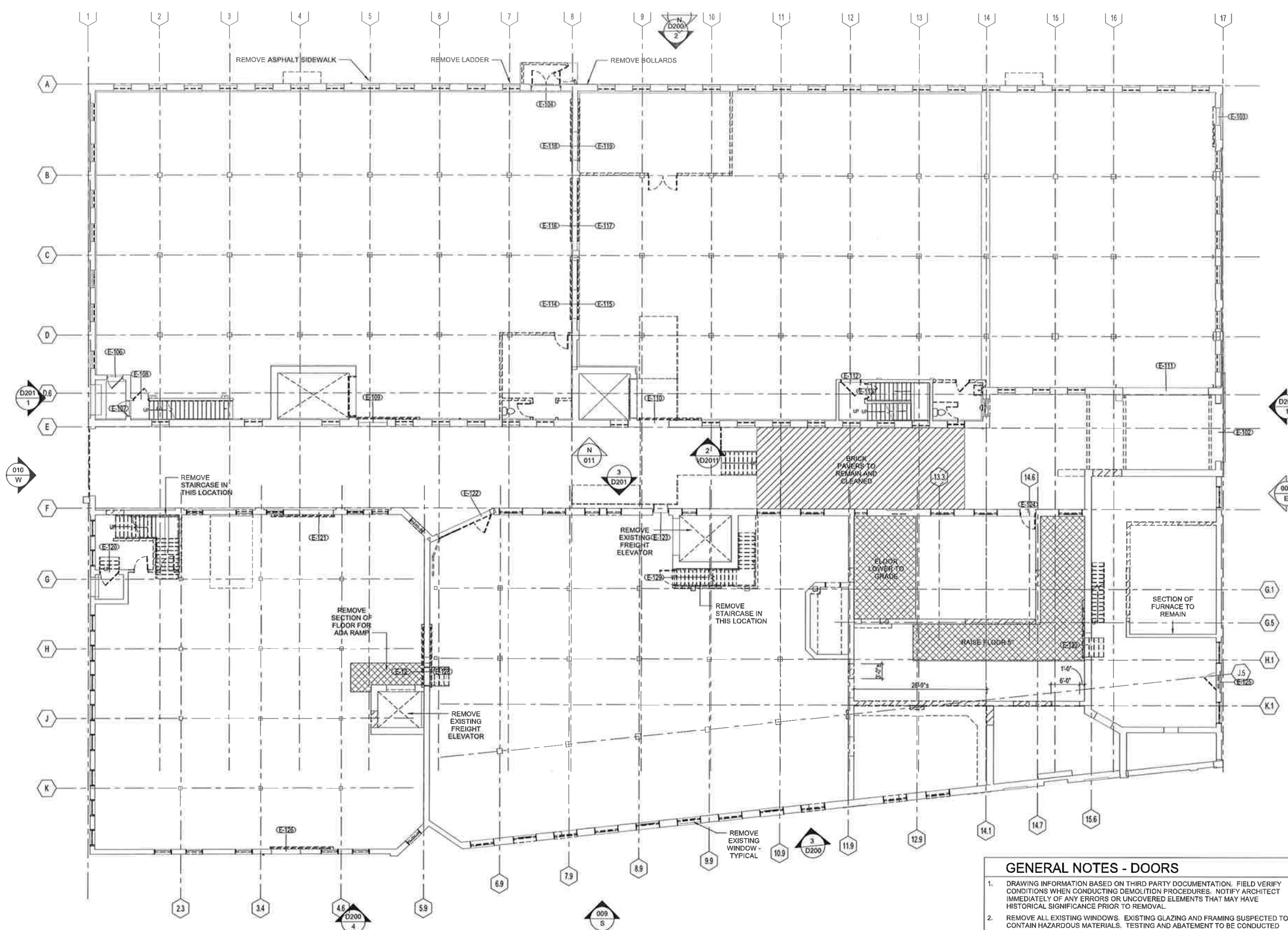
GOLD MEDAL LOFTS

1701 Packard Avenue
Racine, WI 53403

PROJECT NUMBER 172792.00

ISSUED FOR:
HISTORIC 10-02-2018

REVISION FOR:
NO. DESCRIPTION DATE



1 LEVEL 1 DEMOLITION PLAN
SCALE: 1/8" = 1'-0"

- GENERAL NOTES - DOORS**
- DRAWING INFORMATION BASED ON THIRD PARTY DOCUMENTATION. FIELD VERIFY CONDITIONS WHEN CONDUCTING DEMOLITION PROCEDURES. NOTIFY ARCHITECT IMMEDIATELY OF ANY ERRORS OR UNCOVERED ELEMENTS THAT MAY HAVE HISTORICAL SIGNIFICANCE PRIOR TO REMOVAL.
 - REMOVE ALL EXISTING WINDOWS. EXISTING GLAZING AND FRAMING SUSPECTED TO CONTAIN HAZARDOUS MATERIALS. TESTING AND ABATEMENT TO BE CONDUCTED DURING THE REMOVAL OF THE WINDOWS AND GLAZING SYSTEMS.
 - EXISTING MASONRY SHALL BE LIGHTLY CLEANED WITH THE LEAST HARMFUL METHOD AS POSSIBLE. IT IS NOT NECESSARY FOR THE MASONRY TO BE RETURNED TO ORIGINAL COLOR AND STATE. SUMMIT CLEANING METHOD INCLUDING EQUIPMENT, NOZZLE PRESSURE AND CLEANING CHEMICAL MAKE UP FOR ARCHITECT REVIEW AND SUBMISSION FOR APPROVAL TO THE STATE OF WISCONSIN HISTORIC PRESERVATION OFFICER IN CHARGE OF THIS PROJECT.
 - SALVAGE AND STORE ON SITE MATERIAL AND HISTORIC ELEMENTS INDICATED ON DRAWINGS. IF DAMAGE OCCURS DURING REMOVAL, IT WILL BE THE RESPONSIBILITY OF THE CONTRACTOR TO REPAIR THE DAMAGED ITEM IN A MANNER APPROVED BY THE ARCHITECT.
 - SEE DEMOLITION ELEVATIONS FOR SCOPE REGARDING CUTTING NEW OPENINGS IN EXISTING MASONRY, SALVAGE BRICK FOR REUSE. TOOTH IN THE EXPOSED EDGES OF THE MASONRY OPENING. SALVAGE THE REST OF THE MASONRY FOR USE IN REPLACEMENT OF DAMAGED MASONRY ON THE FACADE OF THE BUILDING.
 - REMOVE EXISTING DOOR AND HARDWARE. SALVAGE AND STORE FOR POTENTIAL REUSE AS A FEATURE IN THE PROJECT.

DRAWN BY KB
CHECKED BY JMR

FIRST FLOOR DEMOLITION PLAN

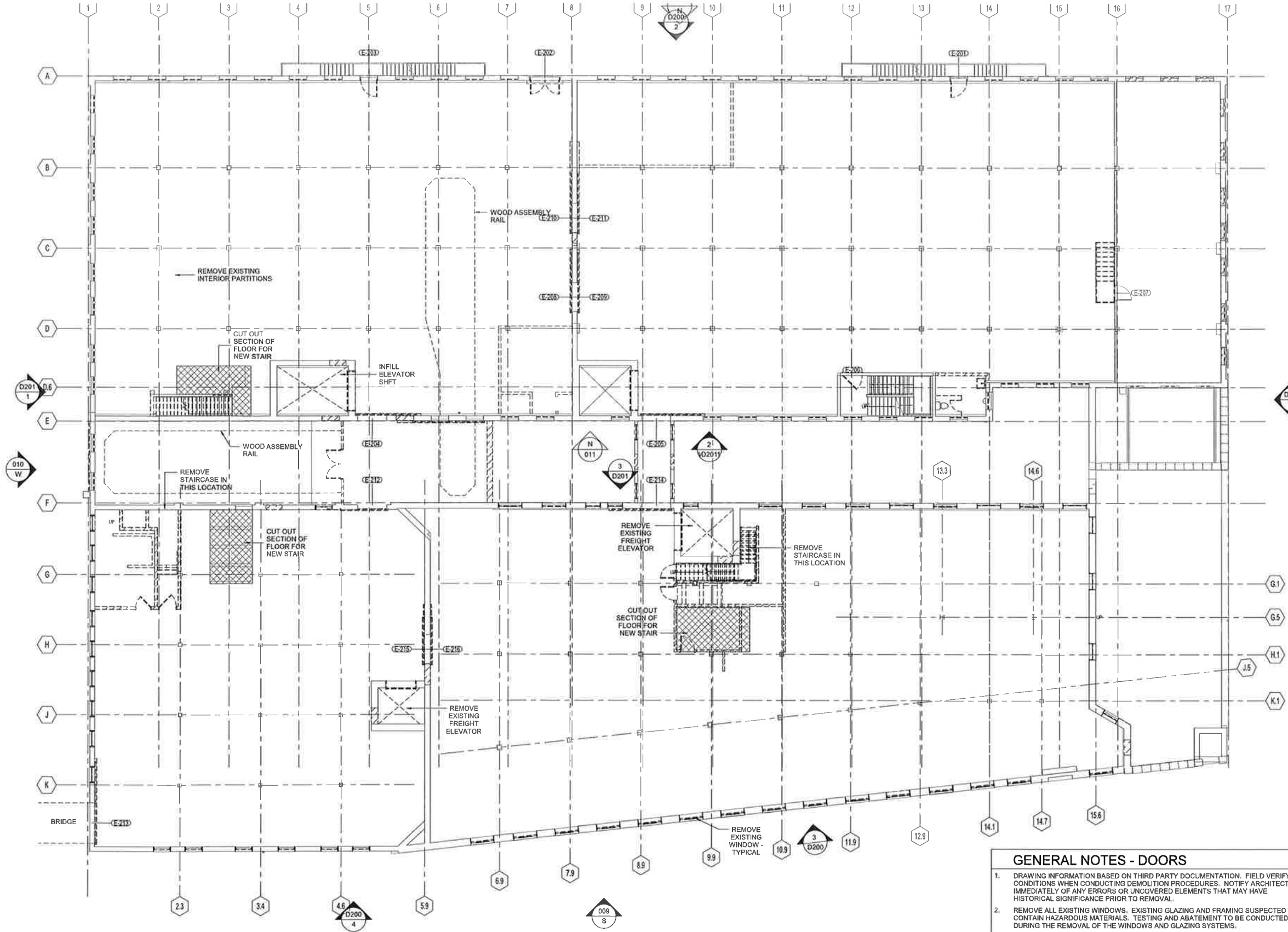
GOLD MEDAL LOFTS

1701 Packard Avenue
Racine, WI 53403

PROJECT NUMBER 172792.00

ISSUED FOR:
HISTORIC 10-02-2018

REVISION FOR: DATE
NO. DESCRIPTION



1 LEVEL 2 DEMOLITION PLAN
SCALE: 1/8" = 1'-0"

- GENERAL NOTES - DOORS**
- DRAWING INFORMATION BASED ON THIRD PARTY DOCUMENTATION. FIELD VERIFY CONDITIONS WHEN CONDUCTING DEMOLITION PROCEDURES. NOTIFY ARCHITECT IMMEDIATELY OF ANY ERRORS OR UNCOVERED ELEMENTS THAT MAY HAVE HISTORICAL SIGNIFICANCE PRIOR TO REMOVAL.
 - REMOVE ALL EXISTING WINDOWS, EXISTING GLAZING AND FRAMING SUSPECTED TO CONTAIN HAZARDOUS MATERIALS. TESTING AND ABATEMENT TO BE CONDUCTED DURING THE REMOVAL OF THE WINDOWS AND GLAZING SYSTEMS.
 - EXISTING MASONRY SHALL BE LIGHTLY CLEANED WITH THE LEAST HARMFUL METHOD AS POSSIBLE. IT IS NOT NECESSARY FOR THE MASONRY TO BE RETURNED TO ORIGINAL COLOR AND STATE. SUMMIT CLEANING METHOD INCLUDING EQUIPMENT, NOZZLE PRESSURE AND CLEANING CHEMICAL MAKE UP FOR ARCHITECT REVIEW AND SUBMISSION FOR APPROVAL TO THE STATE OF WISCONSIN HISTORIC PRESERVATION OFFICER IN CHARGE OF THIS PROJECT.
 - SALVAGE AND STORE ON SITE MATERIAL AND HISTORIC ELEMENTS INDICATED ON DRAWINGS. IF DAMAGE OCCURS DURING REMOVAL, IT WILL BE THE RESPONSIBILITY OF THE CONTRACTOR TO REPAIR THE DAMAGED ITEM IN A MANNER APPROVED BY THE ARCHITECT.
 - SEE DEMOLITION ELEVATIONS FOR SCOPE REGARDING CUTTING NEW OPENINGS IN EXISTING MASONRY, SALVAGE BRICK FOR REUSE. TOOTH IN THE EXPOSED EDGES OF THE MASONRY OPENING. SALVAGE THE REST OF THE MASONRY FOR USE IN REPLACEMENT OF DAMAGED MASONRY ON THE FACADE OF THE BUILDING.
 - REMOVE EXISTING DOOR AND HARDWARE. SALVAGE AND STORE FOR POTENTIAL REUSE AS A FEATURE IN THE PROJECT.

DRAWN BY KB
CHECKED BY JMR

**SECOND FLOOR
DEMOLITION PLAN**

D120

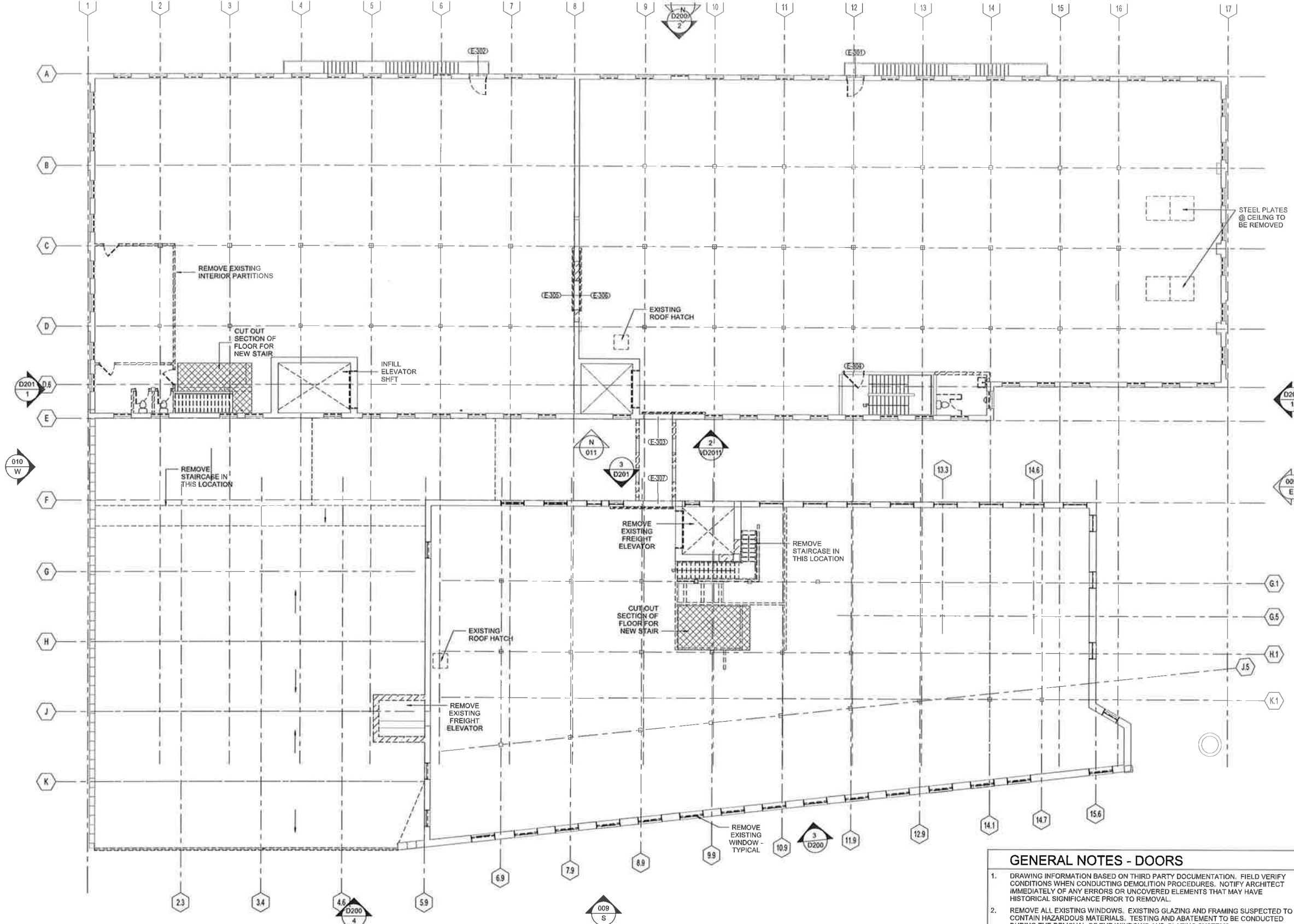
GOLD MEDAL LOFTS

1701 Packard Avenue
Racine, WI 53403

PROJECT NUMBER 172792.00

ISSUED FOR:
HISTORIC 10-02-2018

REVISION FOR:
NO. DESCRIPTION DATE

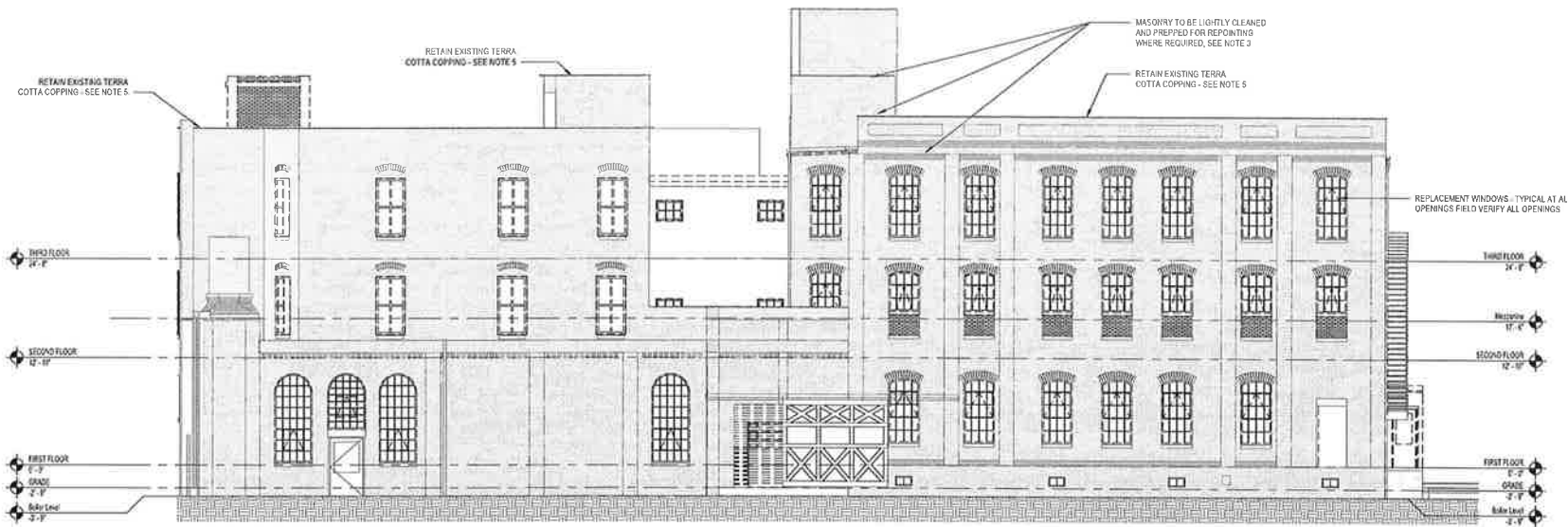


1 LEVEL 3 DEMOLITION PLAN
SCALE: 1/8" = 1'-0"

- GENERAL NOTES - DOORS**
- DRAWING INFORMATION BASED ON THIRD PARTY DOCUMENTATION. FIELD VERIFY CONDITIONS WHEN CONDUCTING DEMOLITION PROCEDURES. NOTIFY ARCHITECT IMMEDIATELY OF ANY ERRORS OR UNCOVERED ELEMENTS THAT MAY HAVE HISTORICAL SIGNIFICANCE PRIOR TO REMOVAL.
 - REMOVE ALL EXISTING WINDOWS, EXISTING GLAZING AND FRAMING SUSPECTED TO CONTAIN HAZARDOUS MATERIALS. TESTING AND ABATEMENT TO BE CONDUCTED DURING THE REMOVAL OF THE WINDOWS AND GLAZING SYSTEMS.
 - EXISTING MASONRY SHALL BE LIGHTLY CLEANED WITH THE LEAST HARMFUL METHOD AS POSSIBLE. IT IS NOT NECESSARY FOR THE MASONRY TO BE RETURNED TO ORIGINAL COLOR AND STATE. SUMMIT CLEANING METHOD INCLUDING EQUIPMENT, NOZZLE PRESSURE AND CLEANING CHEMICAL MAKE UP FOR ARCHITECT REVIEW AND SUBMISSION FOR APPROVAL TO THE STATE OF WISCONSIN HISTORIC PRESERVATION OFFICER IN CHARGE OF THIS PROJECT.
 - SALVAGE AND STORE ON SITE MATERIAL AND HISTORIC ELEMENTS INDICATED ON DRAWINGS. IF DAMAGE OCCURS DURING REMOVAL, IT WILL BE THE RESPONSIBILITY OF THE CONTRACTOR TO REPAIR THE DAMAGED ITEM IN A MANNER APPROVED BY THE ARCHITECT.
 - SEE DEMOLITION ELEVATIONS FOR SCOPE REGARDING CUTTING NEW OPENINGS IN EXISTING MASONRY, SALVAGE BRICK FOR REUSE, TOOTH IN THE EXPOSED EDGES OF THE MASONRY OPENING. SALVAGE THE REST OF THE MASONRY FOR USE IN REPLACEMENT OF DAMAGED MASONRY ON THE FACADE OF THE BUILDING.
 - REMOVE EXISTING DOOR AND HARDWARE. SALVAGE AND STORE FOR POTENTIAL REUSE AS A FEATURE IN THE PROJECT.

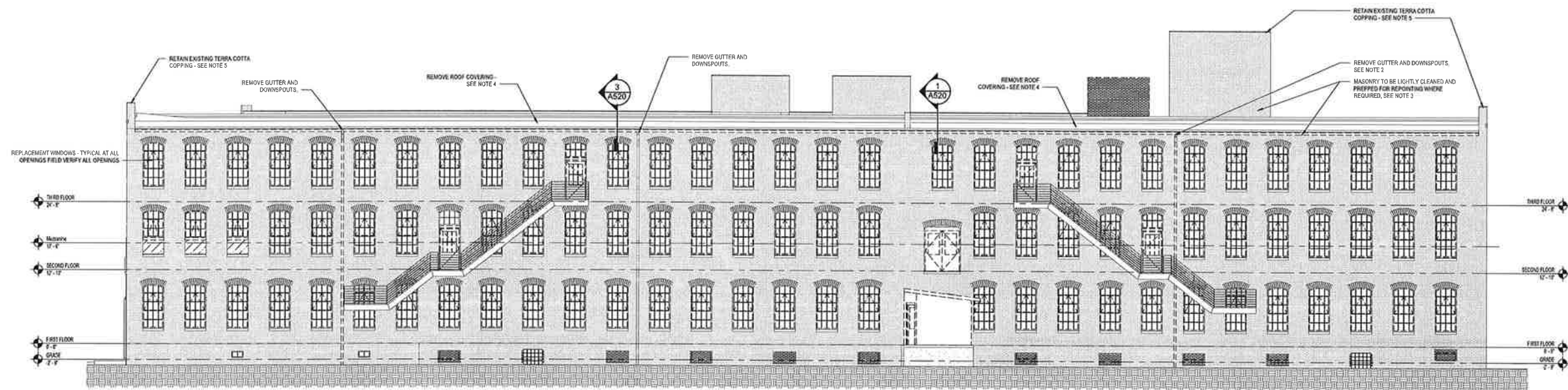
DRAWN BY KB
CHECKED BY JMR

**THIRD FLOOR
DEMOLITION PLAN**

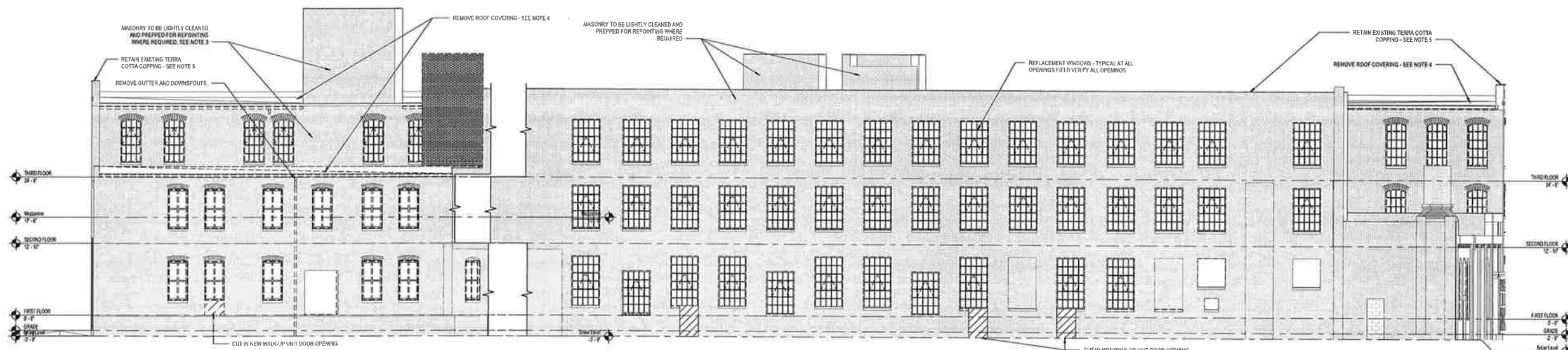


1 EAST DEMOLITION/REPOINTING ELEVATION
SCALE: 1/8" = 1'-0"

EXISTING BRICK TO BE REPAIRED AND/OR TUCK-POINTED BUT NOT CLEANED

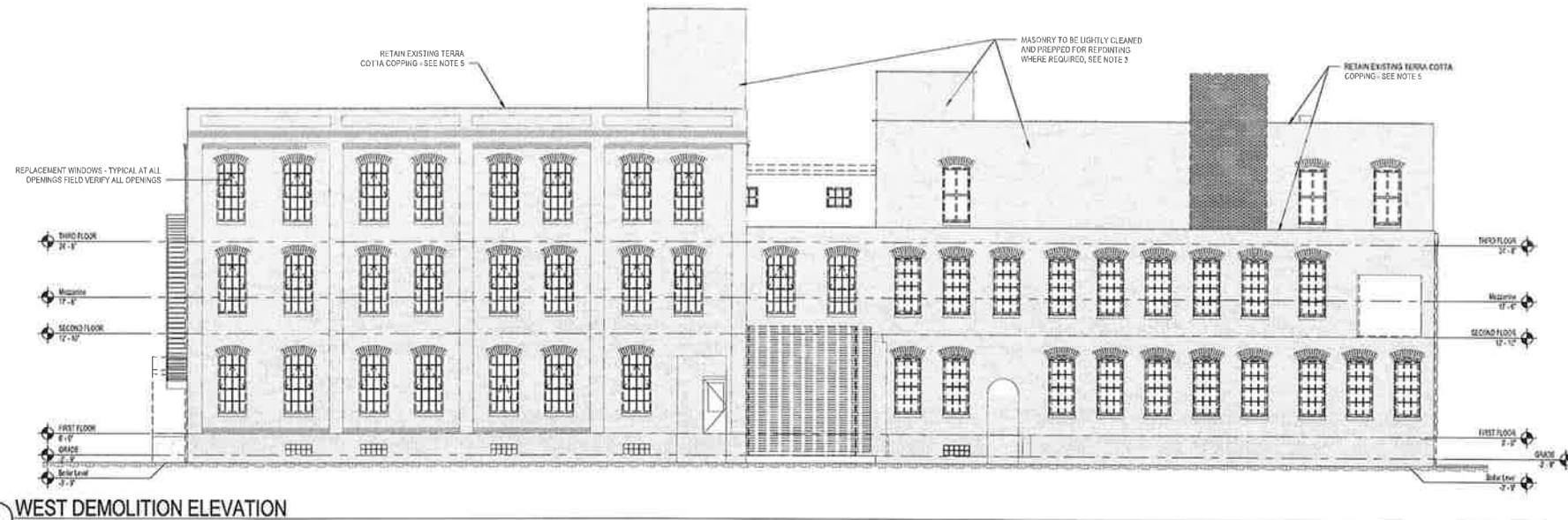


2 NORTH DEMOLITION/REPOINTING ELEVATION
SCALE: 1/8" = 1'-0"

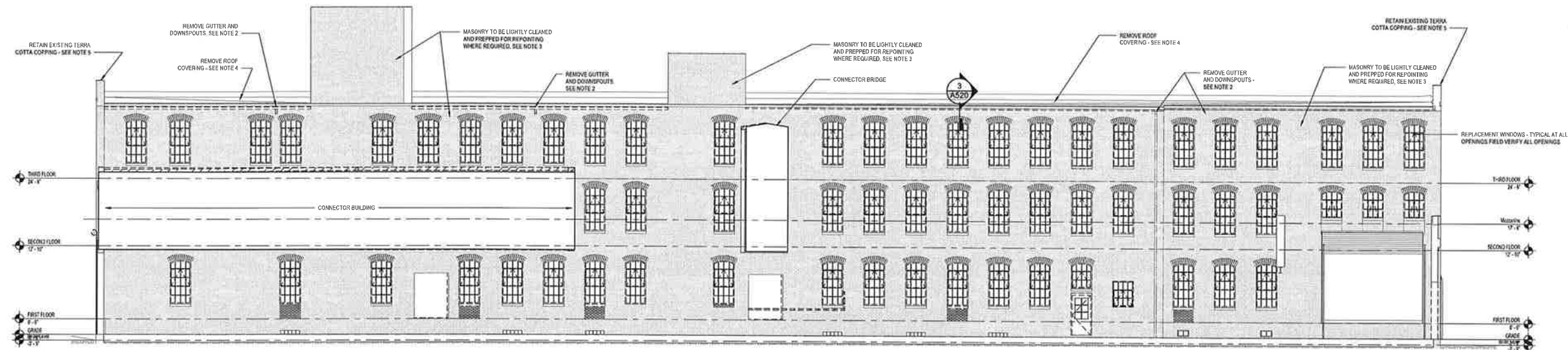


4 SOUTH ELEVATION DEMOLITION/REPOINTING ELEVATION - WEST END
SCALE: 1/8" = 1'-0"

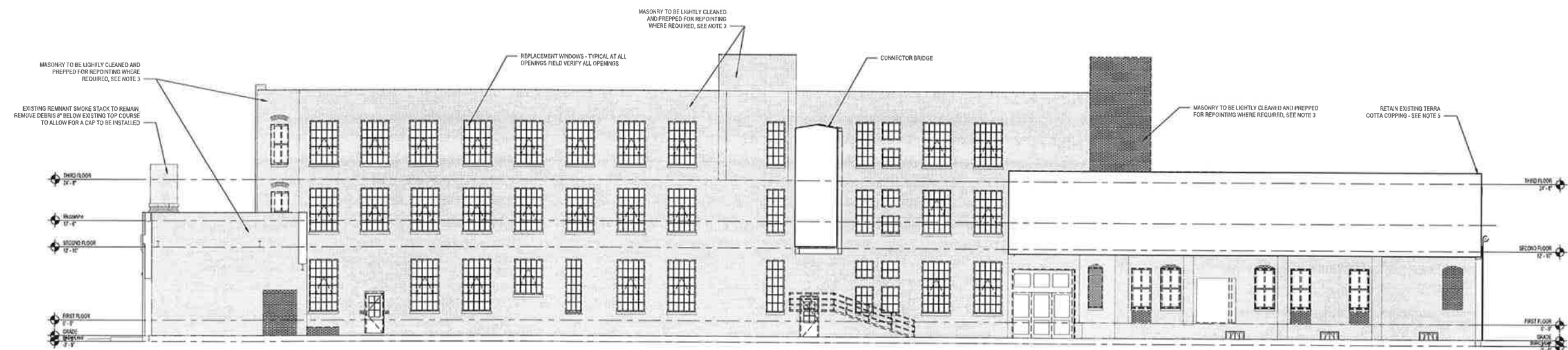
3 SOUTH DEMOLITION/REPOINTING ELEVATION - EAST END
SCALE: 1/8" = 1'-0"



1 WEST DEMOLITION ELEVATION
SCALE: 1/8" = 1'-0"



2 NORTH ALLEY COURT DEMOLITION ELEVATION
SCALE: 1/8" = 1'-0"



3 SOUTH ALLEY COURT ELEVATION DEMOLITION ELEVATION
SCALE: 1/8" = 1'-0"

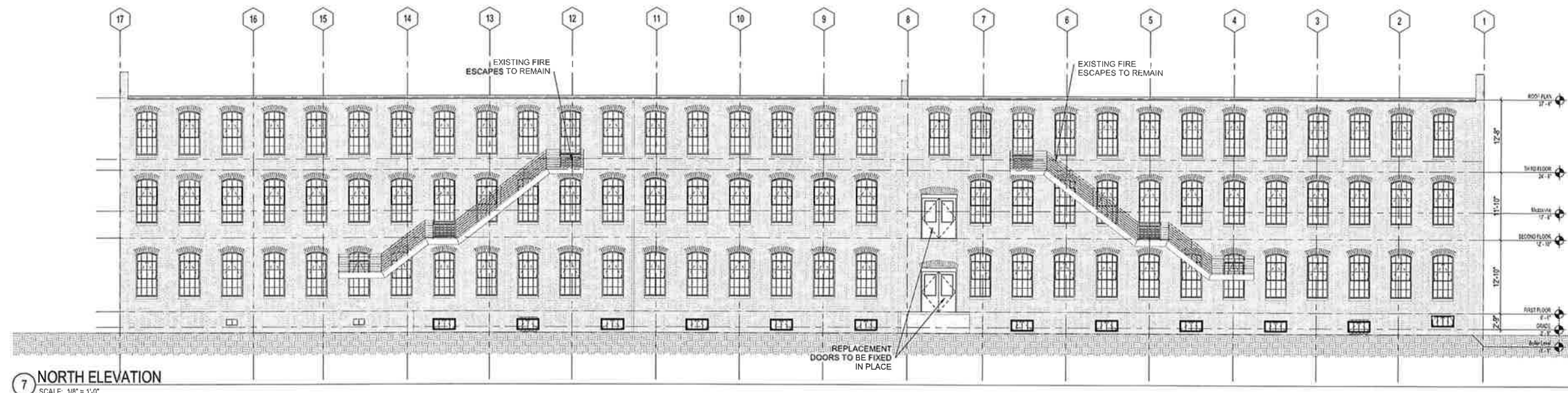
GOLD MEDAL LOFTS

1701 Packard Avenue
Racine, WI 53403

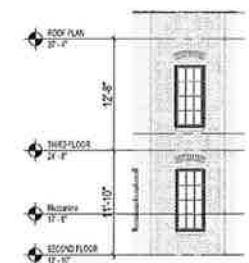
PROJECT NUMBER 172792.00

ISSUED FOR:
HISTORIC 10-02-2018

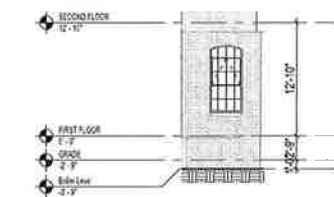
REVISION FOR:
NO. DESCRIPTION DATE



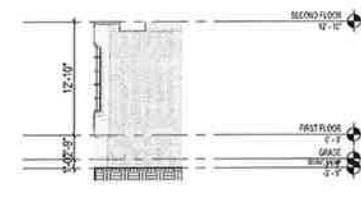
7 NORTH ELEVATION
SCALE: 1/8" = 1'-0"



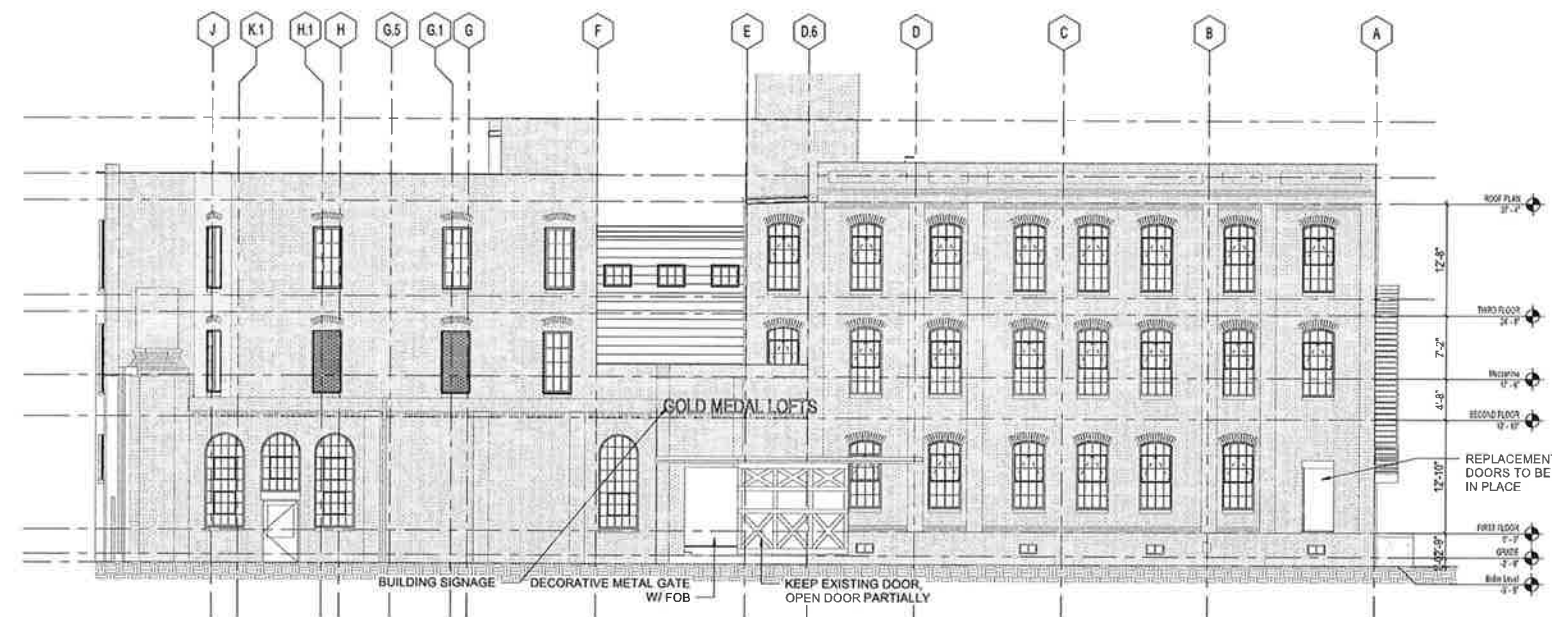
6 EAST OBLIQUE ELEVATION
SCALE: 1/8" = 1'-0"



5 SOUTH NOOK LOOKING WEST
SCALE: 1/8" = 1'-0"

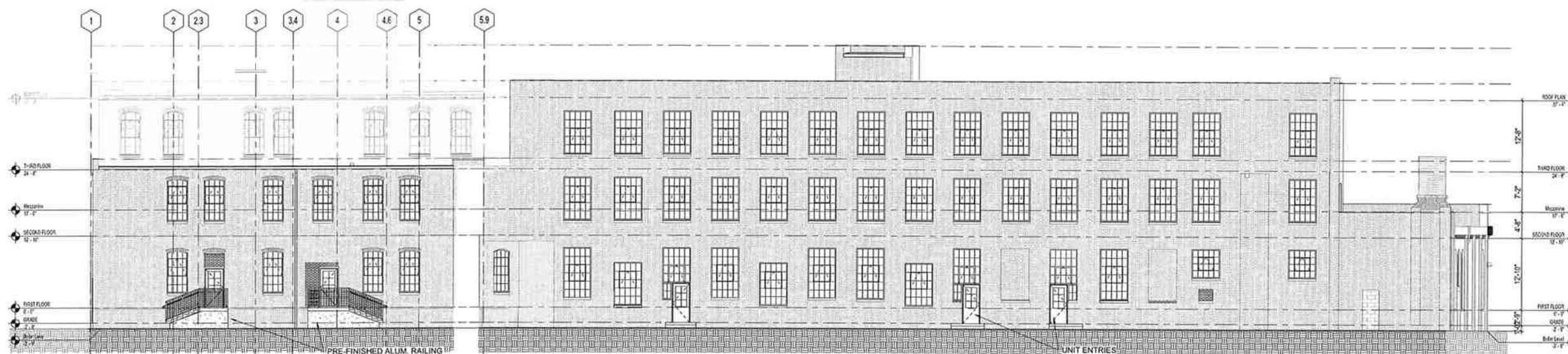


4 ALLEY NOOK LOOKING EAST
SCALE: 1/8" = 1'-0"



3 EAST ELEVATION
SCALE: 1/8" = 1'-0"

EXISTING BRICK TO BE REPAIRED AND/OR TUCK-POINTED BUT NOT CLEANED

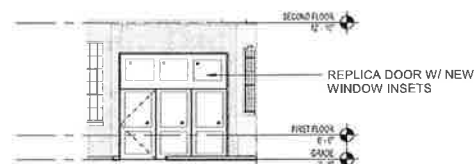


2 SOUTH ELEVATION - WEST

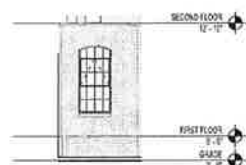
1 SOUTH ELEVATION - EAST

DRAWN BY KB
CHECKED BY JMR

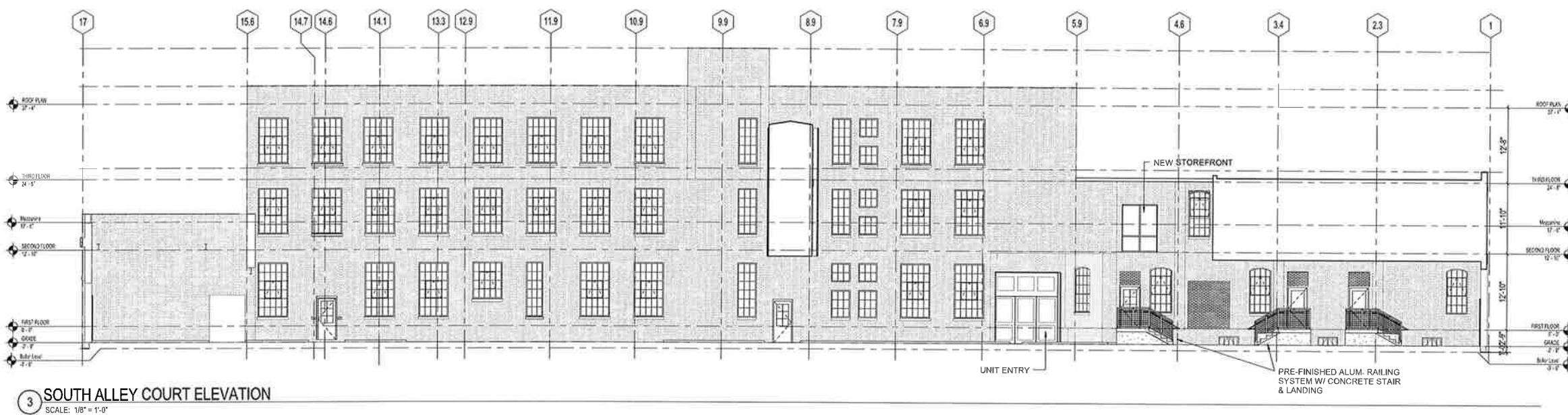
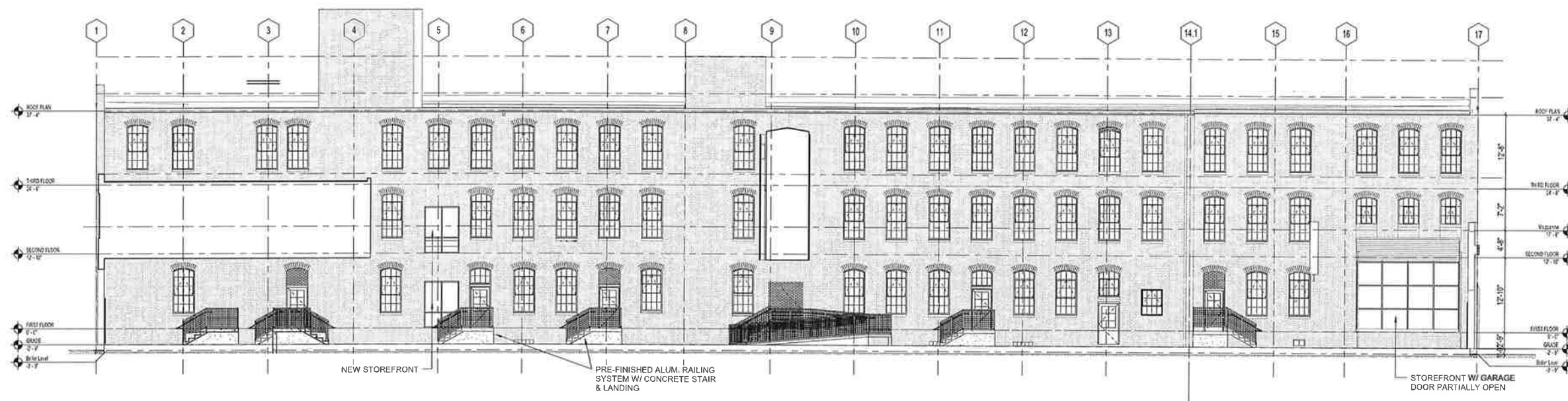
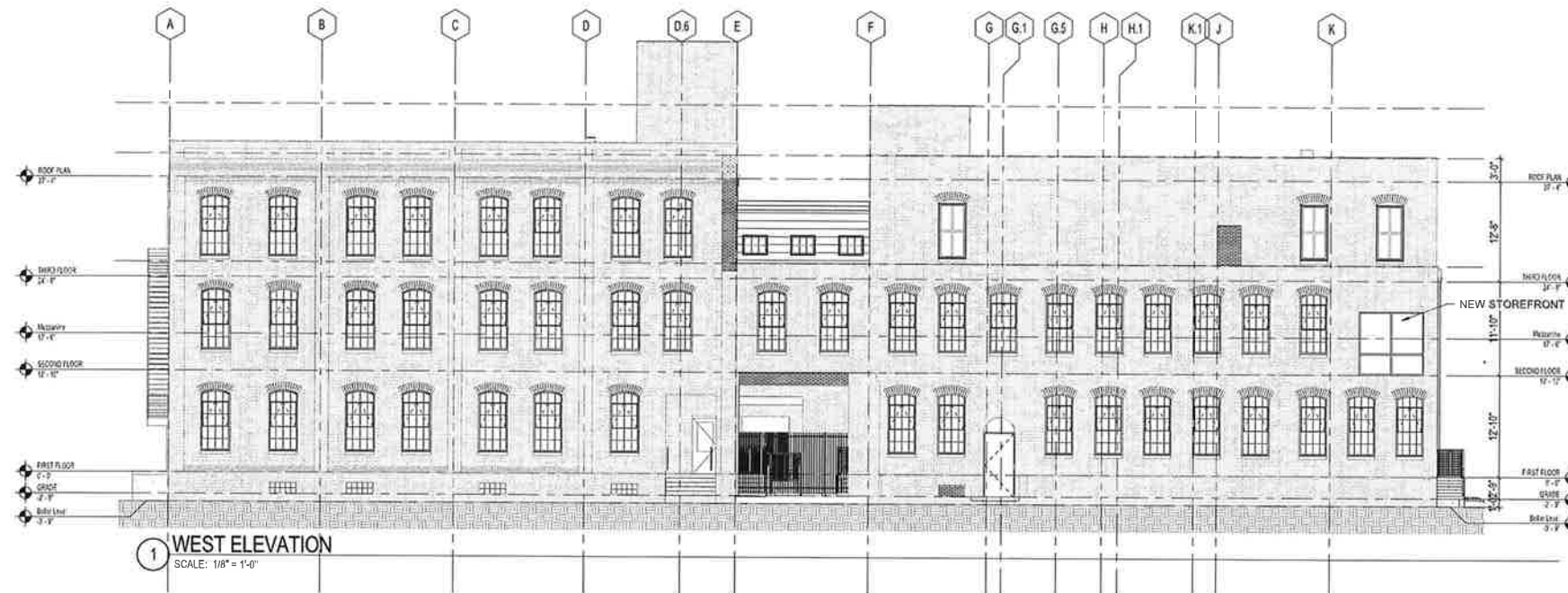
ELEVATIONS



5 NORTH ALLEY AMENITY SPACE
SCALE: 1/8" = 1'-0"



4 ALLEY NOOK LOOKING WEST
SCALE: 1/8" = 1'-0"



GOLD MEDAL LOFTS

1701 Packard Avenue
Racine, WI 53403

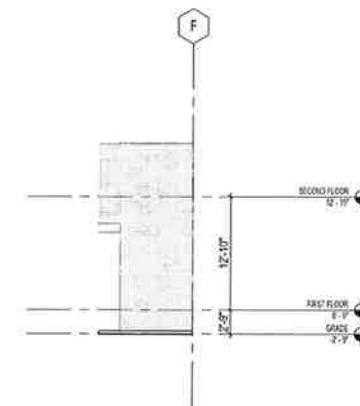
PROJECT NUMBER 172792.00

ISSUED FOR:
HISTORIC 10-02-2018

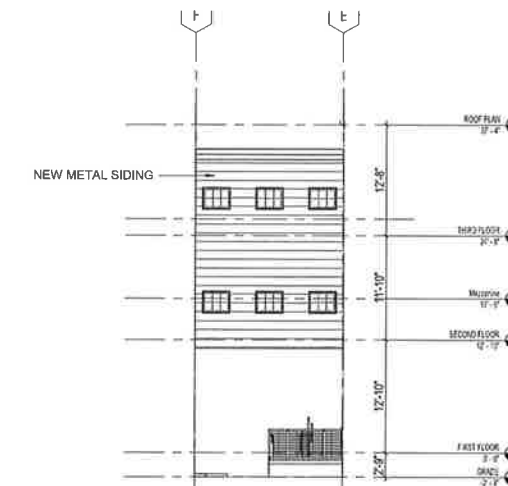
REVISION FOR:
NO. DESCRIPTION DATE

DRAWN BY Author
CHECKED BY Checker

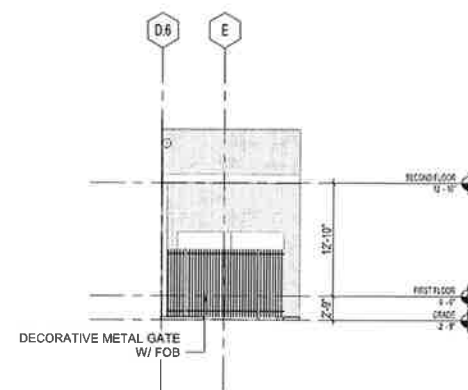
ELEVATIONS



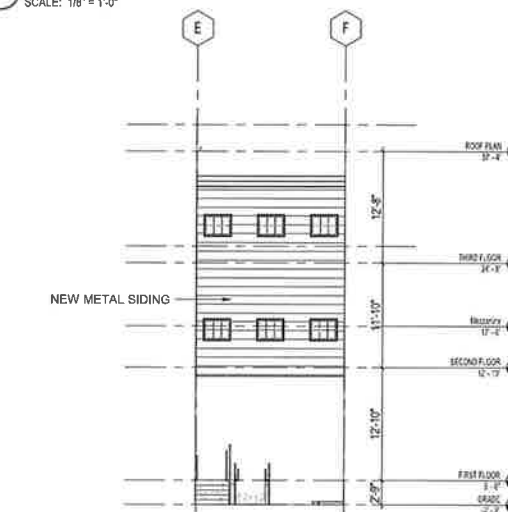
4 EAST ALLEY ELEVATION 1
SCALE: 1/8" = 1'-0"



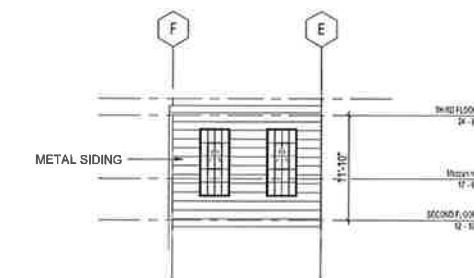
1 WEST ALLEY BRIDGE ELEVATION
SCALE: 1/8" = 1'-0"



5 EAST ALLEY ELEVATION 2
SCALE: 1/8" = 1'-0"



2 EAST ALLEY BRIDGE ELEVATION
SCALE: 1/8" = 1'-0"



3 WEST ALLEY ELEVATION
SCALE: 1/8" = 1'-0"