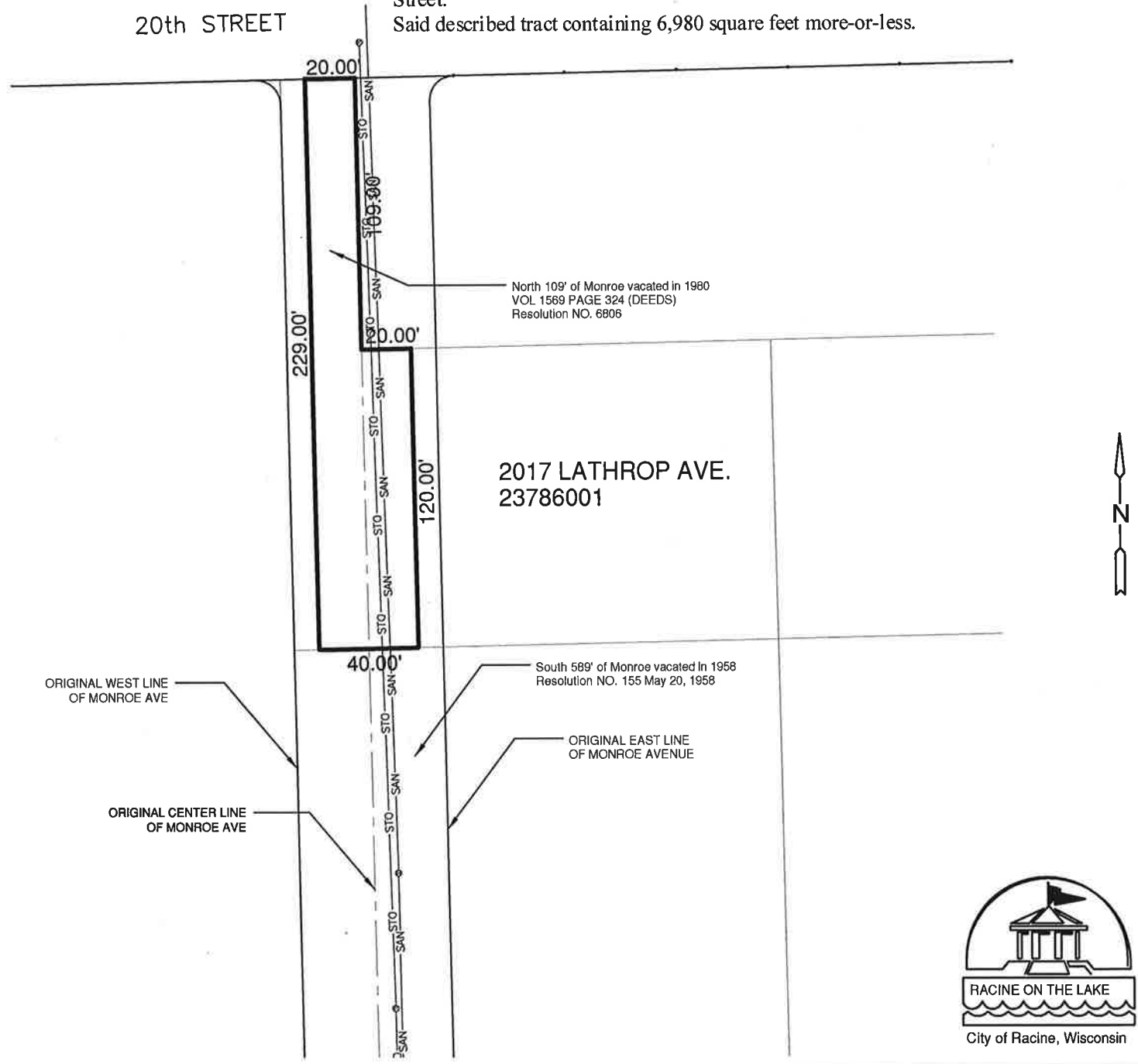


# SEWER EASEMENT

That part of Walker Addition, a recorded plat in the City of Racine, Racine County, Wisconsin that is part of the Northeast 1/4 of Section 19 Township 3 North, Range 23 East described as follows:

A 40 foot wide sewer easement centered along the original center line of vacated Monroe Avenue 229 feet south of the south line of 20<sup>th</sup> Street to 109 feet south of the south line of 20<sup>th</sup> Street and a 20 foot wide sewer easement west of the original center line of vacated Monroe Avenue and 109 feet south of the south line of 20<sup>th</sup> Street to the south line of 20<sup>th</sup> Street.

Said described tract containing 6,980 square feet more-or-less.



## CITY ENGINEER'S OFFICE RACINE, WISCONSIN

DOCUMENT NUMBER : X	REVISIONS : X	REVISIONS : X
APPROVED : J.C.R. DATE : X	DRAWN : T.J.J. DATE : 07/26/13	Scale : 1"=60'
RESOLUTION NO : X	(NE 1/4 SEC 19 T3N R23E) U-07	
Parcel Identification Number : 23786001	CODE : X	FILE NUMBER : EP-398