
Industrial Roofing Services, Inc.

13000 West Silver Spring Drive
Butler, Wisconsin 53007
Phone: (262) 432-0500
Fax: (262) 432-0504
www.irsroof.com

July 20, 2017

Mr. Peter C. Eggert, P.E.
City of Racine Engineering Department
730 Washington Avenue
Racine, WI 53403

Subject: Parking lot grading and storm water
Roosevelt Elementary School
IRS Job No. 16293

Dear Mr. Eggert:

As previously discussed and per the attached plan, Racine Unified School District (RUSD) plans to pulverize and slightly expand the vehicle parking lot at Roosevelt Elementary School. The parking lot currently drains to the large field to the west of the lot. We feel that this is the best practice method to maintain and treat the storm water on site and would like to maintain this drainage pattern. We have been advised that this drainage pattern deviates from the City of Racine requirement that storm sewer be added in any lot replacements over 10,000 square feet. The original lot is roughly 11,000 sf and in order to improve traffic flow and parking the proposal is to add an additional 3,000 sf.

We are requesting a waiver of this requirement in order to allow the storm water to drain to the open field rather than capturing it in the City of Racine storm water system.

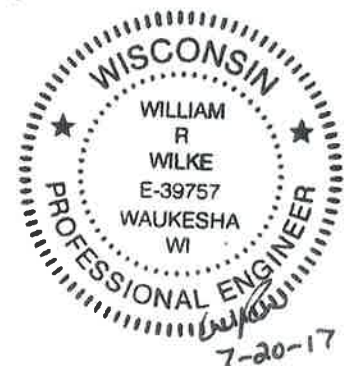
If you should have any questions regarding the above information, please feel free to contact me.

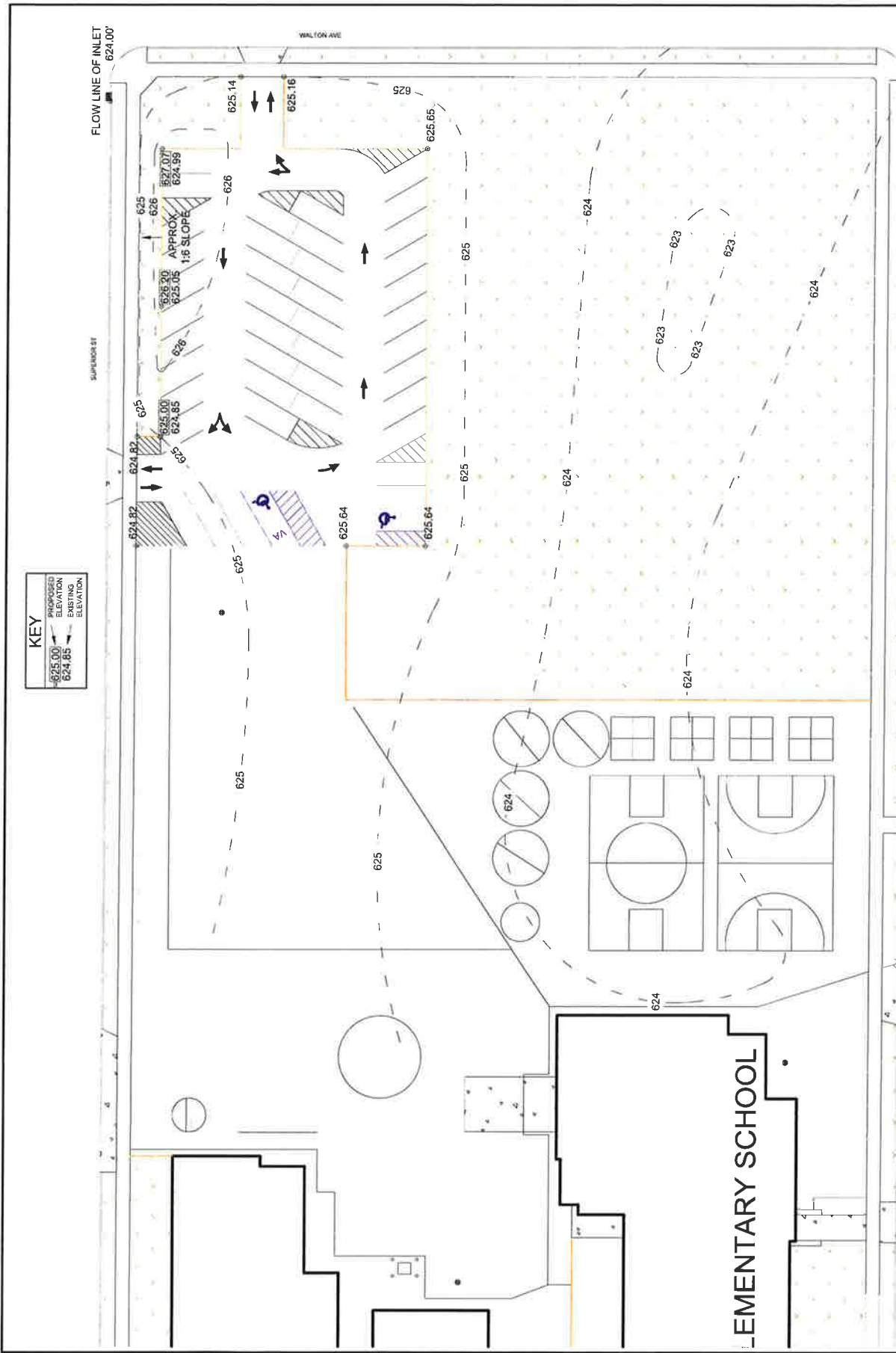
Sincerely yours,
INDUSTRIAL ROOFING SERVICES, INC.


W. Ryan Wilke, P.E.
Senior Project Manager

Cc: Michael Hennessy, RUSD - Assistant Director of Facilities
Bryan Arnold, RUSD - Director, Buildings and Grounds

Enclosures

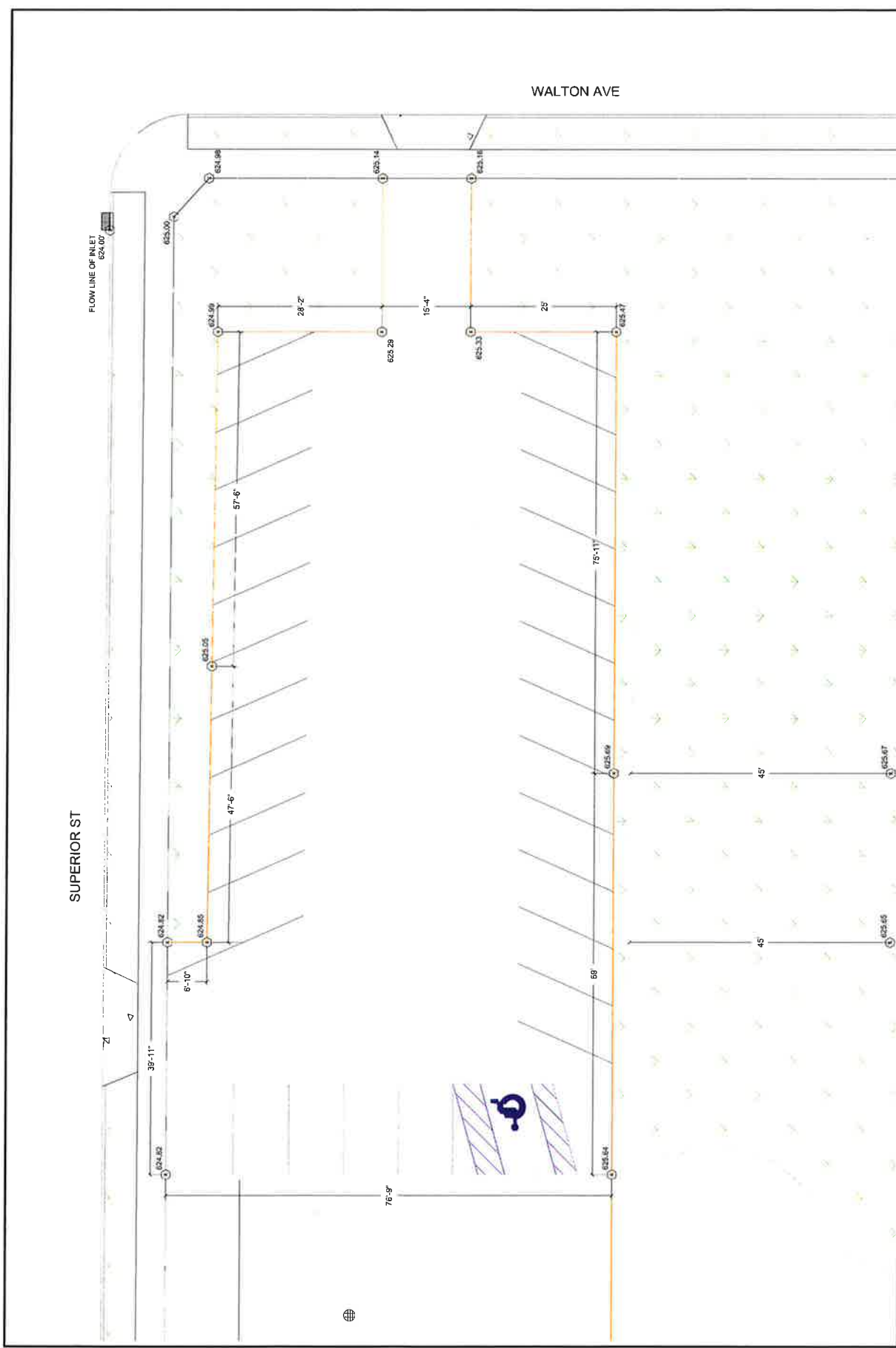




KEY

$\overline{-625.00}$	PROPOSED ELEVATION
$\overline{-624.85}$	EXISTING ELEVATION

CONSULTANT (DESIGN):		DATE:		SCALE:	
INDUSTRIAL ROOFING SERVICES, INC.		CAP 7/10/2007		1:8 = 1/8" = 1'	
13300 WEST VALLEY SPRING DRIVE - BUILDER WI 53007		N.T.S.		C-1.0	
PROJECT: 915 ROMAYNE AVE. BAKING, WI ROOSEVELT ELEMENTARY SCHOOL		PROJECT NO. 18293		SHEET NO. 1	
ELEVATION PLAN					
KEY: - HANDICAP PARKING - NEW ACCESSIBLE PARKING - CATCH BASIN - DRAINAGE INLET - CONCRETE - FIRE HYDRANT - ASHLAR - AREA SEPARATOR - CONCRETE - FIRE HYDRANT - DEBRIS BASKET - SINGLE HEAD LIGHT POLE - DOUBLE HEAD LIGHT POLE - LIGHT POLE WITH CONCRETE BASE - FENCE - EXISTING ASPHALT - CURB					



WALTON AVE

SUPERIOR ST

FLOW LINE OF INLET
624.00'

<p>CONSTRUCTION NOTES:</p> <ul style="list-style-type: none"> EXISTING LOT ELEVATIONS 	<p>DATE: 5/15/2017</p> <p>PROJECT: RASCHE UNIFIED SCHOOL DISTRICT 210 ROMANINE AVE., RACINE, WI ROOSEVELT ELEMENTARY SCHOOL</p>	<p>SCALE: N.T.S.</p>	<p>PROJECT NO: 10293</p>	<p>DATE: 5/15/2017</p>	<p>PROJECT NO: 10293</p>	<p>DATE: 5/15/2017</p>	<p>PROJECT NO: 10293</p>
	<p>INDUSTRIAL ROOFING SERVICES, INC. 1300 WEST SILVER SPRING DRIVE - BUTLER, WI 53027 PH: 262-738-1111 FAX: 262-738-1111</p>	<p>EXISTING LOT ELEVATIONS</p>	<p>SCALE: N.T.S.</p>	<p>PROJECT NO: 10293</p>	<p>DATE: 5/15/2017</p>	<p>PROJECT NO: 10293</p>	<p>DATE: 5/15/2017</p>

- NOTES:
- FORCE MAIN
 - SANITARY
 - DUB MCT
 - SMALL HOOD LIGHT POLE
 - DOUBLE HOOD LIGHT POLE
 - LIGHT POLE WITH CONCRETE BASE

- HANDICAP PARKING
- NEW ACCESSIBLE PARKING
- CATCH BASIN
- CONCRETE
- FINE HYDRANT

- ADA COMPLIANT
- ADA SIGNATURE

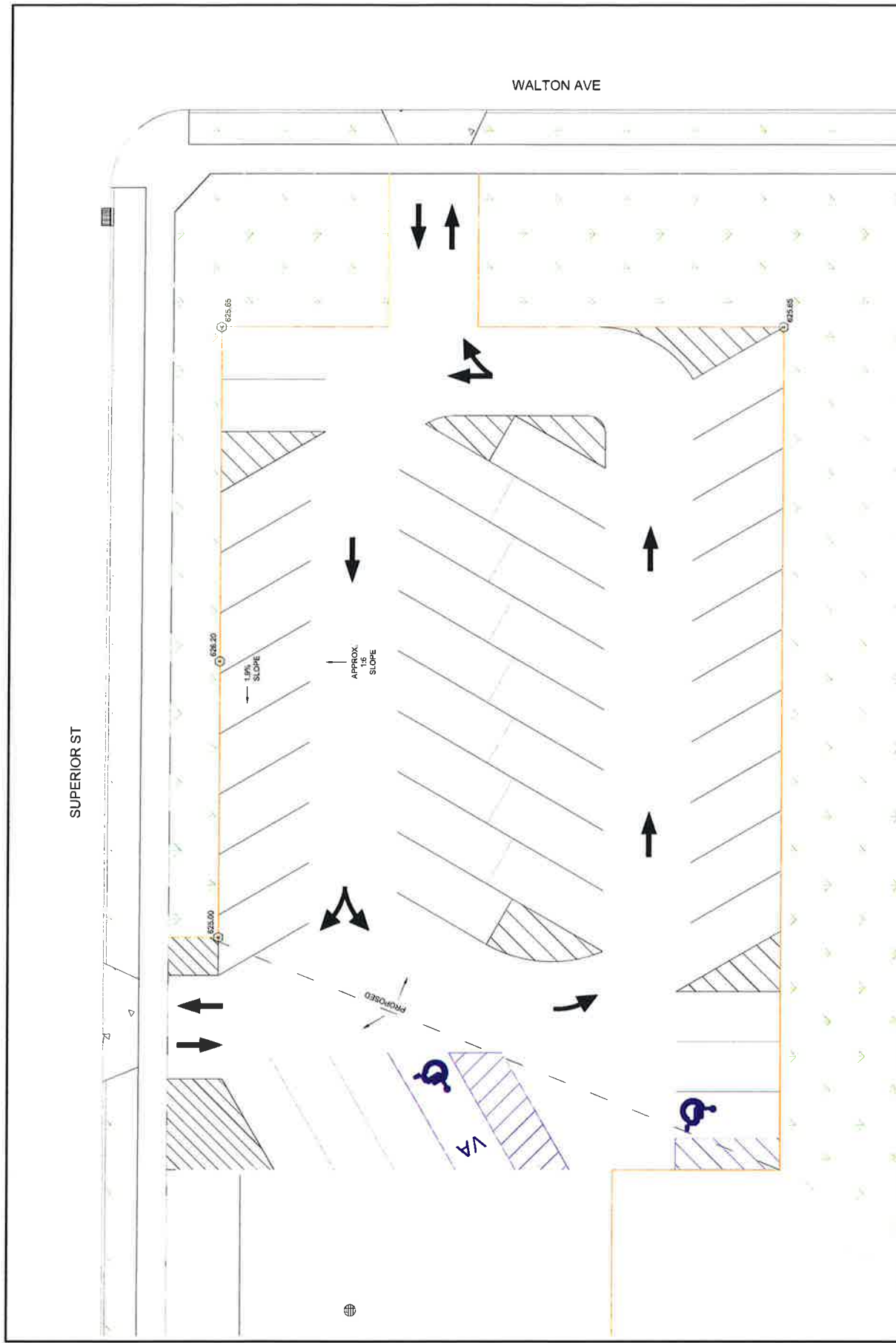
- CONCRETE
- FINE HYDRANT

- ADA COMPLIANT
- ADA SIGNATURE

- CONCRETE
- FINE HYDRANT

- CONCRETE
- FINE HYDRANT

- CONCRETE
- FINE HYDRANT



		<p>CONTRACTOR'S LIABILITY OF THE DRAWING THIS CONTRACTOR HAS MADE A CAREFUL REVIEW OF THE DRAWING</p>		<p>PROJECT: UNIFIED SCHOOL DISTRICT 315 ROMANNE AVE. MADISON, WI ROOSEVELT ELEMENTARY SCHOOL</p>		<p>DATE: 5/15/2017</p>		<p>PROJECT NO.: 10293</p>		<p>SCALE: N.T.S.</p>		<p>DATE: C1.2</p>		<p>PROJECT: PROPOSED STRIPING LAYOUT</p>	
<p>INDUSTRIAL ROOFING SERVICES, INC. 13000 WEST SILVER SPRING DRIVE, BUTLER, WI 53007 PHONE: (262) 781-1111 WWW.IRSINC.COM</p>		<p>UNIFIED SCHOOL DISTRICT 315 ROMANNE AVE. MADISON, WI ROOSEVELT ELEMENTARY SCHOOL</p>		<p>DATE: 5/15/2017</p>		<p>PROJECT NO.: 10293</p>		<p>SCALE: N.T.S.</p>		<p>DATE: C1.2</p>		<p>PROJECT: PROPOSED STRIPING LAYOUT</p>		<p>NOTES:</p>	
<p>LEGEND:</p>		<p>SYMBOLS:</p>		<p>NOTES:</p>		<p>SYMBOLS:</p>		<p>NOTES:</p>		<p>SYMBOLS:</p>		<p>NOTES:</p>		<p>SYMBOLS:</p>	