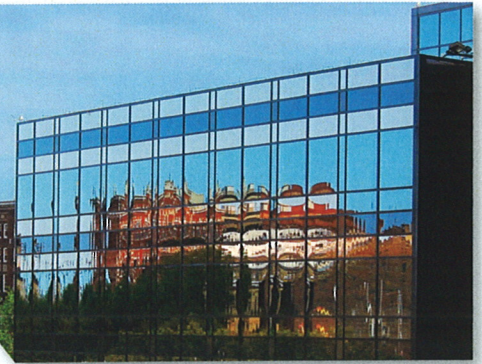


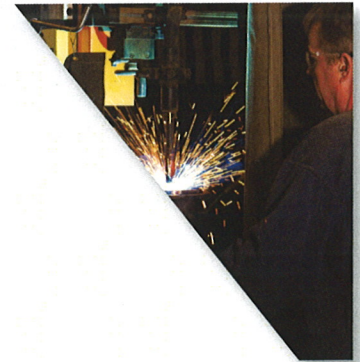
ABOUT US

RCEDC is the first point of contact for existing and prospective businesses completing expansions, relocations, financing, and workforce development projects in Racine County. Whether you are an existing business or new to Racine County, RCEDC's team of experts provides support and facilitates all phases of your development project. Working with our State, County and municipal partners, RCEDC connects you to the incentives necessary to make your project work in Racine County.



WHAT DOES YOUR BUSINESS NEED?

- | | |
|--|-------------------------------------|
| <i>Asset Acquisition</i> | <i>Land & Building Searches</i> |
| <i>Educational Partnership</i> | <i>Low Interest Financing</i> |
| <i>Expansion Support</i> | <i>Market Research</i> |
| <i>Export/Import Assistance</i> | <i>Peer Networking</i> |
| <i>Incentives</i> | <i>Relocation Assistance</i> |
| <i>International Business Assistance</i> | <i>Small Business Resources</i> |
| <i>Job Fairs</i> | <i>Workforce Assistance</i> |



CONTACT US

Expansion/Development

- Company Expansion Projects
- Site & Location Options
- State & Local Incentives
- Financing Options
- Strategic Resources
- Market Research

Laura Million
(262) 898-7530
LMillion@rcedc.org

Financing/Lending

- Up to 90% Financing
- Long Term, Low Interest Financing
- Real Estate / Equipment Purchases
- Building Construction
- Building Expansion/Renovations
- SBA 504 Lender throughout Wisconsin

Carolyn Engel
(262) 898-7420
Carolyn@blp504.org

Workforce Services

- Employer Recruitment Events
- Job Fairs
- Testing and Skills Assessments
- On-the-job Training Grants
- Workplace Excellence Series
- Educational Partnerships

Juan Gamez
(262) 638-6701
Juan.Gamez@racinecounty.com



Racine County Economic Development Corp.

Connecting Communities | Facilitating Jobs | Growing Businesses



**WE CAN
HELP YOUR BUSINESS**



Meeting the needs of Racine County businesses and prospective businesses seeking a location in the Chicago-Milwaukee Corridor.



**BUSINESS
SOLUTIONS**



**FINANCIAL
INCENTIVES**



**SITE
SELECTION**



**WORKFORCE
DEVELOPMENT**