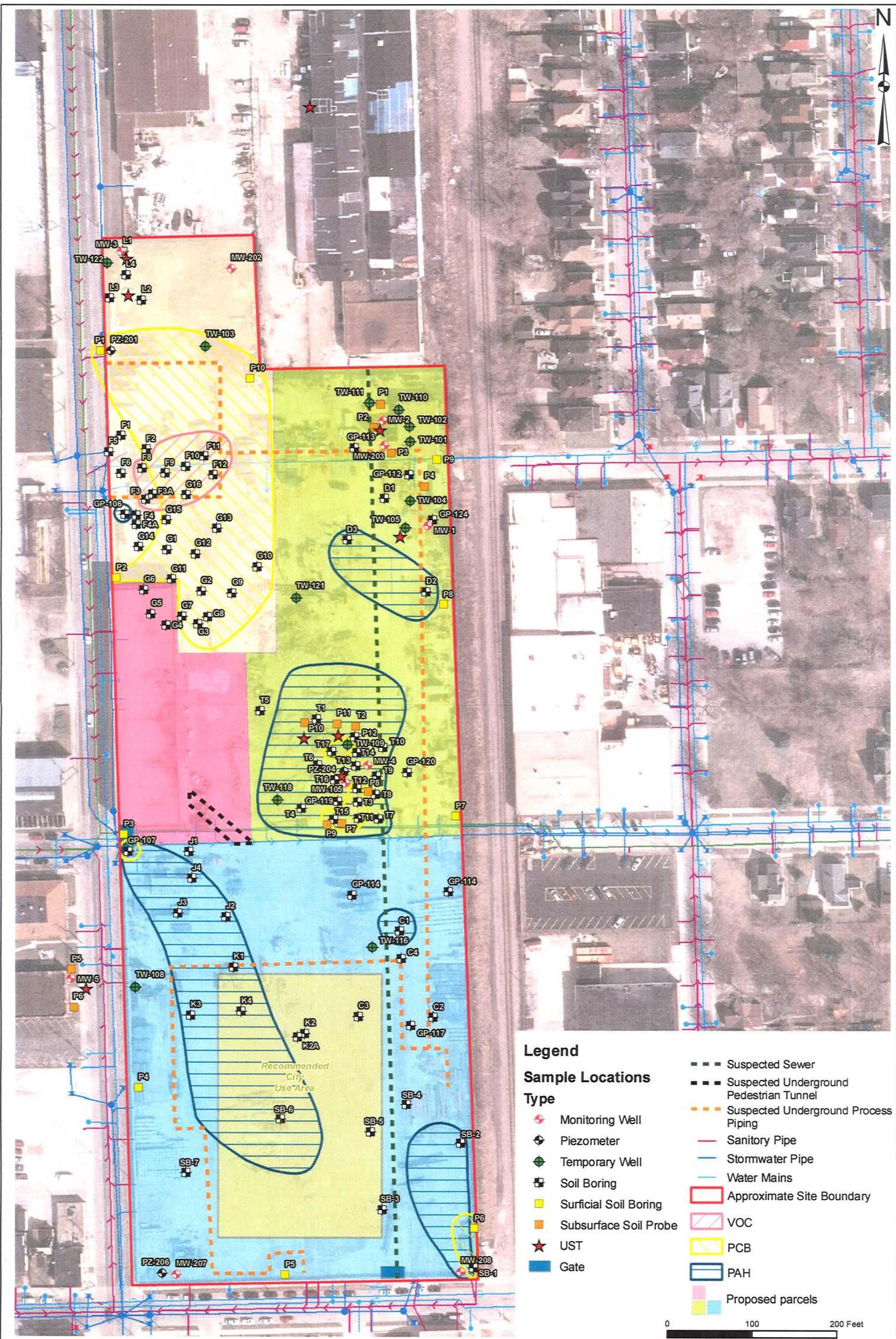


Path: G:\Projects\City of Racine\Map Documents\Steel Casting\Temp1\SteelCasting_DC.mxd



Legend

Sample Locations Type

- + Monitoring Well
- + Piezometer
- + Temporary Well
- + Soil Boring
- + Surficial Soil Boring
- + Subsurface Soil Probe
- ★ UST
- + Gate

- Suspected Sewer
- Suspected Underground Pedestrian Tunnel
- Suspected Underground Process Piping
- Sanitary Pipe
- Stormwater Pipe
- Water Mains
- Approximate Site Boundary
- VOC
- PCB
- PAH
- Proposed parcels

0 100 200 Feet



6737 West Washington Street
Suite 3440
West Allis, Wisconsin 53214
414.291.8840
FAX 414.291.8841

DSGN:	CHK:
DR: DH	APVD:

Former Racine Steel Castings
1425 N Memorial Drive
Racine, WI

Figure 1
Soil Exceeding
Direct Contact
Standard

SCALE	1 inch = 100 feet
DWG	
DATE	MAY 2013
PROJ	
NO.	