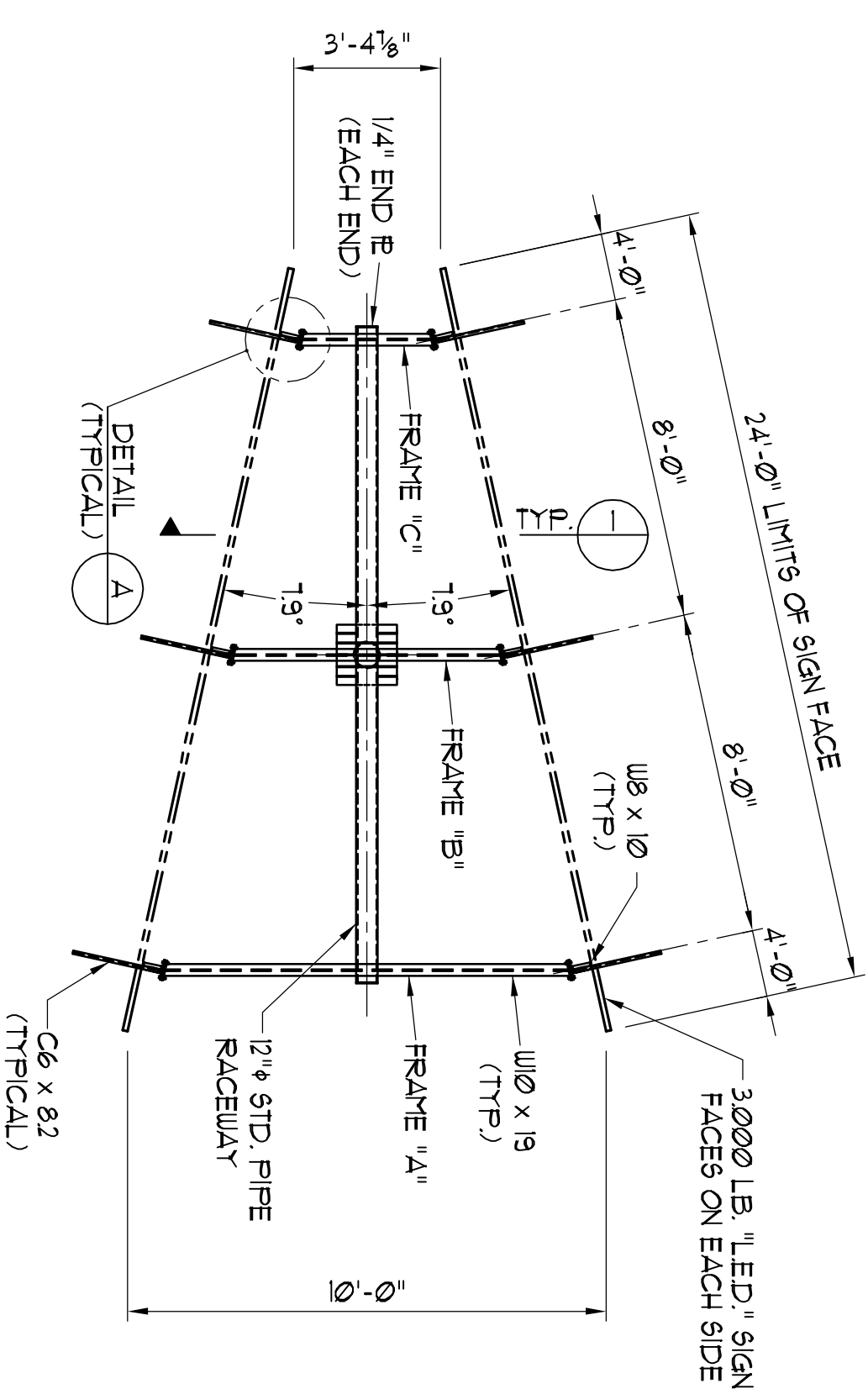
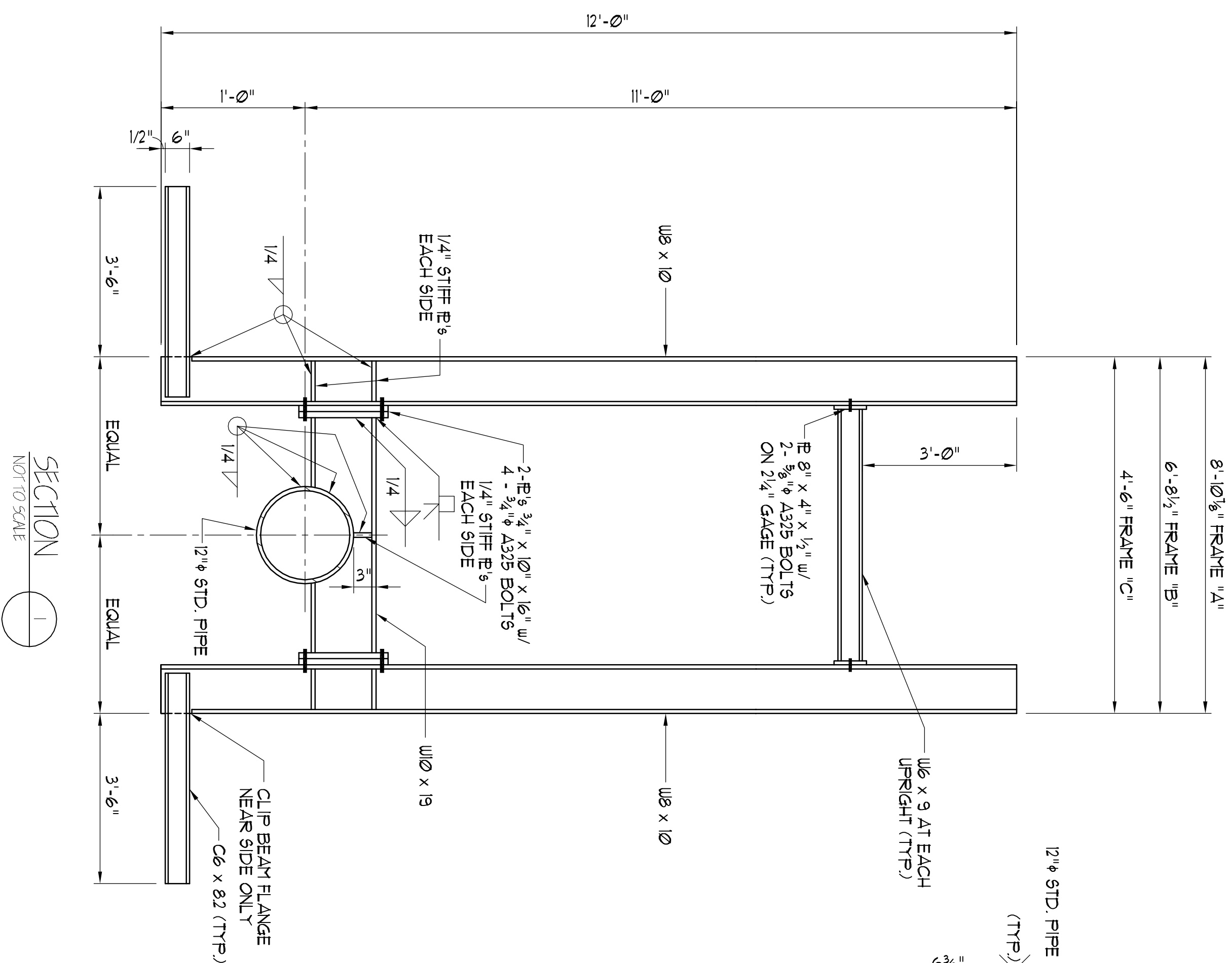


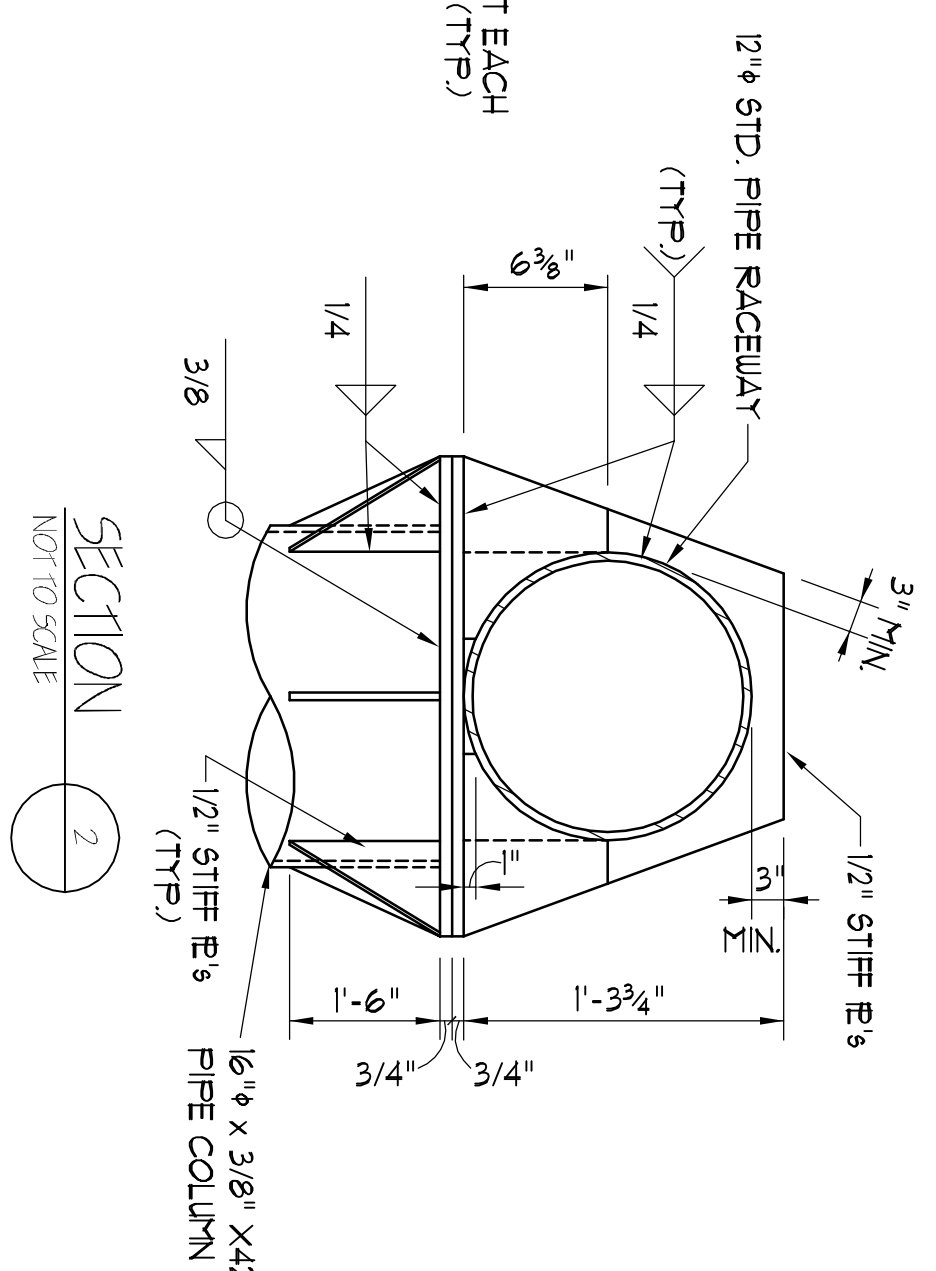
SIGN FRAME ELEVATION
NOT TO SCALE



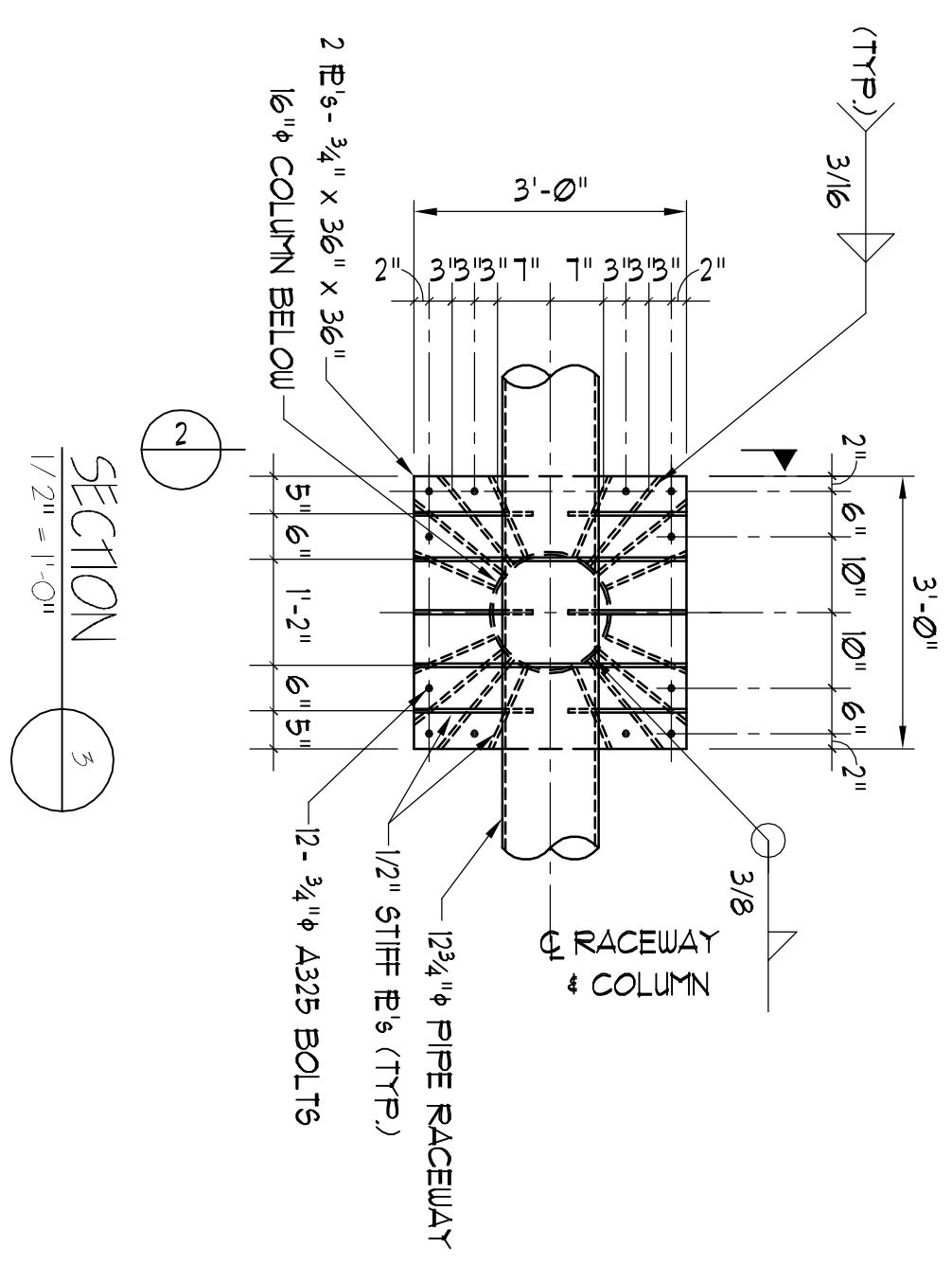
PLAN OF SIGN FRAME
NOT TO SCALE (120° VEE SIGN FACES)



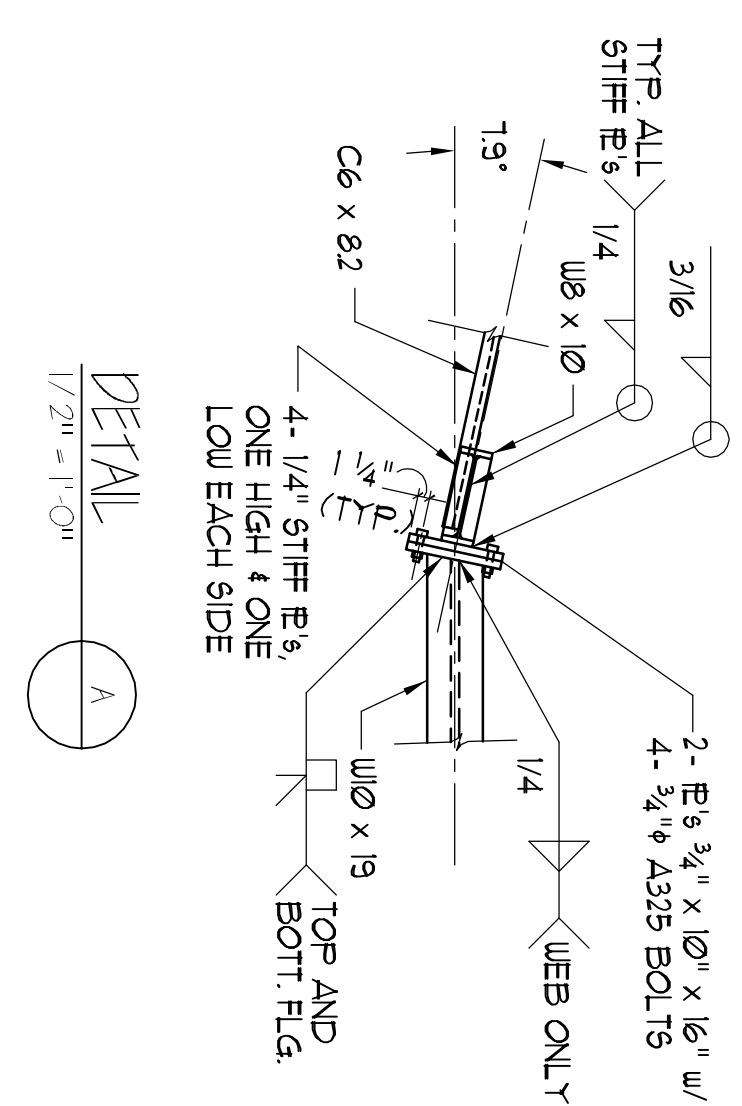
SECTION 1
NOT TO SCALE



SECTION 2
NOT TO SCALE



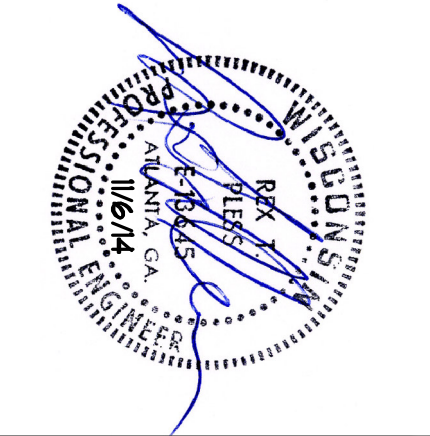
SECTION 3
1/2" = 1'-0"



DETAIL A
1/2" = 1'-0"

- NOTES:**
1. ALL BOLTS 3/4" A325 GALVANIZED UNO.
 2. CONCRETE STANDARD WEIGHT 3000 P.S.I. # 28 DAYS COMPRESSIVE STRENGTH UNO.
 3. DESIGN UNO LOAD 90 MPH, EXPOSURE 'C' PER 2003 INTERNATIONAL BUILDING CODE.
 4. ALL STEEL SHALL BE A517, A-36 UNLESS NOTED. (WIDE FLANGES SHALL BE A992-50)
 5. MAXIMUM SIGN FACE AREA 288 SQUARE FEET.
 6. ALL WELDS SHALL BE MADE BY AN AWS CERTIFIED WELDER USING E70 FILLER MATERIAL.
 7. MINIMUM LATERAL PASSIVE SOIL BEARING CAPACITY SHALL BE 400 P.S.F. PER FOOT OF DEPTH.

B I P JOB NO. B59002070



OUTDOOR SPECIALIST, INC.		Augusta, Georgia	
scale :	NOTED	revisions	by
date :	11/6/14		date
drawn :	TEJ		
chkd :	TEJ		

SIGN FRAME #2975-051