

City of Racine Parks, Recreation and Cultural Services Dept
800 Center St Room 127
Racine, WI 53403

November 5, 2013

**RE – Special Event Application
Ragnar Relay Chicago to benefit CARA Charity**

To Whom It May Concern:

Attached please find information on the race route and other general information for the Ragnar Relay Chicago 2014 race, a benefit for local charities and CARA as our official Chicago charity. This information is to be used to supplement the Special Event Application (also attached). Please let me know if any additional information is required in order to process a Special Event Permit.

Included information:

- A. Race route (Map / Layouts)
- B. Applicant & Event Organizer Info
- C. Description of Event
- D. Date & Hours of Event
- E. Private Security, Sales, Vendors, Food, Alcohol, Entertainment, Temporary Structures
- F. Estimated Attendance
- G. First Aid
- H. Insurance
- I. Charity Non-Profit Status

We believe in providing a quality event that is safe and fun for participants and all involved. I appreciate all the assistance you have offered in our initial steps and look forward to continuing this conversation as we finalize the details of our race.

Feel free to contact me regarding any questions you may have.

Sincerely,

Jo Bauswein

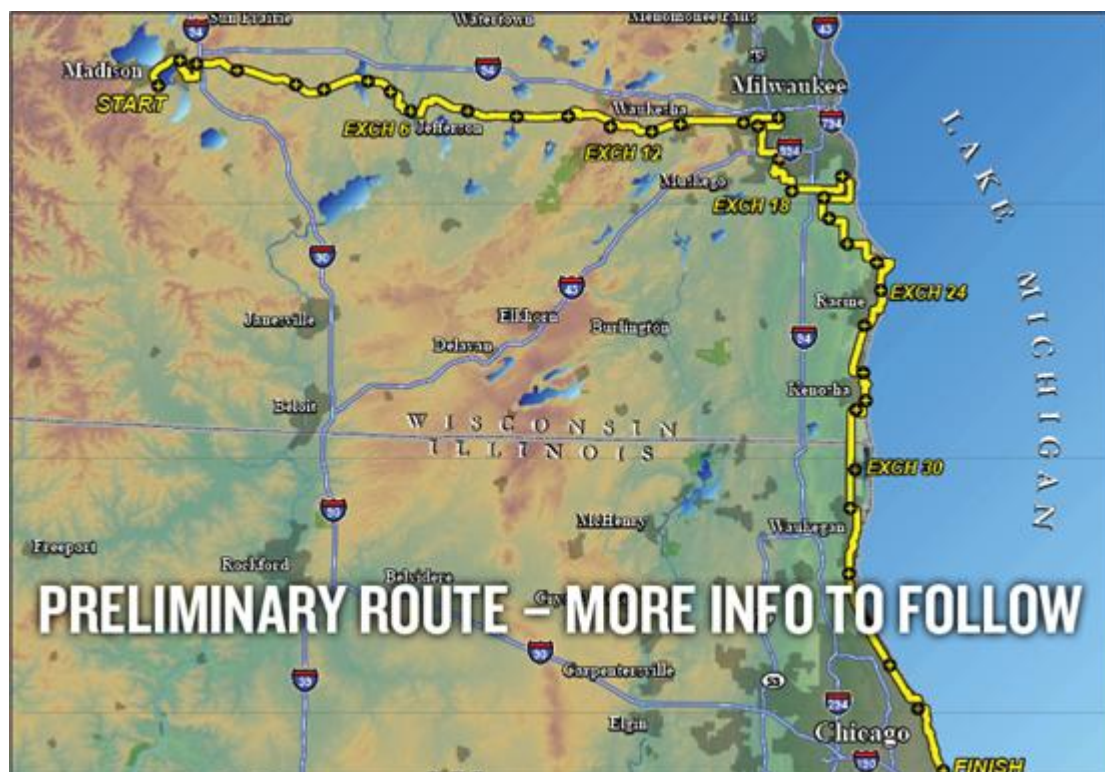
Ragnar Events | Race Director

C: 440.478.6867 | O: 801.499.5024 | F: 801-499-5023

1188 W. Sportsplex Dr. Suite 201, Kaysville, UT 84037

johanna@ragnarrelay.com | www.ragnarrelay.com

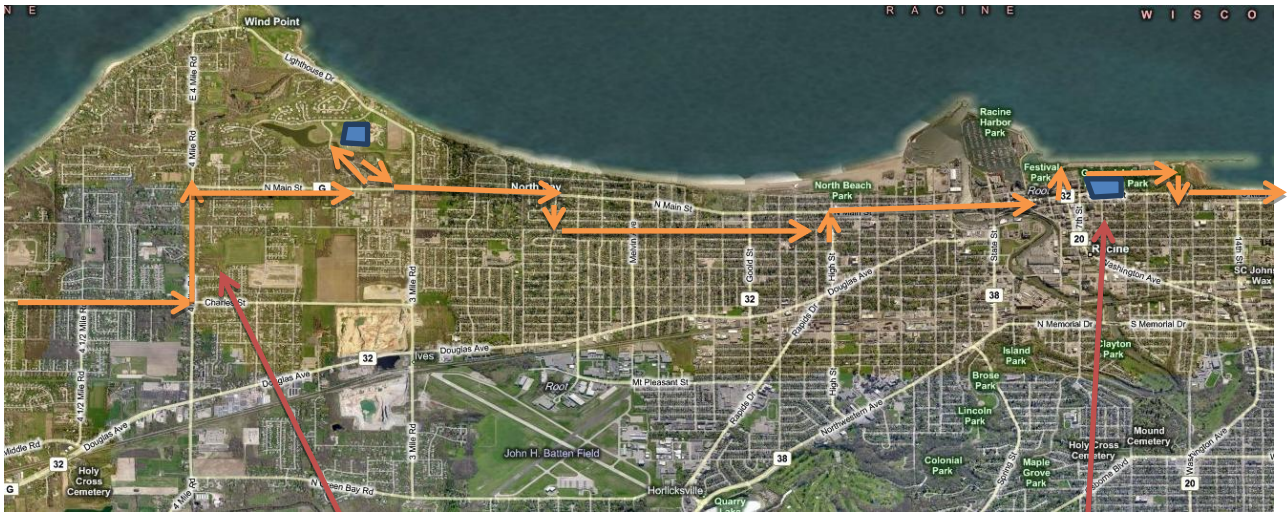
A. Race Route (Map / Layout)



Route – The race will start at Olin/Turville Park in Madison WI on Friday, June 6, 2014 at 6:00am. Runners will make their way across the state of Wisconsin towards Milwaukee and then head south along the lake towards Chicago. The finish line will be located at Lincoln Park in Chicago.

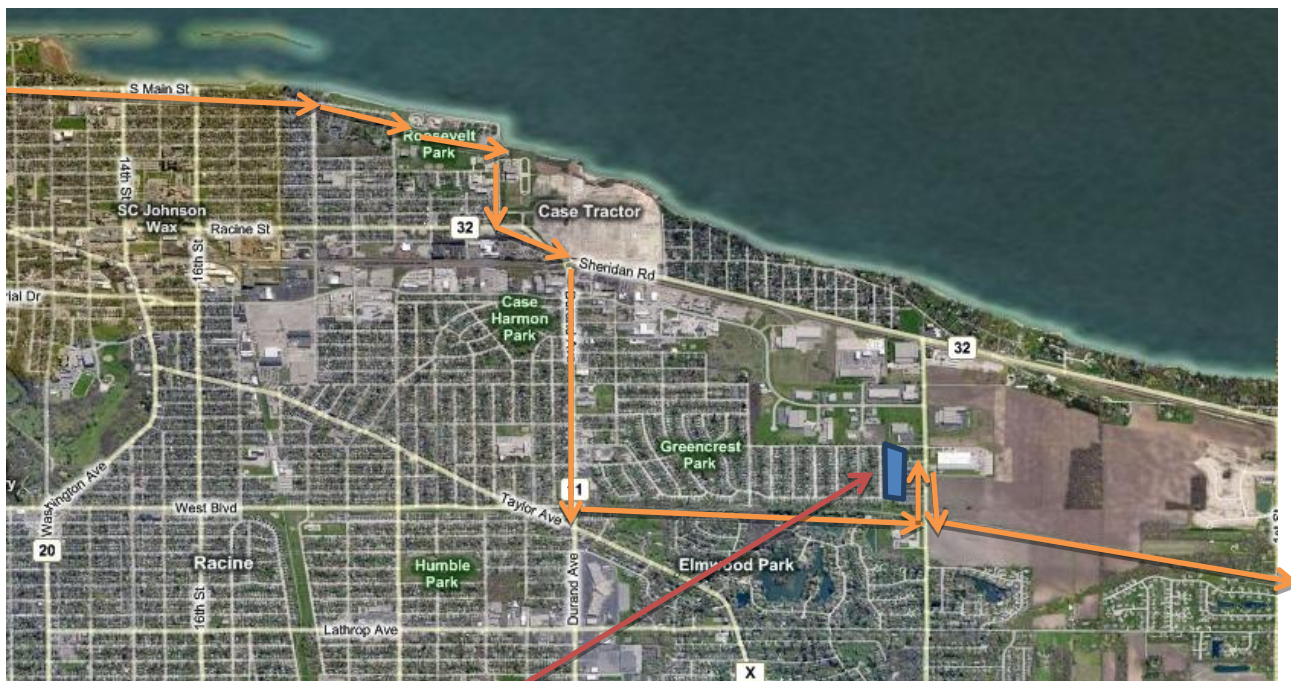


Exchange 22: Greater Racine Kennel Club



Exchange 23: Prairie School

Exchange 24: John Pershing Park



Exchange 25: Jones Elementary School

Section through City of Racine – Runners will be running on County Line Road taking a right on Foley Rd, left on 6 Mile Rd to Exchange 22 at Greater Racine Club.

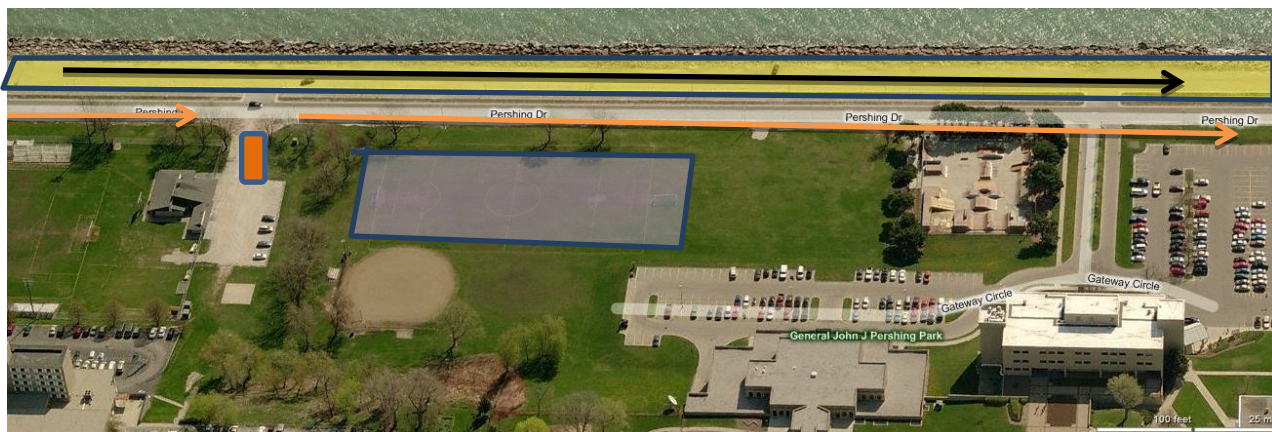
Runners will leave exchange 22 on 6 Mile Rd, turning right on Novak Rd, left onto 5 ½ Mile Rd, right onto Charles St, left onto 4 Mile Rd, right onto Main St, Left onto Campus Dr and into Exchange 23 at The Prairie School.

Runners will leave exchange 23 heading west on Campus Dr, Left onto Main St, right onto Carlton Dr, left onto Erie St with traffic, Left onto Melvin St, right onto Main St, left onto Goold St, right onto Michigan Blvd, right onto Dodge St, Left onto Main St, left onto State St, right onto Pershing Dr into Exchange 24 at John Pershing Park.

Runners will leave the exchange chute heading south on Pershing Dr which turns into 11th St, left on Main St, right onto 16th St, left onto Wisconsin Ave, right onto 21st St, left onto Roosevelt Park Dr which turns into 24th St, left onto Sheridan Rd, right onto Durand Ave, left onto trail MRK trail then left onto Chicory Rd to Exchange 26 at Jones Elementary School.

Runners will leave Exchange 25 heading west on Chicory Rd and then left back onto MRK trail.

The orange line indicates the runner's path. We estimate that runners will pass through the city on Saturday, June 7th between 12:00am and 9:00am. Runners will typically run on sidewalks, crosswalks, bike lanes, and shoulders, and will obey all traffic laws.



Event Timeline

Setup and Volunteer Arrival – 10:30pm – Friday, June 6, 2014

Runners - 12:30am – 8:00am – Saturday, June 7, 2014

Teardown – 8:00am – 9:30am – Saturday, June 7, 2014

B. Applicant Info

Ragnar Events LLC will apply for all permits in the name of the official race name, Ragnar Relay Chicago.

Event Organizer Info

Applicant:

Johanna Bauswein- Race Director

Ragnar Events

1188 W Sportsplex Dr, Suite 201

Kaysville, UT 84037

P (440) 478-6867

johanna@ragnarrelay.com

C. Description of Event

The Ragnar Relay Chicago 2014 is a long distance running relay race that is a benefit for local charities along the course with CARA being the official Chicago charity. The race will start in Madison Wisconsin on Friday, June 6th, 2014 and finish in Lincoln Park on Saturday, June 7th, 2014. We anticipate 500 teams to participate in the Ragnar Relay Chicago 2014. Each team is comprised of 12 individuals and two transport vans. Therefore, we anticipate 5,800 participants and 975 vehicles to be involved in the race.

Since the race is a relay, only one person from each team will be running on the course at one time (the rest of the team is driving in the two vans). That means there will only be 500 runners on the course at a time. These runners will be VERY spread out. We will start the first runners in Madison Wisconsin Olin/Turville Park at 6:00am and the last runners at 4:00pm. This averages out to about one runner every minute, which is typical of Ragnar Relay races. Runners obey all traffic laws and stay with the normal flow of pedestrian traffic. Our race course typically follows sidewalks, running paths, bike lanes, and road shoulders. We do not foresee a need to close any lanes of traffic or close the running path to pedestrian or bike traffic. All participants are required to wear reflective vests, headlamps, and LED lights during nighttime hours.

To reiterate, the event will not close, block, alter, or interrupt the flow of pedestrian, bicycle, or vehicular traffic. There will be no food, water, alcohol, private security, sales, or amplified music at the event.

D. Date & Hours of Event

We will start the first runners in Madison Wisconsin Olin/Turville Park on June 6th, 2014 at 6:00am and the last runners at 4:00pm. We anticipate the first runner to enter Exchange 24 at John Pershing Park around 12:30am on Saturday, June 6th, 2014 and the last runner to leave by 8:00am on Saturday, June 7th, 2014.

E. Private Security, Sales, Vendors, Food, Alcohol, Entertainment, Temporary Structures – NONE

F. Estimated Attendance

As stated above, we anticipate 500 teams to participate in the Ragnar Relay Chicago 2014. Each team is comprised of 12 individuals and two transport vans. Therefore, we anticipate 5,800 participants and 975 vehicles to be involved in the race.

There will be 500 runners passing through the city limits of Racine, spread out between the hours of 12:00am and 9:00am. 500 vehicles will also pass through the city during these same hours and at about the same frequency of runners. The vehicles will, of course, obey all traffic laws.

G. First Aid - First-aid stations and first-aid staff will be located at Exchange 24 at John Pershing Park and at Exchange 30 at North Chicago High School in North Chicago, IL. These first-aid stations will be equipped to handle extreme dehydration, heat stroke, and all of the minor sport injuries we often experience, including; blisters, sprains, strains, stings, etc. We require our first aid staff to be licensed to administer intravenous fluids (typically EMT intermediate and above, or RN, PA, M.D., etc.). We hire first aid workers (EMT intermediate or above), either through a medical staffing agency or directly through local hospitals or emergency service personnel.

In the event of a major medical emergency (i.e. any life threatening condition or injury that requires immediate medical attention) we instruct runners/volunteers to first call 911. The line of communication then follows: 911 → Race Director → Senior Race Director → Course Manager for that section.

In addition to our own first aid services on course, we list the local emergency rooms near the course, along with their address and phone number in the race packets.

H. Insurance

Insurance will follow under separate cover.

I. Charity Non-Profit Status

Local charities along the course will benefit from partnering with the Chicago Ragnar Relay 2014 through food sales and/or volunteering opportunities. Chicago Ragnar partnered with CARA as the main Chicago charity.