

# RACINE COUNTY DEPARTMENT OF PUBLIC WORKS

## PLAN OF PROPOSED IMPROVEMENT

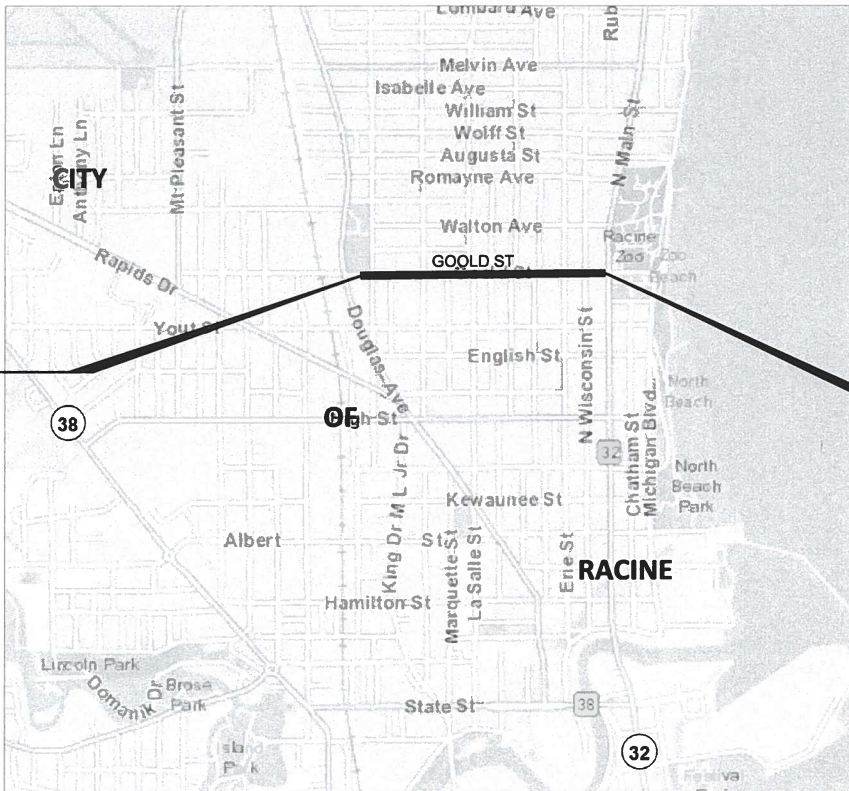
# GOULD STREET

## DOUGLASS AVENUE (STH32) TO NORTH MAIN STREET

### LOCAL STREET RACINE COUNTY

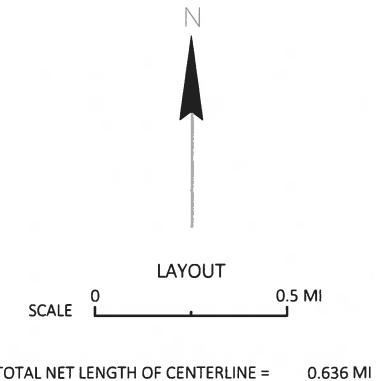
STATE PROJECT NUMBER  
**2703-11-70**

R/W PROJECT NUMBER	SHEET NUMBER	TOTAL SHEETS
2703-11-70	4.01	13
PLAT OF RIGHT OF WAY REQUIRED FOR <b>GOULD STREET</b> DOUGLASS AVENUE TO MAIN STREET		
GOULD ST.		RACINE COUNTY
CONST. PROJECT NO. 2703-11-70		



**BEGIN RELOCATION ORDER**  
STA. 34+80.52  
BEING 1.27' NORTH OF AND 165' WEST OF THE WEST 1/4 CORNER OF SECTION 4, T3N, R23E  
Y= 193,557.62  
X= 636,037.43

**END RELOCATION ORDER**  
STA. 68+36.60  
BEING 4.63' NORTH OF AND 555' EAST OF THE SOUTHEAST CORNER OF THE NORTHWEST 1/4 OF SECTION 4, T3N, R23E  
Y= 193,582.38  
X= 639,393.41



HORIZONTAL POSITIONS SHOWN ON THIS PLAN ARE WISCONSIN COORDINATE REFERENCE SYSTEM (WISCRS), RACINE COUNTY, NAD83 (2011), IN U.S. SURVEY FEET. POSITIONS SHOWN ARE GRID COORDINATES, GRID BEARINGS, AND GRID DISTANCES. GRID DISTANCES ARE THE SAME AS GROUND DISTANCES.

### CONVENTIONAL SYMBOLS

SECTION LINE		PARCEL NUMBER	UTILITY NUMBER
QUARTER LINE		SECTION CORNER	R/W MONUMENT
SIXTEENTH LINE		NOTATION FOR COMBUSTIBLE FLUIDS	NON-MONUMENTED R/W POINT
NEW REFERENCE LINE		NOTATION FOR HIGH VOLTAGE TRANSMISSION LINES	FOUND IRON PIN
NEW R/W LINE		CAUTION	VALVE (GAS, WATER, ETC.)
EXISTING R/W LINE		NOTATION FOR ACCESS CONTROLLED BY ACQUISITION	SIGN
PROPERTY LINE		NO ACCESS (BY STATUTORY AUTHORITY)	OFF-PREMISE SIGN
LOT, TIE, AND OTHER MINOR LINES		ACCESS RESTRICTED (BY PREVIOUS PROJECT OR CONTROL)	
SLOPE INTERCEPT		NO ACCESS (NEW HIGHWAY)	
CORPORATE LIMITS		NATIONAL GEODETIC SURVEY MONUMENT	
UNDERGROUND FACILITY (COMMUNICATIONS, ELECTRIC, ETC)		SIXTEENTH CORNER MONUMENT	
FEE ACQUISITION AREA (HATCHING VARIES BY OWNER)		PARALLEL OFFSETS	
TEMP. LIMITED EASEMENT AREA			
EASEMENT AREA (HIGHWAY, PERMANENT LIMITED, OR RESTRICTED DEVELOPMENT)			
TRANSMISSION STRUCTURES			
BUILDING			
BUILDING (TO BE REMOVED)			
BRIDGE			

### CONVENTIONAL ABBREVIATIONS

ACCESS RIGHTS	AR	POINT OF INTERSECTION	PI
ACRES	AC	PROPERTY LINE	PL
AHEAD	AH	RECORDED AS (100')	R/I
ALUMINUM	ALUM	REEL / IMAGE	R/L
AND OTHERS	ET AL	REFERENCE LINE	REM
BACK	BK	REMAINING	RDE
BLOCK	BLK	RESTRICTIVE DEVELOPMENT	
CENTERLINE	C/L	EASEMENT	RT
CERTIFIED SURVEY MAP	CSM	RIGHT	R/W
CONCRETE	CONC	RIGHT OF WAY	SEC
COUNTY	CO	SECTION	SEPV
COUNTY TRUNK HIGHWAY	CTH	SEPTIC VENT	SF
DISTANCE	DIST	SQUARE FEET	STH
CORNER	COR	STATE TRUNK HIGHWAY	STA
DOCUMENT NUMBER	DOC	STATION	TP
EASEMENT	EASE	TELEPHONE PEDESTAL	TLE
EXISTING	EX	TEMPORARY LIMITED EASEMENT	TPP
GAS VALVE	GV	TRANSPORTATION PROJECT PLAT	
GRID NORTH	GN	UNITED STATES HIGHWAY VOLUME	USH
HIGHWAY EASEMENT	HE		V
IDENTIFICATION	ID		
LAND CONTRACT	LC		
LEFT	LT		
MONUMENT	MON		
NATIONAL GEODETIC SURVEY	NGS		
NUMBER	NO		
OUTLOT	OL		
PAGE	P		
POINT OF TANGENCY	PT		
PERMANENT LIMITED EASEMENT	PLE		
POINT OF BEGINNING	POB		
POINT OF CURVATURE	PC		
POINT OF COMPOUND CURVE	PCC		

### CONVENTIONAL UTILITY SYMBOLS

WATER		NON-COMPENSABLE		COMPENSABLE	
GAS		TELEPHONE POLE		TELEPHONE PEDESTAL	
TELEPHONE					
OVERHEAD TRANSMISSION LINES					
ELECTRIC					
CABLE TELEVISION					
FIBER OPTIC					
SANITARY SEWER					
STORM SEWER					
ELECTRIC TOWER					

### CURVE DATA

LONG CHORD	LCH
LONG CHORD BEARING	LCB
RADIUS	R
DEGREE OF CURVE	D
CENTRAL ANGLE	Δ/DELTA
LENGTH OF CURVE	L
TANGENT	T
DIRECTION AHEAD	DA
DIRECTION BACK	DB

**NOTES:**

RIGHT OF WAY MONUMENTS ARE TYPE 2 AND ARE PLACED PRIOR TO OR AT THE COMPLETION OF THE PROJECT.

RIGHT OF WAY BOUNDARIES ARE DEFINED WITH COURSES OF THE PERIMETER OF THE HIGHWAY LANDS REFERENCED TO THE U.S. PUBLIC LAND SURVEY OR OTHER SURVEYS OF PUBLIC RECORD.

PROPERTY LINES SHOWN ON THIS PLAT ARE DRAWN FROM DATA DERIVED FROM MAPS AND DOCUMENTS OF PUBLIC RECORD AND/OR EXISTING OCCUPATIONAL LINES. THIS PLAT MY NOT BE A TRUE REPRESENTATION OF EXISTING PROPERTY LINES, EXCLUDING RIGHT-OF-WAY LINES, AND SHOULD NOT BE USED AS A SUBSTITUTE FOR AN ACCURATE FIELD SURVEY.

A TEMPORARY LIMITED EASEMENT IS A RIGHT FOR CONSTRUCTION AND MAINTENANCE PURPOSES, AS DEFINED HEREIN, INCLUDING THE RIGHT TO OPERATE NECESSARY EQUIPMENT THEREON AND THE RIGHT OF INGRESS AND EGRESS AS LONG AS REQUIRED FOR SUCH PUBLIC PURPOSE, INCLUDING THE RIGHT TO PRESERVE, PROTECT, REMOVE, OR PLANT THEREON ANY VEGETATION THAT THE HIGHWAY AUTHORITIES MAY DEEM NECESSARY OR DESIRABLE. ALL TLES EXPIRE AT THE COMPLETION OF THE CONSTRUCTION PROJECT FOR WHICH THIS INSTRUMENT IS GIVEN.

THE TLE'S DO NOT INCLUDE ANY PART OF THE BUILDINGS.

ACCEPTED FOR

CITY \_\_\_\_\_ of \_\_\_\_\_ RACINE \_\_\_\_\_

(Date) \_\_\_\_\_ (Signature & Title of Official) \_\_\_\_\_

ORIGINAL PLANS PREPARED BY

**GRÄEF** 275 W. WISCONSIN AVE.  
SUITE 300  
MILWAUKEE, WI 53203



REVISION DATE

10/11/20 *Carla J. Rollins*  
(Date) \_\_\_\_\_ (Signature) \_\_\_\_\_

PROJECT ID: 2703-11-70

COUNTY: RACINE

# SCHEDULE OF LANDS & INTERESTS REQUIRED

OWNER'S NAMES ARE SHOWN FOR REFERENCE  
PURPOSED ONLY AND ARE SUBJECT TO CHANGE  
PRIOR TO THE TRANSFER OF LAND INTERESTS  
TO WASHINGTON COUNTY. \* DENOTES AREAS COMPUTED

AREAS SHOWN IN THE TOTAL ACRES COLUMN MAY BE APPROXIMATE  
AND ARE DERIVED FROM TAX ROLLS OR OTHER AVAILABLE SOURCES  
AND MAY NOT INCLUDE LANDS OF THE OWNER WHICH ARE NOT  
CONTIGUOUS TO THE AREA TO BE ACQUIRED.

PARCEL NUMBER	SHEET NUMBER	OWNER	INTEREST REQUIRED	TOTAL ACRES	NEW	EXISTING	TOTAL	REMAINING ACRES	TLE SQ. FT.	PERM. ACRES	PARCEL NUMBER
1	4.08	The James P. and Joan M. Pettit Family Trust	TLE	0.137	0.000	0.000	0.000	0.137	233	0.000	1
2	4.08	John M. Wensing and Janeen S. Wensing, husband and wife, as survivorship marital property	TLE	0.137	0.000	0.000	0.000	0.137	181	0.000	2
3	4.08	Jayson N. Scoon and Amanda R. Scoon, husband and wife	TLE	0.161	0.000	0.000	0.000	0.161	39	0.000	3
4	4.08	Rolando G. Maldonado Davalos	TLE	0.119	0.000	0.000	0.000	0.119	75	0.000	4
5	4.08	Tranquility Holdings Group, LLC	TLE	0.123	0.000	0.000	0.000	0.123	199	0.000	5
6	4.08	Vickie L. Smith	TLE	0.083	0.000	0.000	0.000	0.083	400	0.000	6
7	4.08	Phinette A. Just, Wife	TLE	0.085	0.000	0.000	0.000	0.085	408	0.000	7
8	4.09	Paul B. Farrey, a single person	TLE	0.115	0.000	0.000	0.000	0.115	112	0.000	8
9	4.09	Jaysson La Freniere and Julie A. La Freniere, husband and wife, as joint tenants with right of survivorship	TLE	0.115	0.000	0.000	0.000	0.115	227	0.000	9
10	4.09	Robert S. Bernal Jr. and Elizabeth P. Robledo, both single persons	TLE	0.115	0.000	0.000	0.000	0.115	256	0.000	10
11	4.09	Matthew David Heimes	TLE	0.115	0.000	0.000	0.000	0.115	400	0.000	11
12	4.09	Peter J. Johnson, a single person	TLE	0.115	0.000	0.000	0.000	0.115	400	0.000	12
13	4.09	Susan E. Francis and Thomas D. Francis, a married couple	TLE	0.115	0.000	0.000	0.000	0.115	273	0.000	13
14	4.09	Karen Jean Groth, also known as Karen Groth, a single person	TLE	0.115	0.000	0.000	0.000	0.115	219	0.000	14
15	4.09	Miriam Y. Villanueva, a married person	TLE	0.115	0.000	0.000	0.000	0.115	480	0.000	15
16	4.09	Jay Anderson and Pam Anderson	TLE	0.115	0.000	0.000	0.000	0.115	480	0.000	16
17	4.09	Robert E. Kandl, Jr., Trustee of the Michael Scott Kandl Trust	TLE	0.115	0.000	0.000	0.000	0.115	480	0.000	17
18	4.09	Marie E. Bidlo	TLE	0.115	0.000	0.000	0.000	0.115	197	0.000	18
19	4.09	Jeffrey S. Pitchford	TLE	0.083	0.000	0.000	0.000	0.083	92	0.000	19
20	4.09	Casey Jeans and James Jeans	TLE	0.083	0.000	0.000	0.000	0.083	236	0.000	20
21	4.09	Martin J. Danzer and Jamie M. Danzer, husband and wife	TLE	0.074	0.000	0.000	0.000	0.074	241	0.000	21
22	4.09	GRT, LLC	TLE	0.103	0.000	0.000	0.000	0.103	458	0.000	22
23	4.09	Jerry Dunk, also known as Jerome P. Dunk and Jean Dunk, also known as Jean R. Dunk, husband and wife	TLE	0.103	0.000	0.000	0.000	0.103	390	0.000	23
24	4.09	Todd M. Brown and Kristine M. Brown, husband and wife	TLE	0.099	0.000	0.000	0.000	0.099	456	0.000	24
25	4.09	Anne L. Barrows and Jeffrey G. Barrows, mother and son as joint tenants; not in common	TLE	0.179	0.000	0.000	0.000	0.179	400	0.000	25
26	4.09	Sharon A. Van Swol, as Trustee of the Sharon A. Van Swol Family Trust Dated December 6, 2001	TLE	0.109	0.000	0.000	0.000	0.109	467	0.000	26
27	4.09	Suzanne M. Trevino	TLE	0.155	0.000	0.000	0.000	0.155	257	0.000	27
28	4.09	Onnig H. Katerdjian and Mary N. Katerdjian, his wife, as joint tenants and not tenants in common	TLE	0.109	0.000	0.000	0.000	0.109	209	0.000	28
29	4.09	Gary L. Czechowicz, a divorced man	TLE	0.104	0.000	0.000	0.000	0.104	504	0.000	29
30	4.10	Dale Decker	TLE	0.070	0.000	0.000	0.000	0.070	222	0.000	30
31	4.10	Noemi Zavala	TLE	0.068	0.000	0.000	0.000	0.068	196	0.000	31
32	4.10	Jim Robert Tomes	TLE	0.068	0.000	0.000	0.000	0.068	68	0.000	32
33	4.10	Karen Wenzel	TLE	0.115	0.000	0.000	0.000	0.115	67	0.000	33
34	4.10	Stephanie M. Birkenheier	TLE	0.115	0.000	0.000	0.000	0.115	278	0.000	34
35	4.10	Uriel Romero and Maria D. Romero, husband and wife	TLE	0.115	0.000	0.000	0.000	0.115	400	0.000	35

4

4

REVISION DATE	DATE <u>09/30/2020</u>	SCALE, FEET	HWY: GOULD STREET	STATE R/W PROJECT NUMBER <u>2703-11-70</u>	PLAT SHEET <u>4.02</u>
	GRID FACTOR <u>N/A</u>		COUNTY: RACINE	CONSTRUCTION PROJECT NUMBER <u>2703-11-70</u>	PS&E SHEET _____

E

# SCHEDULE OF LANDS & INTERESTS REQUIRED

OWNER'S NAMES ARE SHOWN FOR REFERENCE  
PURPOSED ONLY AND ARE SUBJECT TO CHANGE  
PRIOR TO THE TRANSFER OF LAND INTERESTS  
TO WASHINGTON COUNTY.

\* DENOTES AREAS COMPUTED

AREAS SHOWN IN THE TOTAL ACRES COLUMN MAY BE APPROXIMATE  
AND ARE DERIVED FROM TAX ROLLS OR OTHER AVAILABLE SOURCES  
AND MAY NOT INCLUDE LANDS OF THE OWNER WHICH ARE NOT  
CONTIGUOUS TO THE AREA TO BE ACQUIRED.

PARCEL NUMBER	SHEET NUMBER	OWNER	INTEREST REQUIRED	TOTAL ACRES	NEW	EXISTING	TOTAL	REMAINING ACRES	TLE SQ. FT.	PERM. ACRES	PARCEL NUMBER
36	4.10	Mangat Properties, Inc.	TLE	0.115	0.000	0.000	0.000	0.115	400	0.000	36
37	4.10	Laurie A. Greening	TLE	0.115	0.000	0.000	0.000	0.115	400	0.000	37
38	4.10	CWC Homes, LLC	TLE	0.115	0.000	0.000	0.000	0.115	261	0.000	38
39	4.10	Scott A. Zamecnik and Cheryl A. Zamecnik, husband and wife as joint tenants with rights of survivorship	TLE	0.115	0.000	0.000	0.000	0.115	96	0.000	39
40	4.10	Mark J. Shimkus	TLE	0.115	0.000	0.000	0.000	0.115	173	0.000	40
41	4.10	Dean J. Calin, a married person	TLE	0.103	0.000	0.000	0.000	0.103	519	0.000	41
		Trinity Lutheran Church- Missouri Synod, also known as Trinity English Evangelical Lutheran Congregation, also known as Trinity									
42	4.10	Lutheran Church and School	TLE	2.431	0.000	0.000	0.000	2.431	270	0.000	42
43	4.10	Gregory D. Opahle and Stacie L. Opahle, husband and wife	TLE	0.121	0.000	0.000	0.000	0.121	134	0.000	43
44	4.10	Mary Tomes, a single person	TLE	0.087	0.000	0.000	0.000	0.087	269	0.000	44
45	4.10	Brandon Chapple	TLE	0.124	0.000	0.000	0.000	0.124	250	0.000	45
46	4.10	Jesse R. Gonzales, John J. Gonzales, Xavier C. Gonzales and Irma L. Mueller, as tenants in common	TLE	0.126	0.000	0.000	0.000	0.126	483	0.000	46
47	4.11	Intentionally omitted	TLE	0.000	0.000	0.000	0.000	0.000	0	0.000	47
48	4.11	Intentionally omitted	TLE	0.000	0.000	0.000	0.000	0.000	0	0.000	48
49	4.11	Randy L. Miller	TLE	0.074	0.000	0.000	0.000	0.074	66	0.000	49
50	4.11	David E. Tarczon and Elizabeth Clemens-Tarczon, Husband and Wife, Survivorship Marital Property	TLE	0.115	0.000	0.000	0.000	0.115	227	0.000	50
51	4.11	Jeffrey R. Parkhill	TLE	0.115	0.000	0.000	0.000	0.115	374	0.000	51
52	4.11	H.T. LLC, A Wisconsin Limited Liability Company	TLE	0.230	0.000	0.000	0.000	0.230	659	0.000	52
53	4.11	Trent H. Butler, single	TLE	0.147	0.000	0.000	0.000	0.147	301	0.000	53
54	4.11	Mildred A. Erdman	TLE	0.149	0.000	0.000	0.000	0.149	528	0.000	54
55	4.11	Martin S. Hawkinson	TLE	0.091	0.000	0.000	0.000	0.091	397	0.000	55
56	4.11	Dietrick J. Peters and Lisa M. Peters, husband and wife	TLE	0.095	0.000	0.000	0.000	0.095	706	0.000	56
57	4.11	Daniel Slagell, a single person	TLE	0.095	0.000	0.000	0.000	0.095	325	0.000	57
58	4.11	Marty S. Hawkinson	TLE	0.067	0.000	0.000	0.000	0.067	302	0.000	58
59	4.12	Steven Tajnai	TLE	0.124	0.000	0.000	0.000	0.124	177	0.000	59
60	4.12	Joanne A. Zlevor	TLE	0.110	0.000	0.000	0.000	0.110	203	0.000	60
61	4.12	Mangat Properties Inc.	TLE	0.110	0.000	0.000	0.000	0.110	93	0.000	61
62	4.12	Jeffrey A. Therkelsen and Jane K. Therkelsen, husband and wife	TLE	0.110	0.000	0.000	0.000	0.110	246	0.000	62
63	4.12	Joshua D. Osinga	TLE	0.110	0.000	0.000	0.000	0.110	306	0.000	63
64	4.12	Donald L. Beres, a single person	TLE	0.124	0.000	0.000	0.000	0.124	395	0.000	64
65	4.12	Corey Kruse, a married man	TLE	0.079	0.000	0.000	0.000	0.079	185	0.000	65
66	4.12	Lake Birch Properties, LLC, also known as Lakebirch Properties LLC	TLE	0.077	0.000	0.000	0.000	0.077	184	0.000	66
67	4.12	Michael R. Dion and Nicole E. La Russa	TLE	0.110	0.000	0.000	0.000	0.110	114	0.000	67
68	4.12	Amy K. Kakavas and Steven M. Cooper	TLE	0.110	0.000	0.000	0.000	0.110	69	0.000	68
69	4.12	Sandra F. Gaura	TLE	0.110	0.000	0.000	0.000	0.110	311	0.000	69
70	4.12	John D. Magnuson, a single person	TLE	0.124	0.000	0.000	0.000	0.124	407	0.000	70

4

4

REVISION DATE	DATE <u>09/30/2020</u>	SCALE, FEET	HWY: GOOLD STREET	STATE R/W PROJECT NUMBER	2703-11-70	PLAT SHEET	4.03
	GRID FACTOR <u>N/A</u>		COUNTY: RACINE	CONSTRUCTION PROJECT NUMBER	2703-11-70	PS&E SHEET	<u>      </u>

# SCHEDULE OF LANDS & INTERESTS REQUIRED

OWNER'S NAMES ARE SHOWN FOR REFERENCE  
PURPOSED ONLY AND ARE SUBJECT TO CHANGE  
PRIOR TO THE TRANSFER OF LAND INTERESTS  
TO WASHINGTON COUNTY. \* DENOTES AREAS COMPUTED

AREAS SHOWN IN THE TOTAL ACRES COLUMN MAY BE APPROXIMATE  
AND ARE DERIVED FROM TAX ROLLS OR OTHER AVAILABLE SOURCES  
AND MAY NOT INCLUDE LANDS OF THE OWNER WHICH ARE NOT  
CONTIGUOUS TO THE AREA TO BE ACQUIRED.

PARCEL NUMBER	SHEET NUMBER	OWNER	INTEREST REQUIRED	TOTAL ACRES	NEW	EXISTING	TOTAL	REMAINING ACRES	TLE SQ. FT.	PERM. ACRES	PARCEL NUMBER
71	4.12	Mark A. Truckey and Jonathan A. Truckey	TLE	0.067	0.000	0.000	0.000	0.067	363	0.000	71
72	4.12	Eric O. Haigh and Kim M. Haigh, husband and wife	TLE	0.094	0.000	0.000	0.000	0.094	291	0.000	72
73	4.12	Imke Niehues	TLE	0.158	0.000	0.000	0.000	0.158	346	0.000	73
74	4.12	Julaine Rosinski	TLE	0.103	0.000	0.000	0.000	0.103	121	0.000	74
75	4.12	Jorge Vargas	TLE	0.103	0.000	0.000	0.000	0.103	169	0.000	75
76	4.12	Glenn H. Lorence and Mary Ann Lorence, as to a life estate interest and special power of appointment and Katherine Janette and Stephanie Christensen, as joint tenants as to a remainder interest	TLE	0.103	0.000	0.000	0.000	0.103	317	0.000	76
77	4.12	Phuong Nguyen, a married man, as his sole and separate property	TLE	0.103	0.000	0.000	0.000	0.103	92	0.000	77
78	4.12	David J. Krofta	TLE	0.098	0.000	0.000	0.000	0.098	48	0.000	78
79	4.12	Jessica Shain and Oscar Nevarez, also known as Oscar M. Nevarez?	TLE	0.062	0.000	0.000	0.000	0.062	264	0.000	79
80	4.12	Nancy H. Miller-Kroll, Matthew G. Miller, Michelle I. Miller and Lisa A. Miller	TLE	0.052	0.000	0.000	0.000	0.052	271	0.000	80
81	4.13	Alquds Investments LLC	TLE	0.198	0.000	0.000	0.000	0.198	241	0.000	81
82	4.13	Fani and Fani, LLC	TLE	0.097	0.000	0.000	0.000	0.097	129	0.000	82
83	4.13	Dawn's Randolph, LLC	TLE	0.092	0.000	0.000	0.000	0.092	212	0.000	83
84	4.13	Racine/Kenosha Community Action Agency, Inc.	TLE	0.950	0.000	0.000	0.000	0.950	153	0.000	84
85	4.13	2100 N. Main Street, LLC	TLE	0.396	0.000	0.000	0.000	0.396	1150	0.000	85
86	4.13	Robert Mianecki	TLE	0.066	0.000	0.000	0.000	0.066	315	0.000	86
87	4.13	Dorothy L. Koch	TLE	0.058	0.000	0.000	0.000	0.058	84	0.000	87
88	4.13	Ruth M. Rademacher, as Trustee of the Thomas R. Hansen and Ruth M. Rademacher Revocable Trust dated December 17, 2012	TLE	0.124	0.000	0.000	0.000	0.124	356	0.000	88
89	4.13	Jatindar Singh Mangat	TLE	0.124	0.000	0.000	0.000	0.124	369	0.000	89
90	4.13	3G Properties LLC	TLE	0.124	0.000	0.000	0.000	0.124	266	0.000	90

4

4

500 4.10, 4.13 We Energies - Electric CONVEYANCE OF RIGHTS 500

REVISION DATE	DATE <u>09/30/2020</u>	SCALE, FEET	HWY: GOOLD STREET	STATE R/W PROJECT NUMBER 2703-11-70	PLAT SHEET 4.04
	GRID FACTOR <u>N/A</u>		COUNTY: RACINE	CONSTRUCTION PROJECT NUMBER 2703-11-70	PS&E SHEET _____

E



WITNESS MONUMENT

CITY



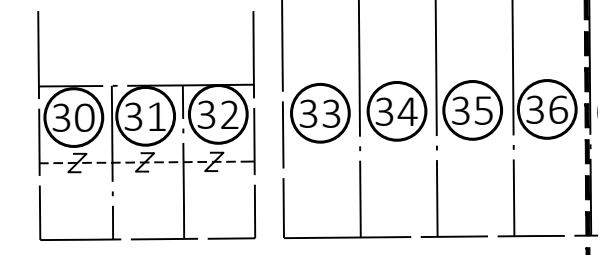
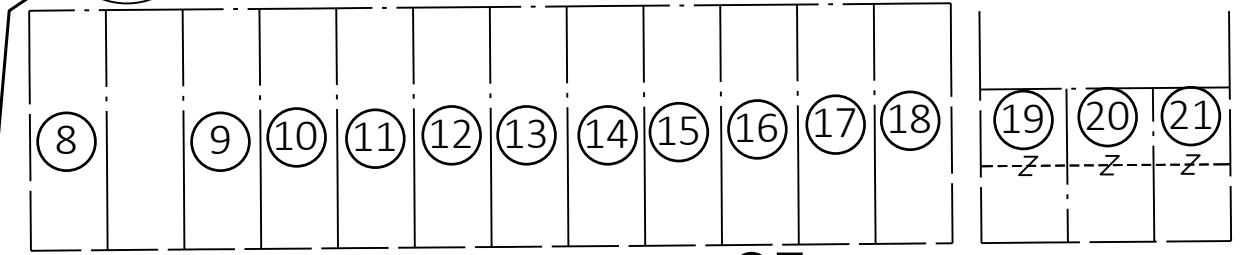
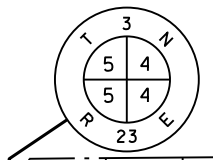
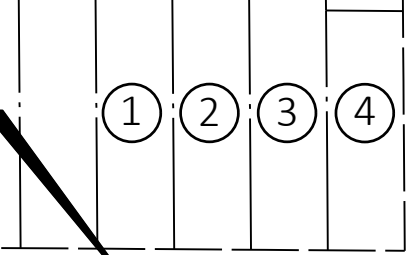
4

4

SE-NE  
SEC. 5, T3N, R23E

SW-NW  
SEC. 4, T3N, R23E

BEGIN RELOCATION  
ORDER  
STA. 34+80.52  
Y= 193,557.62  
X= 636,037.43



34+00 36+00

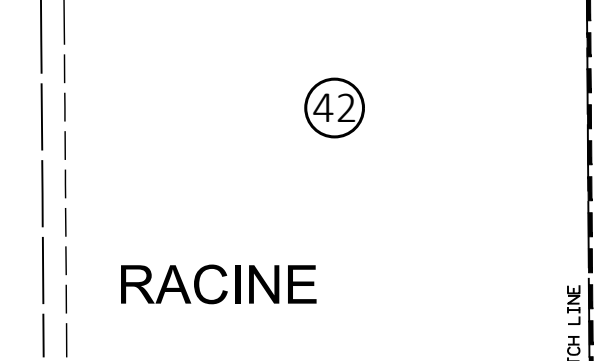
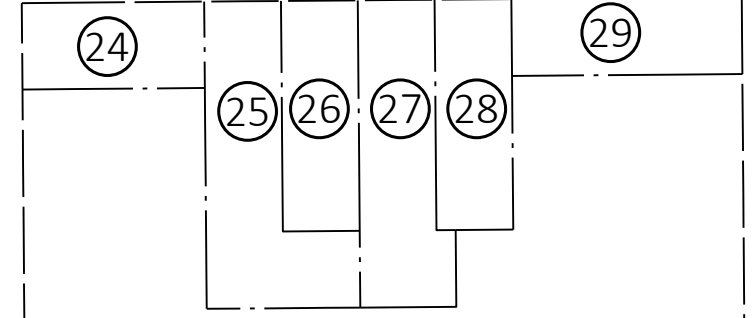
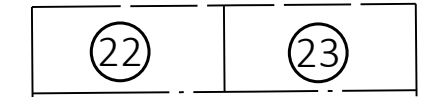
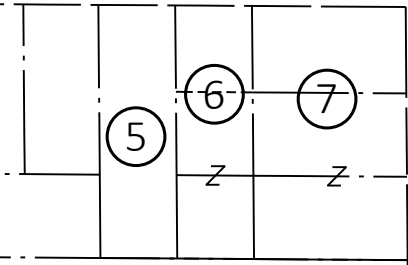
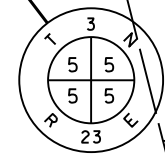
38+00 40+00 42+00 44+00 46+00

GOOLD

STREET

OF

1/4 SECTION LINE



NE-SE  
SEC. 5, T3N, R23E

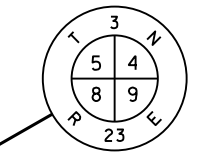
NW-SW  
SEC. 4, T3N, R23E

RACINE

CHARLES  
SECTION LINE

CARTER STREET

GENEVA



WITNESS MONUMENT

REVISION DATE	_____	_____	_____	_____
DATE	9/30/2020			
GRID FACTOR	_____			

DATE	9/30/2020		
GRID FACTOR	_____		



HWY:	GOOLD STREET
COUNTY:	RACINE

STATE R/W PROJECT NUMBER	2703-11-70
CONSTRUCTION PROJECT NUMBER	2703-11-70

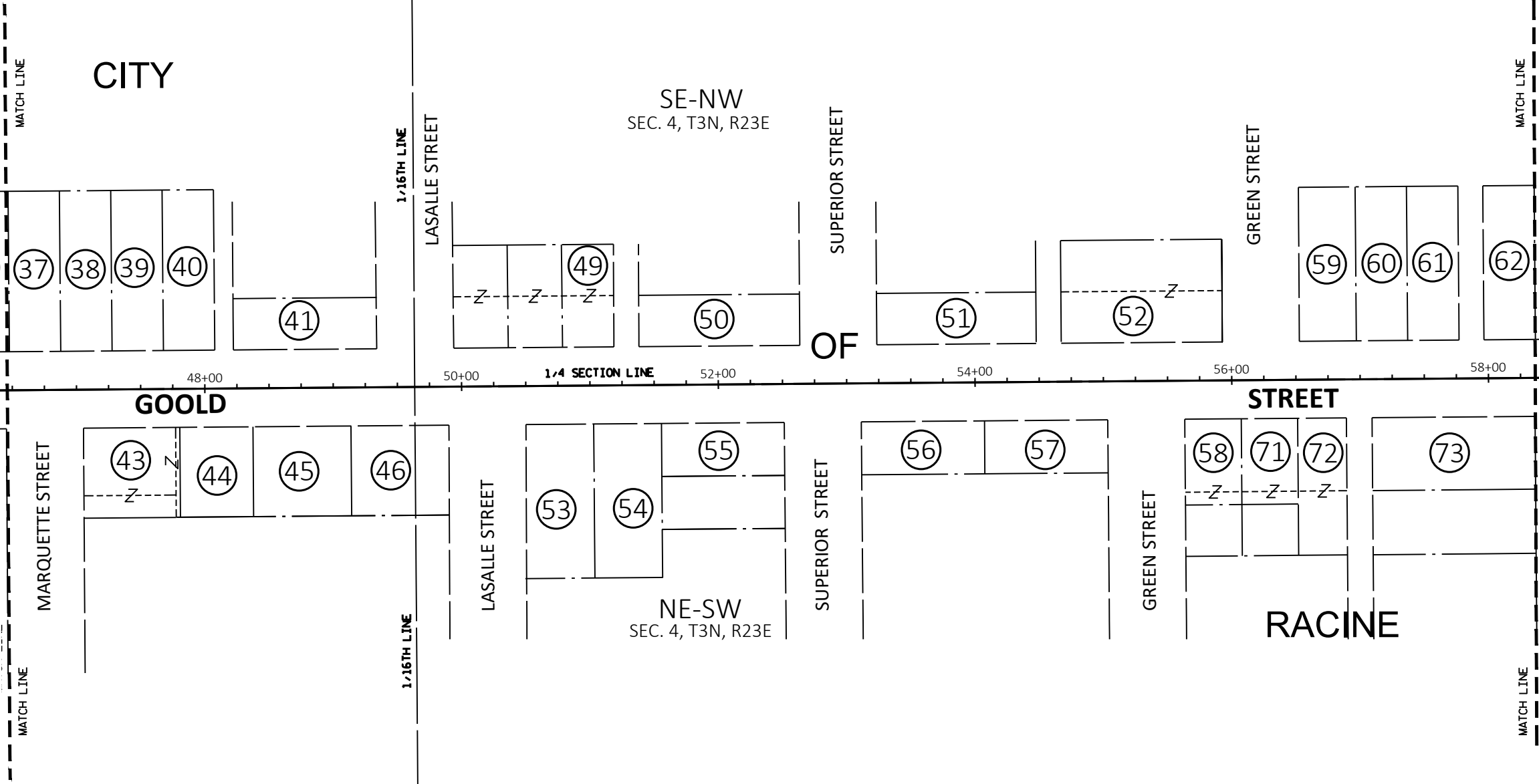
PLAT SHEET	4.05
PS&E SHEET	_____

E



4

4



REVISION DATE	_____	_____	_____	_____
DATE	9/30/2020			
GRID FACTOR	_____			



HWY:	GOOLD STREET
COUNTY:	RACINE

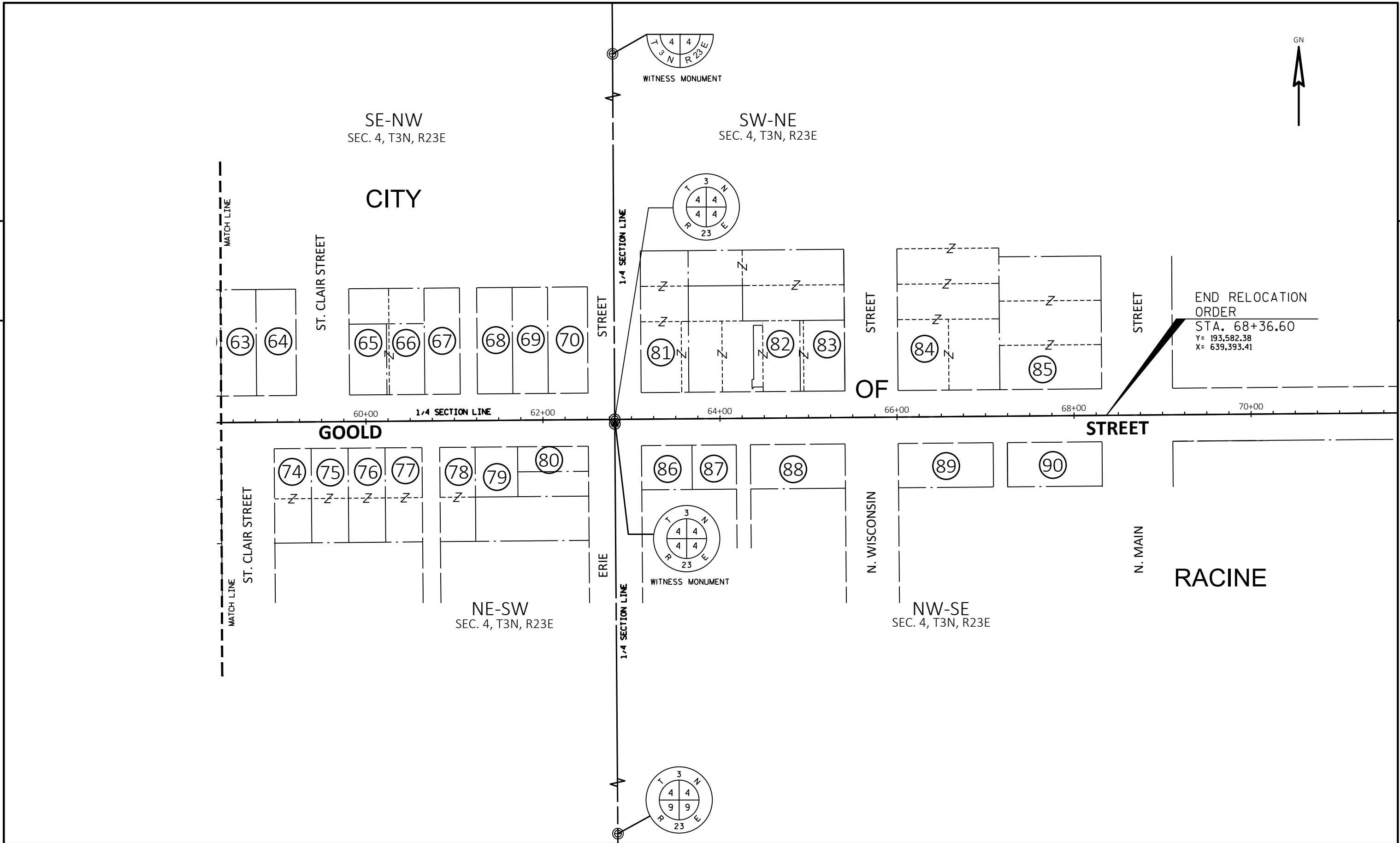
STATE R/W PROJECT NUMBER	2703-11-70
CONSTRUCTION PROJECT NUMBER	2703-11-70

PLAT SHEET	4.06
PS&E SHEET	_____

E

4

4

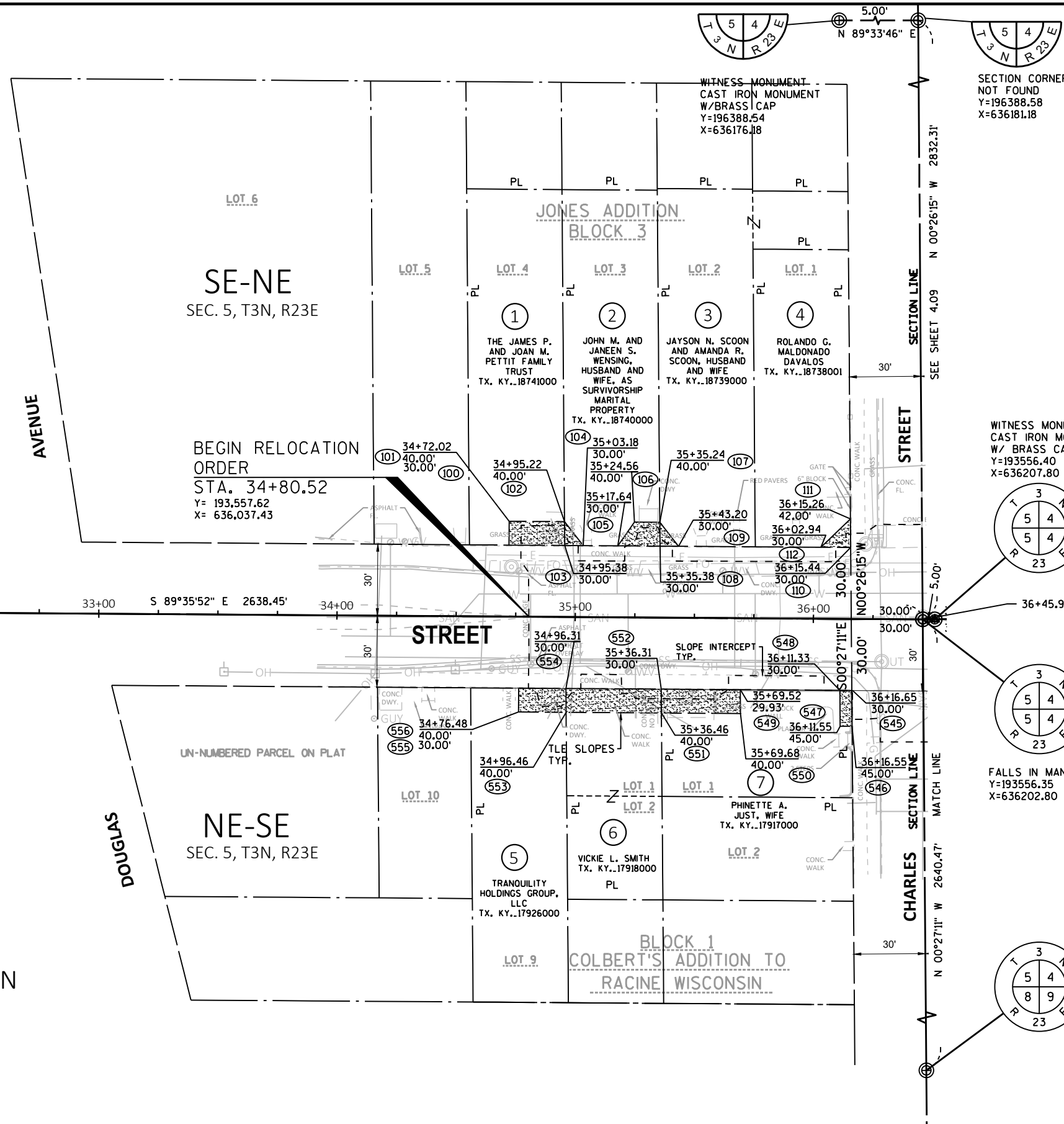


REVISION DATE	DATE <u>9/30/2020</u>	SCALE, FEET 0 50 100	HWY: GOOLD STREET	STATE R/W PROJECT NUMBER 2703-11-70	PLAT SHEET 4.07
	GRID FACTOR		COUNTY: RACINE	CONSTRUCTION PROJECT NUMBER 2703-11-70	PS&E SHEET

E

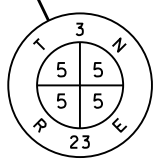
**BASIS OF EXISTING RIGHT-OF-WAY**

ROUTE	BASIS
GOULD STREET	JONES' ADDITION
CHARLES STREET	COLBERT'S ADDITION TO RACINE WISCONSIN
NORTH OF GOULD ST.	JONES' ADDITION
SOUTH OF GOULD ST.	COLBERT'S ADDITION TO RACINE WISCONSIN

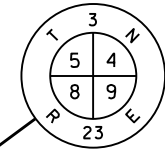
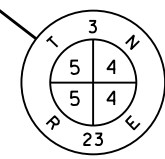
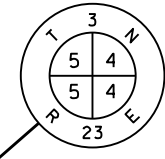


**COURSE TABLE**

FROM POINT TO	BEARING	DISTANCE
103-100	N89°35'52"W	23.36'
100-101	N00°24'08"E	10.00'
101-102	S89°35'52"E	23.21'
102-103	S00°25'54"E	10.00'
103-102	N00°25'54"W	9.98'
102-104	S38°08'06"E	12.75'
104-103	N89°35'52"W	7.80'
108-105	N89°35'52"W	17.75'
105-106	N35°07'20"E	12.17'
106-107	S89°35'52"E	10.67'
107-108	S00°25'54"E	10.00'
108-107	N00°25'54"W	10.00'
107-109	S38°07'31"E	12.78'
109-108	N89°35'52"W	7.82'
112-110	N89°35'52"W	12.50'
110-111	N46°09'29"E	17.20'
111-112	S00°26'15"E	12.00'
554-553	S00°27'11"E	10.00'
553-555	N89°35'52"W	19.99'
555-556	N00°24'08"E	10.00'
556-554	S89°35'52"E	19.84'
554-552	S89°35'52"E	40.00'
552-551	S00°27'11"E	10.00'
551-553	N89°35'52"W	40.00'
553-554	N00°27'11"W	10.00'
552-549	S89°35'52"E	33.21'
549-550	S00°27'11"E	10.00'
550-551	N89°35'52"W	33.21'
551-552	N00°27'11"W	10.00'
545-546	S00°27'11"E	15.00'
546-547	N89°35'52"W	5.00'
547-548	N00°27'11"W	15.00'
548-545	S89°35'52"E	5.00'



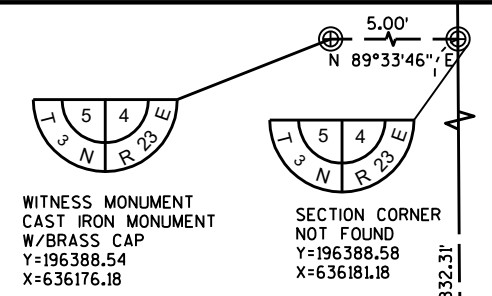
CAST IRON MONUMENT  
W/ BRASS CAP  
Y=193574.87  
X=633564.41



WITNESS MONUMENT  
CHISELED CROSS WITH  
4 2' OFFSET CUT  
CROSSES  
Y=190915.96  
X=636223.51

REVISION DATE	DATE <u>9/30/2020</u>	SCALE, FEET 0 25 50	HWY: GOULD STREET	STATE R/W PROJECT NUMBER 2703-11-00	PLAT SHEET 4.08
	GRID FACTOR		COUNTY: RACINE	CONSTRUCTION PROJECT NUMBER 2703-11-00	PS&E SHEET





**COURSE TABLE**

FROM POINT	TO POINT	BEARING	DISTANCE
113-114	N00°28'15"W	15.00'	
114-115	N89°32'08"E	3.79'	
115-116	S00°27'54"E	10.00'	
116-117	N89°32'08"E	10.92'	
117-118	S00°27'54"E	5.00'	
118-113	S89°32'08"W	14.72'	
122-119	S89°32'08"W	19.38'	
119-120	N28°58'55"E	17.23'	
120-121	N89°32'08"E	10.82'	
121-122	S00°25'54"E	15.00'	
122-121	N00°25'54"W	15.00'	
121-123	S25°40'04"E	16.58'	
123-122	S89°32'08"W	7.07'	
128-124	S89°32'08"W	20.37'	
124-125	N29°28'14"E	13.85'	
125-126	N89°32'08"E	13.47'	
126-128	S00°25'54"E	12.00'	
126-127	N00°25'54"W	10.00'	
127-130	N89°32'08"E	40.00'	
130-131	S00°25'54"E	40.00'	
131-132	S00°25'54"E	10.00'	
132-129	S89°32'08"W	40.00'	
132-131	N00°25'54"W	10.00'	
131-134	N89°32'08"E	27.32'	
134-133	S00°27'54"E	10.00'	
133-132	S89°32'08"W	27.33'	
133-135	S89°32'08"W	18.28'	
133-136	N00°27'54"W	12.00'	
136-137	N89°32'08"E	18.27'	
137-138	S00°25'54"E	12.00'	
138-137	N00°25'54"W	12.00'	
137-140	N89°32'08"E	40.00'	
140-139	S00°25'54"E	12.00'	
139-138	S89°32'08"W	40.00'	
139-140	N00°25'54"W	12.00'	
140-141	N89°32'08"E	40.00'	
141-142	S00°25'54"E	12.00'	
142-139	S89°32'08"W	40.00'	
142-141	N00°25'54"W	12.00'	
141-144	N89°32'08"E	40.00'	
144-143	S00°25'54"E	12.00'	
143-142	S89°32'08"W	40.00'	
143-144	N00°25'54"W	12.00'	
144-145	N89°32'08"E	5.65'	
145-146	S00°27'54"E	12.00'	
146-143	S89°32'08"W	5.65'	
150-147	S89°32'08"W	8.59'	
147-148	N00°27'54"W	15.00'	
148-149	N89°32'08"E	8.60'	
149-150	S00°25'54"E	15.00'	
151-152	N00°28'54"W	11.00'	
152-153	N89°32'08"E	8.35'	
153-154	S00°27'54"E	11.00'	
154-151	S89°32'08"W	8.35'	
158-155	S89°32'08"W	23.61'	
155-156	N00°27'54"W	10.00'	
156-157	N89°32'08"E	23.61'	
157-158	S00°28'54"E	10.00'	
158-157	N00°28'54"W	10.00'	
157-180	N89°32'08"E	6.39'	
180-159	S00°27'54"E	5.00'	
159-171	N89°32'08"E	10.00'	
171-572	S00°27'54"E	5.00'	
572-158	S89°32'08"W	16.43'	
166-161	S89°32'08"W	15.13'	
161-162	N00°27'54"W	5.00'	
162-163	N89°32'08"E	10.00'	
163-164	N00°27'54"W	10.00'	
164-165	N89°32'08"E	5.13'	
165-166	S00°28'54"E	15.00'	
554-553	S00°27'11"E	10.00'	
553-555	N89°35'52"W	19.89'	
555-556	N00°24'08"E	10.00'	
556-554	S89°35'52"E	19.84'	
554-552	S89°35'52"E	40.00'	
552-551	S00°27'11"E	10.00'	
551-553	N89°35'52"W	40.00'	
553-554	N00°27'11"W	10.00'	
552-549	S89°35'52"E	33.21'	
549-550	S00°27'11"E	10.00'	
550-551	N89°35'52"W	33.21'	
551-552	N00°27'11"W	10.00'	
545-546	S00°27'11"E	15.00'	
546-547	N89°35'52"W	5.00'	
547-548	N00°27'11"W	15.00'	
548-545	S89°35'52"E	5.00'	

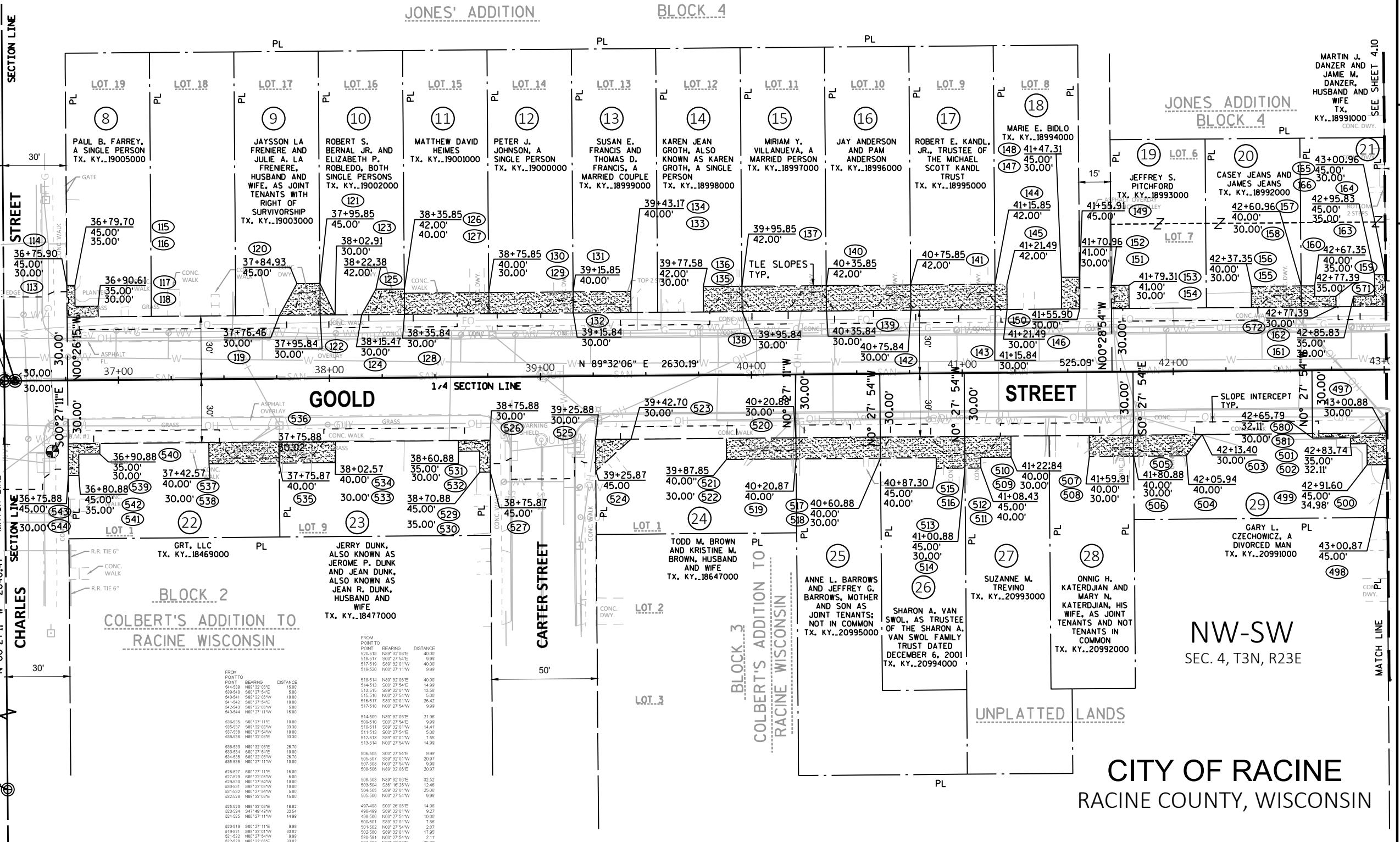
**BASIS OF EXISTING RIGHT-OF-WAY**

ROUTE	BASIS
GOOLD STREET	JONES' ADDITION
	COLBERT'S ADDITION TO RACINE WISCONSIN
	DOC. 2370840
	DOC. 2042272
	DOC. 2328025
	DOC. 1079427

**BASIS OF EXISTING RIGHT-OF-WAY**

ROUTE	BASIS
GOOLD STREET	DOC. 1209043
CHARLES STREET	
NORTH OF GOOLD ST.	JONES' ADDITION
SOUTH OF GOOLD ST.	COLBERT'S ADDITION TO RACINE WISCONSIN
CARTER STREET	COLBERT'S ADDITION TO RACINE WISCONSIN

SW-NW  
SEC. 4, T3N, R23E



WITNESS MONUMENT  
CAST IRON MONUMENT  
W/ BRASS CAP  
Y=193556.40  
X=636207.80

FALLS IN MANHOLE  
Y=193556.35  
X=636202.80

WITNESS MONUMENT  
CHISELED CROSS WITH  
4 2' OFFSET CUT  
CROSSES  
Y=190915.96  
X=636223.51

MARTIN J. DANZER AND  
JAMIE M. DANZER,  
HUSBAND AND  
WIFE  
TX. KY..18991000  
CONC. DWY.

JONES ADDITION  
BLOCK 4

BLOCK 2  
COLBERT'S ADDITION TO  
RACINE WISCONSIN

UNPLATTED LANDS

NW-SW  
SEC. 4, T3N, R23E  
**CITY OF RACINE**  
RACINE COUNTY, WISCONSIN

REVISION DATE	DATE <u>9/30/2020</u>	SCALE, FEET 0 25 50	HWY: GOOLD STREET	STATE R/W PROJECT NUMBER 2703-11-00	PLAT SHEET 4.09
	GRID FACTOR		COUNTY: RACINE	CONSTRUCTION PROJECT NUMBER 2703-11-00	PS&E SHEET <u>    </u>

BASIS OF EXISTING RIGHT-OF-WAY

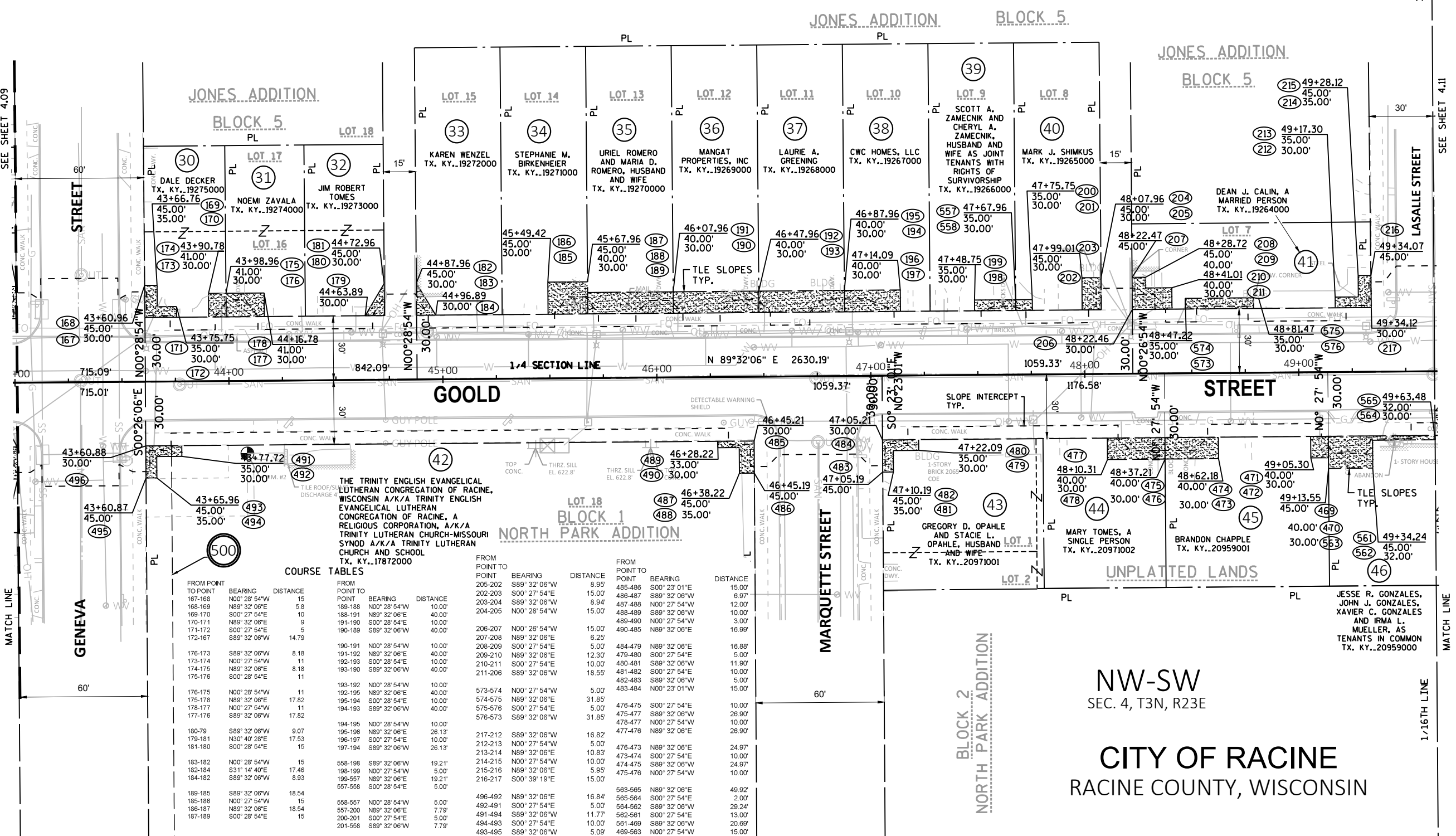
ROUTE	BASIS
GOULD STREET	JONES' ADDITION
	NORTH PARK ADDITION
	DOC. 1209043
	DOC. 2345155
	DOC. 2188798
	DOC. 246607

BASIS OF EXISTING RIGHT-OF-WAY

ROUTE	BASIS
GENEVA STREET	
NORTH OF GOULD ST.	JONES' ADDITION
SOUTH OF GOULD ST.	DOC. 1209043
MARQUETTE STREET	NORTH PARK ADDITION
LA SALLE STREET	
NORTH OF GOULD ST.	JONES' ADDITION

SW-NW  
SEC. 4, T3N, R23E

Utility No.	Owner	Width	Document #	Parcel
500	WE ENERGIES- ELECTRIC	12'	2475092	42



**COURSE TABLES**

FROM POINT	TO POINT	BEARING	DISTANCE	FROM POINT	TO POINT	BEARING	DISTANCE
167-168	N00°28'54"W	15		205-202	S89°32'06"W	8.95'	
168-169	N89°32'06"E	5.8		202-203	S00°27'54"E	15.00'	
169-170	S00°27'54"E	10		203-204	S89°32'06"W	8.94'	
170-171	N89°32'06"E	9		204-205	N00°28'54"W	15.00'	
171-172	S00°27'54"E	5		206-207	N00°28'54"W	15.00'	
172-167	S89°32'06"W	14.79		207-208	N89°32'06"E	6.25'	
176-173	S89°32'06"W	8.18		208-209	S00°27'54"E	5.00'	
173-174	N00°27'54"W	11		209-210	N89°32'06"E	12.30'	
174-175	N89°32'06"E	8.18		210-211	S00°27'54"E	10.00'	
175-176	S00°28'54"E	11		211-206	S89°32'06"W	18.55'	
176-175	N00°28'54"W	11		190-191	N00°28'54"W	10.00'	
175-178	N89°32'06"E	17.82		191-192	N89°32'06"E	40.00'	
178-177	N00°27'54"W	11		192-193	S00°28'54"E	10.00'	
177-176	S89°32'06"W	17.82		193-190	S89°32'06"W	40.00'	
180-79	S89°32'06"W	9.07		190-191	N00°28'54"W	10.00'	
179-181	N00°40'28"E	17.53		192-195	N89°32'06"E	40.00'	
181-180	S00°28'54"E	15		195-194	S00°27'54"E	10.00'	
183-182	N00°28'54"W	15		194-193	S89°32'06"W	40.00'	
182-184	S31°14'40"E	17.46		194-195	N00°28'54"W	10.00'	
184-182	S89°32'06"W	8.93		195-196	N89°32'06"E	26.13'	
189-185	S89°32'06"W	18.54		196-197	S00°27'54"E	10.00'	
185-186	N00°27'54"W	15		197-194	S89°32'06"W	26.13'	
186-187	N89°32'06"E	18.54		558-198	S89°32'06"W	19.21'	
187-189	S00°28'54"E	15		198-199	N00°27'54"W	5.00'	
				199-557	N89°32'06"E	19.21'	
				557-558	S00°28'54"E	5.00'	
				558-557	N00°28'54"W	5.00'	
				557-200	N89°32'06"E	7.79'	
				200-201	S00°27'54"E	5.00'	
				201-558	S89°32'06"W	7.79'	
				496-492	N89°32'06"E	16.84'	
				492-491	S00°27'54"E	5.00'	
				491-494	S89°32'06"W	11.77'	
				494-493	S00°27'54"E	10.00'	
				493-495	S89°32'06"W	5.09'	
				495-496	N00°28'06"W	15.00'	
				485-486	S00°23'01"E	15.00'	
				486-487	S89°32'06"W	6.97'	
				487-488	N00°27'54"W	12.00'	
				488-489	S89°32'06"E	10.00'	
				489-490	N00°27'54"W	3.00'	
				490-485	N89°32'06"E	16.99'	
				484-479	N89°32'06"E	16.88'	
				479-480	S00°27'54"E	5.00'	
				480-481	S89°32'06"W	11.90'	
				481-482	S00°27'54"E	10.00'	
				482-483	S89°32'06"W	5.00'	
				483-484	N00°23'01"W	15.00'	
				476-475	S00°27'54"E	10.00'	
				475-477	S89°32'06"W	26.90'	
				478-477	N00°27'54"W	10.00'	
				477-476	N89°32'06"E	26.90'	
				476-473	N89°32'06"E	24.97'	
				473-474	S00°27'54"E	10.00'	
				474-475	S89°32'06"W	24.97'	
				475-476	N00°27'54"W	10.00'	
				563-565	N89°32'06"E	49.92'	
				565-564	S00°27'54"E	2.00'	
				564-562	S89°32'06"W	29.24'	
				562-561	S00°27'54"E	13.00'	
				561-469	S89°32'06"W	20.89'	
				469-563	N00°27'54"W	15.00'	

REVISION DATE	DATE 9/30/2020	SCALE, FEET	HWY: GOULD STREET	STATE R/W PROJECT NUMBER	2703-11-00	PLAT SHEET	4.10
	GRID FACTOR	0 25 50	COUNTY: RACINE	CONSTRUCTION PROJECT NUMBER	2703-11-00	PS&E SHEET	E

SE-NW  
SEC. 4, T3N, R23E

TOBIAS  
ADDITION

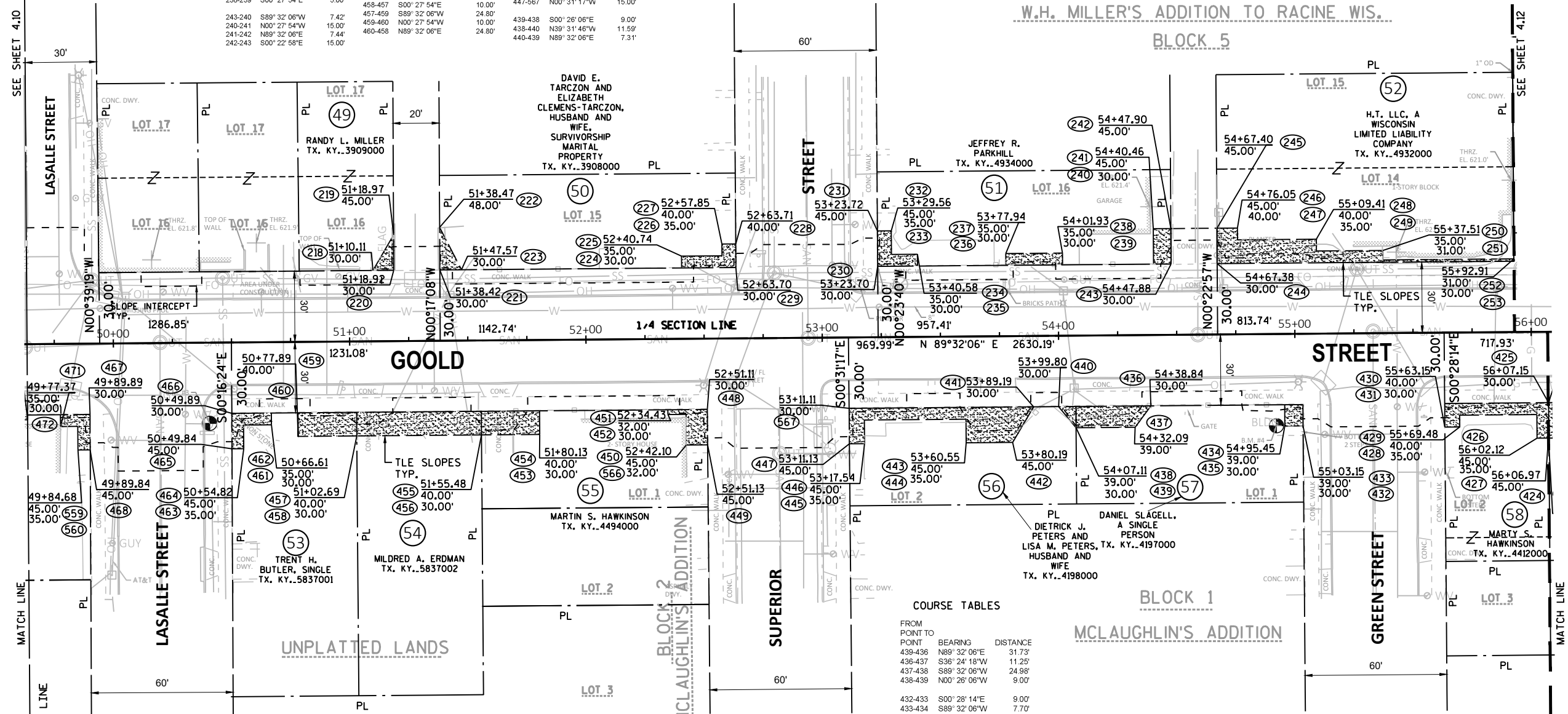
COURSE TABLES				COURSE TABLES				COURSE TABLES			
FROM POINT TO	BEARING	DISTANCE	FROM POINT TO	BEARING	DISTANCE	FROM POINT TO	BEARING	DISTANCE	FROM POINT TO	BEARING	DISTANCE
220-218	S89°32'06"W	8.81'	244-245	N00°22'57"W	15.00'	458-456	N89°32'06"E	52.79'	458-456	N89°32'06"E	52.79'
218-219	N30°05'11"E	17.42'	245-246	N89°32'06"E	8.66'	456-455	S00°26'06"W	10.00'	456-455	S00°26'06"W	10.00'
219-220	S00°17'08"E	15.00'	246-247	S00°27'54"E	5.00'	455-457	S89°32'06"W	52.79'	457-458	N00°27'54"W	10.00'
221-222	N00°17'08"W	18.00'	247-248	N89°32'06"E	5.00'	454-453	S00°27'54"E	5.00'	453-454	S00°27'54"E	5.00'
222-223	S27°16'40"E	20.17'	248-250	N89°32'06"E	28.10'	456-453	N89°32'06"E	24.64'	453-454	S00°27'54"E	10.00'
223-221	S89°32'06"W	9.15'	250-251	S00°27'54"E	4.00'	453-454	S00°27'54"E	10.00'	454-455	S89°32'06"W	24.65'
229-224	S89°32'06"W	22.96'	251-252	N89°32'06"E	55.41'	454-455	S89°32'06"W	24.65'	455-456	N00°26'06"W	10.00'
224-225	N00°27'54"W	5.00'	252-253	S00°21'41"E	1.00'	455-456	N00°26'06"W	10.00'	456-457	S89°32'06"E	52.79'
225-226	N89°32'06"E	17.11'	253-244	S89°32'06"W	125.53'	454-449	S00°31'17"E	15.00'	449-450	S89°32'06"W	9.03'
228-227	N00°27'54"W	5.00'	467-468	S00°18'24"E	15.00'	449-450	S89°32'06"W	9.03'	450-566	N00°27'54"W	13.00'
227-228	N89°32'06"E	5.87'	468-559	S89°32'06"W	5.16'	450-566	N00°27'54"W	13.00'	566-451	S89°32'06"W	7.67'
228-229	S00°23'40"E	10.00'	559-560	N00°27'54"W	10.00'	566-451	S89°32'06"W	7.67'	451-452	N00°27'54"W	2.00'
230-231	N00°23'40"W	15.00'	560-471	S89°32'06"W	7.31'	452-448	N89°32'06"E	16.68'	446-447	S89°32'06"W	6.41'
231-232	N89°32'06"E	5.84'	471-472	N00°27'54"W	5.00'	452-448	N89°32'06"E	16.68'	447-567	N00°31'17"W	15.00'
232-233	S00°27'54"E	10.00'	472-467	N89°32'06"E	12.53'	567-441	N89°32'06"E	78.08'	441-442	S30°29'58"W	17.49'
233-234	N89°32'06"E	11.02'	466-461	N89°32'06"E	16.72'	441-442	S30°29'58"W	17.49'	442-443	S89°32'06"W	19.64'
234-235	S00°27'54"E	5.00'	461-462	S00°27'54"E	5.00'	442-443	S89°32'06"W	19.64'	443-444	N00°27'54"W	10.00'
235-230	S89°32'06"W	16.88'	462-463	S89°32'06"W	11.79'	444-445	S89°32'06"W	43.02'	445-446	S00°27'54"E	10.00'
238-236	S89°32'06"W	23.99'	463-464	S00°27'54"E	10.00'	445-446	S00°27'54"E	10.00'	446-447	S89°32'06"W	6.41'
236-237	N00°27'54"W	5.00'	464-465	S89°32'06"W	4.98'	446-447	S89°32'06"W	6.41'	447-567	N00°31'17"W	15.00'
237-238	N89°32'06"E	23.99'	465-466	N00°16'24"W	15.00'	447-567	N00°31'17"W	15.00'	439-438	S00°26'06"E	9.00'
238-239	S00°27'54"E	5.00'	458-457	S00°27'54"E	10.00'	439-438	S00°26'06"E	9.00'	438-440	N39°31'46"W	11.59'
243-240	S89°32'06"W	7.42'	457-459	S89°32'06"W	24.80'	438-440	N39°31'46"W	11.59'	440-439	N89°32'06"E	7.31'
240-241	N00°27'54"W	15.00'	459-460	N00°27'54"W	24.80'	440-439	N89°32'06"E	7.31'			
241-242	N89°32'06"E	7.44'	460-458	N89°32'06"E	24.80'						
242-243	S00°22'58"E	15.00'									

BASIS OF EXISTING RIGHT-OF-WAY	
ROUTE	BASIS
GOULD STREET	TOBIAS ADDITION
	SUBDIVISION OF BLOCK 5 IN W. H. MILLER'S ADDITION TO RACINE WIS.
	MCLAUGHLIN'S ADDITION
	DOC. 1918353
	DOC. 874051
	DOC. 2422399
LA SALLE STREET	
SOUTH OF GOULD ST.	DOC. 2466067
	MCLAUGHLIN'S ADDITION

BASIS OF EXISTING RIGHT-OF-WAY	
ROUTE	BASIS
SUPERIOR STREET	
NORTH OF GOULD ST.	TOBIAS ADDITION
	SUBDIVISION OF BLOCK 5 IN W. H. MILLER'S ADDITION TO RACINE WIS.
SOUTH OF GOULD ST.	MCLAUGHLIN'S ADDITION
GREEN STREET	
SOUTH OF GOULD ST.	MCLAUGHLIN'S ADDITION
	ROWAN'S ADDITION TO RACINE



SUBDIVISION OF BLOCK 5 IN  
W.H. MILLER'S ADDITION TO RACINE WIS.  
BLOCK 5



COURSE TABLES		
FROM POINT TO	BEARING	DISTANCE
439-436	N89°32'06"E	31.73'
436-437	S36°24'18"W	11.25'
437-438	S89°32'06"W	24.98'
438-439	N00°26'06"W	9.00'
432-433	S00°28'14"E	9.00'
433-434	S89°32'06"W	7.70'
434-435	N00°27'54"W	9.00'
435-432	N89°32'06"E	7.70'
431-425	N89°32'06"E	44.00'
425-424	S00°27'54"E	15.00'
424-426	S89°32'06"W	5.03'
426-427	N00°27'54"W	10.00'
427-428	S89°32'06"W	32.64'
428-429	S00°27'54"E	5.00'
429-430	S89°32'06"W	6.33'
430-431	N00°28'14"W	10.00'

CITY OF RACINE  
RACINE COUNTY, WISCONSIN

NE-SW  
SEC. 4, T3N, R23E

REVISION DATE	DATE 9/30/2020	SCALE, FEET	HWY: GOULD STREET	STATE R/W PROJECT NUMBER 2703-11-00	PLAT SHEET 4.11
	GRID FACTOR	0 25 50	COUNTY: RACINE	CONSTRUCTION PROJECT NUMBER 2703-11-00	PS&E SHEET

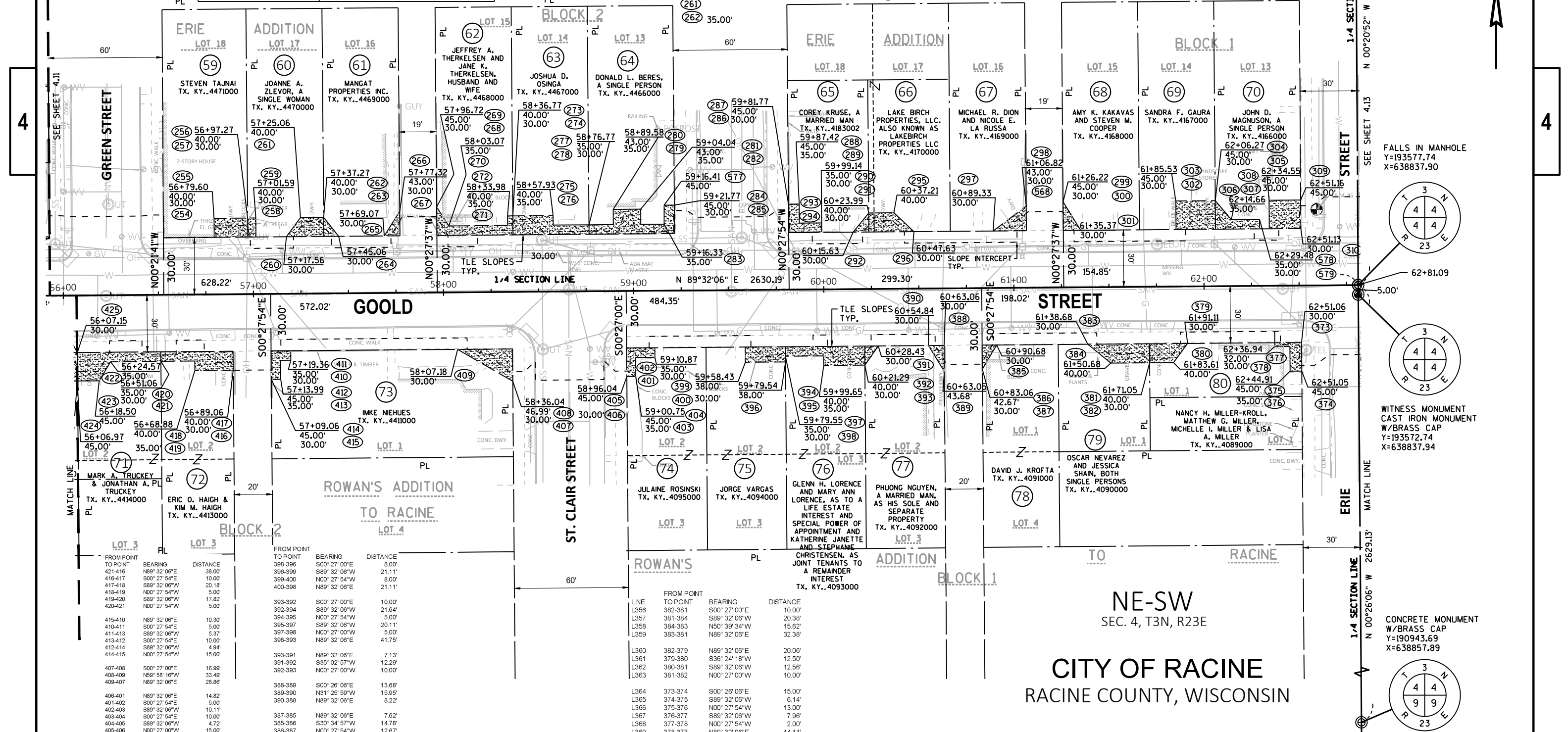
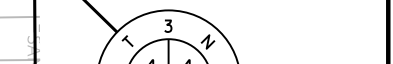
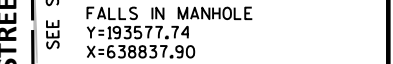
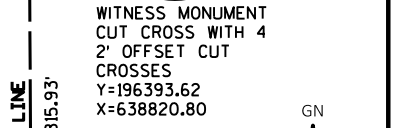
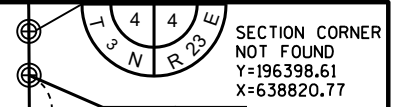
ROUTE	BASIS
GOOLD STREET	ERIE ADDITION
	ROWAN'S ADDITION TO RACINE
GREEN STREET	
NORTH OF GOOLD ST.	ERIE ADDITION
ST. CLAIR STREET	
SOUTH OF GOOLD ST.	ROWAN'S ADDITION TO RACINE
NORTH OF GOOLD ST.	ERIE ADDITION
ERIE STREET	
SOUTH OF GOOLD ST.	ROWAN'S ADDITION TO RACINE
NORTH OF GOOLD ST.	ERIE ADDITION

SE-NW  
SEC. 4, T3N, R23E

ST. CLAIR STREET

FROM POINT TO POINT	BEARING	DISTANCE	FROM POINT TO POINT	BEARING	DISTANCE
257-254	S89°32'06"W	17.67'	288-289	S00°27'37"E	15.00'
254-255	N00°27'54"W	10.00'	289-278	S32°51'30"E	11.84'
255-256	N89°32'06"E	17.67'	270-271	S88°32'06"W	30.91'
256-257	S00°27'54"E	10.00'	271-272	N00°27'54"W	5.00'
258-257	S89°32'06"W	4.31'	272-273	S88°32'06"W	2.78'
257-258	N00°27'54"W	10.00'	273-274	S00°27'54"E	10.00'
258-259	S89°32'06"W	4.31'	274-269	S89°32'06"W	40.05'
259-258	N00°27'54"W	10.00'	274-273	N00°27'54"W	10.00'
263-260	S89°32'06"W	19.71'	273-275	N89°32'06"E	21.16'
260-261	N36°24'18"E	12.50'	275-276	S00°27'54"E	5.00'
261-262	S89°32'06"W	12.21'	276-277	N89°32'06"E	18.84'
262-263	N00°27'54"W	10.00'	277-278	S00°27'54"E	5.00'
263-262	S00°27'54"E	10.00'	278-274	S89°32'06"W	40.00'
262-264	N38°23'37"W	12.68'	285-278	S89°32'06"W	45.00'
264-262	N89°32'06"E	7.78'	278-277	N00°27'54"W	5.00'
267-265	S89°32'06"W	8.25'	277-279	N89°32'06"E	12.81'
265-268	N31°56'12"E	15.40'	278-280	N00°27'54"W	8.00'
268-267	S00°28'11"E	13.00'	280-281	N89°32'06"E	14.46'
			281-282	S00°27'54"E	8.00'
			282-283	N89°32'06"E	12.29'
			283-277	N00°00'00"E	10.00'
			277-284	N89°32'06"E	5.36'
			284-285	S00°27'54"E	15.02'

FROM POINT TO POINT	BEARING	DISTANCE	FROM POINT TO POINT	BEARING	DISTANCE
288-287	S00°27'54"E	15.00'	305-302	S89°32'06"W	20.74'
287-288	S89°32'06"W	5.85'	302-303	N00°27'54"W	15.00'
288-289	N00°27'54"W	10.00'	303-304	N89°32'06"E	20.74'
289-290	S89°32'06"W	11.72'	304-305	S00°27'37"E	15.00'
290-291	N00°27'54"W	5.00'	305-304	N00°27'37"W	15.00'
291-286	S89°32'06"W	17.37'	304-306	S40°26'52"E	13.05'
294-292	S89°32'06"W	8.36'	306-308	N89°32'06"E	14.82'
292-293	N39°25'04"E	13.03'	307-308	N00°27'54"W	5.00'
293-294	S00°27'54"E	10.00'	308-309	N89°32'06"E	16.81'
294-293	N00°27'54"W	10.00'	309-310	S00°20'52"E	15.00'
293-295	N89°32'06"E	13.22'	310-307	S89°32'07"W	16.58'
295-296	S40°38'57"E	14.44'	307-308	N00°27'54"W	15.00'
296-294	S89°32'06"W	23.64'	308-309	N89°32'06"E	16.81'
588-297	S89°32'06"W	17.48'	425-416	N89°32'06"E	43.91'
297-298	N52°55'02"E	21.78'	418-417	S00°27'54"E	5.00'
298-588	S00°28'11"E	13.00'	417-418	S89°32'06"W	26.49'
300-299	N00°27'37"W	15.00'	418-419	S30°48'18"W	11.70'
299-301	S31°50'42"E	17.57'	419-420	S89°32'06"W	11.35'
301-300	S89°32'06"W	9.15'	420-421	N00°27'54"W	15.00'

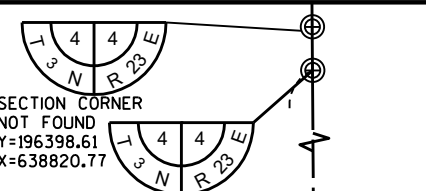


FROM POINT TO POINT	BEARING	DISTANCE	FROM POINT TO POINT	BEARING	DISTANCE
398-396	S00°27'00"E	8.00'	393-392	S00°27'00"E	10.00'
396-399	S89°32'06"W	21.11'	392-394	S89°32'06"W	21.64'
399-400	N00°27'54"W	8.00'	394-395	N00°27'54"W	5.00'
400-398	N89°32'06"E	21.11'	395-397	S89°32'06"W	20.11'
			397-388	N00°27'00"W	5.00'
			398-393	N89°32'06"E	41.75'
			393-391	N89°32'06"E	7.13'
			391-392	S35°02'57"W	12.29'
			392-393	N00°27'00"W	10.00'
			388-389	S00°26'08"E	13.68'
			389-390	N31°25'59"W	15.95'
			390-388	N89°32'06"E	8.22'
			387-385	N89°32'06"E	7.62'
			385-386	S30°34'57"W	14.78'
			386-387	N00°27'54"W	12.67'

FROM POINT TO POINT	BEARING	DISTANCE	FROM POINT TO POINT	BEARING	DISTANCE	
382-381	S00°27'00"E	10.00'	L356	382-381	S00°27'00"E	10.00'
381-384	S89°32'06"W	20.38'	L357	381-384	S89°32'06"W	20.38'
384-383	N50°39'34"W	15.62'	L358	384-383	N50°39'34"W	15.62'
383-381	N89°32'06"E	32.38'	L359	383-381	N89°32'06"E	32.38'
382-379	N89°32'06"E	20.06'	L360	382-379	N89°32'06"E	20.06'
379-380	S36°24'18"W	12.50'	L361	379-380	S36°24'18"W	12.50'
380-381	S89°32'06"W	12.56'	L362	380-381	S89°32'06"W	12.56'
381-382	N00°27'00"W	10.00'	L363	381-382	N00°27'00"W	10.00'
373-374	S00°26'06"E	15.00'	L364	373-374	S00°26'06"E	15.00'
374-375	S89°32'06"W	6.14'	L365	374-375	S89°32'06"W	6.14'
375-376	N00°27'54"W	13.00'	L366	375-376	N00°27'54"W	13.00'
376-377	S89°32'06"W	7.95'	L367	376-377	S89°32'06"W	7.95'
377-378	N00°27'54"W	2.00'	L368	377-378	N00°27'54"W	2.00'
378-373	N89°32'06"E	14.11'	L369	378-373	N89°32'06"E	14.11'

NE-SW  
SEC. 4, T3N, R23E  
CITY OF RACINE  
RACINE COUNTY, WISCONSIN

REVISION DATE	DATE	SCALE, FEET	HWY:	STATE R/W PROJECT NUMBER	PLAT SHEET
	9/30/2020	0 25 50	GOOLD STREET	2703-11-00	4.12
			COUNTY: RACINE	CONSTRUCTION PROJECT NUMBER	PS&E SHEET
				2703-11-00	



Utility No.	Owner	GENERAL DESCRIPTION	Document #	Parcel
500	WE ENERGIES-ELECTRIC	GENERAL DESCRIPTION	358322	81, 82, 83
500	WE ENERGIES-ELECTRIC	GENERAL DESCRIPTION	358321	84

CITY OF RACINE  
RACINE COUNTY, WISCONSIN



4

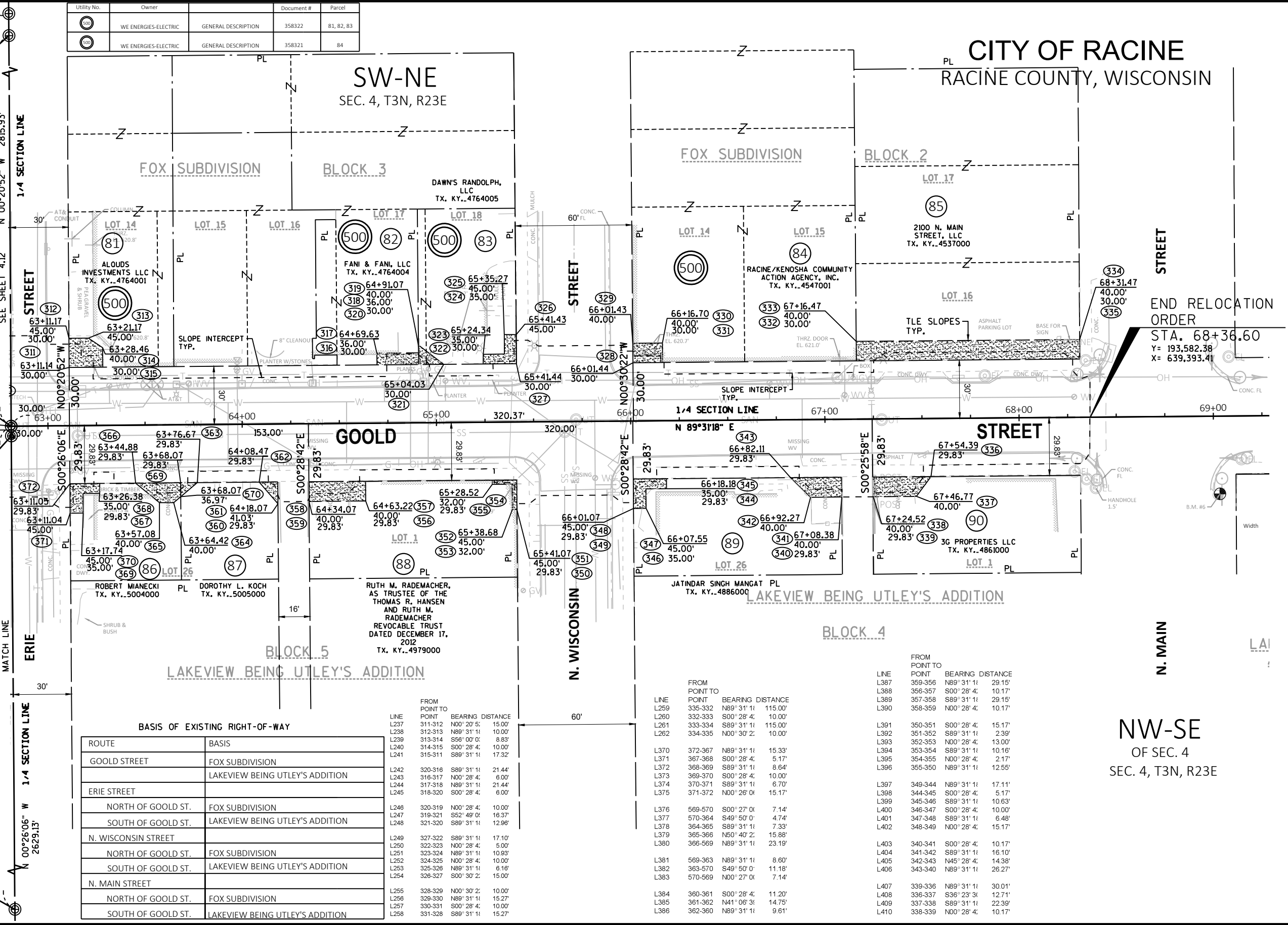
4

WITNESS MONUMENT CUT CROSS WITH 4 2' OFFSET CUT CROSSES  
Y=196393.62  
X=638820.80

FALLS IN MANHOLE  
Y=193577.74  
X=638837.90

WITNESS MONUMENT CAST IRON MONUMENT W/BRASS CAP  
Y=193572.74  
X=638837.94

CONCRETE MONUMENT W/BRASS CAP  
Y=190943.69  
X=638857.89



END RELOCATION ORDER  
STA. 68+36.60  
Y= 193,582.38  
X= 639,393.41

ROUTE	BASIS
GOOLD STREET	FOX SUBDIVISION
	LAKEVIEW BEING UTLEY'S ADDITION
ERIE STREET	
NORTH OF GOOLD ST.	FOX SUBDIVISION
SOUTH OF GOOLD ST.	LAKEVIEW BEING UTLEY'S ADDITION
N. WISCONSIN STREET	
NORTH OF GOOLD ST.	FOX SUBDIVISION
SOUTH OF GOOLD ST.	LAKEVIEW BEING UTLEY'S ADDITION
N. MAIN STREET	
NORTH OF GOOLD ST.	FOX SUBDIVISION
SOUTH OF GOOLD ST.	LAKEVIEW BEING UTLEY'S ADDITION

LINE	POINT TO	BEARING	DISTANCE
L237	311-312	N00°20'52"E	15.00'
L238	312-313	N89°31'11"	10.00'
L239	313-314	S56°00'00"	8.83'
L240	314-315	S00°28'4"	10.00'
L241	315-311	S89°31'11"	17.32'
L242	320-316	S89°31'11"	21.44'
L243	316-317	N00°28'4"	6.00'
L244	317-318	N89°31'11"	21.44'
L245	318-320	S00°28'4"	6.00'
L246	320-319	N00°28'4"	10.00'
L247	319-321	S52°49'00"	16.37'
L248	321-320	S89°31'11"	12.96'
L249	327-322	S89°31'11"	17.10'
L250	322-323	N00°28'4"	5.00'
L251	323-324	N89°31'11"	10.93'
L252	324-325	N00°28'4"	10.00'
L253	325-328	N89°31'11"	6.16'
L254	328-327	S00°30'2"	15.00'
L255	328-329	N00°30'2"	10.00'
L256	329-330	N89°31'11"	15.27'
L257	330-331	S00°28'4"	10.00'
L258	331-328	S89°31'11"	15.27'

LINE	FROM POINT TO	BEARING	DISTANCE
L259	335-332	N89°31'11"	115.00'
L260	332-333	S00°28'4"	10.00'
L261	333-334	S89°31'11"	115.00'
L262	334-335	N00°30'2"	10.00'
L370	372-367	N89°31'11"	15.33'
L371	367-368	S00°28'4"	5.17'
L372	368-369	S89°31'11"	8.64'
L373	369-370	S00°28'4"	10.00'
L374	370-371	S89°31'11"	6.70'
L375	371-372	N00°26'0"	15.17'
L376	569-570	S00°27'0"	7.14'
L377	570-364	S49°50'0"	4.74'
L378	364-365	S89°31'11"	7.33'
L379	365-366	N50°40'2"	15.88'
L380	366-569	N89°31'11"	23.19'
L381	569-363	N89°31'11"	8.60'
L382	363-570	S49°50'0"	11.18'
L383	570-569	N00°27'0"	7.14'
L384	360-361	S00°28'4"	11.20'
L385	361-362	N41°06'3"	14.75'
L386	362-360	N89°31'11"	9.61'

LINE	FROM POINT TO	BEARING	DISTANCE
L387	359-356	N89°31'11"	29.15'
L388	356-357	S00°28'4"	10.17'
L389	357-358	S89°31'11"	29.15'
L390	358-359	N00°28'4"	10.17'
L391	350-351	S00°28'4"	15.17'
L392	351-352	S89°31'11"	2.39'
L393	352-353	N00°28'4"	13.00'
L394	353-354	S89°31'11"	10.16'
L395	354-355	N00°28'4"	2.17'
L396	355-350	N89°31'11"	12.55'
L397	349-344	N89°31'11"	17.11'
L398	344-345	S00°28'4"	5.17'
L399	345-346	S89°31'11"	10.00'
L400	346-347	S00°28'4"	10.03'
L401	347-348	S89°31'11"	6.48'
L402	348-349	N00°28'4"	15.17'
L403	340-341	S00°28'4"	10.17'
L404	341-342	S89°31'11"	16.10'
L405	342-343	N45°28'4"	14.38'
L406	343-340	N89°31'11"	26.27'
L407	339-336	N89°31'11"	30.01'
L408	336-337	S36°23'3"	12.71'
L409	337-338	S89°31'11"	22.39'
L410	338-339	N00°28'4"	10.17'

NW-SE  
OF SEC. 4  
SEC. 4, T3N, R23E

REVISION DATE	DATE <u>9/30/2020</u>	SCALE, FEET 0 25 50	HWY: GOOLD STREET	STATE R/W PROJECT NUMBER 2703-11-00	PLAT SHEET 4.13
	GRID FACTOR		COUNTY: RACINE	CONSTRUCTION PROJECT NUMBER 2703-11-00	PS&E SHEET