








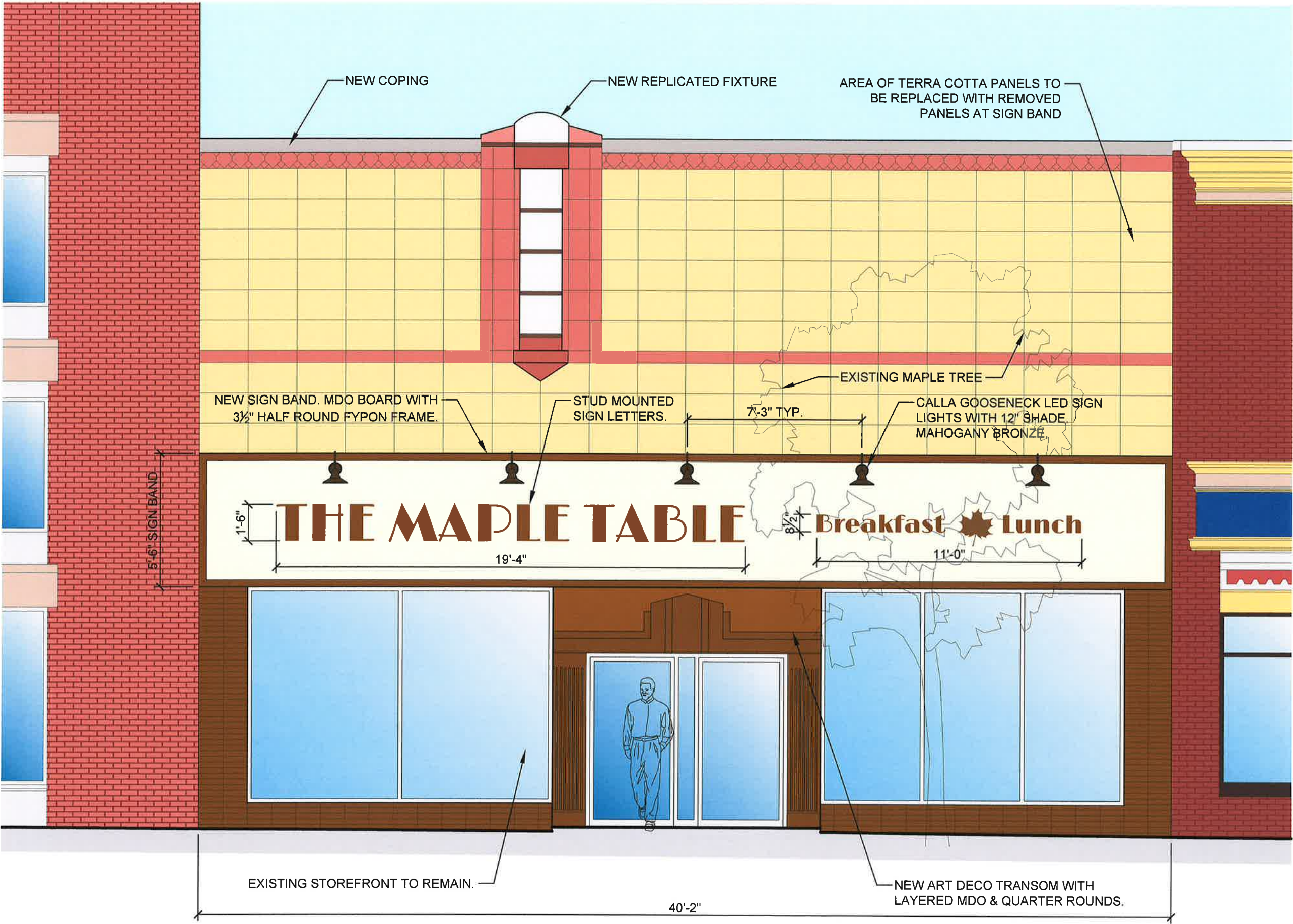
STYLE					
Calla (7)					
SIZE	Clear				
	12" (6)				
	14" (5)				
	16" (7)				
20" (7)					
		20" Calla LED Barn Light with Contemporary Arm in Vintage Green	20" Calla LED Barn Light with Industrial Arm in Vintage Green	20" Calla LED Barn Light with Metropolitan Arm in Vintage Green	20" Calla LED Barn Light with Rustic Arm in Vintage Green
		\$419.00	\$429.00	\$379.00	\$379.00
					
		20" Calla LED Barn Light with Traditional Arm in Vintage Green	20" Calla LED Barn Light with Vintage Arm in Vintage Green	20" Calla LED Barn Light with Sleek Arm in Vintage Green	
		\$419.00	\$419.00	\$429.00	

Gooseneck Lighting

Gooseneck barn lights are a unique type of light fixtures giving an industrial feel for either the home or business. The curved fixture's arm is a reminiscence of a goose's neck, hence the name. Often as a utilitarian lighting fixture, which can be installed either indoors or outdoors. With its rustic and vintage style, it will sure to please the eye as a decor



C:\Users\Owner\Documents\Bob\Architect\520 Main-Lopiparo\Maple Table facades-revised-Edwg, 12/4/2018 3:11:13 PM, DWG To PDF.pc3



520 MAIN STREET  
FRONT FACADE

SCALE: 1/4" = 1'-0"

PAINT SELECTION

SW 6112 BISCUIT

SW 66116 TATAMI TAN

SW 6117 SMOKEY TOPAZ

© 2018 RPY ARCHITECTURE, LLC.  
THIS DESIGN AND DRAWING IS THE  
EXCLUSIVE PROPERTY OF RPY  
ARCHITECTURE, LLC. ANY USE OR  
REPRODUCTION WITHOUT THE  
EXPRESSED WRITTEN CONSENT OF  
RPY ARCHITECTURE, LLC IS  
STRICTLY PROHIBITED.

**RPY Architecture, LLC**

3316 N Wisconsin St  
Racine, WI 53402  
262-994-9285  
mb\_yuhas@yahoo.com

**Facade Improvements for:**

**The Maple Table**

520 Main Street, Racine, WI 53403

PLAN DATES:  
DADRC & RDA  
REVIEW  
9-17-18  
REVISED  
10-14-18  
12-4-18

SHEET  
**1** OF 1